



LIDCO, Pars SEE Zone, Assaluyeh,
Integrated Methanol and Ammonia
Plant 3000 MTPD MeOH / 900 MTPD NH3 PROJECT



Earthing Diagrams

Document No. 17735-41

Project No.	Vendor Doc.	P.O. No.	Department	Document Type	Serial No	Revision	Page
N278	VD	6019	EL	DIA	0036	01	Page 1 of 3

**Airpack B.V. - Air Compressor –
Integrated Methanol and Ammonia Plant
17735-COM Earthing Diagrams (K020)**

code-2
M. Vakili

REV.	DATE	DESCRIPTION	DRAWN	CHECKED	APPROVED
01	28-11-2023	Issued for Approval	A.Z.	S.K.	J.J.

This document has been produced by Contractor for LIDCO. It is confidential and cannot be disclosed to or used by any third party for any purpose without prior written consent.

Earthing Diagrams

Document No. 17735-41

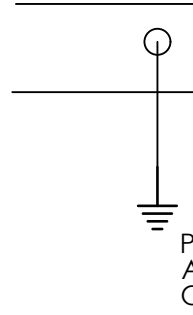
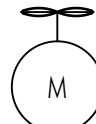
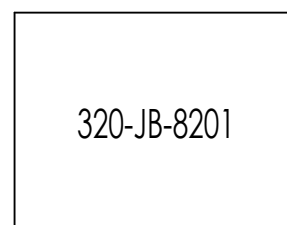
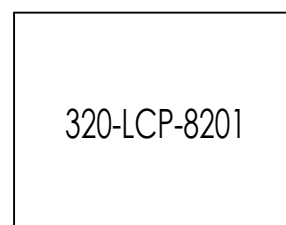
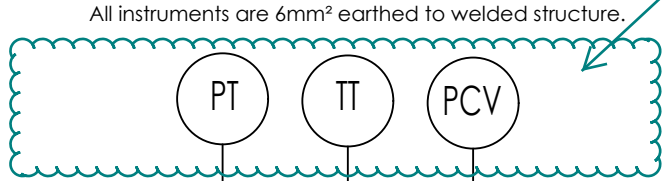
Project No.	Vendor Doc.	P.O. No.	Department	Document Type	Serial No	Revision	Page
N278	VD	6019	EL	DIA	0036	01	Page 2 of 3

LIST OF REVISED PAGES

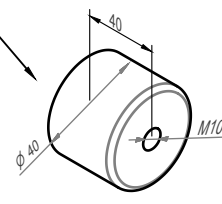
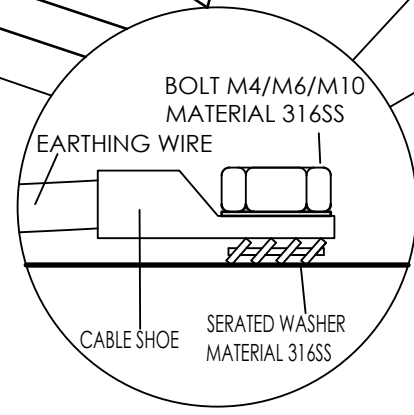
Rev. Page	01	02	03	04	05	Rev. Page	01	02	03	04	05	Rev. Page	01	02	03	04	05	Rev. Page	01	02	03	04	05	
1	X					26						51						76						
2	X					27						52						77						
3	X					28						53						78						
4						29						54						79						
5						30						55						80						
6						31						56						81						
7						32						57						82						
8						33						58						83						
9						34						59						84						
10						35						60						85						
11						36						61						86						
12						37						62						87						
13						38						63						88						
14						39						64						89						
15						40						65						90						
16						41						66						91						
17						42						67						92						
18						43						68						ATTACHMENT						
19						44						69						1						
20						45						70						2						
21						46						71						3						
22						47						72						4						
23						48						73						5						
24						49						74						6						
25						50						75						7						

For Devices with voltage less than 50 VDC which their body have bonding to pipe/equipment via process connection no need to earth connection of cable armor and device body in instrument side.

NOTES:
 1. BOLT SIZES FOR CONNECTIONS TO SKID WILL BE AS FOLLOWS:
 • 6mm² = M6 BOLT
 • 16mm² = M8 BOLT



PE BOSSES + EARTHING BAR AT 2 OPPOSITE CORNERS OF SKID



PT : PRESSURE TRANSMITTER
 TT : TEMPERATURE TRANSMITTER
 PCV : PRESSURE CONTROL VALVE
 LCP : LOCAL CONTROL PANEL
 JB : JUNCTION BOX
 M : MOTOR

REV.	DATE	DESCRIPTION	DRAWN	CHECK	APPROVED
01	28-11-23	ISSUE FOR APPROVAL	AZ	RB	SK

CLIENT: CONTRACTOR: VENDOR:

THIS DOCUMENT HAS BEEN PRODUCED BY CONTRACTOR FOR LIDCO IT IS CONFIDENTIAL AND CANNOT BE DISCLOSED TO OR USED BY ANY THIRD PARTY FOR ANY PURPOSE, WITHOUT PRIOR WRITTEN CONSENT.

PROJECT TITLE: LIDCO, Pars SEE Zone, Assaluyeh Integrated Methanol and Ammonia Plant 3000 MTPD MeOH/900 MTPD NH3 PROJECT

DRAWING TITLE: EARTHING DIAGRAM

DOCUMENT No: N-278-VD-6019-EL-DIA-0036-01 SC.

SIZE: A3

PROJECT No.	VENDOR DOC.	P.O. No.	DEPARTMENT	DOC. TYPE	SERIAL No.	REV.	SHEET No.
N278	VD	6019	EL	DIA	0036	01	3 OF 3