



DEHDASHT PETROCHEMICAL INDUSTRY COMPANY
DEHDASHT HIGH DENSITY POLYETHYLENE PROJECT



| | | | |
|--------------------------|---|--------------|----------|
| Contract No.: DPIC/98-12 | DOCUMENT TITLE: Oil Cooler Drawing | POI: IFA | Rev.: D0 |
| | DOCUMENT No: DPIC9812-000-VD-1002-ME-DWG-0017 | Sheet 1 of 3 | |

Oil Cooler Drawing (E-PK6101-1A/B)

| PURCHASER'S COMMENT/APPROVAL STATUS | | | | | | Purchaser: NARGAN |
|-------------------------------------|--|------------------|-----------------------------------|-------------|-------------|---|
| 1 | AP: Approved (Released for Manufacturing) | | | | | Requisition No.: DPIC98-12-001-000-ME-MR-4150-0001-D1 |
| <input checked="" type="checkbox"/> | AN: Approved With Minor Comments (Fabrication may Proceed) | | | | | |
| 3 | NF: Approved With Comments (Fabrication not Proceed) | | | | | |
| 4 | RJ: Rejected | | | | | Item No. (Tag No.): PK-6101 |
| 5 | NR: Not be Returned | | | | | |
| Date: | <input type="text" value="11.01.2022"/> | Signature: | <input type="text" value="A.AB"/> | | | Vendor Doc. No.: DPIC9812-000-VD-1002-ME-DWG-0017-D0 |
| | | | | | | |
| | | | | | | |
| | | | | | | |
| | | | | | | |
| D0 | 23-DEC.-21 | IFA | A.VOSOUGH | DR.A.NEJATI | DR.A.NEJATI | |
| REV. | DATE ISSUE | Purpose of Issue | PREPARED | CHECKED | APPROVED | |

This document is the property of DPIC. Any unauthorized attempt to reproduce it, in any form, is strictly prohibited.



DEHDASHT PETROCHEMICAL INDUSTRY COMPANY
DEHDASHT HIGH DENSITY POLYETHYLENE PROJECT



Contract No.: DPIC/98-12

DOCUMENT TITLE: Oil Cooler Drawing

POI: IFA

Rev.: D0

DOCUMENT No: DPIC9812-000-VD-1002-ME-DWG-0017

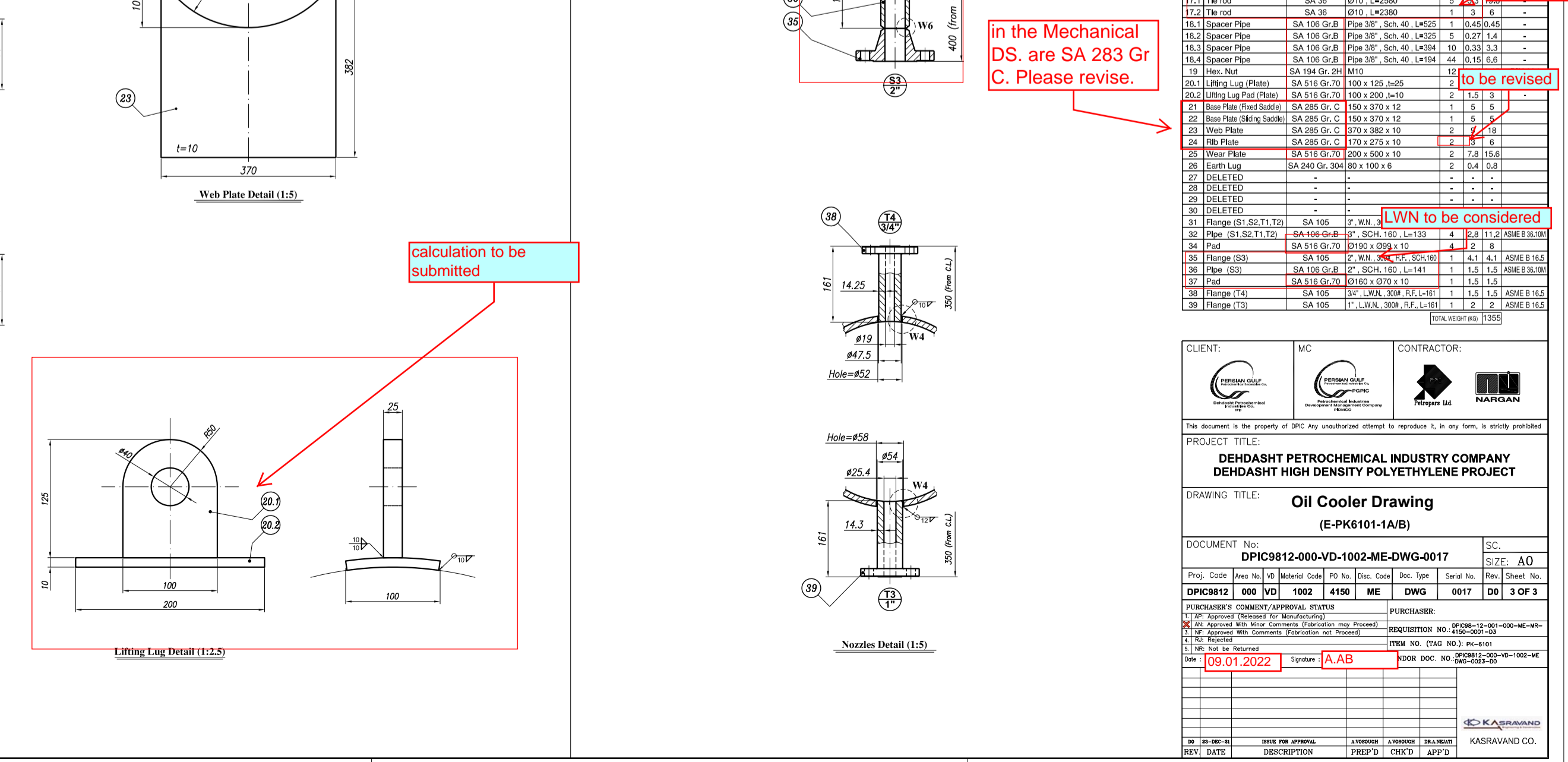
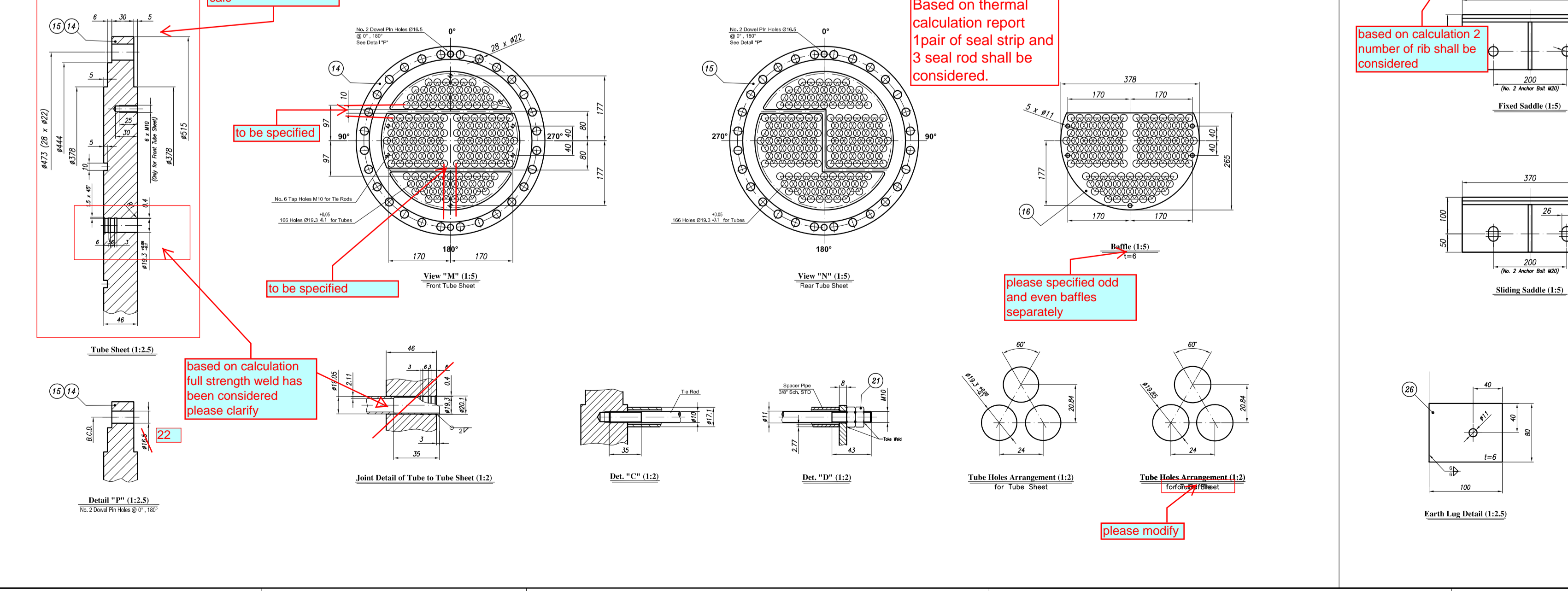
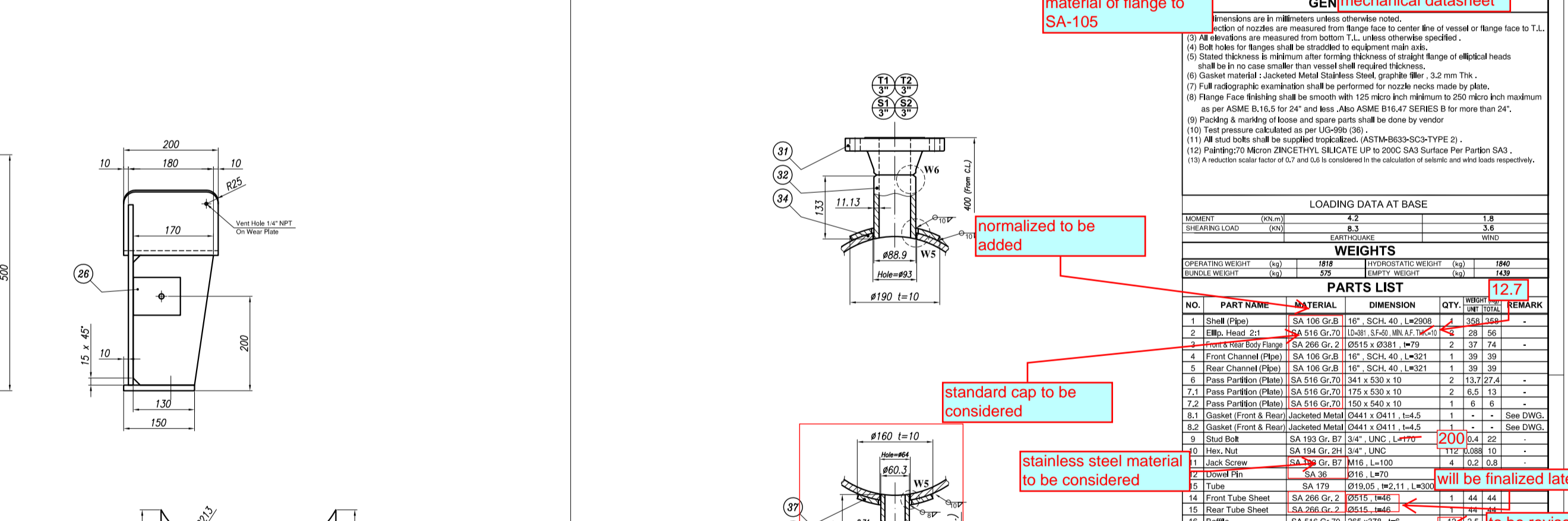
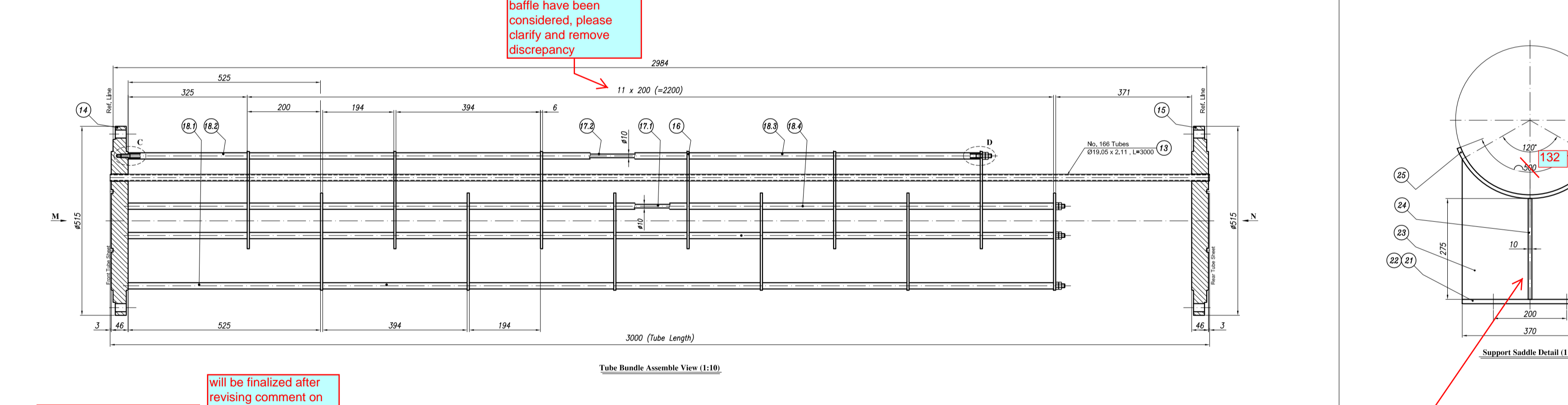
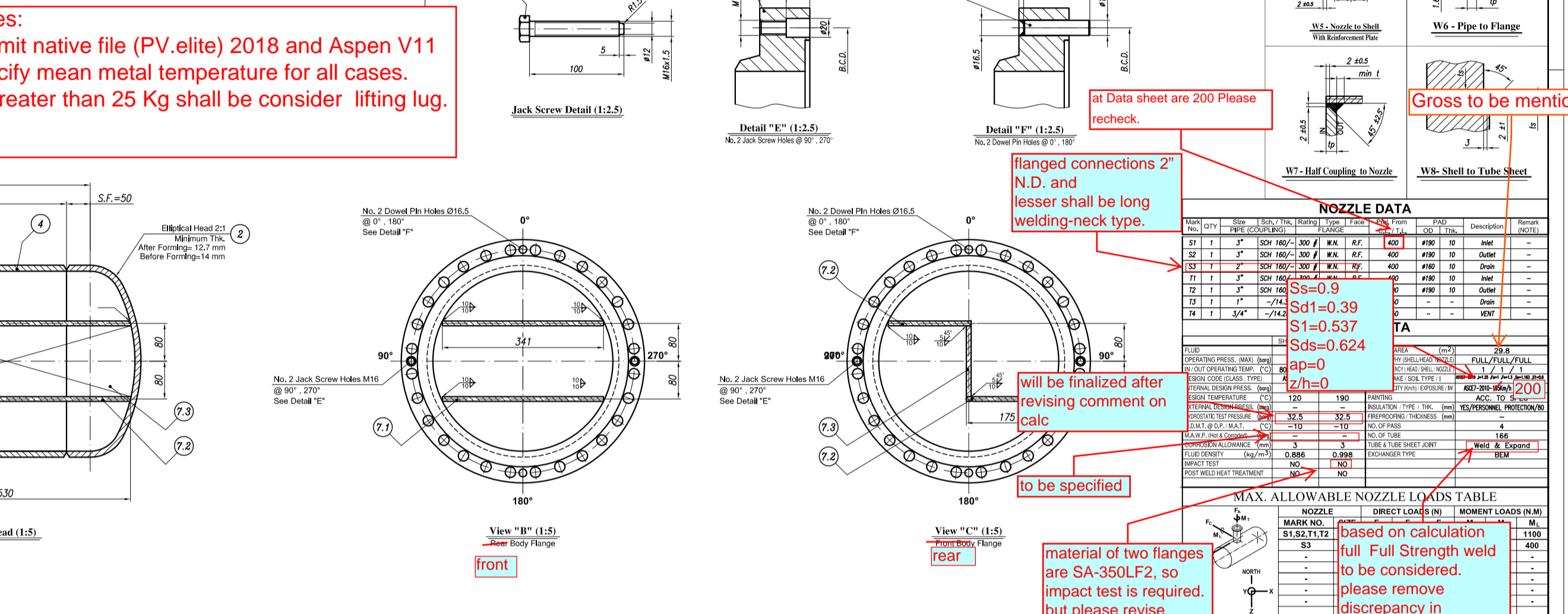
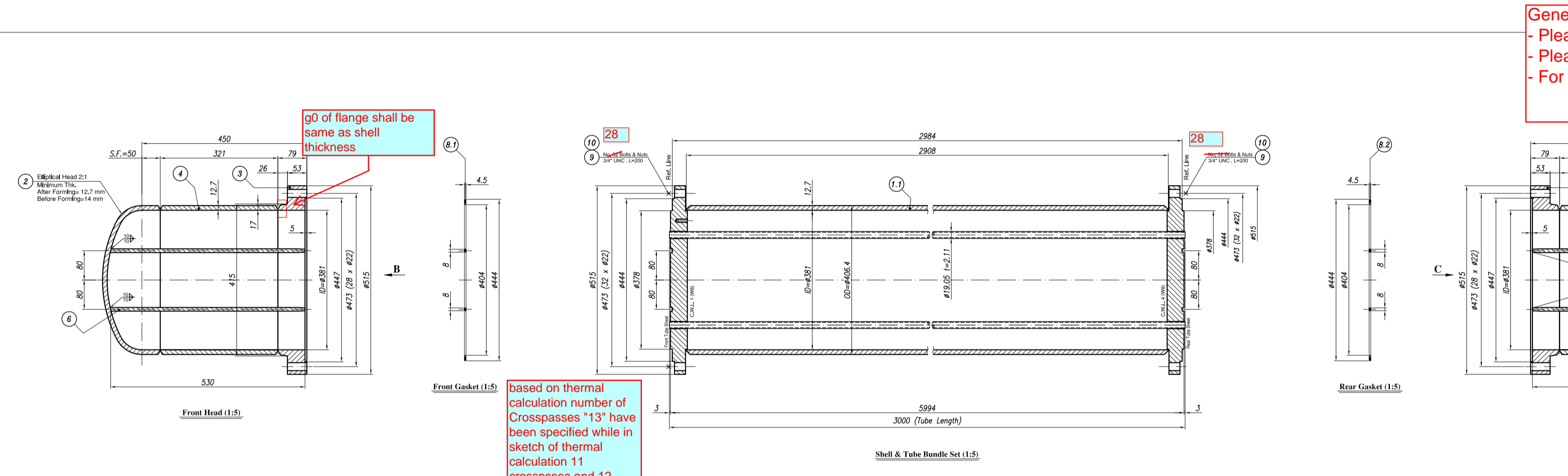
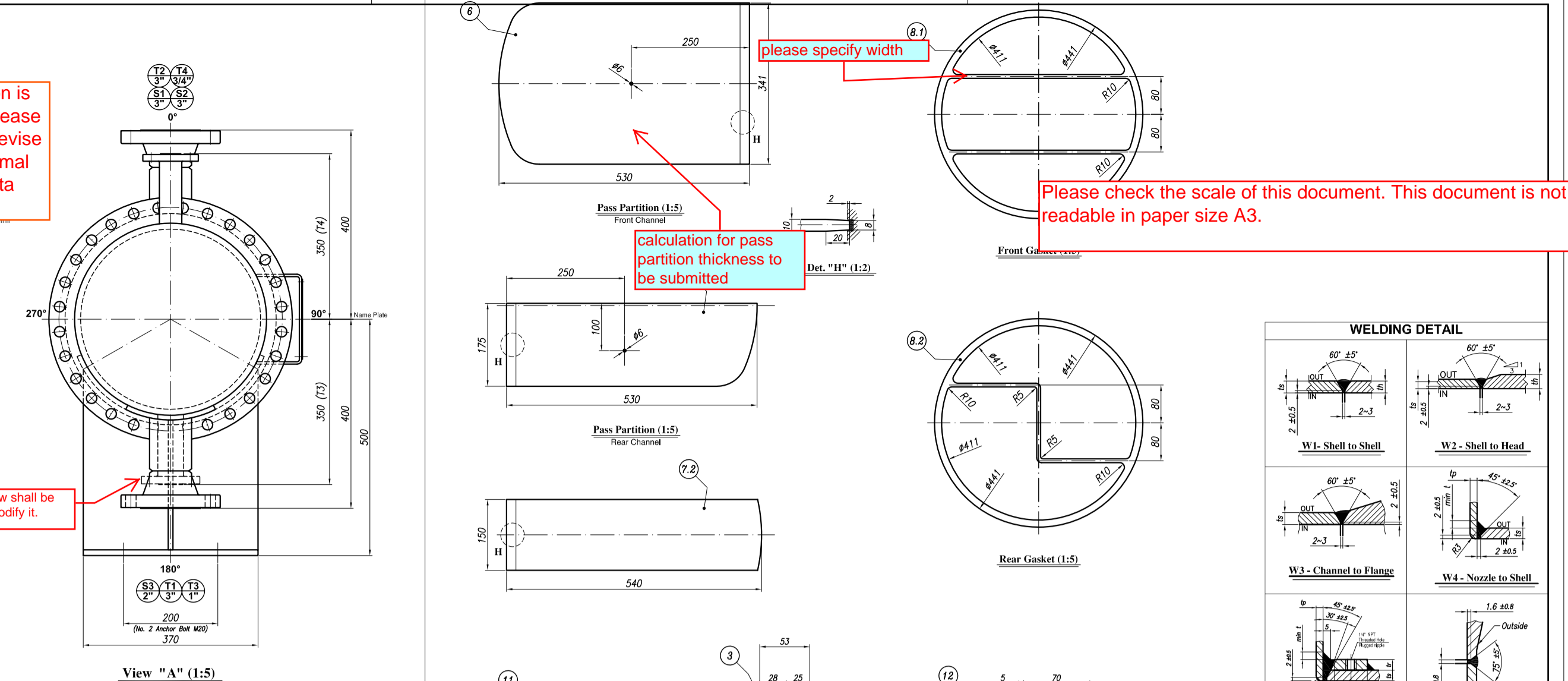
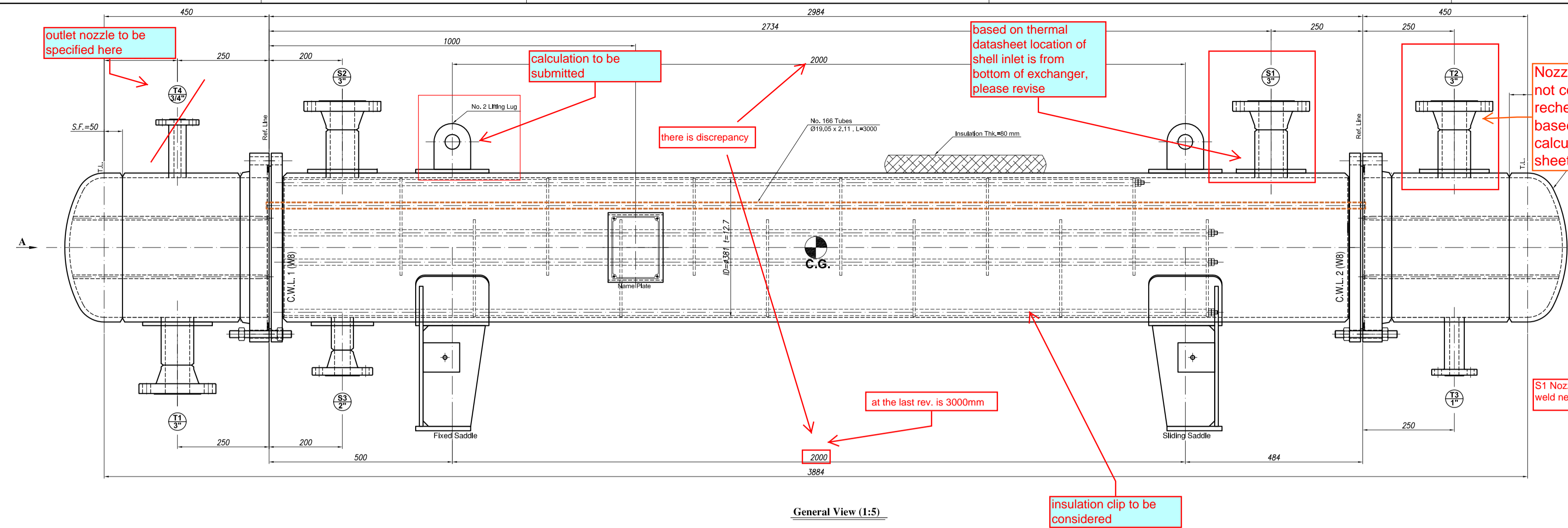
Sheet 2 of 3

TABULATION OF REVISED PAGES

| Page | Rev-D0 | Rev-D1 | Rev-D2 | Rev-D3 | Rev-D4 |
|------|--------|--------|--------|--------|--------|
| 1 | x | | | | |
| 2 | x | | | | |
| 3 | x | | | | |
| 4 | | | | | |
| 5 | | | | | |
| 6 | | | | | |
| 7 | | | | | |
| 8 | | | | | |
| 9 | | | | | |
| 10 | | | | | |
| 11 | | | | | |
| 12 | | | | | |
| 13 | | | | | |
| 14 | | | | | |
| 15 | | | | | |
| 16 | | | | | |
| 17 | | | | | |
| 18 | | | | | |
| 19 | | | | | |
| 20 | | | | | |
| 21 | | | | | |
| 22 | | | | | |
| 23 | | | | | |
| 24 | | | | | |
| 25 | | | | | |
| 26 | | | | | |
| 27 | | | | | |
| 28 | | | | | |
| 29 | | | | | |
| 30 | | | | | |
| 31 | | | | | |
| 32 | | | | | |
| 33 | | | | | |
| 34 | | | | | |
| 35 | | | | | |

| Page | Rev-D0 | Rev-D1 | Rev-D2 | Rev-D3 | Rev-D4 |
|------|--------|--------|--------|--------|--------|
| 36 | | | | | |
| 37 | | | | | |
| 38 | | | | | |
| 39 | | | | | |
| 40 | | | | | |
| 41 | | | | | |
| 42 | | | | | |
| 43 | | | | | |
| 44 | | | | | |
| 45 | | | | | |
| 46 | | | | | |
| 47 | | | | | |
| 48 | | | | | |
| 49 | | | | | |
| 50 | | | | | |
| 51 | | | | | |
| 52 | | | | | |
| 53 | | | | | |
| 54 | | | | | |
| 55 | | | | | |
| 56 | | | | | |
| 57 | | | | | |
| 58 | | | | | |
| 59 | | | | | |
| 60 | | | | | |
| 61 | | | | | |
| 62 | | | | | |
| 63 | | | | | |
| 64 | | | | | |
| 65 | | | | | |
| 66 | | | | | |
| 67 | | | | | |
| 68 | | | | | |
| 69 | | | | | |
| 70 | | | | | |

This document is the property of DPIC. Any unauthorized attempt to reproduce it, in any form, is strictly prohibited.



General Notes:
 - Please submit native file (PV.elite) 2018 and Aspen V11
 - Please specify mean metal temperature for all cases.
 - For Head greater than 25 Kg shall be consider lifting lug.

| WELDING DETAIL | |
|--|--------------------------|
| W1 - Shell to Shell | W2 - Shell to Head |
| W3 - Channel to Flange | W4 - Nozzle to Shell |
| W5 - Nozzle to Shell With Endurance Flaw | W6 - Pipe to Flange |
| W7 - Bolt Clipping to Nozzle | W8 - Shell to Tube Sheet |

| NOZZLE DATA | | | | | | | |
|-------------|-------------|-------------|--------------|-----------------|------------------|--------------|--------------|
| NOZZLE NO. | NOZZLE SIZE | NOZZLE TYPE | NOZZLE CLASS | NOZZLE MATERIAL | NOZZLE THICKNESS | NOZZLE CLASS | NOZZLE CLASS |
| 1 | 2" | WN | SA-105 | SA-105 | 0.50 | 1 | 1 |
| 2 | 2" | WN | SA-105 | SA-105 | 0.50 | 1 | 1 |
| 3 | 2" | WN | SA-105 | SA-105 | 0.50 | 1 | 1 |
| 4 | 2" | WN | SA-105 | SA-105 | 0.50 | 1 | 1 |
| 5 | 2" | WN | SA-105 | SA-105 | 0.50 | 1 | 1 |
| 6 | 2" | WN | SA-105 | SA-105 | 0.50 | 1 | 1 |
| 7 | 2" | WN | SA-105 | SA-105 | 0.50 | 1 | 1 |
| 8 | 2" | WN | SA-105 | SA-105 | 0.50 | 1 | 1 |
| 9 | 2" | WN | SA-105 | SA-105 | 0.50 | 1 | 1 |
| 10 | 2" | WN | SA-105 | SA-105 | 0.50 | 1 | 1 |
| 11 | 2" | WN | SA-105 | SA-105 | 0.50 | 1 | 1 |
| 12 | 2" | WN | SA-105 | SA-105 | 0.50 | 1 | 1 |
| 13 | 2" | WN | SA-105 | SA-105 | 0.50 | 1 | 1 |
| 14 | 2" | WN | SA-105 | SA-105 | 0.50 | 1 | 1 |
| 15 | 2" | WN | SA-105 | SA-105 | 0.50 | 1 | 1 |
| 16 | 2" | WN | SA-105 | SA-105 | 0.50 | 1 | 1 |
| 17 | 2" | WN | SA-105 | SA-105 | 0.50 | 1 | 1 |
| 18 | 2" | WN | SA-105 | SA-105 | 0.50 | 1 | 1 |
| 19 | 2" | WN | SA-105 | SA-105 | 0.50 | 1 | 1 |
| 20 | 2" | WN | SA-105 | SA-105 | 0.50 | 1 | 1 |
| 21 | 2" | WN | SA-105 | SA-105 | 0.50 | 1 | 1 |
| 22 | 2" | WN | SA-105 | SA-105 | 0.50 | 1 | 1 |
| 23 | 2" | WN | SA-105 | SA-105 | 0.50 | 1 | 1 |
| 24 | 2" | WN | SA-105 | SA-105 | 0.50 | 1 | 1 |
| 25 | 2" | WN | SA-105 | SA-105 | 0.50 | 1 | 1 |
| 26 | 2" | WN | SA-105 | SA-105 | 0.50 | 1 | 1 |
| 27 | 2" | WN | SA-105 | SA-105 | 0.50 | 1 | 1 |
| 28 | 2" | WN | SA-105 | SA-105 | 0.50 | 1 | 1 |
| 29 | 2" | WN | SA-105 | SA-105 | 0.50 | 1 | 1 |
| 30 | 2" | WN | SA-105 | SA-105 | 0.50 | 1 | 1 |
| 31 | 2" | WN | SA-105 | SA-105 | 0.50 | 1 | 1 |
| 32 | 2" | WN | SA-105 | SA-105 | 0.50 | 1 | 1 |
| 33 | 2" | WN | SA-105 | SA-105 | 0.50 | 1 | 1 |
| 34 | 2" | WN | SA-105 | SA-105 | 0.50 | 1 | 1 |
| 35 | 2" | WN | SA-105 | SA-105 | 0.50 | 1 | 1 |
| 36 | 2" | WN | SA-105 | SA-105 | 0.50 | 1 | 1 |
| 37 | 2" | WN | SA-105 | SA-105 | 0.50 | 1 | 1 |
| 38 | 2" | WN | SA-105 | SA-105 | 0.50 | 1 | 1 |
| 39 | 2" | WN | SA-105 | SA-105 | 0.50 | 1 | 1 |
| 40 | 2" | WN | SA-105 | SA-105 | 0.50 | 1 | 1 |
| 41 | 2" | WN | SA-105 | SA-105 | 0.50 | 1 | 1 |
| 42 | 2" | WN | SA-105 | SA-105 | 0.50 | 1 | 1 |
| 43 | 2" | WN | SA-105 | SA-105 | 0.50 | 1 | 1 |
| 44 | 2" | WN | SA-105 | SA-105 | 0.50 | 1 | 1 |
| 45 | 2" | WN | SA-105 | SA-105 | 0.50 | 1 | 1 |
| 46 | 2" | WN | SA-105 | SA-105 | 0.50 | 1 | 1 |
| 47 | 2" | WN | SA-105 | SA-105 | 0.50 | 1 | 1 |
| 48 | 2" | WN | SA-105 | SA-105 | 0.50 | 1 | 1 |
| 49 | 2" | WN | SA-105 | SA-105 | 0.50 | 1 | 1 |
| 50 | 2" | WN | SA-105 | SA-105 | 0.50 | 1 | 1 |
| 51 | 2" | WN | SA-105 | SA-105 | 0.50 | 1 | 1 |
| 52 | 2" | WN | SA-105 | SA-105 | 0.50 | 1 | 1 |
| 53 | 2" | WN | SA-105 | SA-105 | 0.50 | 1 | 1 |
| 54 | 2" | WN | SA-105 | SA-105 | 0.50 | 1 | 1 |
| 55 | 2" | WN | SA-105 | SA-105 | 0.50 | 1 | 1 |
| 56 | 2" | WN | SA-105 | SA-105 | 0.50 | 1 | 1 |
| 57 | 2" | WN | SA-105 | SA-105 | 0.50 | 1 | 1 |
| 58 | 2" | WN | SA-105 | SA-105 | 0.50 | 1 | 1 |
| 59 | 2" | WN | SA-105 | SA-105 | 0.50 | 1 | 1 |
| 60 | 2" | WN | SA-105 | SA-105 | 0.50 | 1 | 1 |
| 61 | 2" | WN | SA-105 | SA-105 | 0.50 | 1 | 1 |
| 62 | 2" | WN | SA-105 | SA-105 | 0.50 | 1 | 1 |
| 63 | 2" | WN | SA-105 | SA-105 | 0.50 | 1 | 1 |
| 64 | 2" | WN | SA-105 | SA-105 | 0.50 | 1 | 1 |
| 65 | 2" | WN | SA-105 | SA-105 | 0.50 | 1 | 1 |
| 66 | 2" | WN | SA-105 | SA-105 | 0.50 | 1 | 1 |
| 67 | 2" | WN | SA-105 | SA-105 | 0.50 | 1 | 1 |
| 68 | 2" | WN | SA-105 | SA-105 | 0.50 | 1 | 1 |
| 69 | 2" | WN | SA-105 | SA-105 | 0.50 | 1 | 1 |
| 70 | 2" | WN | SA-105 | SA-105 | 0.50 | 1 | 1 |
| 71 | 2" | WN | SA-105 | SA-105 | 0.50 | 1 | 1 |
| 72 | 2" | WN | SA-105 | SA-105 | 0.50 | 1 | 1 |
| 73 | 2" | WN | SA-105 | SA-105 | 0.50 | 1 | 1 |
| 74 | 2" | WN | SA-105 | SA-105 | 0.50 | 1 | 1 |
| 75 | 2" | WN | SA-105 | SA-105 | 0.50 | 1 | 1 |
| 76 | 2" | WN | SA-105 | SA-105 | 0.50 | 1 | 1 |
| 77 | 2" | WN | SA-105 | SA-105 | 0.50 | 1 | 1 |
| 78 | 2" | WN | SA-105 | SA-105 | 0.50 | 1 | 1 |
| 79 | 2" | WN | SA-105 | SA-105 | 0.50 | 1 | 1 |
| 80 | 2" | WN | SA-105 | SA-105 | 0.50 | 1 | 1 |
| 81 | 2" | WN | SA-105 | SA-105 | 0.50 | 1 | 1 |
| 82 | 2" | WN | SA-105 | SA-105 | 0.50 | 1 | 1 |
| 83 | 2" | WN | SA-105 | SA-105 | 0.50 | 1 | 1 |
| 84 | 2" | WN | SA-105 | SA-105 | 0.50 | 1 | 1 |
| 85 | 2" | WN | SA-105 | SA-105 | 0.50 | 1 | 1 |
| 86 | 2" | WN | SA-105 | SA-105 | 0.50 | 1 | 1 |
| 87 | 2" | WN | SA-105 | SA-105 | 0.50 | 1 | 1 |
| 88 | 2" | WN | SA-105 | SA-105 | 0.50 | 1 | 1 |
| 89 | 2" | WN | SA-105 | SA-105 | 0.50 | 1 | 1 |
| 90 | 2" | WN | SA-105 | SA-105 | 0.50 | 1 | 1 |
| 91 | 2" | WN | SA-105 | SA-105 | 0.50 | 1 | 1 |
| 92 | 2" | WN | SA-105 | SA-105 | 0.50 | 1 | 1 |
| 93 | 2" | WN | SA-105 | SA-105 | 0.50 | 1 | 1 |
| 94 | 2" | WN | SA-105 | SA-105 | 0.50 | 1 | 1 |
| 95 | 2" | WN | SA-105 | SA-105 | 0.50 | 1 | 1 |
| 96 | 2" | WN | SA-105 | SA-105 | 0.50 | 1 | 1 |
| 97 | 2" | WN | SA-105 | SA-105 | 0.50 | 1 | 1 |
| 98 | 2" | WN | SA-105 | SA-105 | 0.50 | 1 | 1 |
| 99 | 2" | WN | SA-105 | SA-105 | 0.50 | 1 | 1 |
| 100 | 2" | WN | SA-105 | SA-105 | 0.50 | 1 | 1 |

| LOADING DATA AT BASE | |
|----------------------|-----|
| MARK NO. | 1 |
| MARK NO. | 2 |
| MARK NO. | 3 |
| MARK NO. | 4 |
| MARK NO. | 5 |
| MARK NO. | 6 |
| MARK NO. | 7 |
| MARK NO. | 8 |
| MARK NO. | 9 |
| MARK NO. | 10 |
| MARK NO. | 11 |
| MARK NO. | 12 |
| MARK NO. | 13 |
| MARK NO. | 14 |
| MARK NO. | 15 |
| MARK NO. | 16 |
| MARK NO. | 17 |
| MARK NO. | 18 |
| MARK NO. | 19 |
| MARK NO. | 20 |
| MARK NO. | 21 |
| MARK NO. | 22 |
| MARK NO. | 23 |
| MARK NO. | 24 |
| MARK NO. | 25 |
| MARK NO. | 26 |
| MARK NO. | 27 |
| MARK NO. | 28 |
| MARK NO. | 29 |
| MARK NO. | 30 |
| MARK NO. | 31 |
| MARK NO. | 32 |
| MARK NO. | 33 |
| MARK NO. | 34 |
| MARK NO. | 35 |
| MARK NO. | 36 |
| MARK NO. | 37 |
| MARK NO. | 38 |
| MARK NO. | 39 |
| MARK NO. | 40 |
| MARK NO. | 41 |
| MARK NO. | 42 |
| MARK NO. | 43 |
| MARK NO. | 44 |
| MARK NO. | 45 |
| MARK NO. | 46 |
| MARK NO. | 47 |
| MARK NO. | 48 |
| MARK NO. | 49 |
| MARK NO. | 50 |
| MARK NO. | 51 |
| MARK NO. | 52 |
| MARK NO. | 53 |
| MARK NO. | 54 |
| MARK NO. | 55 |
| MARK NO. | 56 |
| MARK NO. | 57 |
| MARK NO. | 58 |
| MARK NO. | 59 |
| MARK NO. | 60 |
| MARK NO. | 61 |
| MARK NO. | 62 |
| MARK NO. | 63 |
| MARK NO. | 64 |
| MARK NO. | 65 |
| MARK NO. | 66 |
| MARK NO. | 67 |
| MARK NO. | 68 |
| MARK NO. | 69 |
| MARK NO. | 70 |
| MARK NO. | 71 |
| MARK NO. | 72 |
| MARK NO. | 73 |
| MARK NO. | 74 |
| MARK NO. | 75 |
| MARK NO. | 76 |
| MARK NO. | 77 |
| MARK NO. | 78 |
| MARK NO. | 79 |
| MARK NO. | 80 |
| MARK NO. | 81 |
| MARK NO. | 82 |
| MARK NO. | 83 |
| MARK NO. | 84 |
| MARK NO. | 85 |
| MARK NO. | 86 |
| MARK NO. | 87 |
| MARK NO. | 88 |
| MARK NO. | 89 |
| MARK NO. | 90 |
| MARK NO. | 91 |
| MARK NO. | 92 |
| MARK NO. | 93 |
| MARK NO. | 94 |
| MARK NO. | 95 |
| MARK NO. | 96 |
| MARK NO. | 97 |
| MARK NO. | 98 |
| MARK NO. | 99 |
| MARK NO. | 100 |

| WEIGHTS | |
|----------|----|
| MARK NO. | 1 |
| MARK NO. | 2 |
| MARK NO. | 3 |
| MARK NO. | 4 |
| MARK NO. | 5 |
| MARK NO. | 6 |
| MARK NO. | 7 |
| MARK NO. | 8 |
| MARK NO. | 9 |
| MARK NO. | 10 |
| MARK NO. | 11 |
| MARK NO. | 12 |
| MARK NO. | 13 |
| MARK NO. | 14 |
| MARK NO. | 15 |
| MARK NO. | 16 |
| MARK NO. | 17 |
| MARK NO. | 18 |
| MARK NO. | 19 |
| MARK NO. | 20 |
| MARK NO. | 21 |
| MARK NO. | 22 |
| MARK NO. | 23 |
| MARK NO. | 24 |
| MARK NO. | 25 |
| MARK NO. | 26 |
| MARK NO. | 27 |
| MARK NO. | 28 |
| MARK NO. | 29 |
| MARK NO. | 30 |
| MARK NO. | 31 |
| MARK NO. | 32 |
| MARK NO. | 33 |
| MARK NO. | 34 |
| MARK NO. | 35 |
| MARK NO. | 36 |
| MARK NO. | 37 |
| MARK NO. | 38 |
| MARK NO. | 39 |
| MARK NO. | 40 |
| MARK NO. | 41 |
| MARK NO. | 42 |
| MARK NO. | 43 |
| MARK NO. | 44 |
| MARK NO. | 45 |
| MARK NO. | 46 |
| MARK NO. | 47 |
| MARK NO. | 48 |
| MARK NO. | 49 |
| MARK NO. | 50 |
| MARK NO. | 51 |