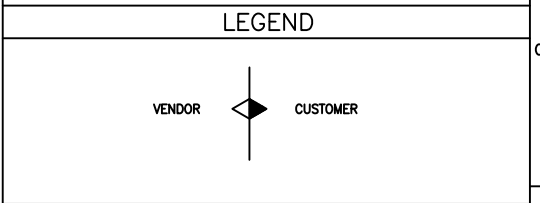


One Common KO drum will be considered as inlet for Both Compressor Units

PTC/TE will be considered for Main motors

- NOTES**
- 1- OPENING DEGREE TO BE SET DURING COMMISSIONING AND LOGGED
 - 2- DELETED.
 - 3- TYPE OF THIS VALVE IS SPRING LOAD CHECK VALVE AND IT WILL OPEN WHEN DIFFERENTIAL PRESSURE INCREASE TO 5 BAR.
 - 4- ONE FUNCTIONAL ELEMENT AND ONE SPARE. VENDOR ONLY CONNECTS FUNCTIONAL ELEMENT TO JB ON PACKAGE.
 - 5- SIGNALS ROUT TO DCS.



REFERENCE DRAWINGS	DWG. No.
--	--

Status Code	Eng.	Dept.	Date

Comment status code:

AP	Approved and released for Manufacture	NC	No Comments
CO	Not Approved	AC	Approved with Comments
RE	Rejected		

IMPORTANT: Permission to proceed does not constitute acceptance or approval of design details, calculations, analyses, test methods or materials developed or selected by the supplier and does not relieve supplier from full compliance with contractual obligation.

VENDOR:	VENDOR DOC. NO.:

Rev.	Date	Class	Purpose of Issue	Prepared by	Checked by	Approved by

OWNER:

PROJECT:

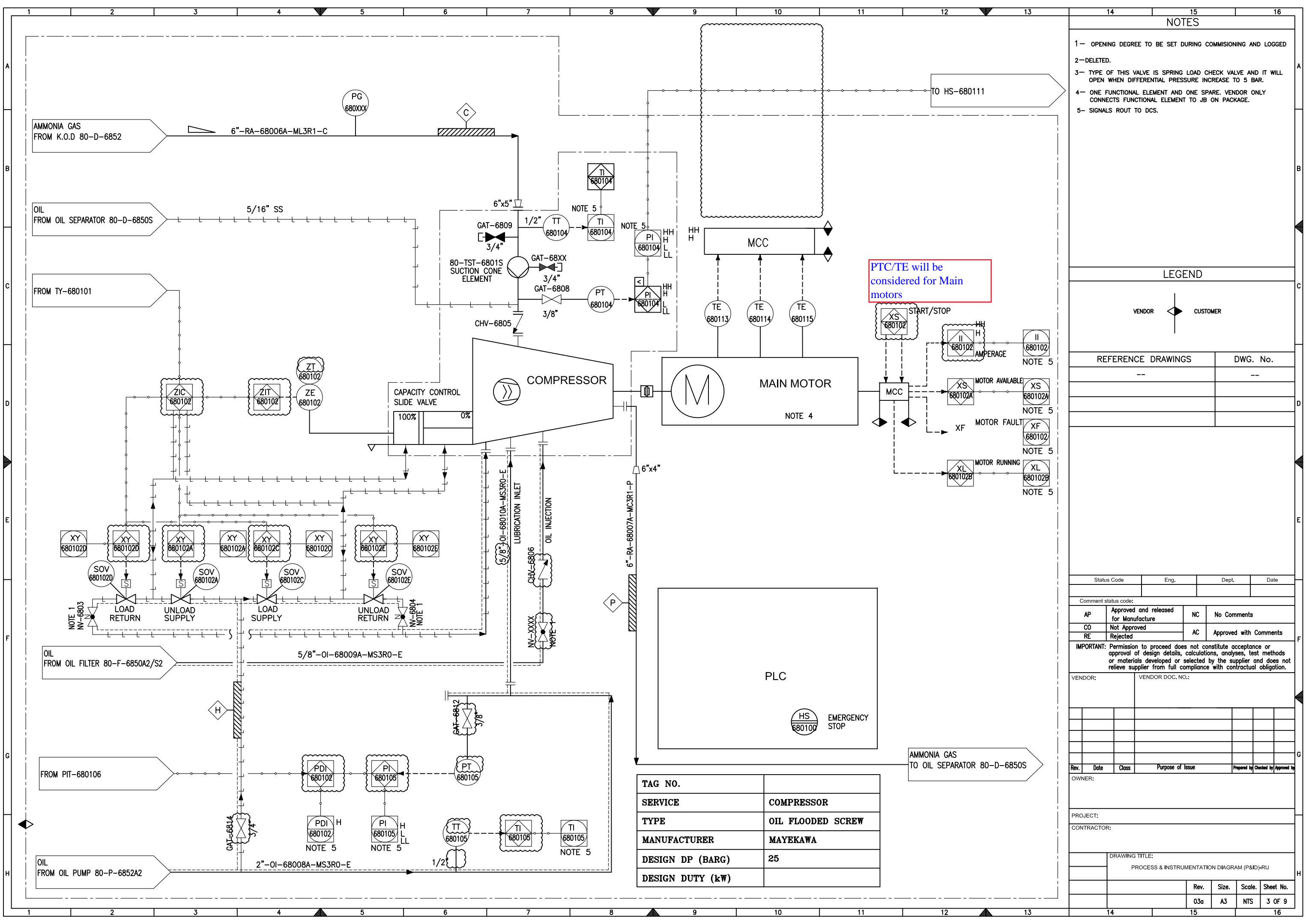
CONTRACTOR:

DRAWING TITLE:

PROCESS & INSTRUMENTATION DIAGRAM (P&ID)-RU

Rev.	Size	Scale	Sheet No.
03a	A3	NTS	2 OF 9

TAG NO.	
SERVICE	COMPRESSOR
TYPE	OIL FLOODED SCREW
MANUFACTURER	MAYEKAWA
DESIGN DP (BARG)	
DESIGN DUTY (kW)	



NOTES

- 1- OPENING DEGREE TO BE SET DURING COMMISSIONING AND LOGGED
- 2- DELETED.
- 3- TYPE OF THIS VALVE IS SPRING LOAD CHECK VALVE AND IT WILL OPEN WHEN DIFFERENTIAL PRESSURE INCREASE TO 5 BAR.
- 4- ONE FUNCTIONAL ELEMENT AND ONE SPARE. VENDOR ONLY CONNECTS FUNCTIONAL ELEMENT TO JB ON PACKAGE.
- 5- SIGNALS ROUT TO DCS.

LEGEND

VENDOR CUSTOMER

REFERENCE DRAWINGS	DWG. No.
--	--

PTC/TE will be considered for Main motors

TAG NO.	
SERVICE	COMPRESSOR
TYPE	OIL FLOODED SCREW
MANUFACTURER	MAYEKAWA
DESIGN DP (BARG)	25
DESIGN DUTY (kW)	

Status Code	Eng.	Dept.	Date

Comment status code:

AP	Approved and released for Manufacture	NC	No Comments
CO	Not Approved	AC	Approved with Comments
RE	Rejected		

IMPORTANT: Permission to proceed does not constitute acceptance or approval of design details, calculations, analyses, test methods or materials developed or selected by the supplier and does not relieve supplier from full compliance with contractual obligation.

VENDOR:	VENDOR DOC. NO.:

Rev.	Date	Class	Purpose of Issue	Prepared by	Checked by	Approved by

OWNER:

PROJECT:

CONTRACTOR:

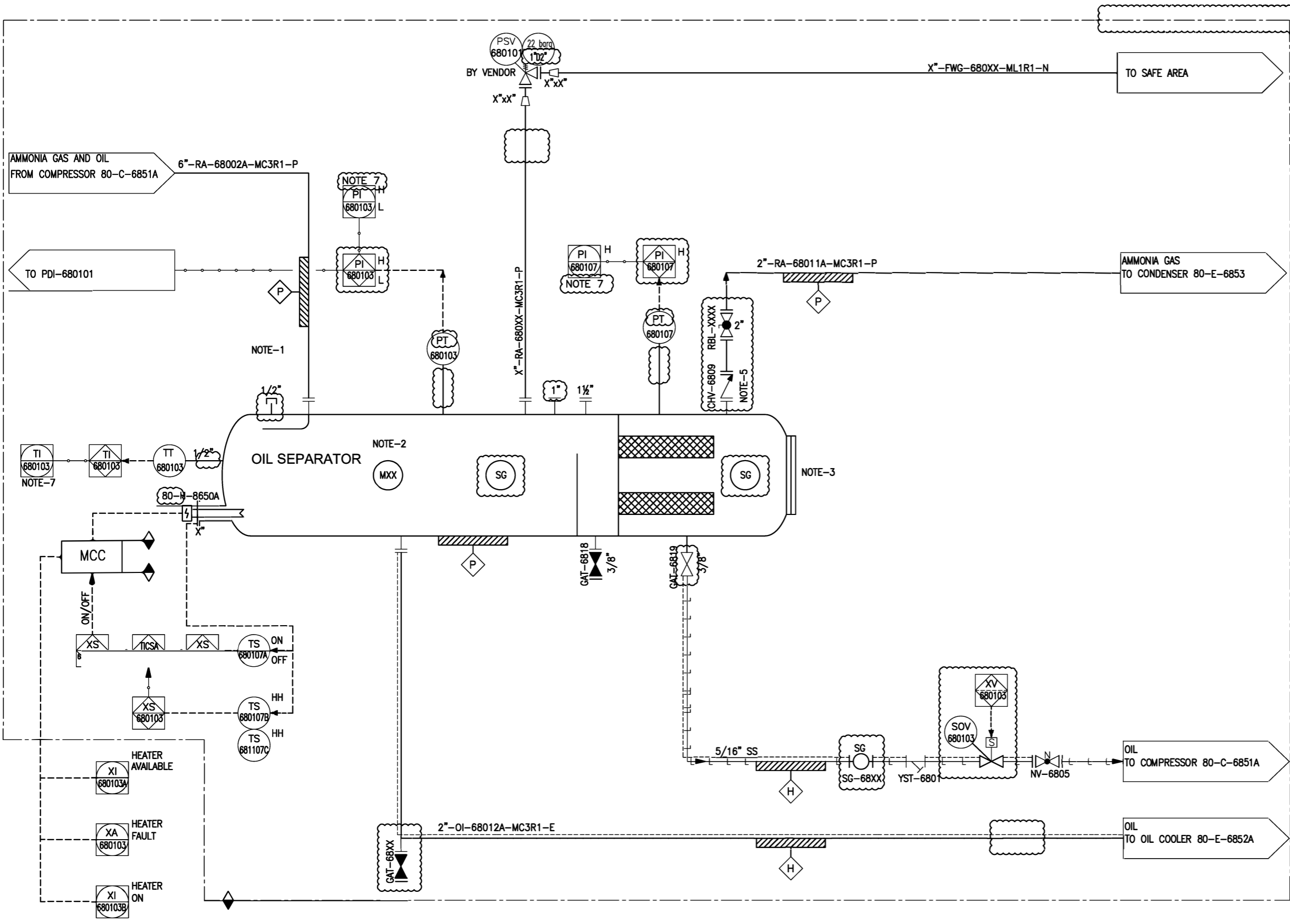
DRAWING TITLE:

PROCESS & INSTRUMENTATION DIAGRAM (P&ID)-RU

Rev.	Size	Scale	Sheet No.
03a	A3	NTS	3 OF 9

TAG NO.	
SERVICE	OIL SEPARATOR
DESIGN PRESS. (BARG)	22
DESIGN TEMP. (°C)	5 / 120
ID x L (mm)	

- NOTES
- OIL TOP UP & VACUUM CONNECTION.
 - HAND HOLE.
 - INSPECTION HOLE.
 - LOCK OPEN DURING OPERATION LOOKING METHOD AND DEVICE BY SITE OPERATOR.
 - STOP CHECK VALVE FOR PREVENT SPIN BACK.
 - SIZE OF PSV WILL BE FINALIZED ON NEXT STAGE.
 - SIGNAL ROUT TO DCS.



LEGEND

VENDOR CUSTOMER

REFERENCE DRAWINGS	DWG. No.
--	--

Status Code	Eng.	Dept.	Date

Comment status code:

AP	Approved and released for Manufacture	NC	No Comments
CO	Not Approved	AC	Approved with Comments
RE	Rejected		

IMPORTANT: Permission to proceed does not constitute acceptance or approval of design details, calculations, analyses, test methods or materials developed or selected by the supplier and does not relieve supplier from full compliance with contractual obligation.

VENDOR: _____ VENDOR DOC. NO.: _____

Rev.	Date	Class	Purpose of Issue	Prepared by	Checked by	Approved by

PROJECT: _____

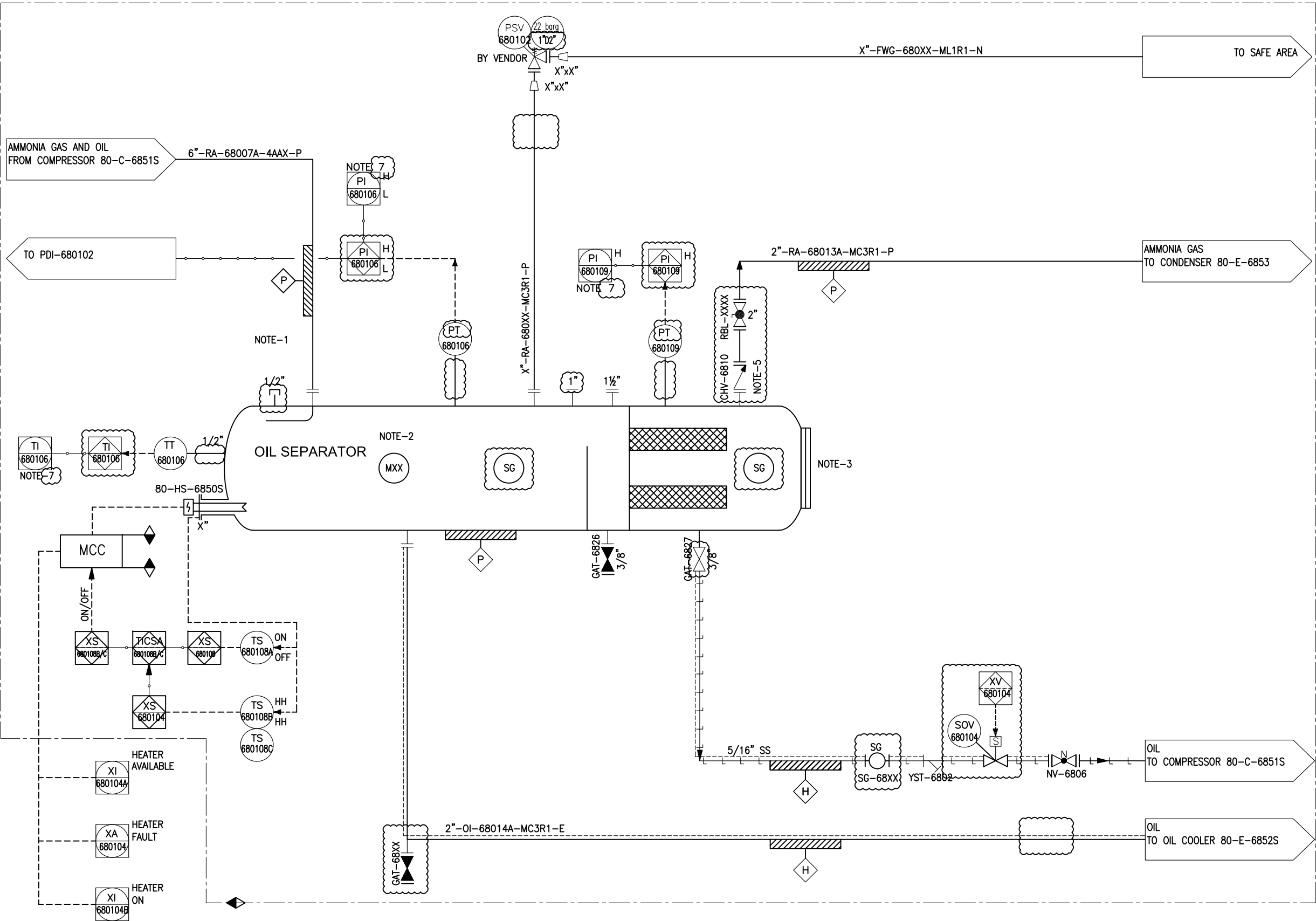
CONTRACTOR: _____

DRAWING TITLE:
PROCESS & INSTRUMENTATION DIAGRAM (P&ID)-RU

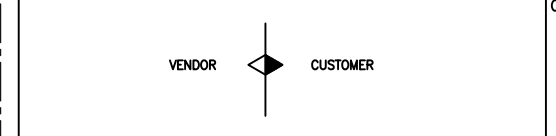
Rev.	Size	Scale	Sheet No.
03a	A3	NTS	4 OF 9

TAG NO.	
SERVICE	OIL SEPARATOR
DESIGN PRESS. (BARG)	
DESIGN TEMP. (°C)	
ID x L (mm)	

- NOTES
- 1- OIL TOP UP & VACUUM CONNECTION.
 - 2- HAND HOLE.
 - 3- INSPECTION HOLE.
 - 4- LOCK OPEN DURING OPERATION LOOKING METHOD AND DEVICE BY SITE OPERATOR.
 - 5- STOP CHECK VALVE FOR PREVENT SPIN BACK.
 - 6- SIZE OF PSV WILL BE FINALIZED ON NEXT STAGE.
 - 7- SIGNAL ROUT TO DCS.



LEGEND



REFERENCE DRAWINGS	DWG. No.
--	--

Status Code	Eng.	Dept.	Date

Comment status code:

AP	Approved and released for Manufacture	NC	No Comments
CO	Not Approved	AC	Approved with Comments
RE	Rejected		

IMPORTANT: Permission to proceed does not constitute acceptance or approval of design details, calculations, analyses, test methods or materials developed or selected by the supplier and does not relieve supplier from full compliance with contractual obligation.

Rev.	Date	Class	Purpose of Issue	Prepared by	Checked by	Approved by
00						

OWNER:
PROJECT:
CONTRACTOR:

DRAWING TITLE:
PROCESS & INSTRUMENTATION DIAGRAM (P&ID)-RU

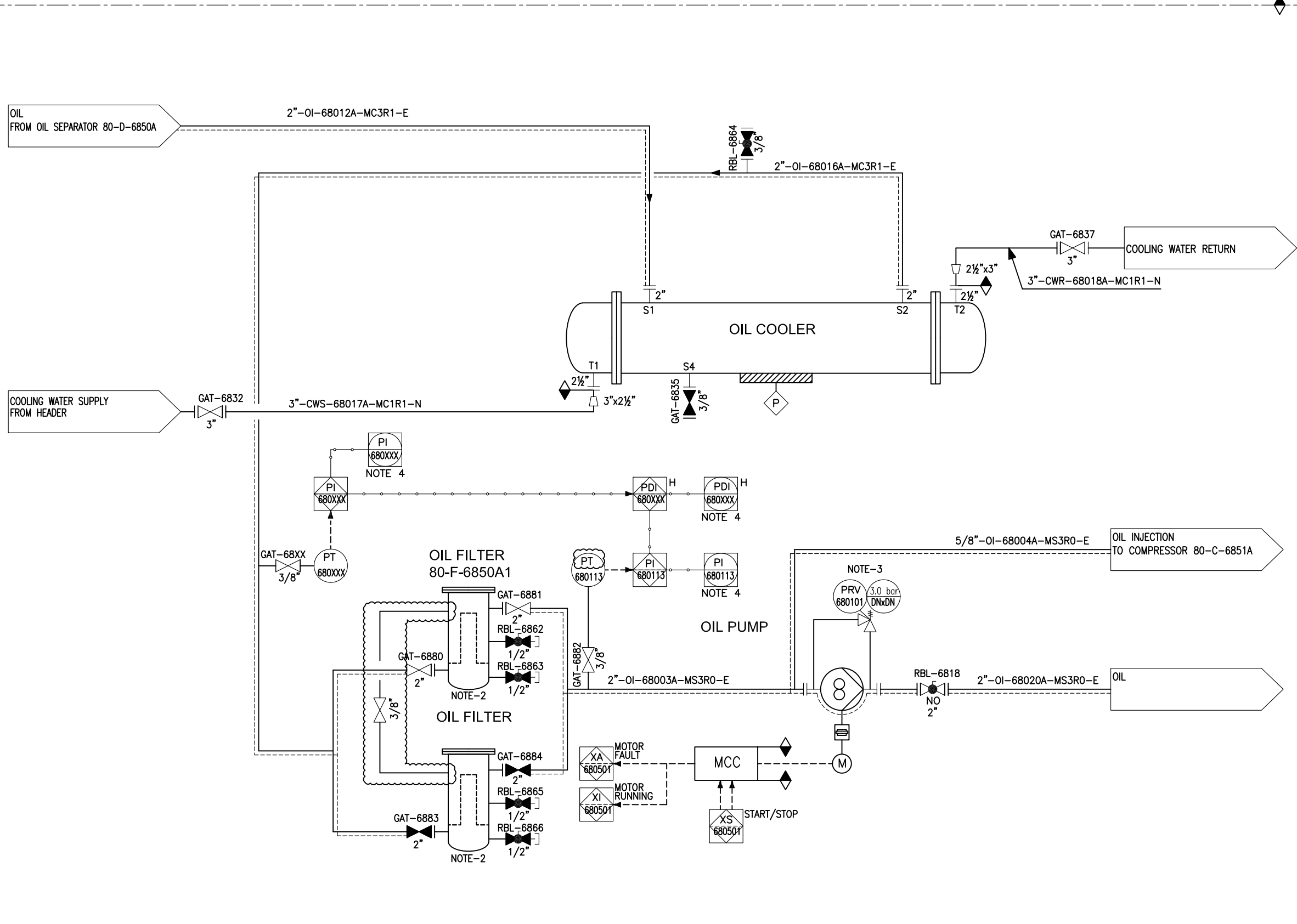
Rev.	Size	Scale	Sheet No.
03a	A3	NTS	5 OF 9

TAG NO.	
SERVICE	OIL COOLER
DESIGN PRESS. (BARG)	S: 22, T:17
DESIGN TEMP. (°C)	S:5/120, T:5/85
DESIGN DUTY (kW)	
ID x L (mm)	
TEMA TYPE	

TAG NO.	
SERVICE	OIL PUMP
TYPE	SCREW PUMP
DESIGN PRESS. (BARG)	
DESIGN TEMP. (°C)	5 / 120
RATED POWER (kW)	

TAG NO.	
SERVICE	OIL FILTER
DESIGN PRESS. (BARG)	26
DESIGN TEMP. (°C)	5/120
ID x L (mm)	MAYEKAWA

- NOTES
- 1- COLLECTION POT TO BE EMPTIED ONCE EVERY (HOLD) WEEKS TIME.
 - 2- ONE OPERATING / ONE STAND-BY.
 - 3- DP=3 BAR.
 - 4- SIGNAL ROUT TO DCS.



LEGEND

VENDOR CUSTOMER

REFERENCE DRAWINGS	DWG. No.
--	--

Status Code	Eng.	Dept.	Date

Comment status code:

AP	Approved and released for Manufacture	NC	No Comments
CO	Not Approved	AC	Approved with Comments
RE	Rejected		

IMPORTANT: Permission to proceed does not constitute acceptance or approval of design details, calculations, analyses, test methods or materials developed or selected by the supplier and does not relieve supplier from full compliance with contractual obligation.

VENDOR: _____ VENDOR DOC. NO.: _____

Rev.	Date	Class	Purpose of Issue	Prepared by	Checked by	Approved by

PROJECT: _____

JSC Contract No:	JPC 9387	DRAWING TITLE:	PROCESS & INSTRUMENTATION DIAGRAM (P&ID)-RU
TCM Project No:	3863		
JSC Doc No.		Rev.	03a
TCM Doc No.		Size.	A3
		Scale.	NTS
		Sheet No.	6 OF 9

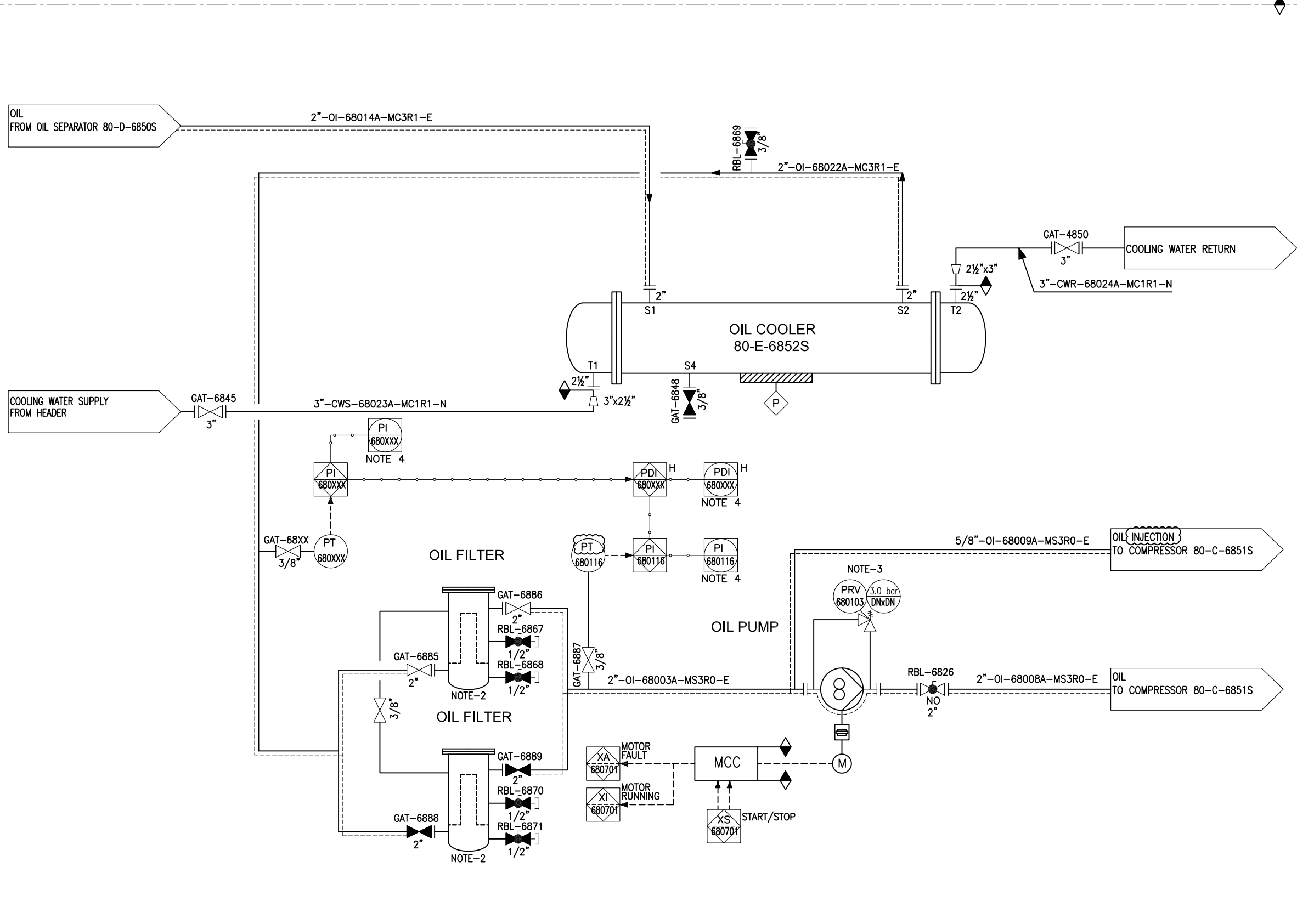
TAG NO.	80-E-6852S
SERVICE	OIL COOLER
DESIGN PRESS. (BARG)	S: 22, T:17
DESIGN TEMP. (°C)	S:5/120, T:5/85
DESIGN DUTY (kW)	124.75
SHELL ID x TUBE L (mm)	MAYEKAWA
TEMA TYPE	BEM

TAG NO.	
SERVICE	OIL PUMP
TYPE	SCREW PUMP
DESIGN PRESS. (BARG)	26
DESIGN TEMP. (°C)	5 / 120
RATED POWER (kW)	3.7

TAG NO.	
SERVICE	OIL FILTER
DESIGN PRESS. (BARG)	26
DESIGN TEMP. (°C)	5/120
ID x L (mm)	MAYEKAWA

NOTES

- COLLECTION POT TO BE EMPTIED ONCE EVERY (HOLD) WEEKS TIME.
- ONE OPERATING / ONE STAND-BY.
- DP= 3 BAR.
- SIGNAL ROUT TO DCS.



LEGEND

VENDOR CUSTOMER

REFERENCE DRAWINGS	DWG. No.
--	--

Status Code	Eng.	Dept.	Date

Comment status code:

AP	Approved and released for Manufacture	NC	No Comments
CO	Not Approved	AC	Approved with Comments
RE	Rejected		

IMPORTANT: Permission to proceed does not constitute acceptance or approval of design details, calculations, analyses, test methods or materials developed or selected by the supplier and does not relieve supplier from full compliance with contractual obligation.

VENDOR:	VENDOR DOC. NO.:
---------	------------------

Rev.	Date	Class	Purpose of Issue	Prepared by	Checked by	Approved by
00						

PROJECT:

CONTRACTOR:

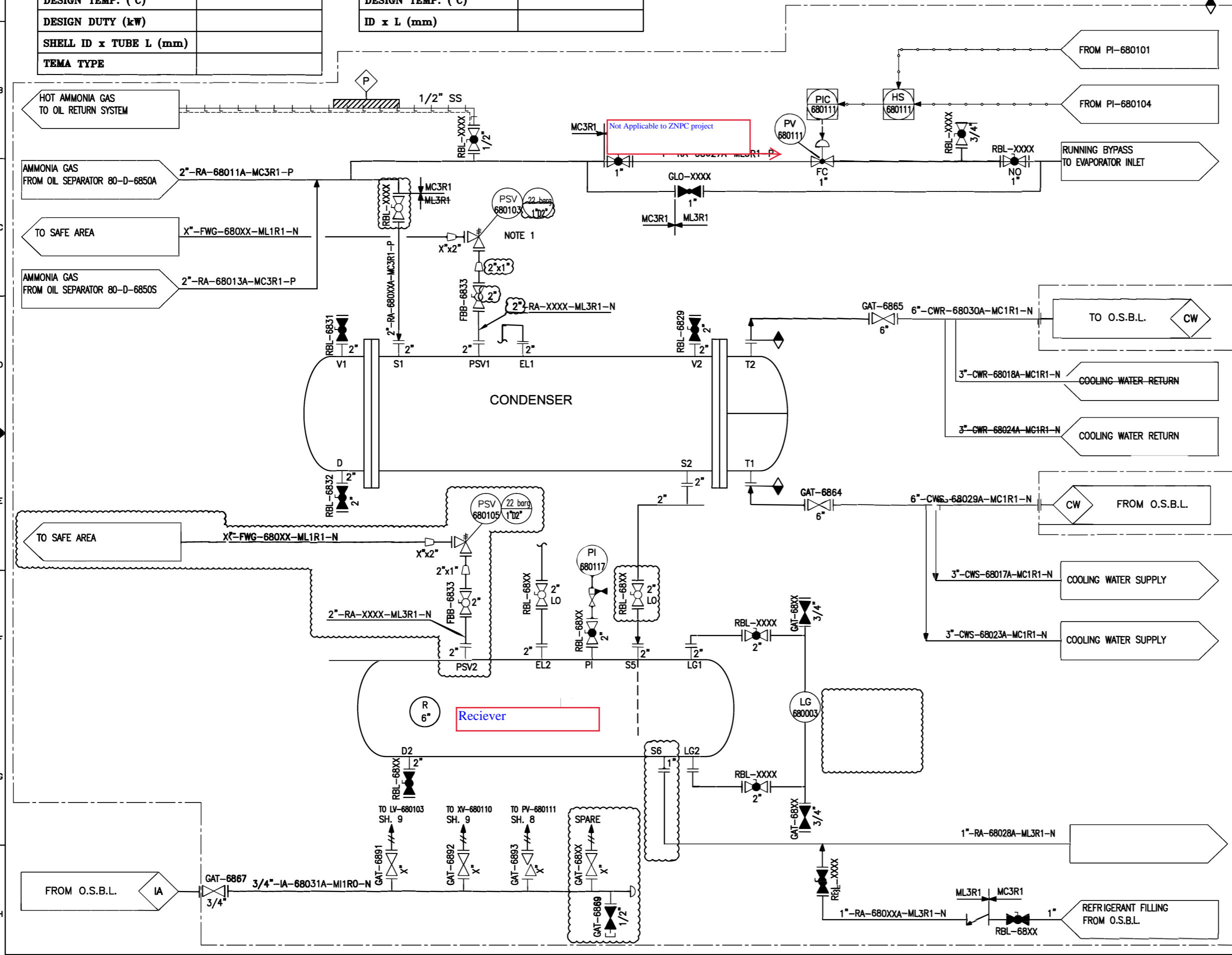
DRAWING TITLE:			
PROCESS & INSTRUMENTATION DIAGRAM (P&ID)-RU			
Rev.	Size	Scale	Sheet No.
03a	A3	NTS	7 OF 9

TAG NO.	
SERVICE	CONDENSER
DESIGN PRESS. (BARG)	
DESIGN TEMP. (°C)	
DESIGN DUTY (kW)	
SHELL ID x TUBE L (mm)	
TEMA TYPE	

TAG NO.	
SERVICE	RECEIVER
DESIGN PRESS. (BARG)	
DESIGN TEMP. (°C)	
ID x L (mm)	

Economizer will be added during detail design

NOTES
1- SIZE OF PSV WILL BE FINALIZED ON NEXT STAGE.



LEGEND
VENDOR ◊ CUSTOMER

REFERENCE DRAWINGS	DWG. No.
---	---

Status Code	Eng.	Dept.	Date

Comment status codes:
 AP Approved and released for Manufacture
 CO Not Approved
 RE Rejected
 NC No Comments
 AC Approved with Comments

VENDOR:		VENDOR DOC. NO.:	

Rev.	Date	Class	Purpose of Issue	Prepared by	Checked by	Approved by

PROJECT:
CONTRACTOR:

DRAWING TITLE:			
PROCESS & INSTRUMENTATION DIAGRAM (P&ID)-RU			
Rev.	Size	Scale	Sheet No.
03a	A3	NTS	8 OF 9