

## VALVE SPECIFICATION SHEET

MYCOM code	Description
<b>SLV-ME-HT-24VDC – EexdIICT4-30B</b>	2/2 solenoid valve, Normally closed, D.C.

### GENERAL:

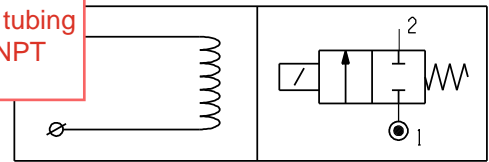
Construction	: 2/2, Normally closed
Maximum allowable pressure	: 40 bar
Response time	: 5 - 25 msec
Lifetime coil	: 30.000 hrs
Lifetime valve, expected	: 500.000 cycles, dependent upon service

### CONSTRUCTION:

Body	: Aluminum, anodized
Core tube	: Stainless steel, AISI type 304
Core and plugnut	: Stainless steel, AISI type 430F
Springs	: Stainless steel, AISI type 302
Seat	: Stainless steel, AISI type 303
Sealing	: PTFE
Disc	: PTFE
Shading coil	: None
Coil insulation class	: H (180°C)
Power consumption	: 16.8 Watt
Enclosure	: Flameproof / dust- / watertight
Electrical connections	: Screw terminal
Pipe connections	: 3/8" Rc (BSPT)
P.E.D. (97/23/EC) category.	: S.E.P. , Article 3.3



We prefer to have NPT connection as all tubing connections are NPT



Electrical Schematic

ISO-symbol

Fluids	Temperature ranges
Light oil / NH3 / Freon	-20 to +100°C

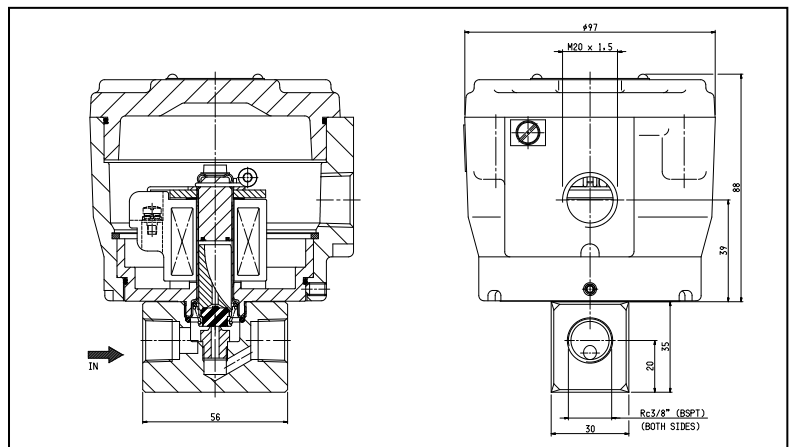
Ambient temperature ranges
-20 to +75°C

### Approval:

Explosion proof solenoid to ATEX directive 94/009/EC & IECEx standards:  
IEC-EN 60079-0/-1 & IEC-EN 61241-0/-1.  
(flameproof & dust-tight).  
EC-type examination certificate:  
LCIE 00ATEX 6008X.  
IECEX LCI 07.0015X.

### ATEX code:

II 2 G Ex d IIC/ II 2D ExtD A21  
T4 / T135°C



### PRODUCTS:

Pipe size	Orifice size	Flow coefficient		Operating pressure differential (bar)		Coil type	Catalogue number
		Kv	Kv	min.	maximum		
Rc	(mm)	(m³/h)	(l/min)			=	PTFE sealing
3/8	2,0	0,11	1,8	0	30	(D.C.) M12	SLV-ME-HT-24VDC-EexdIICT4-30B