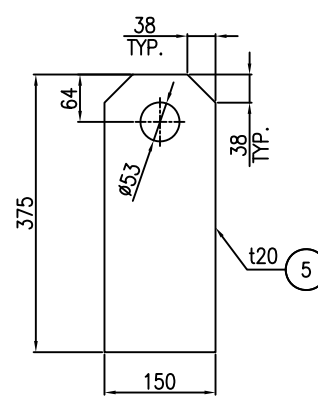
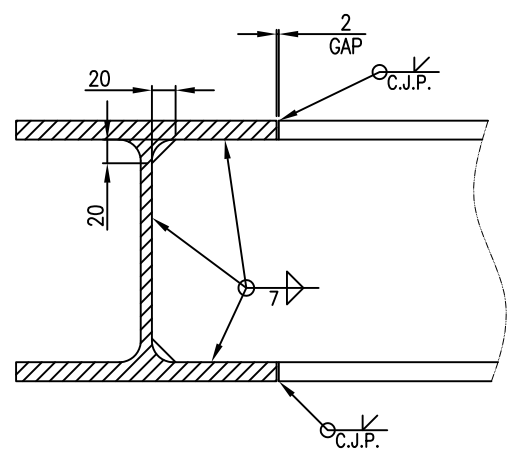
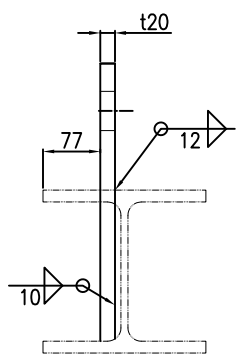


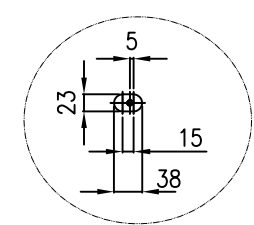
TOP VIEW



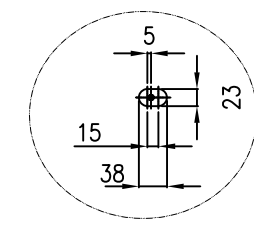
LIFTING LUG



SECTION A-A



DETAIL "B"



DETAIL "C"

NOTES

- ALL DIMENSIONS ARE IN MM.
- ANCHOR HOLES TOLERANCES: ± 0.13 IN (± 3.2 MM).
- BEAM LOCATION TOLERANCES: ± 0.13 IN (± 3.2 MM).
- SKID FLATNESS SHALL BE 0.0625 IN (1.6 MM).
- SURFACE PREPARATION SHALL BE PER PROJECT PAINTING SPECIFICATION.

CENTER OF GRAVITY

DESCRIPTION	X(MM)	Y(MM)	Z(MM)
CONDENSER	3131	1575	4000
VESSEL SKID	2217	1153	1045
COMPRESSOR SKID	790	450	860

WEIGHT

DESCRIPTION	DRY WEIGHT (Kg)	WET WEIGHT (Kg)
CONDENSER	5600	6200
VESSEL SKID	6000	7000
COMPRESSOR SKID	3500	4500

TOTAL WEIGHT 1978

PART NO.	PART NAME	MATERIAL	QUANTITY	SPECIFICATION	WEIGHT (KG)	REMARK
5	LIFTING LUG	SA516-70	4	t20 x 150 x 375	35	
4	HEB BEAM	SA36	9	HEB 220, L=1143	730	
3	HEB BEAM	SA36	1	HEB 220, L=3958	283	
2	HEB BEAM	SA36	2	HEB 220, L=2296	330	
1	HEB BEAM	SA36	2	HEB 220, L=4188	600	

BILL OF MATERIAL (BY STRUCTURE MANUFACTURER)

REV.	ISSUE DATE	DESCRIPTION	PREPARED	CHECKED	APPROVED
RO	04.21.2024	ISSUED FOR APPROVAL (IFA)	D.SH.	M.O.	A.M.

CLIENT

CONSULTING ENGINEER

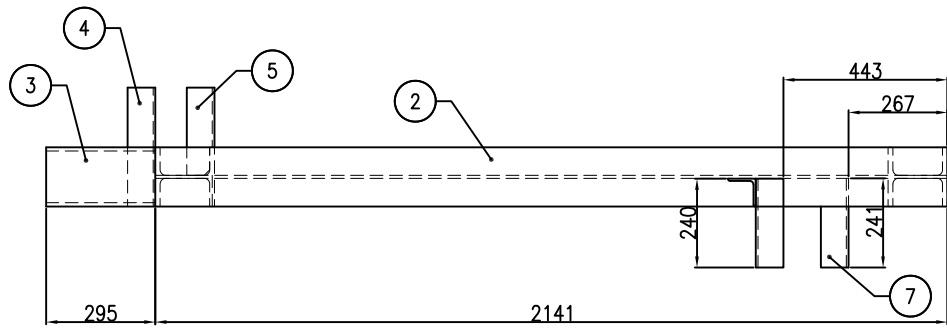
PROJECT:

DRAWING TITLE:

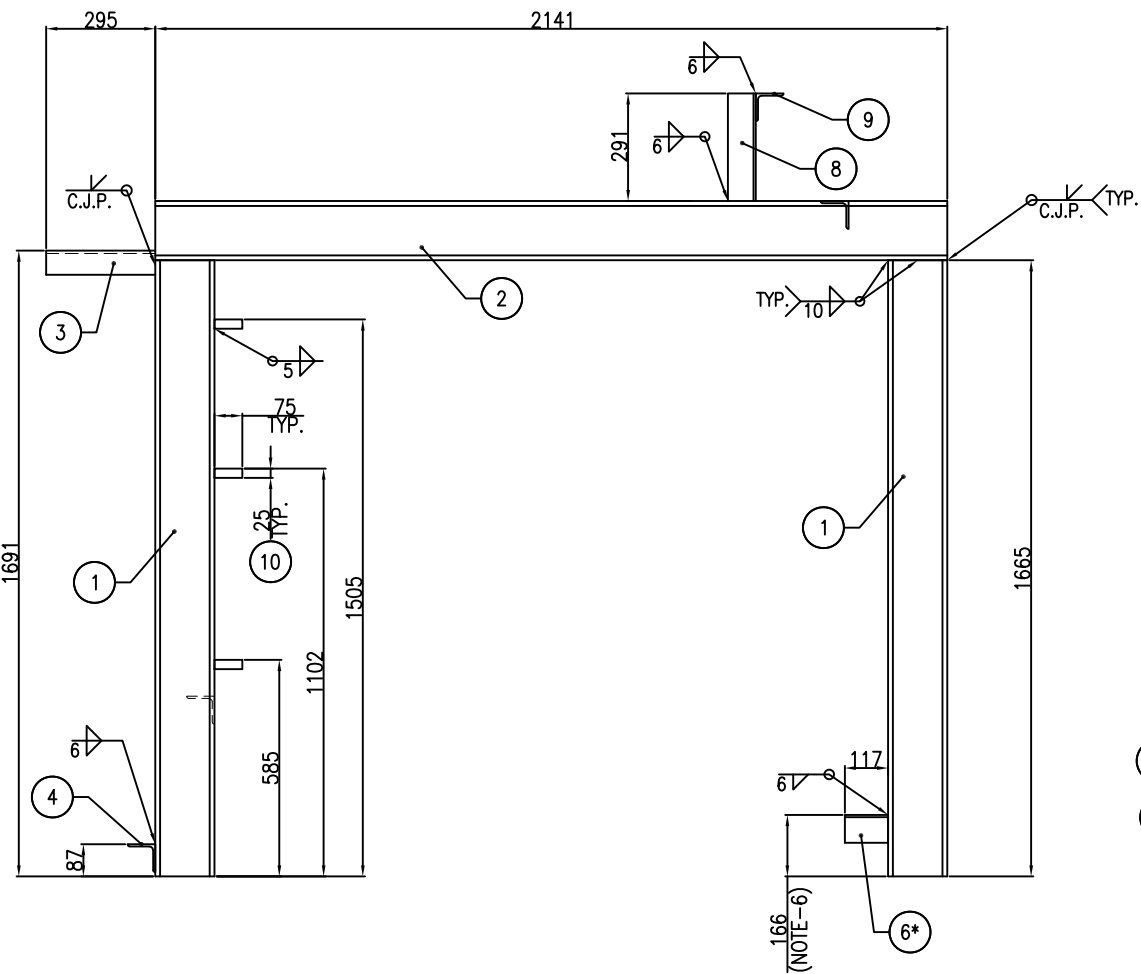
CHILLER PACKAGE SKID

DRAWING NO.	REV.	SIZE	SCALE	SHEET
-	RO	A3	NTC	1 of 5

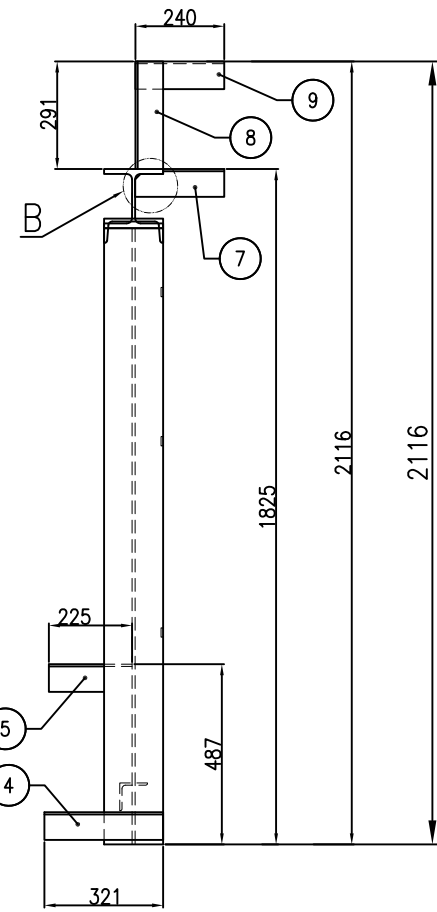




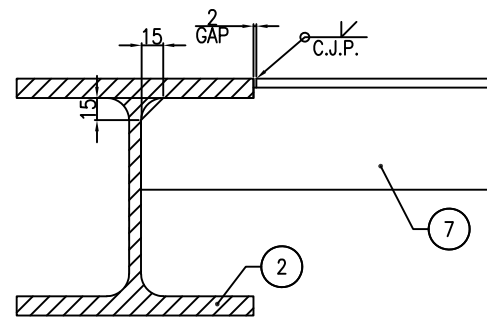
TOP VIEW



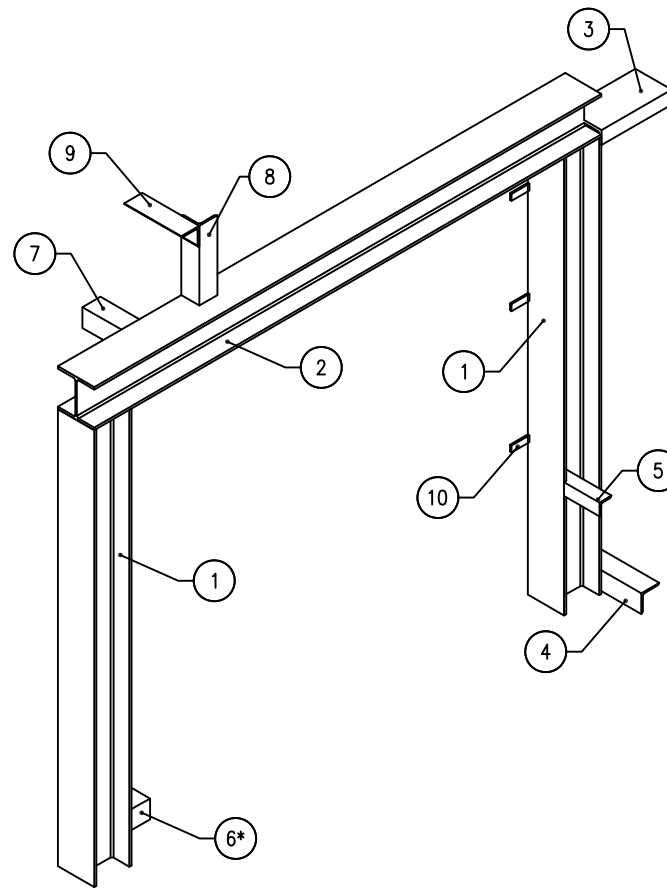
GENERAL VIEW



SIDE VIEW



DETAIL "B"



NOTES

1. ALL DIMENSIONS ARE IN MM.
2. ALL SUPPORT WELDS SHALL BE CONTINUOUSLY WELDED.
3. MATERIAL TEST REPORTS ARE REQUIRED.
4. ALL MATERIALS USED SHALL BE NEW & UNUSED.
5. ALL ITEMS MARKED WITH AN ASTERISK (*) ARE IN PACKAGE MANUFACTURER'S SCOPE OF WORK/SUPPLY.
6. ADJUST BY PACKAGE MANUFACTURER

				TOTAL WEIGHT	1
6*	ANGLE SUPPORT	SA36	1	L 75x75x6, L=117	1

BILL OF MATERIAL (BY PACKAGE MANUFACTURER)

				TOTAL WEIGHT	249
9	ANGLE SUPPORT	SA36	1	L 75x75x6, L=240	2
8	ANGLE SUPPORT	SA36	1	L 75x75x6, L=291	2
7	ANGLE SUPPORT	SA36	1	L 75x75x6, L=241	2
5	ANGLE SUPPORT	SA36	1	L 75x75x6, L=225	1.5
4	ANGLE SUPPORT	SA36	1	L 75x75x6, L=321	2.5
3	UNP BEAM	SA36	1	UNP 160, L=295	6
2	HEB BEAM	SA36	1	HEB 160, L=2141	91
1	HEB BEAM	SA36	2	HEB 160, L=1665	142

BILL OF MATERIAL (BY STRUCTURE MANUFACTURER)

REV.	ISSUE DATE	DESCRIPTION	PREPARED	CHECKED	APPROVED
RO	04.21.2024	ISSUED FOR APPROVAL (IFA)	D.SH.	M.O.	A.M.

CLIENT

CONSULTING ENGINEER

PROJECT:

DRAWING TITLE:
CHILLER PACKAGE SKID

DRAWING NO.	REV.	SIZE	SCALE	SHEET
-	RO	A3	NTC	2 of 5



NOTES

1. ALL DIMENSIONS ARE IN MM.
2. ALL SUPPORT WELDS SHALL BE CONTINUOUSLY WELDED.
3. MATERIAL TEST REPORTS ARE REQUIRED.
4. ALL MATERIALS USED SHALL BE NEW & UNUSED.

					TOTAL WEIGHT	121.2
6	ANGLE SUPPORT	SA36	1	L 75x75x6, L=170	1.2	
5	ANGLE SUPPORT	SA36	1	L 75x75x6, L=147	1	
4	ANGLE SUPPORT	SA36	1	L 75x75x6, L=640	4.5	
3	HEB BEAM	SA36	1	HEB 100, L=424	9	
2	HEB BEAM	SA36	1	HEB 160, L=713	30.5	
1	HEB BEAM	SA36	1	HEB 160, L=1754	75	

BILL OF MATERIAL (BY STRUCTURE MANUFACTURER)

REV.	ISSUE DATE	DESCRIPTION	PREPARED	CHECKED	APPROVED
RO	04.21.2024	ISSUED FOR APPROVAL (IFA)	D.SH.	M.O.	A.M.

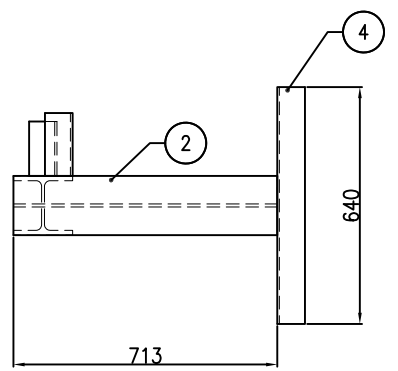
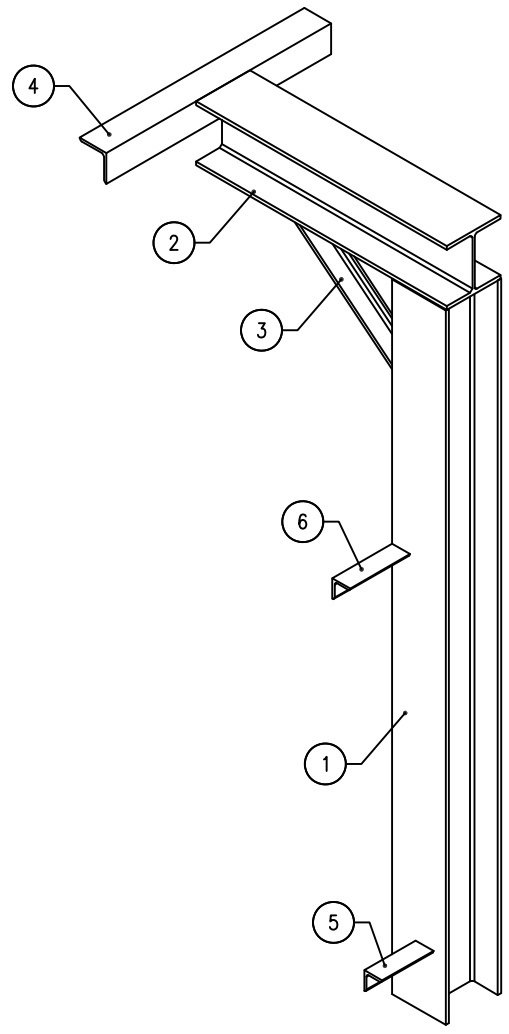
CLIENT

CONSULTING ENGINEER

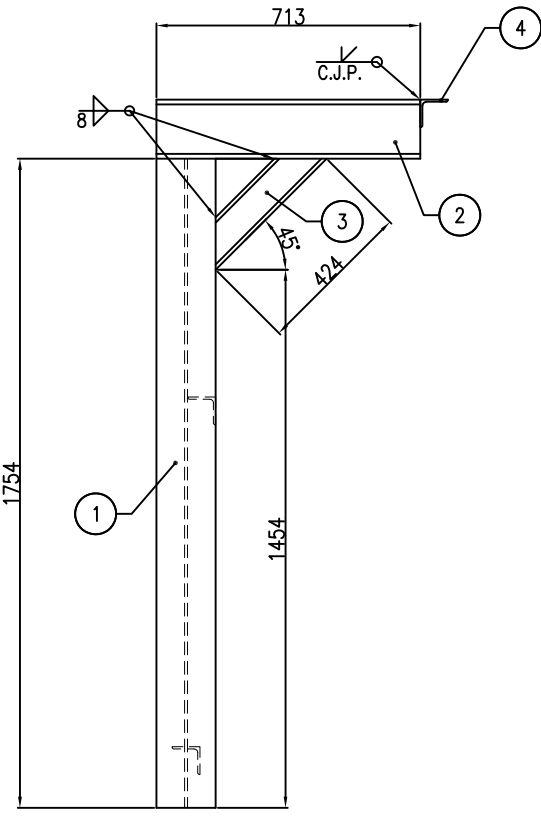
PROJECT:

DRAWING TITLE:
CHILLER PACKAGE SKID

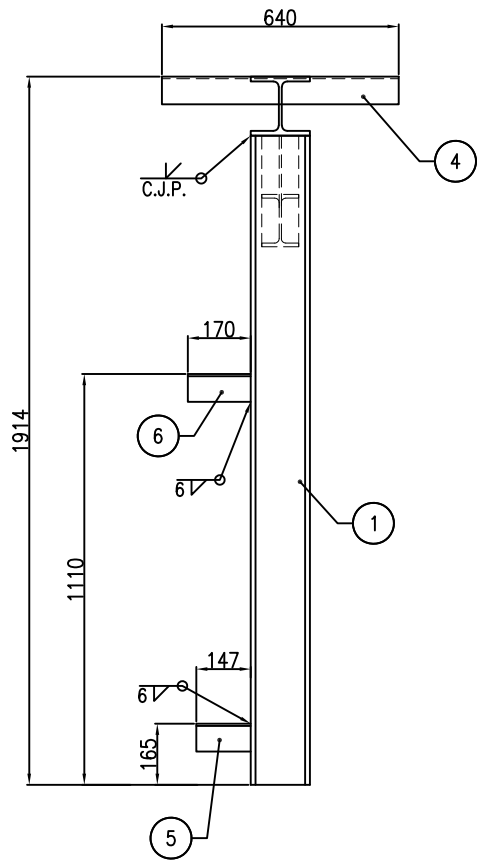
DRAWING NO.	REV.	SIZE	SCALE	SHEET
-	RO	A3	NTC	3 of 5



TOP VIEW

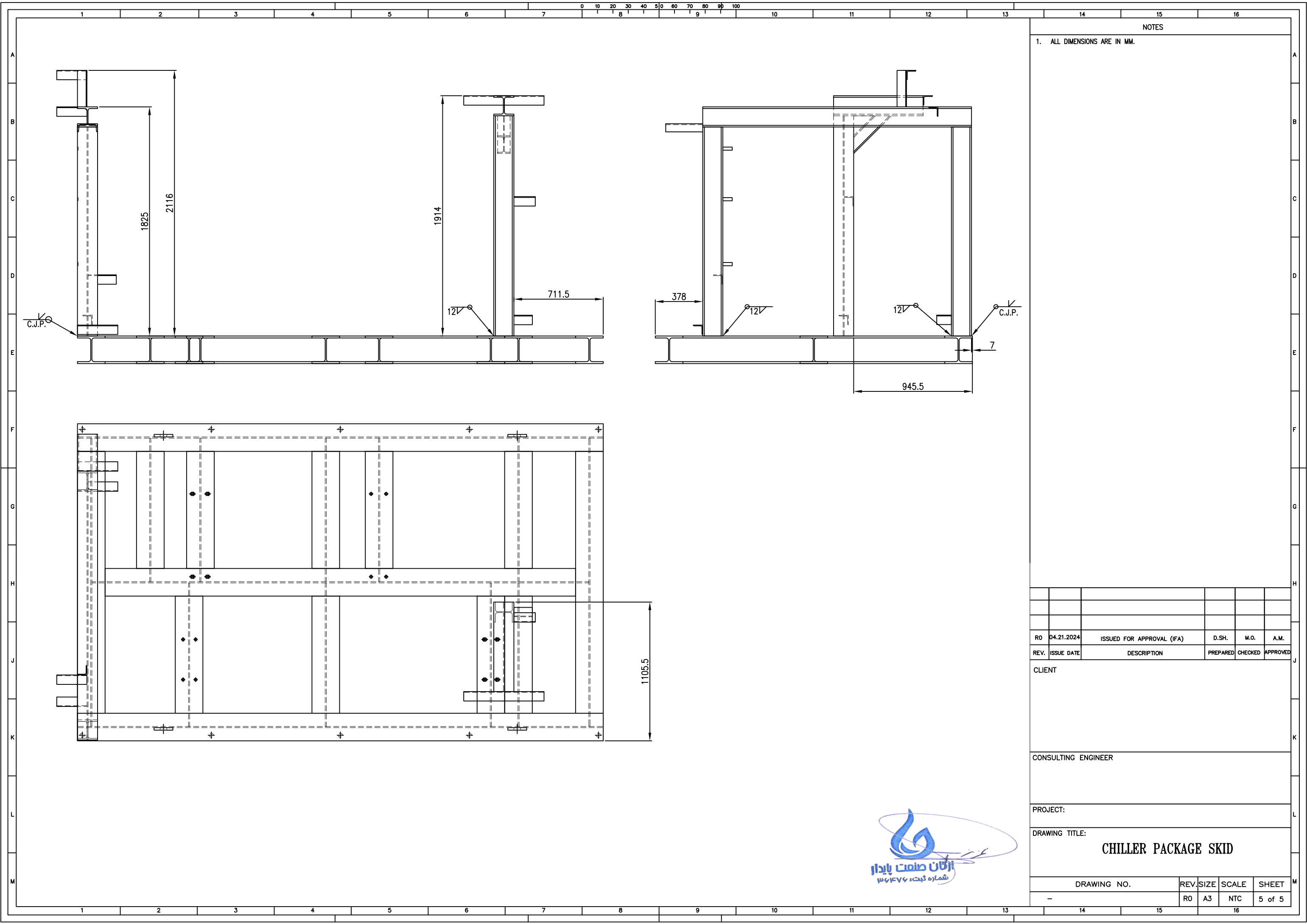


GENERAL VIEW



SIDE VIEW





NOTES

1. ALL DIMENSIONS ARE IN MM.

REV.	ISSUE DATE	DESCRIPTION	PREPARED	CHECKED	APPROVED
R0	04.21.2024	ISSUED FOR APPROVAL (IFA)	D.SH.	M.O.	A.M.

CLIENT

CONSULTING ENGINEER

PROJECT:

DRAWING TITLE:
CHILLER PACKAGE SKID

DRAWING NO.	REV.	SIZE	SCALE	SHEET
-	R0	A3	NTC	5 of 5

