

LIVELLA / BODY GAUGE	
KLINGER mod.	R100
MATERIALE / MATERIAL	LF2
CONNESSIONI / CONNECTIONS	NIPPLES 1/2" NPT
PRESS. / TEMP. RIFLESSIONE / REFLEX RATING	PN 100 / ANSI 600
PRESS. / TEMP. TRASPARENZA / NG	/
VALVOLE DI INTERCETTAZIONE / SHUT-OFF VALVES	
MODELLO E TIPO / MODEL AND TYPE	RAV VALVES 947
MATERIALE CORPO / BODY MATERIAL	LF2
MATERIALE INTERNI / TRIM MATERIAL	AISI 316
SPURGO / DRAIN	AB18 3/4" NPT/F + PLUG
SFIATO / VENT	PLUG 1/2" NPT


ILLUMINATORE / ILLUMINATOR	
GRADO DI PROTEZIONE / DEGREE OF PROTECTION	/
COSTR. Elett. / GRUPPO / ELECT. CONST. / GROUP	/
CLASSE DI TEMPERATURA / TEMP. CLASS	/
ALIMENTAZIONE / POWER SUPPLY	EN10204 - 3.1
CONNESSIONE ELETTRICA / ELECTRICAL CONNECTION	/
CERTIFICATO / CERTIFICATE	/

ACCESSORI / OPTIONS	
(A1) SFERE DI RITEGNO / CHECK BALLS	(A5) PROT. CRISTALLO IN MICA / GLASS PROT. MICA SHIELD
(A2) LASTRA ANTIBRINA / NON FROSTING BLOCK	(A6) GUARNIZIONI IN GRAFITE / GASKETS GRAPHITE
(A4) MATERIAL: NORMA NACE MR-01-03 / MATERIAL REQ.: NACE MR-01-03	(A7) SUPPORTO ILLUMINATORE IN VETRO / GLASS ILLUMINATOR SHEET SUPPORT
(A8) PROTEZ. CRISTALLO / GLASS PROTECTION	

SIGLA / MATRICOLA / TAG NUMBER / ITEM	MISURA / SIZE	C / C / Ø	VIS. / V	CONNESSIONE AL SERBATOIO / VESSEL CONNECTION	NOTE / NOTES	RICHIESTE / REQUEST
RU0001A-02	2xVI	762	493	2" ANSI 300 RF	1	A1
RU0001B-02	2xVI	762				

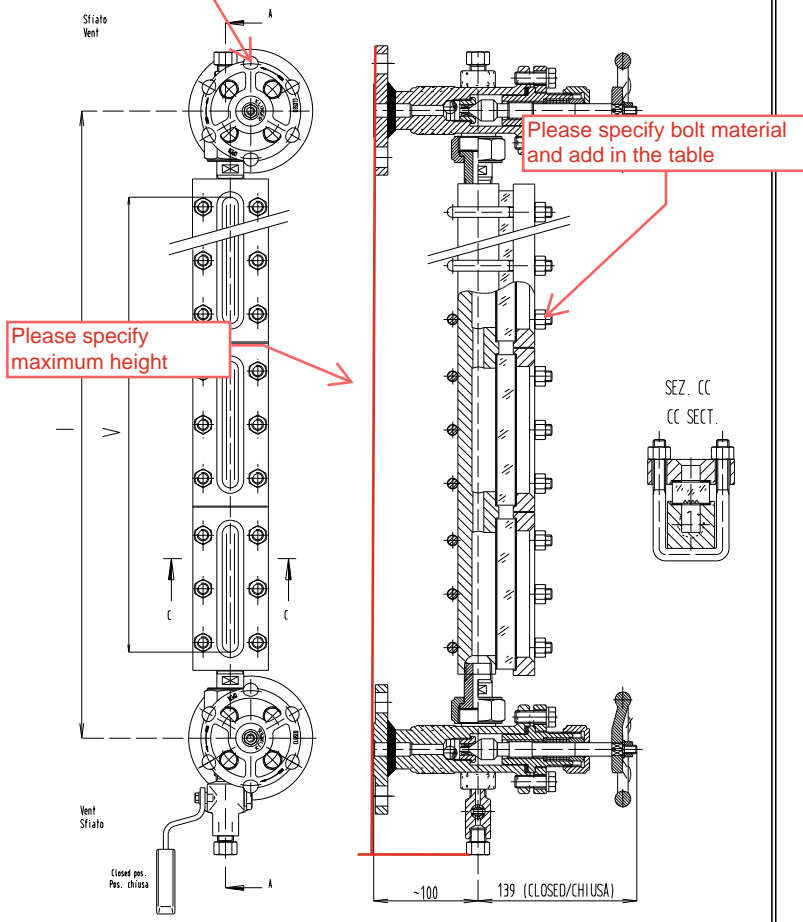
Please add the following information in drawing:
 SS tag plate to be included in scope of supply. please show the location in drawing
 Lower Medium: Propane/Liquid
 Upper Medium: Propane/Vapor
 Lower Density: 436,9 kg/m3
 Upper Density: 43,38 kg/m3°
 Operating temperature: 56,32 C
 Design temperature: -45 to 120 ° C
 Operating pressure: 19,7 bar g
 Design pressure: FV to 22 bar g
 Pressure Test: 77 barg
 Area Classification: hazardous, Exia IIB, T3 as min

DESCRIZIONE / DESCRIPTIONS						
REFLEX LEVEL GAUGE Mod. R 100/RAV947/M						
WITH DRAIN COCK VENT PLUG						
CLIENTE / CUSTOMER KL SCHOENE BERG						
ORDINE / ORDER 6077497						
NOTE / NOTES: 1) CONFIGURATION A1						

DATA / DATE 17/10/2024	DIS. / DWG. VA	APPROVED V. A
R. MODIFICA / CHANGE	APP.	DATE
TAB LGD/17731/A	REV. 0	KI. COMM. 1906/24
 KLINGER Italy S.r.l Viale De Gasperi, 88 Rho Mi Italy		

bolt holes to be straddle to north-south

SEZ. AA
AA SECT.



LG-RU0001A-02

LG-RU0001B-02