

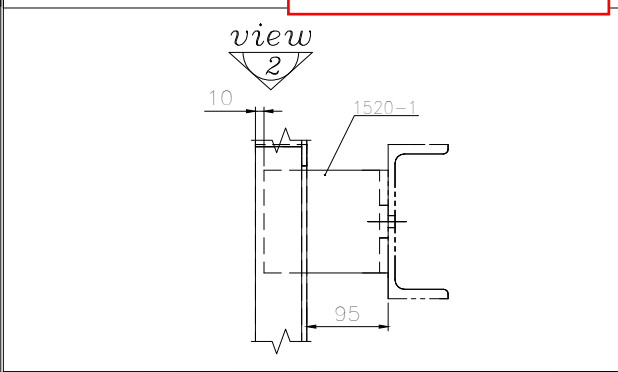
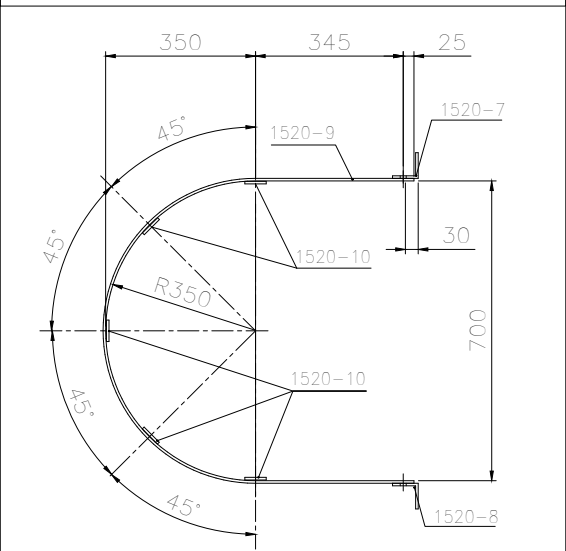
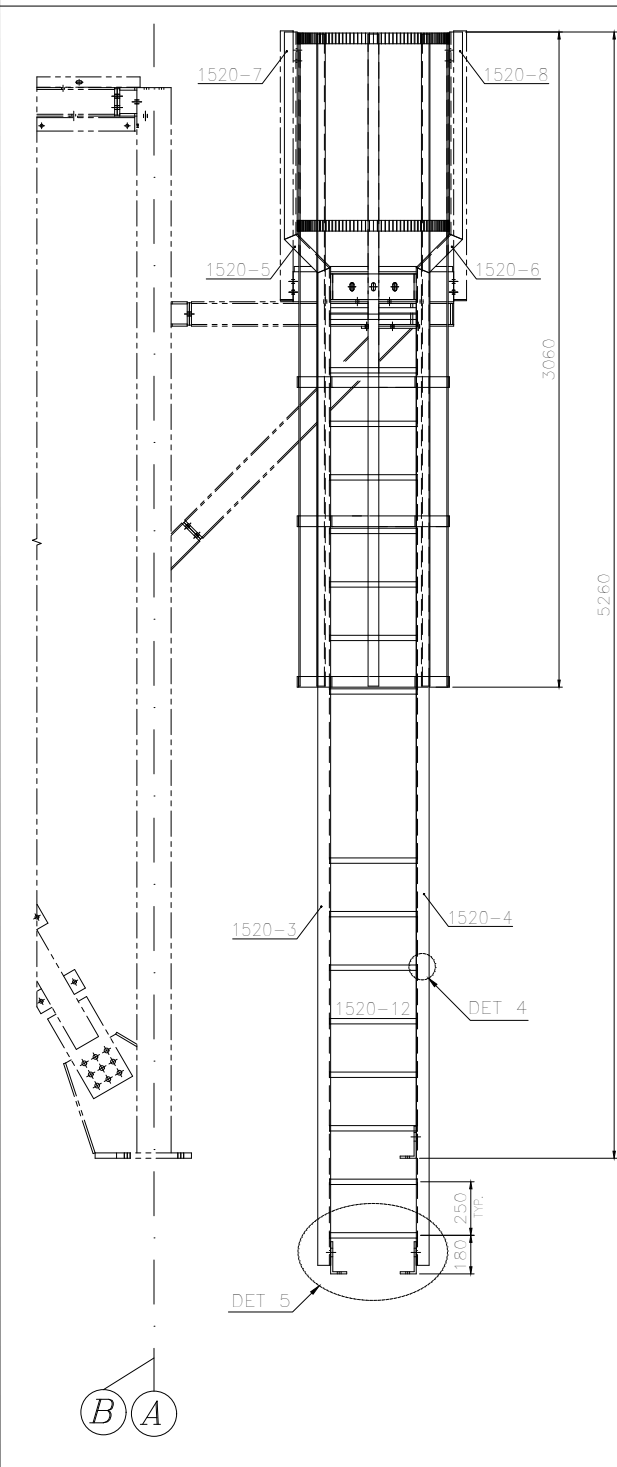
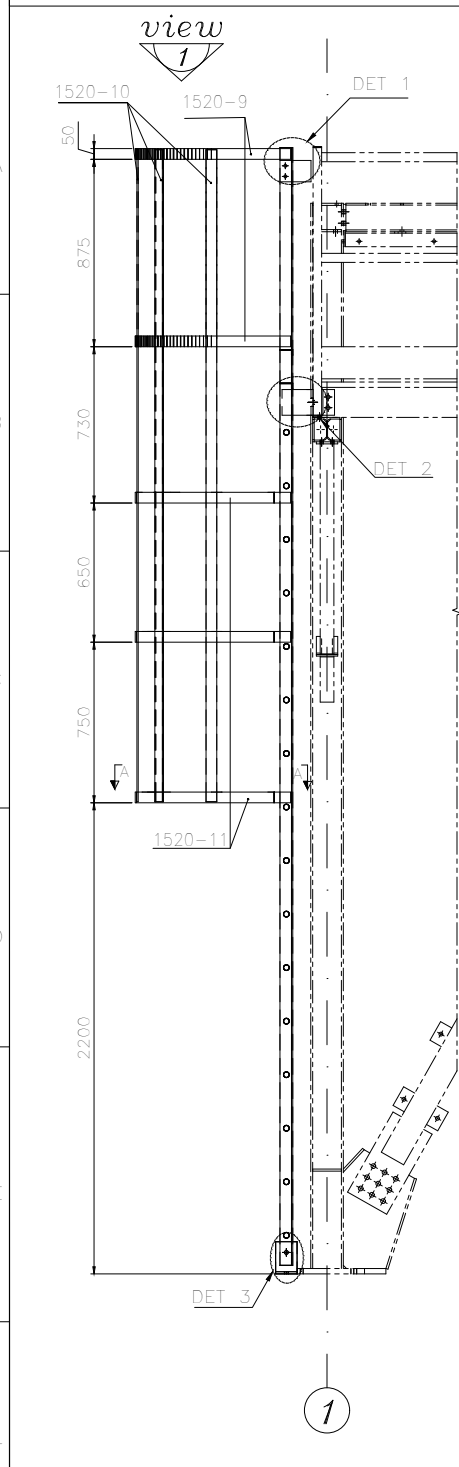
FRONT VIEW

SIDE VIEW

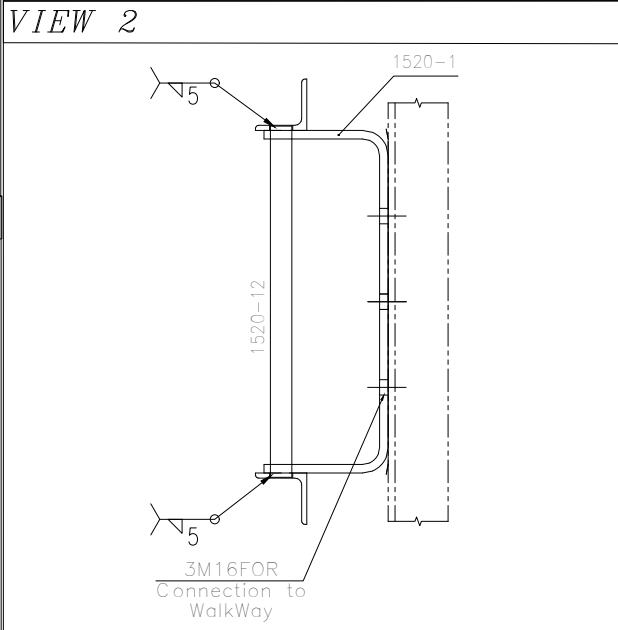
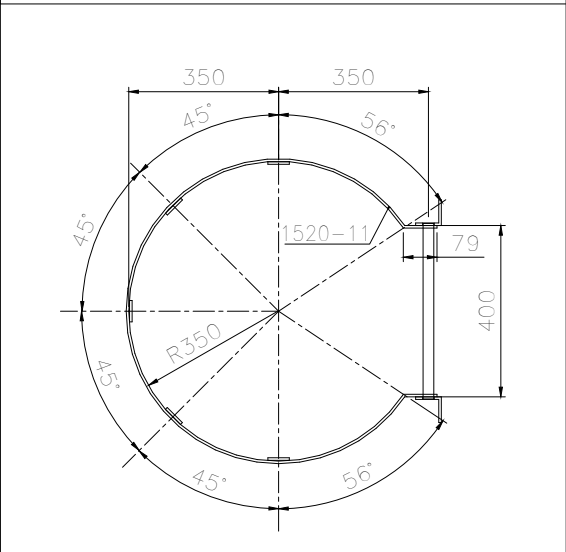
VIEW 1

DET 2

Approve as noted.

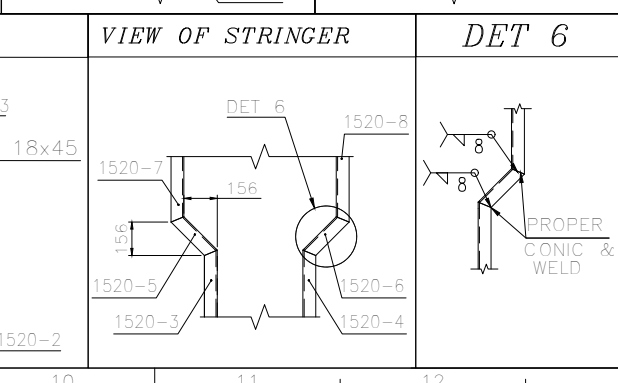
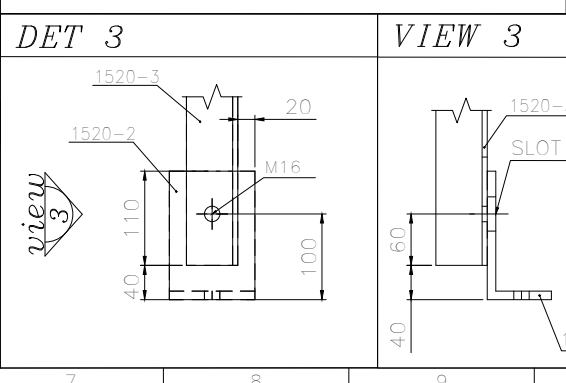
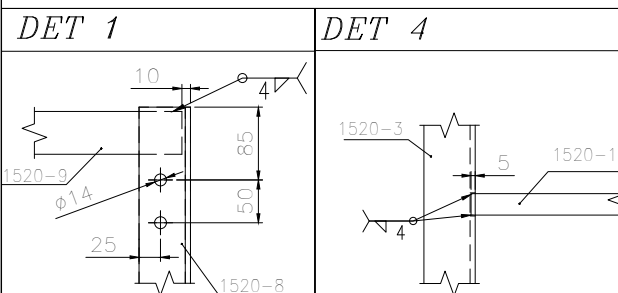
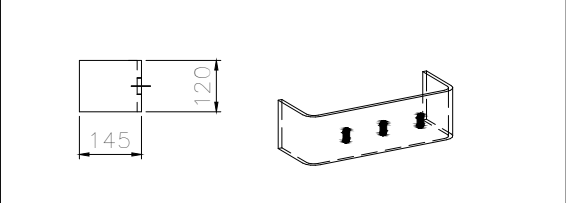
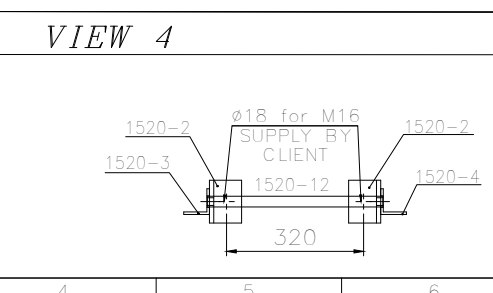
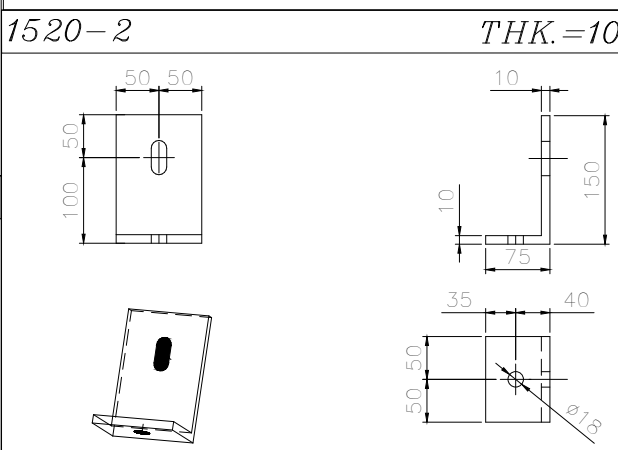
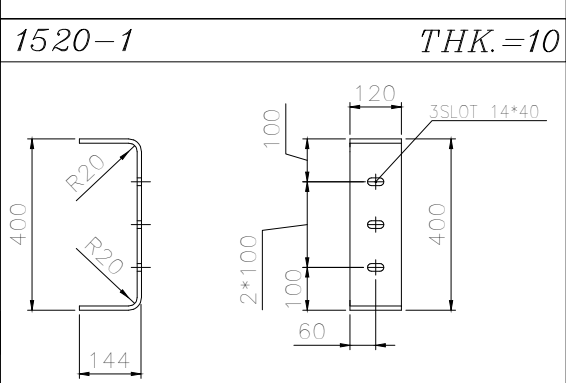
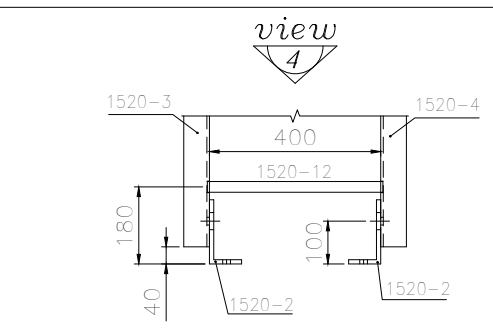
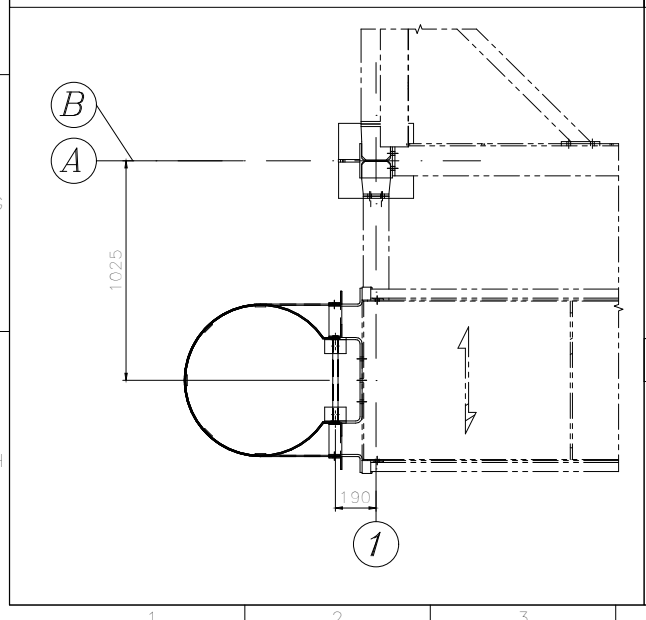


SEC A



TOP VIEW

DET 5



total ladder : 4
PART LIST For 1 ladder

| PART NO | DESCRIPTION | PROFILE | DIMENSION | | | | MATERIAL | QTY. | UNIT WEIGHT (kg) | TOTAL WEIGHT (kg) | REV. |
|------------------|---------------------|---------|-----------|--------------|------------|----------------|----------|------|------------------|-------------------|------|
| | | | DIA (mm) | LENGT H (mm) | WIDTH (mm) | THK (mm) | | | | | |
| 1520-1 | CONCTION TO WALKWAY | PLATE | 633 | 120 | 10 | ST-37(Painted) | 1 | 6.1 | 6.1 | | |
| 1520-2 | EARTH SUPPORT | PLATE | 215 | 100 | 10 | ST-37(Painted) | 2 | 1.7 | 3.4 | | |
| 1520-3 | STRINGER | PLATE | 4120 | - | - | ST-37(Painted) | 1 | 22.3 | 22.3 | | |
| 1520-4 | STRINGER | PLATE | 4120 | - | - | ST-37(Painted) | 1 | 22.3 | 22.3 | | |
| 1520-5 | STRINGER | PLATE | 245 | - | - | ST-37(Painted) | 1 | 1.3 | 1.3 | | |
| 1520-6 | STRINGER | PLATE | 245 | - | - | ST-37(Painted) | 1 | 1.3 | 1.3 | | |
| 1520-7 | STRINGER | PLATE | 969 | - | - | ST-37(Painted) | 1 | 5.3 | 5.3 | | |
| 1520-8 | STRINGER | PLATE | 969 | - | - | ST-37(Painted) | 1 | 5.3 | 5.3 | | |
| 1520-9 | TOP HOOP | PLATE | 1849 | 50 | 6 | ST-37(Painted) | 2 | 4.4 | 8.8 | | |
| 1520-10 | VERTICAL BAR | PLATE | 3045 | 50 | 6 | ST-37(Painted) | 5 | 7.2 | 36 | | |
| 1520-11 | BOT HOOP | PLATE | 1939 | 50 | 6 | ST-37(Painted) | 3 | 4.6 | 13.8 | | |
| 1520-12 | RUNG | ROD25 | 25 | 410 | - | ST-37(Painted) | 16 | 1.5 | 24 | | |
| Total weight(kg) | | | | | | | | | 149.9 | | |

LIST of bolts & nuts 2 washer For 1 ladder

| DESCRIPTION | PROFILE | DIMENSION | | | | MATERIAL | QTY. | UNIT WEIGHT (kg) | TOTAL WEIGHT (kg) | REV. |
|-------------|---------------------------------|-----------|--------------|------------|----------|---------------------|------|------------------|-------------------|------|
| | | DIA (mm) | LENGT H (mm) | WIDTH (mm) | THK (mm) | | | | | |
| 1590-1 | - | M12 | 40 | - | - | DN:93-4.8 (Chromet) | 4 | - | - | |
| 1590-2 | for HANDRAIL CONNECTION | M12 | - | - | - | DN:93-4.8 (Chromet) | 4 | - | - | |
| 1590-3 | - | A13 | - | - | - | DN:125AST(Chromet) | 8 | - | - | |
| 1590-4 | for WALKWAY FRAME CONNECTION | M16 | 45 | - | - | DN:93-4.8 (Chromet) | 3 | - | - | |
| 1590-5 | for WALKWAY FRAME CONNECTION | M16 | - | - | - | DN:93-4.8 (Chromet) | 3 | - | - | |
| 1590-6 | - | A17 | - | - | - | DN:125AST(Chromet) | 6 | - | - | |
| 1590-7 | - | M16 | 45 | - | - | DN:93-4.8 (Chromet) | 2 | - | - | |
| 1590-8 | for CONNECTION to EARTH SUPPORT | M16 | - | - | - | DN:93-4.8 (Chromet) | 2 | - | - | |
| 1590-9 | - | A17 | - | - | - | DN:125AST(Chromet) | 4 | - | - | |

To be checked.

NOTES:
 1- ALL DIMENSIONS ARE IN MILLIMETER .
 2- ALL PARTS SHALL PAINTED ACCORDING TO EI027-DMF-VD-QC-PRO-024
 3- BOLTS & NUTS & WASHERS SHALL BE HOT DIP GALVANIZED IN ACCORDANCE WITH ASTM - A153 OR EN ISO 1461
 4- WELD: CONTINUOUS WELD.
 MIN. HEIGHT OF FILLET WELD = 0.7 x MIN. THK.
 < MAX. THK. , IF MAX.THK.< 7mm
 < MAX.THK.1.5 , IF MAX.THK.> 7mm

| TOLERANCES | | | | |
|--|-----|-----|------|------|
| THE FOLLOWING VALUES ARE APPLICABLE TO THE DIMENSIONS THAT ARE NOT PROVIDED WITH TOLERANCES ON DRAWING | | | | |
| NOMINAL DIMENSIONS PER MILLIMETER STEPS | 0 | 201 | 801 | 2001 |
| | 200 | 800 | 2000 | 5000 |
| TOLERANCES | ± | 2 | 3 | 5 |
| | | 6 | 7 | |
| TOLERANCE ON CENTER DISTANCES ± 1.5 | | | | |
| THE TOLERANCES SHOWN HERE ARE NOT CUMULATIVE | | | | |

| | | |
|-----------------------------|------------------|-------------------------|
| General Arrangement Drawing | 1158-A01-1000-00 | EI027-DMF-VD-ME-DWG-003 |
| Steel Structure Drawing | 1158-A01-1100-00 | EI027-DMF-VD-ST-DWG-013 |
| Header Walkway Drawing | 1158-A01-1210-00 | EI027-DMF-VD-ST-DWG-014 |

| | | | | | | |
|-----|------------|---------------------|----------|------------|-------------|-------------------|
| RD | 10/06/2024 | ISSUED FOR APPROVAL | J.M. | J.B.L. | J.R.L. | AGHZ |
| REV | DATE | DESCRIPTION | DRAWN BY | CHECKED BY | APPROVED BY | FINAL APPROVED BY |

CLIENT: **ENBR TEKNOLOJI**

CONTRACTOR: **dt Damafin thermal technology**
 Factory : Km 14 special Karaj road

PROJECT : AIR COOLER FOR Toase-ehe Park Sanati Gohar Ofogh Petrochemical Co.
 Ladder Drawing
 1158-A01-1520-00

DWG. NO. EI027-DMF-VD-ST-DWG-015
 SCALE : NTS SIZE : A3 REV : R0

THIS DOCUMENT OF A CONFIDENTIAL NATURE IS THE PROPERTY OF DAMAFIN AND SHALL NOT BE REPRODUCED IN ANY MANNER, NOR USED FOR ANY PURPOSE WHAT SO EVER, EXCEPT BY WRITTEN PERMISSION OF DAMAFIN.