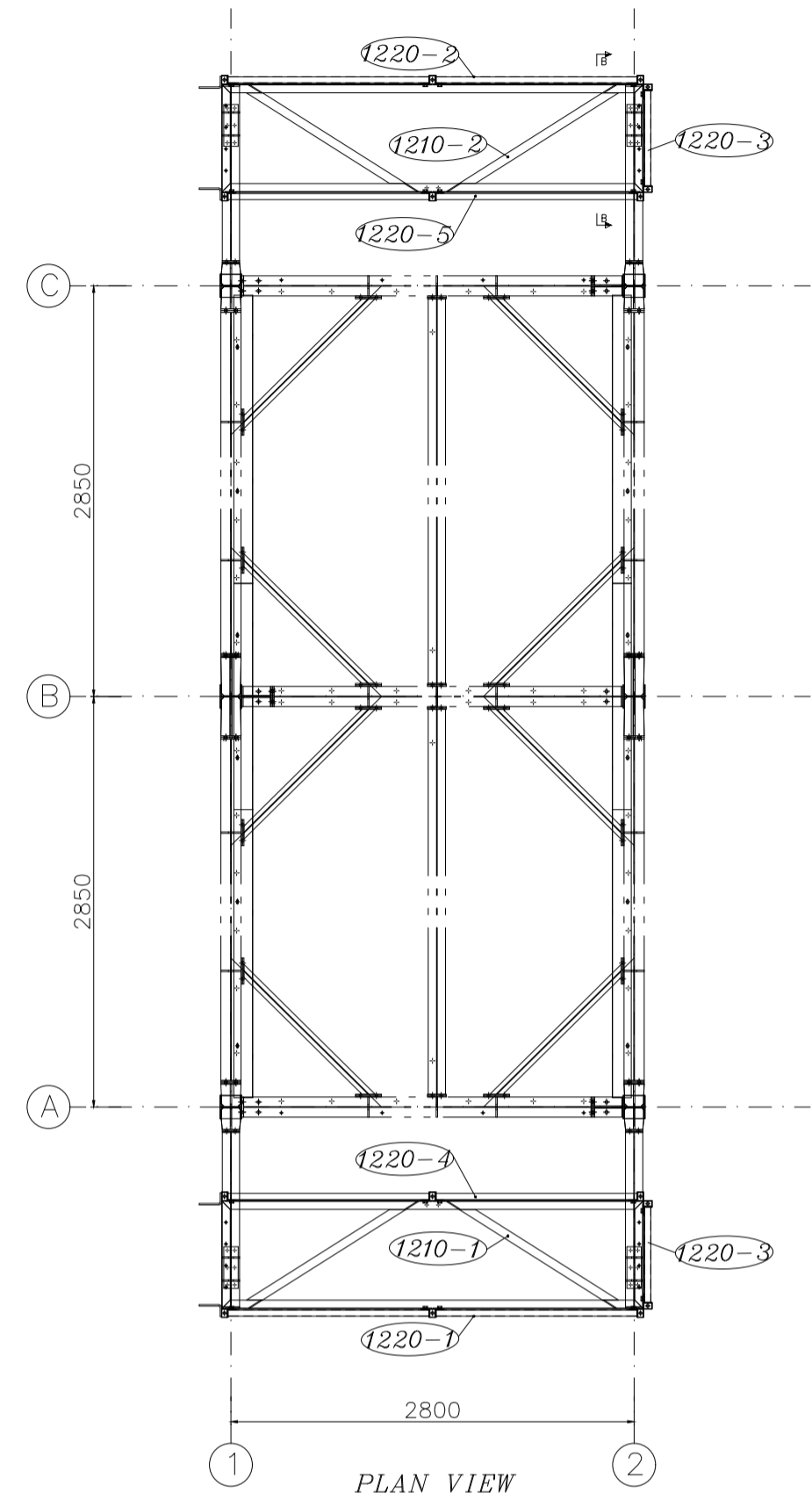
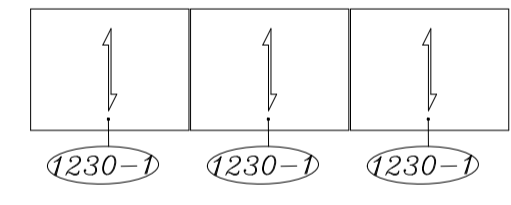


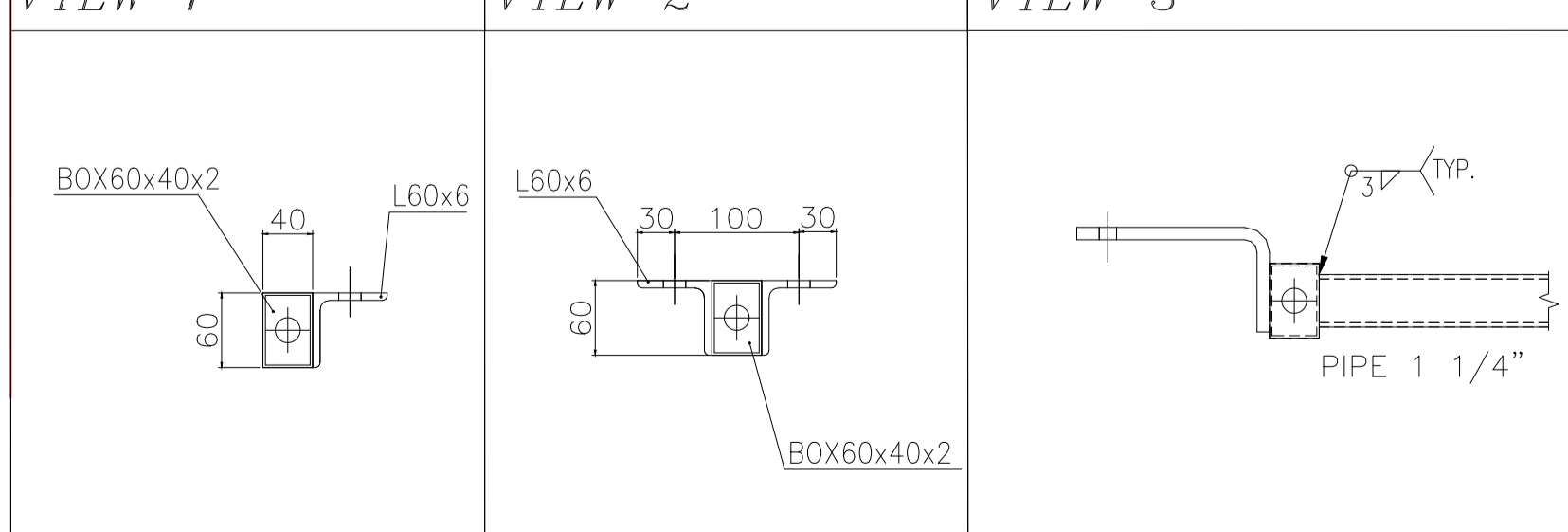
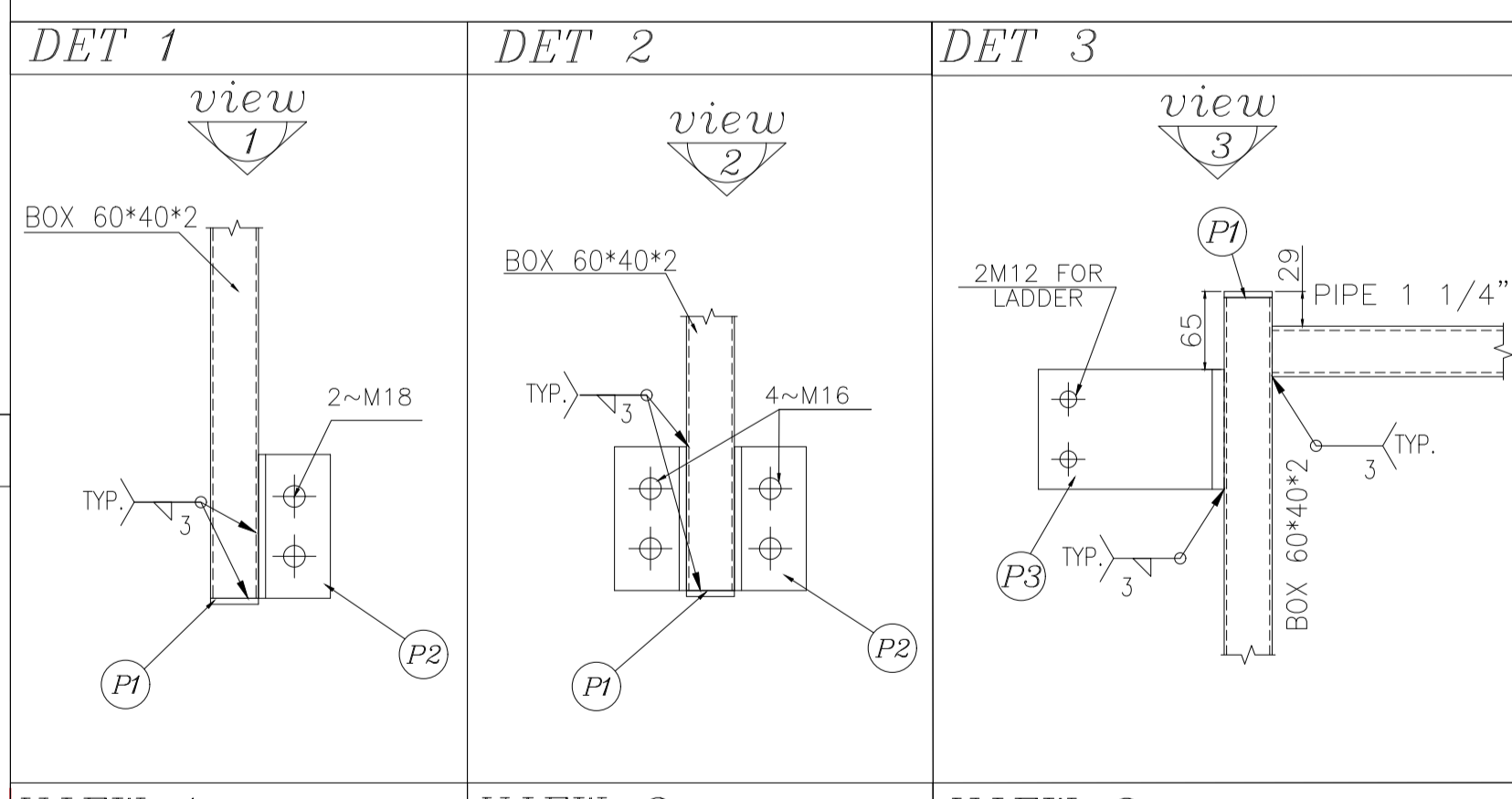
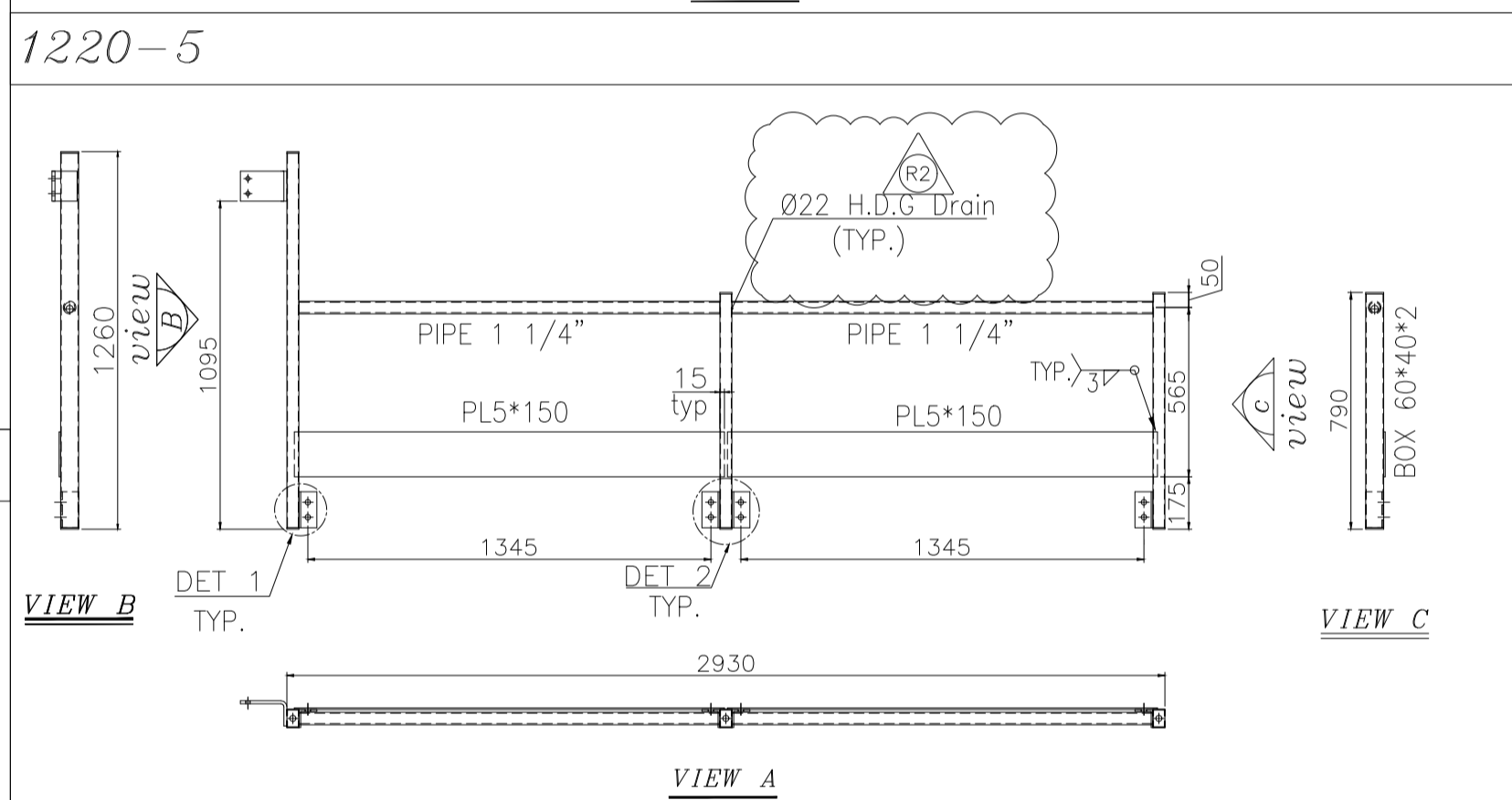
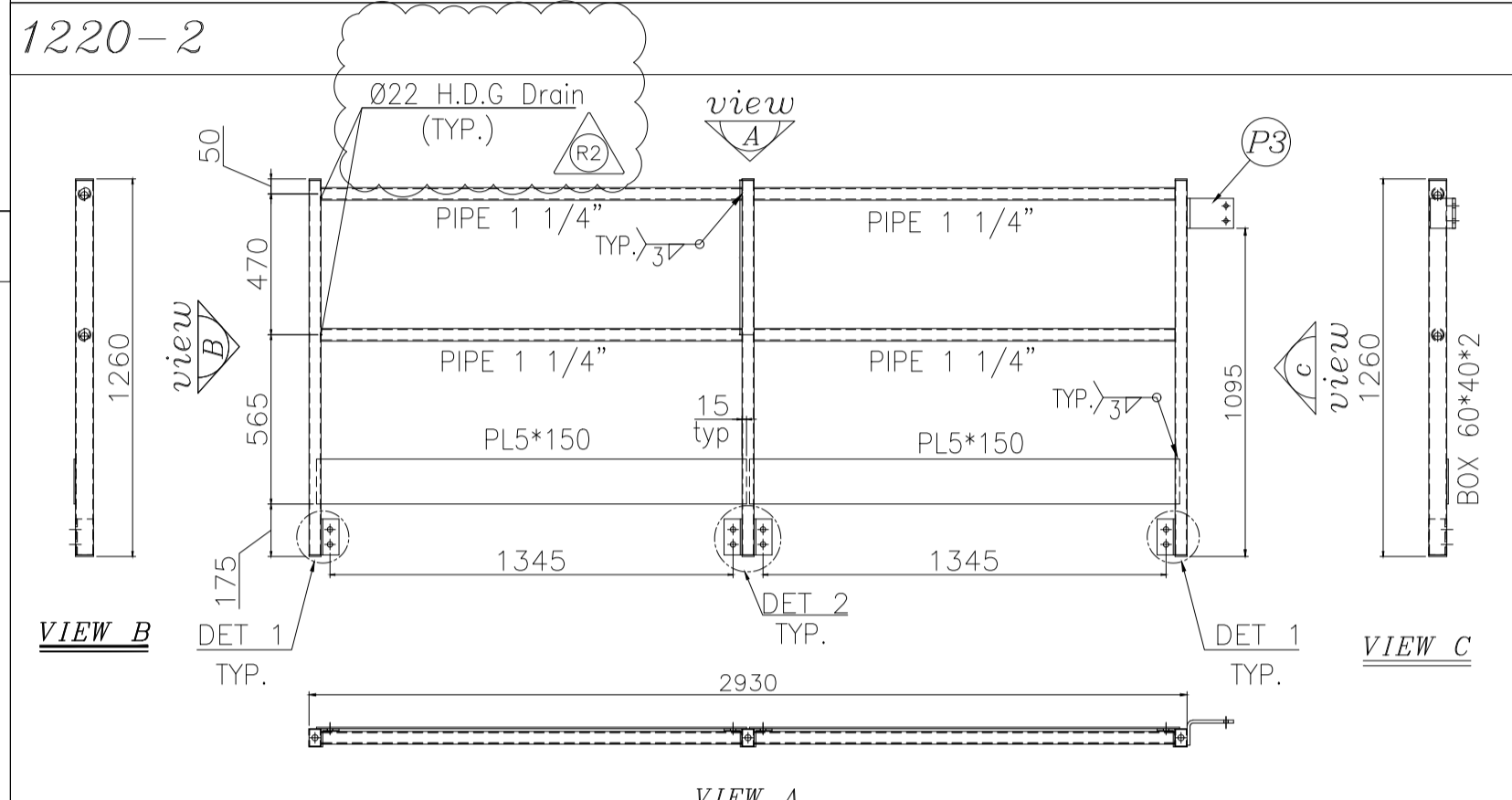
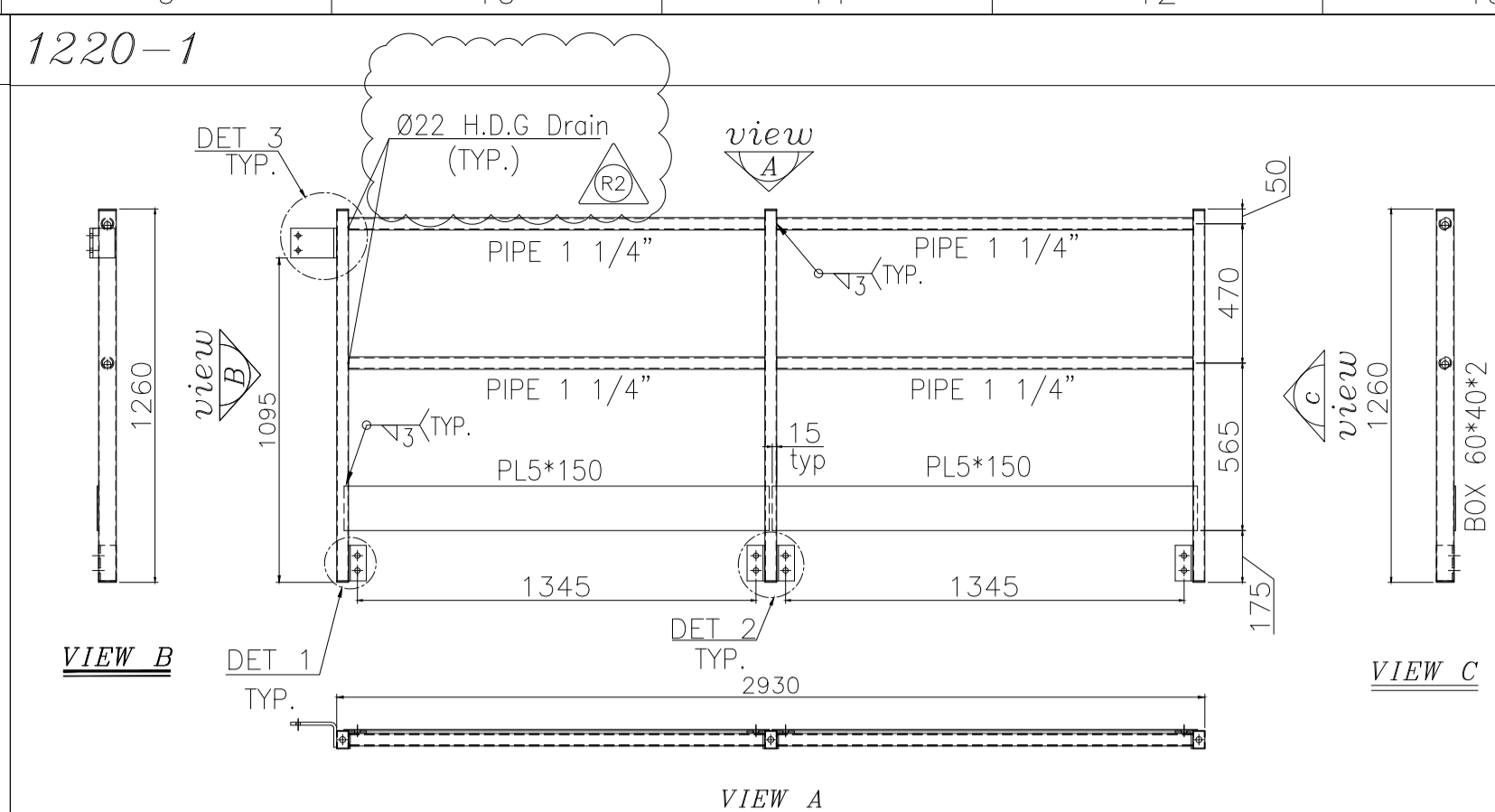
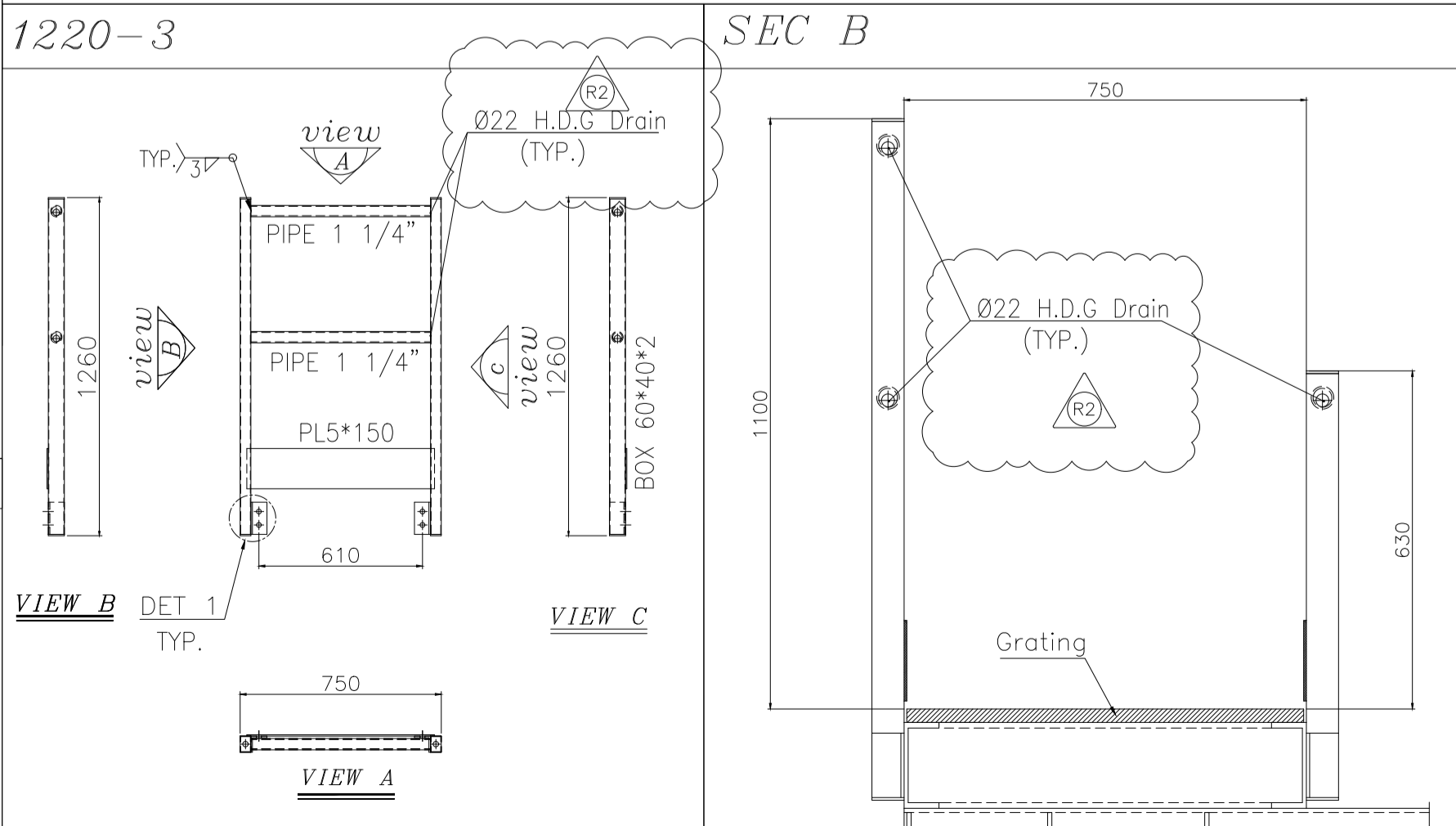
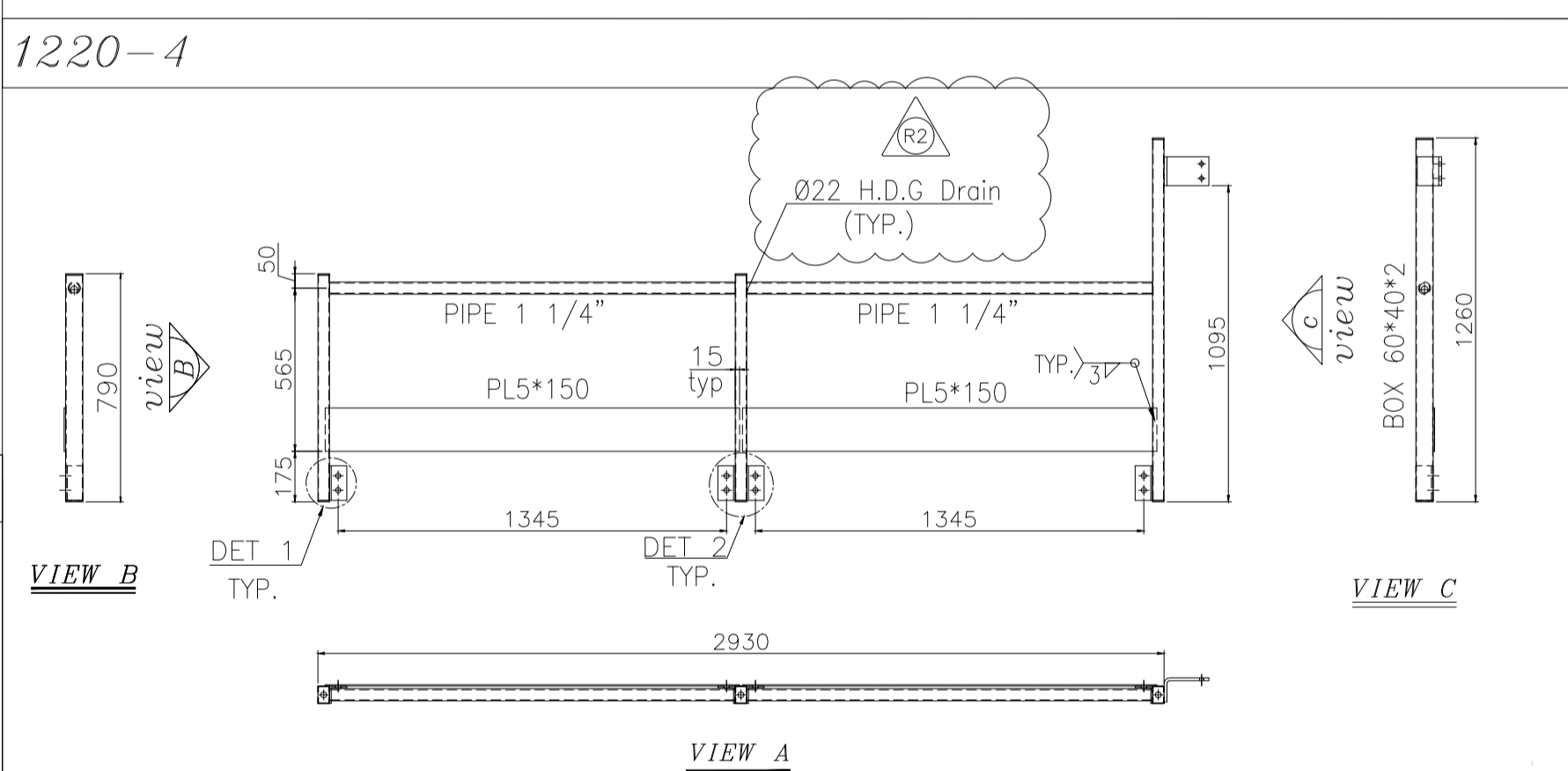
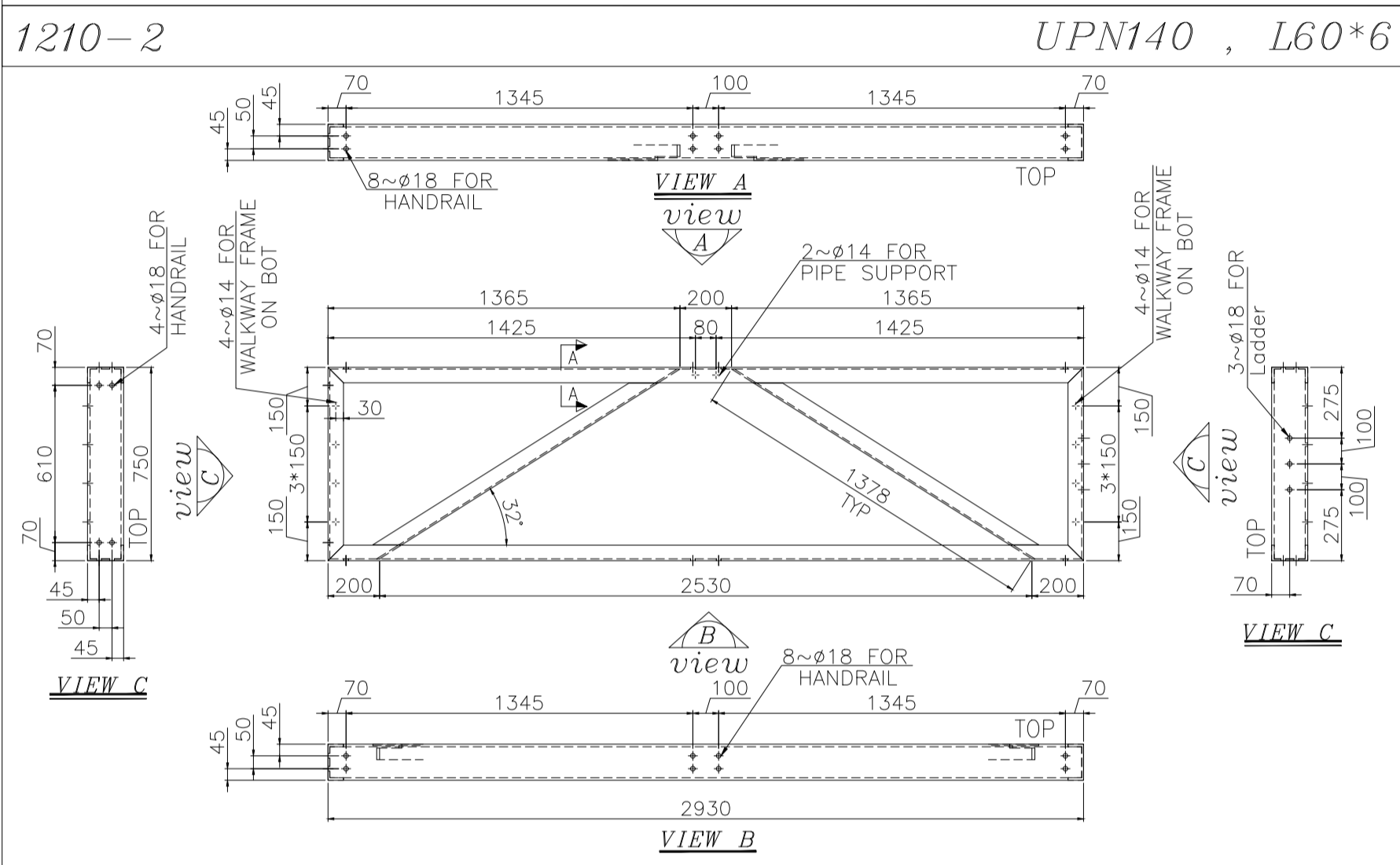
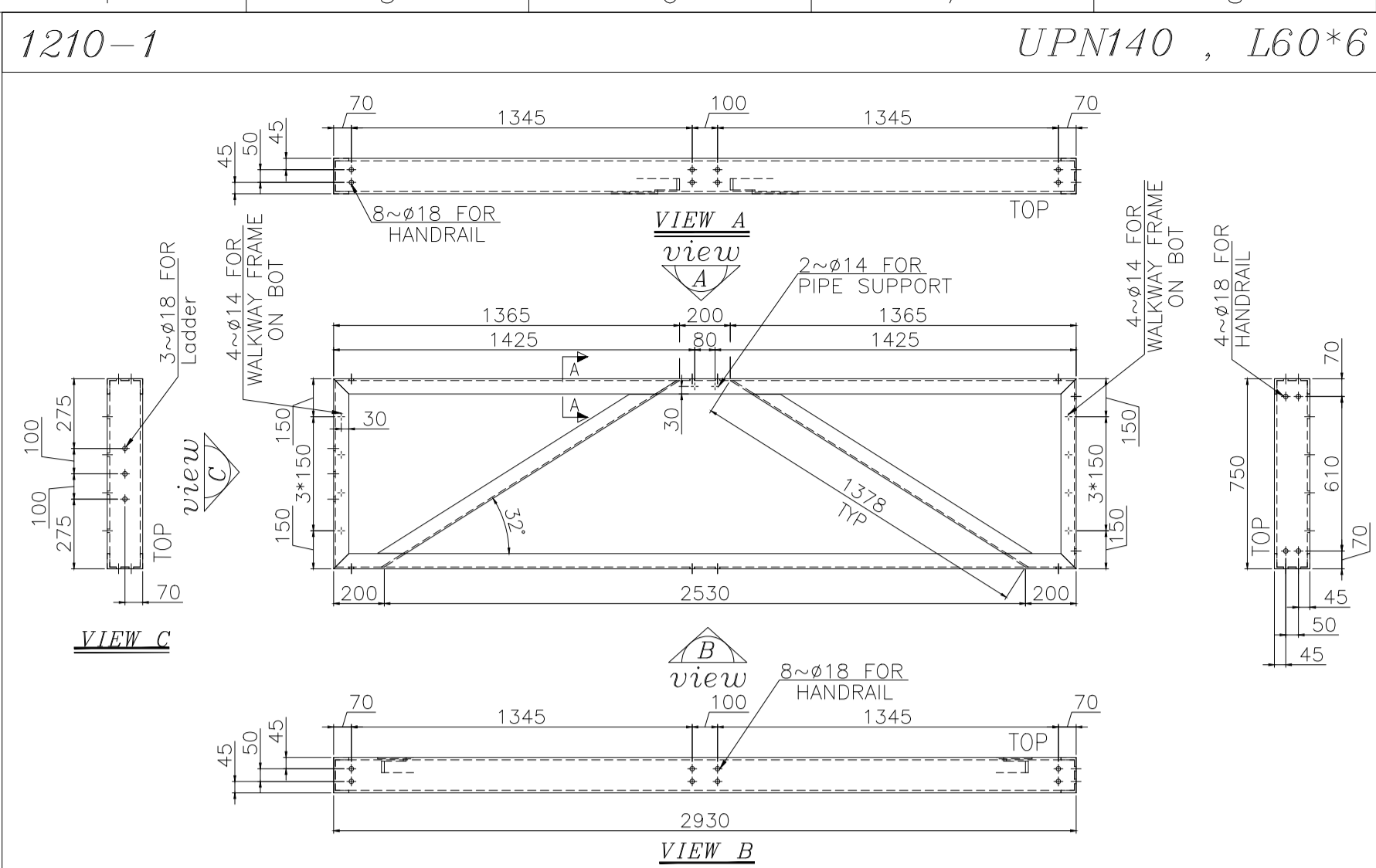
Grating Arrangement



PLAN VIEW

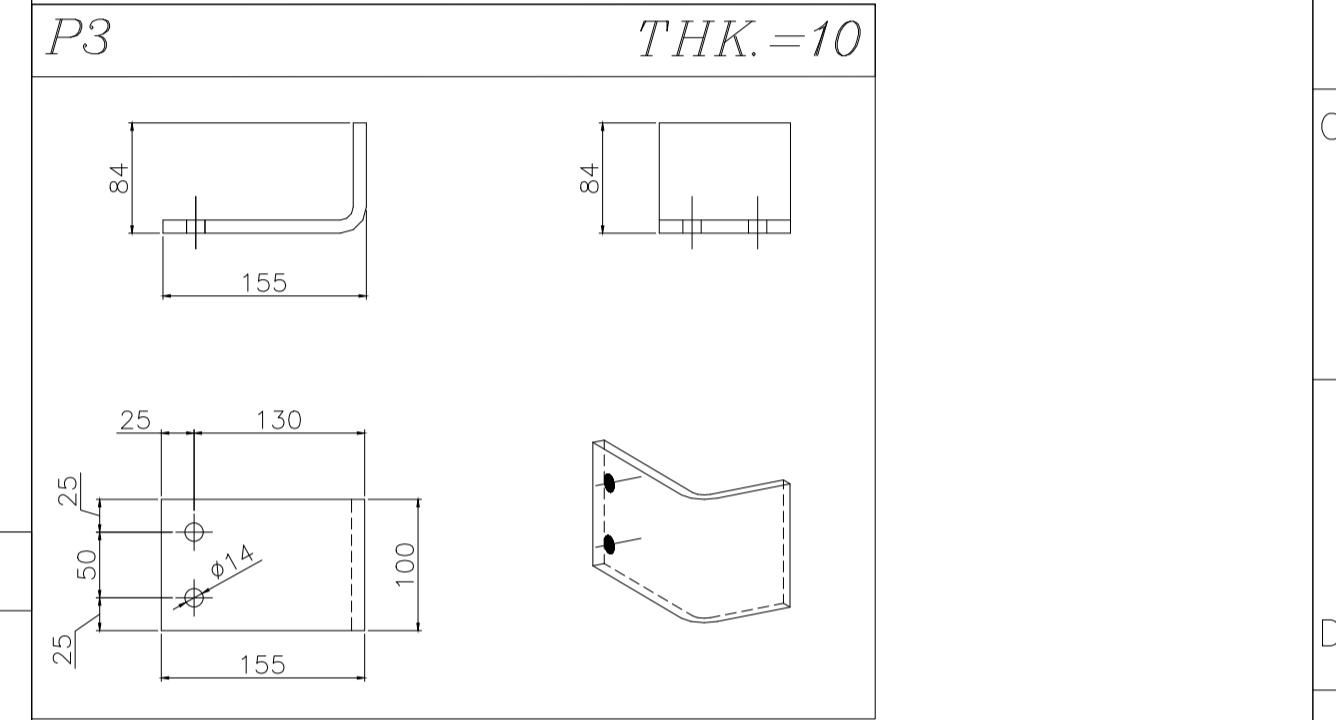


Grating Arrangement



| TOTAL UNITS=2 | | | | | | | | | | | |
|----------------------|---------------------|------------------------------------|-----------|-------------|------------|----------|---------------|------|------------------|-------------------|------|
| PART LIST FOR 1 UNIT | | | | | | | | | | | |
| DU Assembly No | DESCRIPTION | PROFILE | DIMENSION | | | | MATERIAL | QTY. | UNIT WEIGHT (kg) | TOTAL WEIGHT (kg) | REV. |
| | | | DIA (mm) | LENGTH (mm) | WIDTH (mm) | THK (mm) | | | | | |
| 1210-1 | WALKWAY FRAME ASS. | UPN140 L60*6 | - | 2930 | 750 | - | ST-370(L.D.G) | 1 | 132.9 | 132.9 | R2 |
| 1220-2 | WALKWAY FRAME ASS. | UPN140 L60*6 | - | 2930 | 750 | - | ST-370(L.D.G) | 1 | 132.9 | 132.9 | R2 |
| 1220-1 | HIGH HANDRAIL ASS. | BOX60*40*2 PIPE 1 1/4" PLATE 5*150 | - | 2930 | 1260 | - | ST-370(L.D.G) | 1 | 53.9 | 53.9 | R2 |
| 1220-2 | HIGH HANDRAIL ASS. | BOX60*40*2 PIPE 1 1/4" PLATE 5*150 | - | 2930 | 1260 | - | ST-370(L.D.G) | 1 | 53.9 | 53.9 | R2 |
| 1220-3 | SHORT HANDRAIL ASS. | BOX60*40*2 PIPE 1 1/4" PLATE 5*150 | - | 750 | 1260 | - | ST-370(L.D.G) | 2 | 19.4 | 38.8 | R2 |
| 1220-4 | SHORT HANDRAIL ASS. | BOX60*40*2 PIPE 1 1/4" PLATE 5*150 | - | 2930 | 790 | - | ST-370(L.D.G) | 1 | 41.3 | 41.3 | R2 |
| 1220-5 | HIGH HANDRAIL ASS. | BOX60*40*2 PIPE 1 1/4" PLATE 5*150 | - | 2930 | 790 | - | ST-370(L.D.G) | 1 | 41.3 | 41.3 | R2 |
| 1230-1 | GRATING | - | - | 965(B) | 740(A) | 25 | ST-370(L.D.G) | 6 | 31 | 186 | R2 |
| 1260-1 | GRATING CLAMP | - | - | - | - | - | ST-370(L.D.G) | 24 | - | - | R2 |
| | | | | | | | | | 681 | | |

| LIST OF BOLTS & NUTS & WASHERS for 1 Unit | | | | | | | | | | | |
|---|--------------------------------|---------|-----------|-------------|------------|----------|-----------------------|------|------------------|-------------------|------|
| PART NO. | DESCRIPTION | PROFILE | DIMENSION | | | | MATERIAL | QTY. | UNIT WEIGHT (kg) | TOTAL WEIGHT (kg) | REV. |
| | | | DIA (mm) | LENGTH (mm) | WIDTH (mm) | THK (mm) | | | | | |
| 1290-1 | for WALKWAY FRAME TO STRUCTURE | - | M12 | 40 | - | - | DIN933-8.8(DacrometL) | 16 | - | - | |
| 1290-2 | for HANDRAIL ASS | - | M12 | 40 | - | - | DIN933-8.8(DacrometL) | 32 | - | - | |
| 1290-3 | for HANDRAIL ASS | - | M16 | 40 | - | - | DIN933-8.8(DacrometL) | 40 | - | - | |
| 1290-4 | for HANDRAIL ASS | - | M16 | 40 | - | - | DIN933-8.8(DacrometL) | 40 | - | - | |
| 1290-5 | for HANDRAIL ASS | - | M16 | 40 | - | - | DIN933-8.8(DacrometL) | 40 | - | - | |
| 1290-6 | for HANDRAIL ASS | - | A17 | - | - | - | DIN125A-ST(DacrometL) | 80 | - | - | |
| 1290-7 | for HANDRAIL ASS | - | M6 | 50 | - | - | DIN933-8.8(DacrometL) | 24 | - | - | |
| 1290-8 | for GRATING CLAMP | - | M6 | - | - | - | DIN934-8.0(DacrometL) | 24 | - | - | |
| 1290-9 | for GRATING CLAMP | - | A7 | - | - | - | DIN125A-ST(DacrometL) | 48 | - | - | |

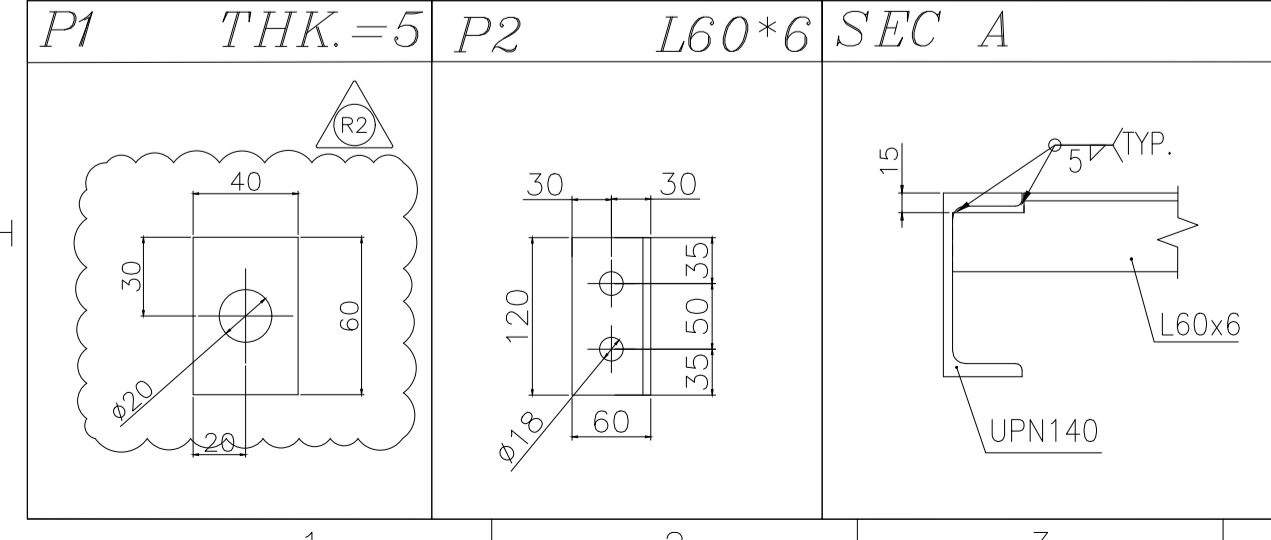


NOTES:
 1- ALL DIMENSIONS ARE IN MILLIMETER.
 2- ALL PARTS SHALL PAINTED ACCORDING TO E1027-DMF-VD-QC-PRO-024
 3- BOLTS & NUTS & WASHERS SHALL BE DACROMET IN ACCORDANCE WITH ASTM - A153 OR EN ISO 1461
 4- WELD: CONTINUOUS WELD.
 MIN. HEIGHT OF FILLET WELD = 0.7 x MIN. THK.
 < MAX. THK. < 7mm
 < MAX. THK. > 7mm

| TOLERANCES | | | | |
|--|-------|-------|-------|-------|
| THE FOLLOWING VALUES ARE APPLICABLE TO THE DIMENSIONS THAT ARE NOT PROVIDED WITH TOLERANCES ON DRAWING | | | | |
| NOMINAL DIMENSIONS PER MILLIMETER STEPS | 0 | 201 | 801 | 2001 |
| TOLERANCES | + 0.2 | + 0.3 | + 0.5 | + 0.7 |
| TOLERANCE ON CENTER DISTANCES 1.5 | | | | |
| THE TOLERANCES SHOWN HERE ARE NOT CUMULATIVE | | | | |

| | | |
|-----------------------------|------------------|-------------------------|
| General Arrangement Drawing | 1158-A01-1000-00 | E1027-DMF-VD-ME-DWG-003 |
| Steel Structure Drawing | 1158-A01-1100-00 | E1027-DMF-VD-ST-DWG-013 |
| Ladder Drawing | 1158-A01-1520-00 | E1027-DMF-VD-ST-DWG-015 |

| GRATING DESCRIPTION | GRATING CLAMP |
|---------------------|---------------|
| | |
| A SEE PART LIST | |
| B SEE PART LIST | |
| G 25 mm | |
| E 5 mm | |
| C 30 mm | |
| D 50 mm | |



| | | | | | | |
|-----|------------|---------------------|---|--------|--------|------|
| R2 | 12/28/2024 | ISSUED FOR APPROVAL | J.M. | J.B.L. | J.B.L. | AGHZ |
| RI | 11/13/2024 | ISSUED FOR APPROVAL | J.M. | J.B.L. | J.B.L. | AGHZ |
| R0 | 10/05/2024 | ISSUED FOR APPROVAL | J.M. | J.B.L. | J.B.L. | AGHZ |
| REV | DATE | DESCRIPTION | DRAWN BY / CHECKED BY / APPROVED BY / FINAL APPROVED BY | | | |

CLIENT:

CONTRACTOR:

ENBR TEKNOLOJİ

PROJECT:
 AIR COOLER FOR
 Toase-the Park Sanati Gohar Ofogh Petrochemical Co.
 Header Walkway Drawing
 1158-A01-1210-00

dttdamafin thermal technology
 Factory : Km 14 special Karaj road

DWG. NO. E1027-DMF-VD-ST-DWG-014
SCALE: NTS **SIZE:** A1 **REV.:** R2

THIS DOCUMENT OF A CONFIDENTIAL NATURE IS THE PROPERTY OF DAMAFIN AND SHALL NOT BE REPRODUCED IN ANY MANNER, NOR USED FOR ANY PURPOSE WHAT SO EVER, EXCEPT BY WRITTEN PERMISSION OF DAMAFIN.