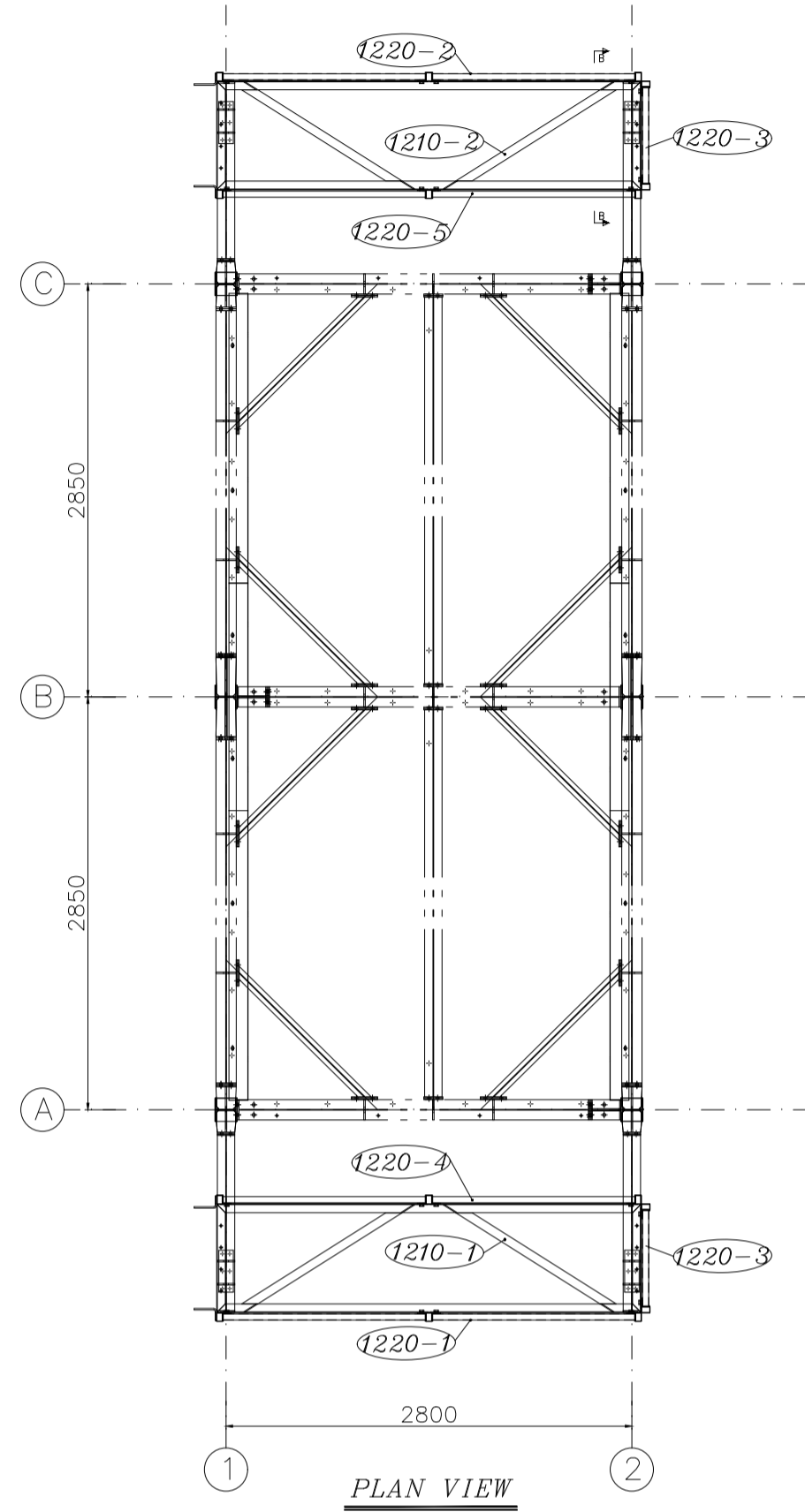
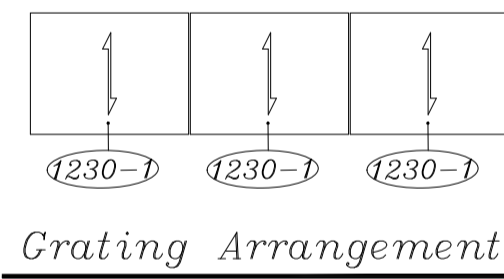


Grating Arrangement

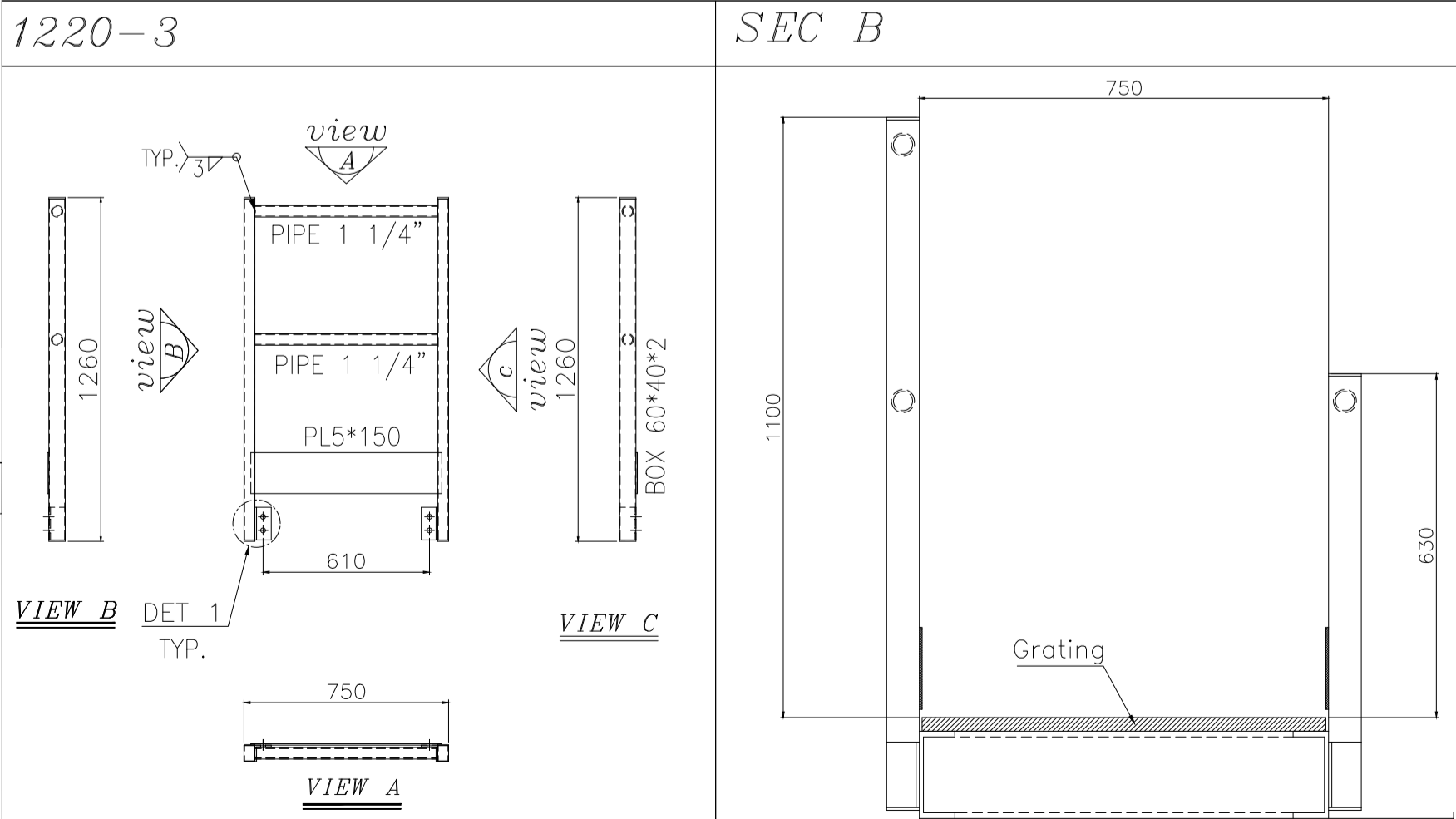
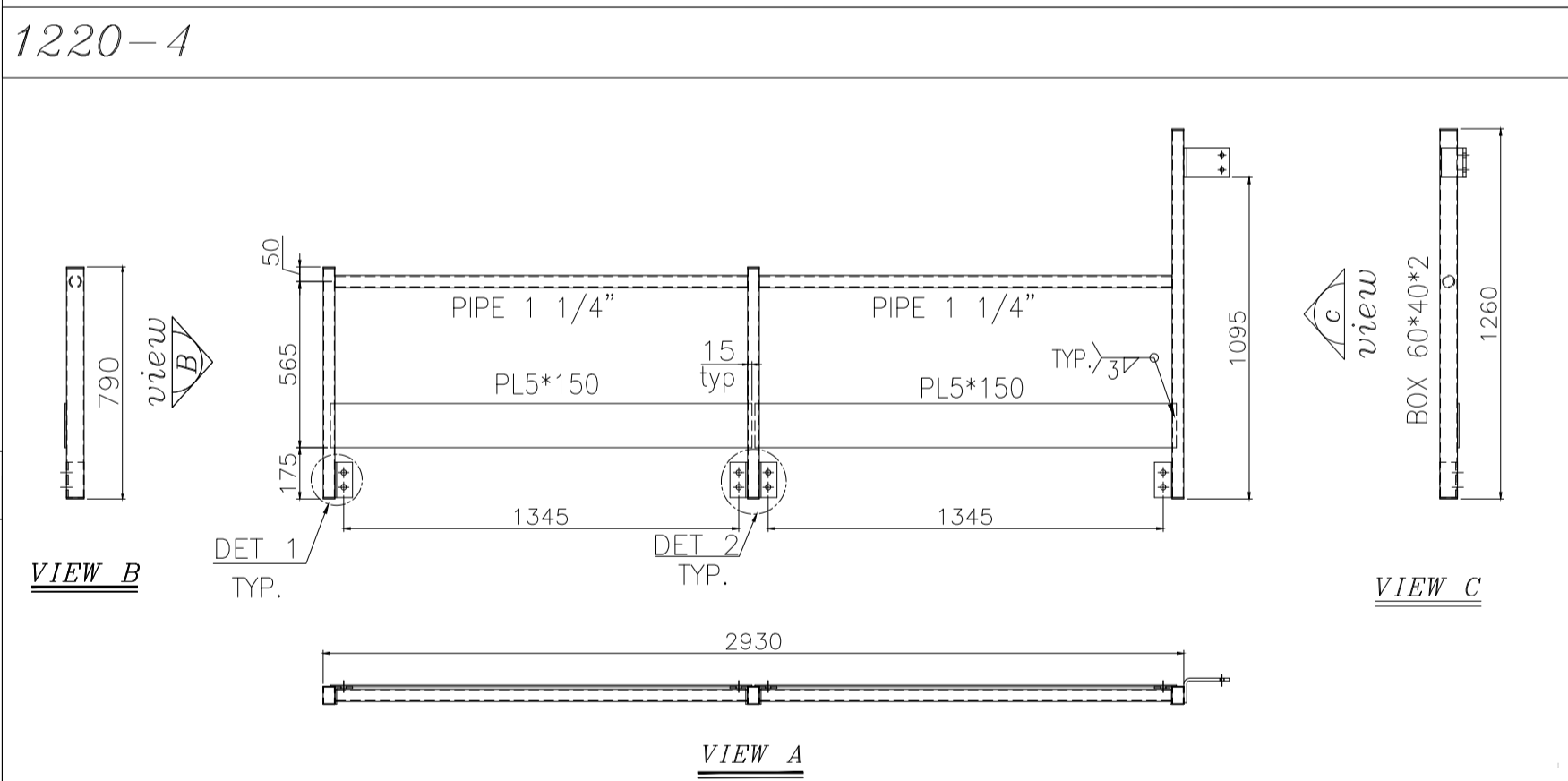
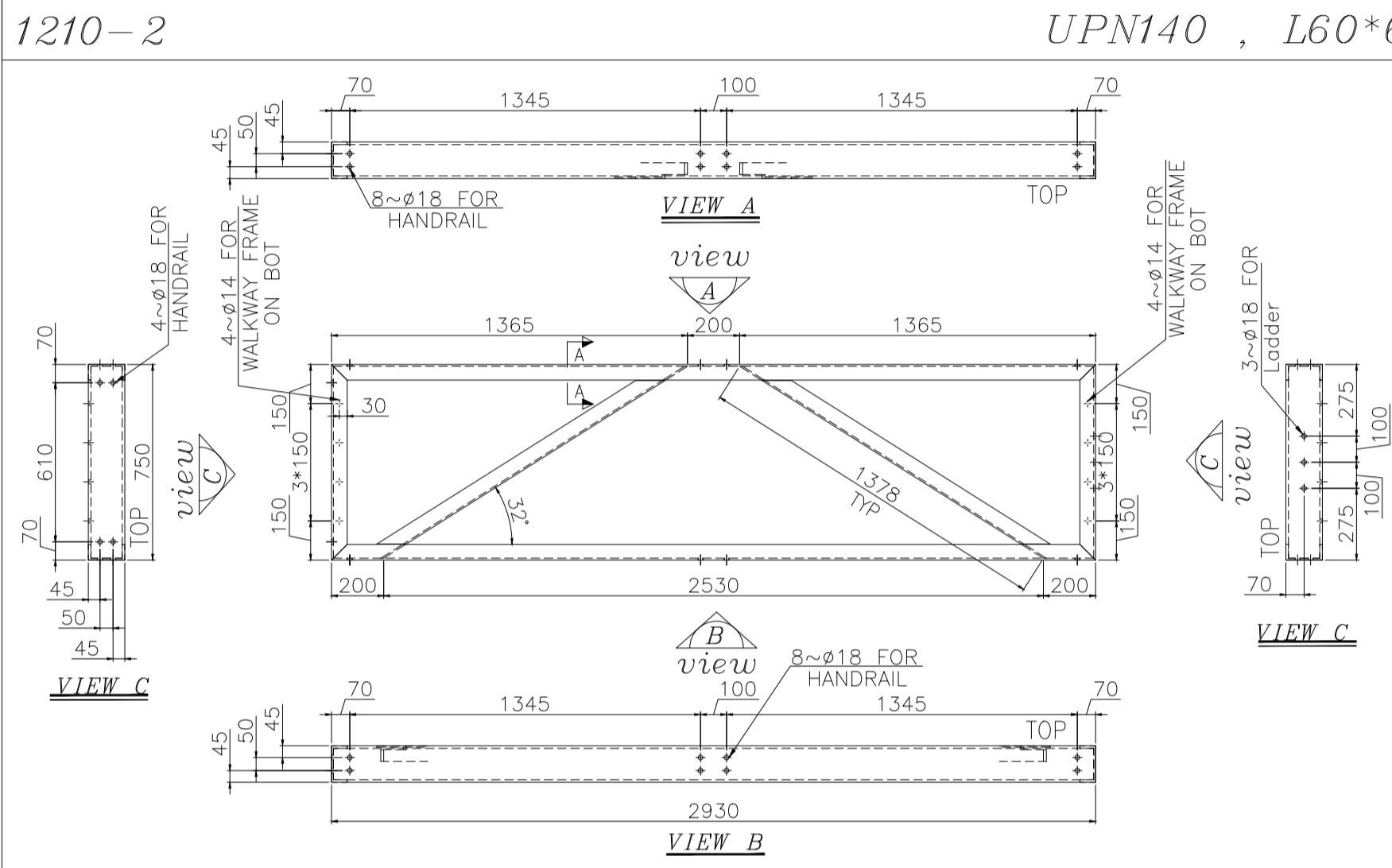
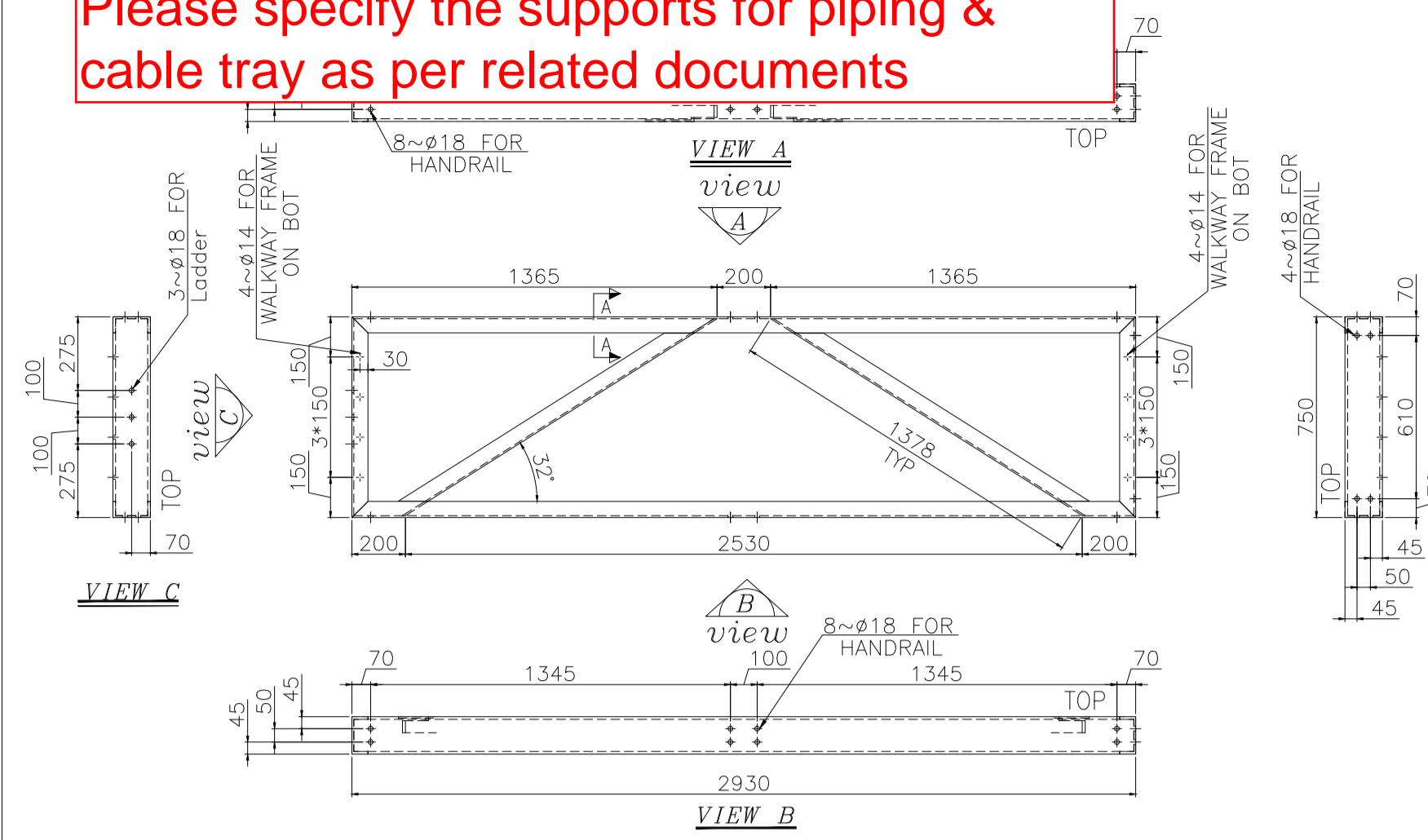


PLAN VIEW



Grating Arrangement

1210-1 Please specify the supports for piping & cable tray as per related documents

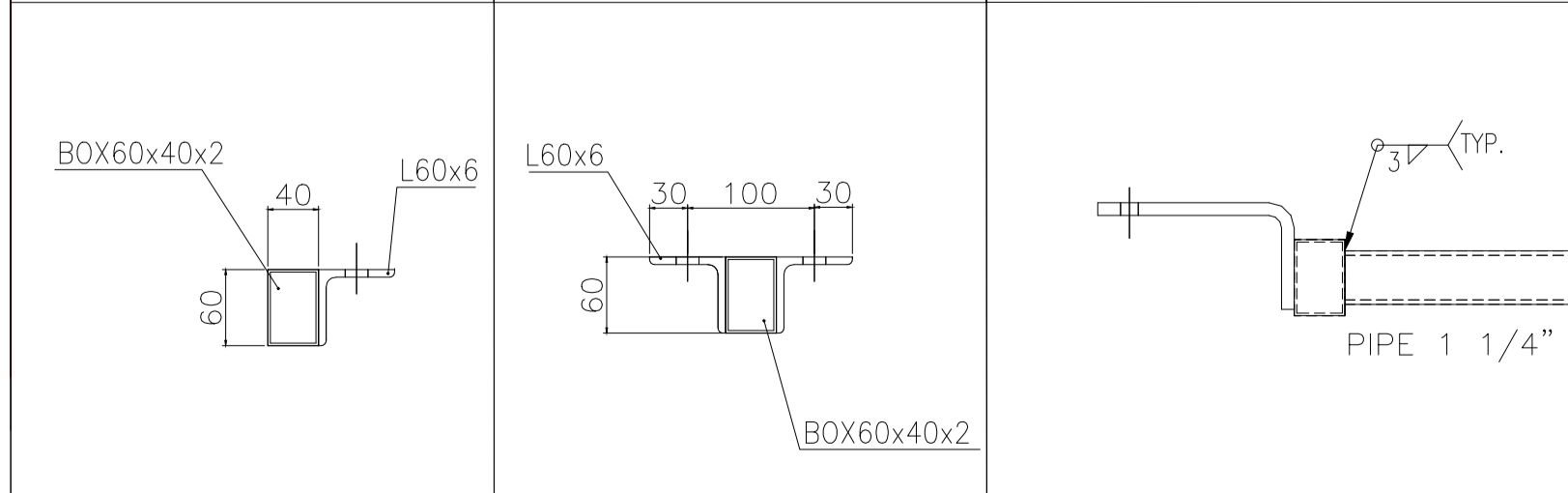
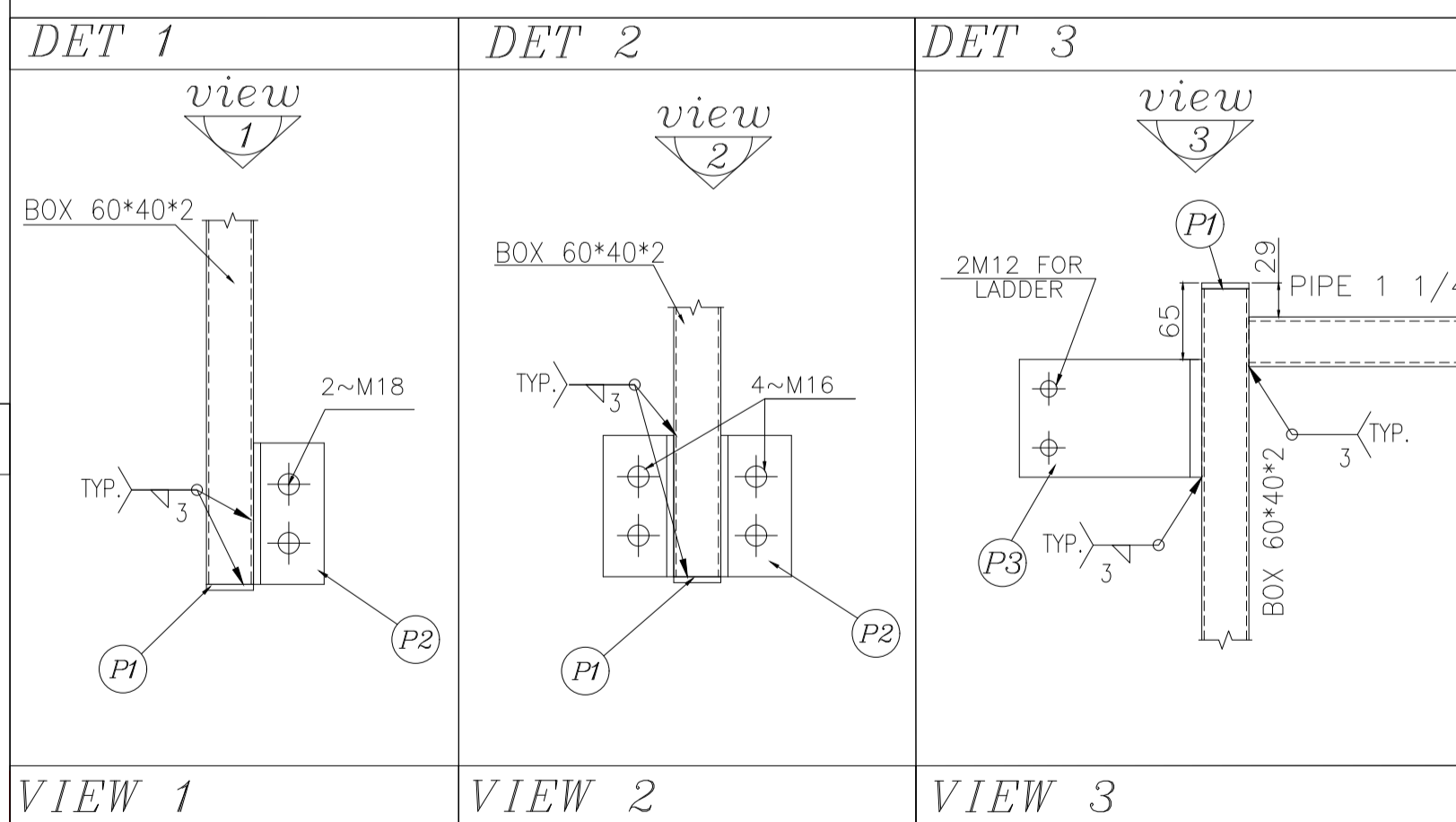
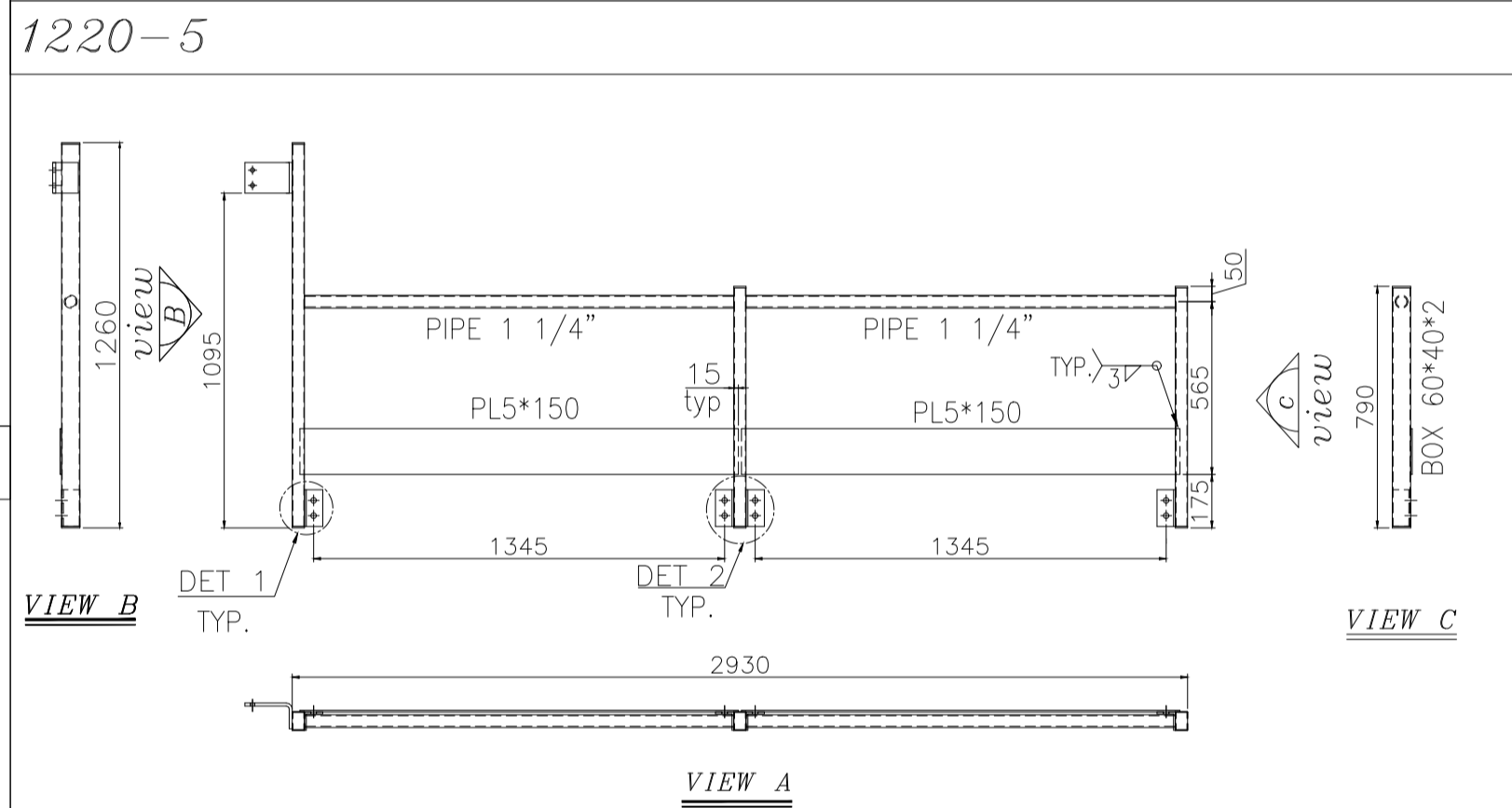
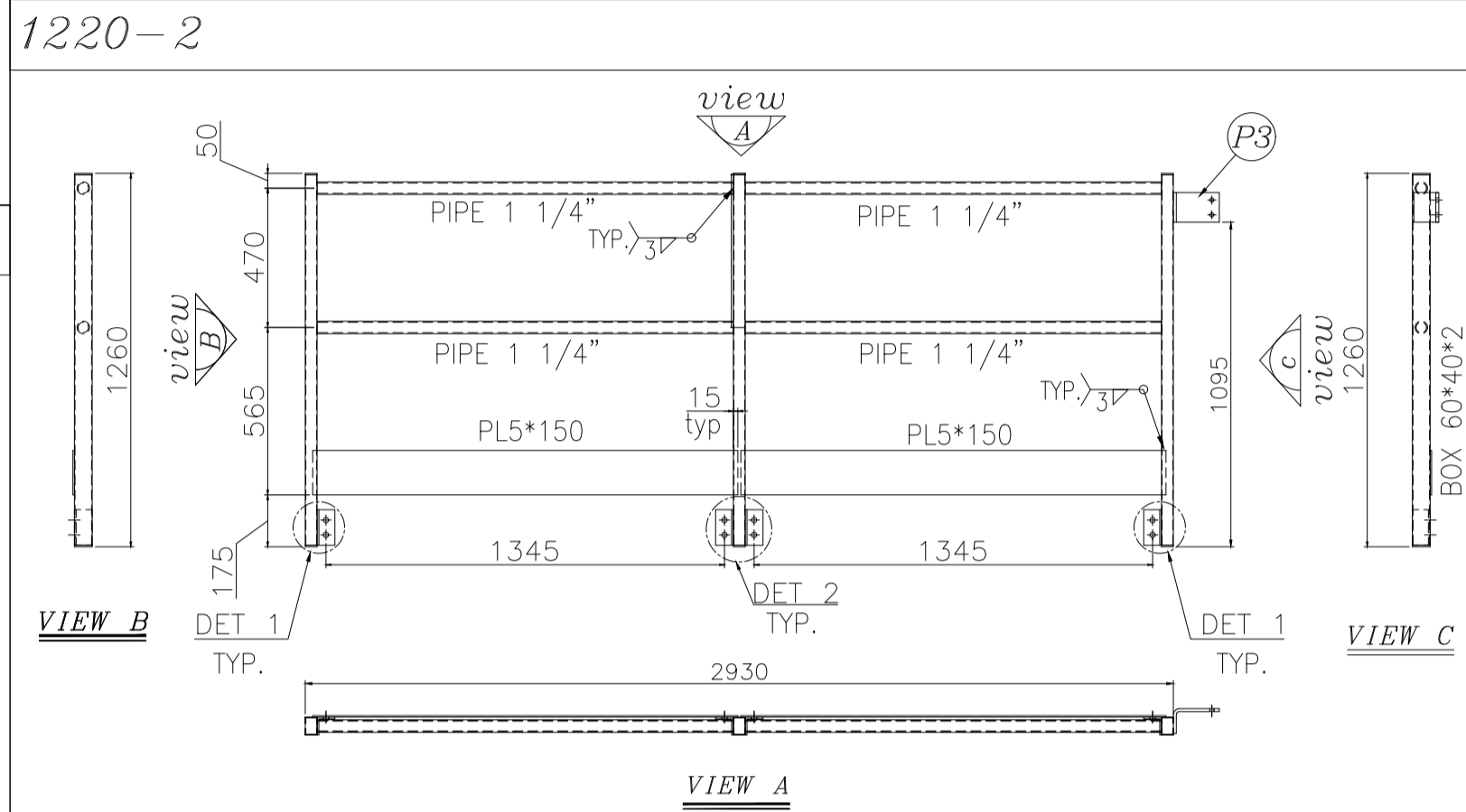
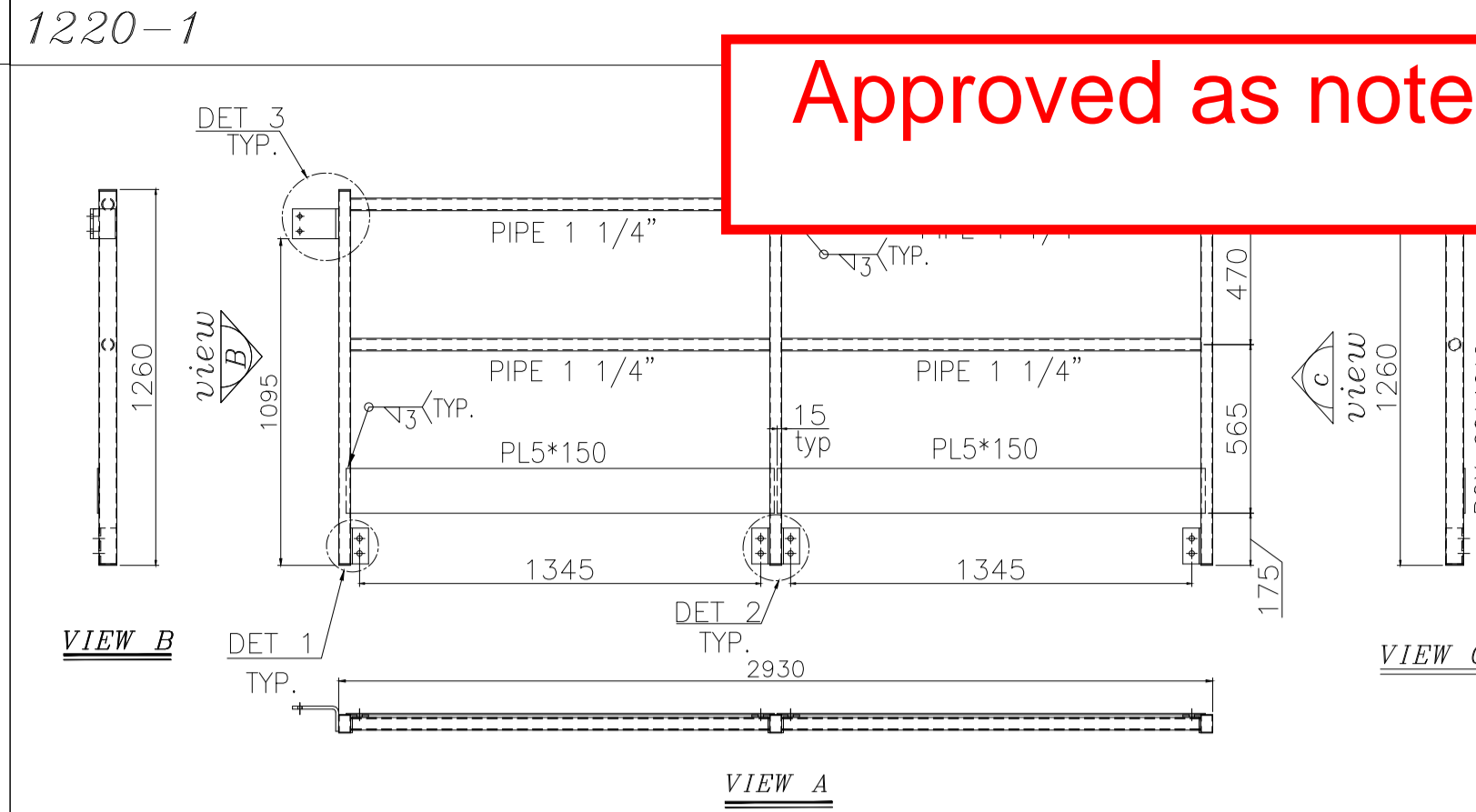


UPN140 , L60*6

UPN140 , L60*6

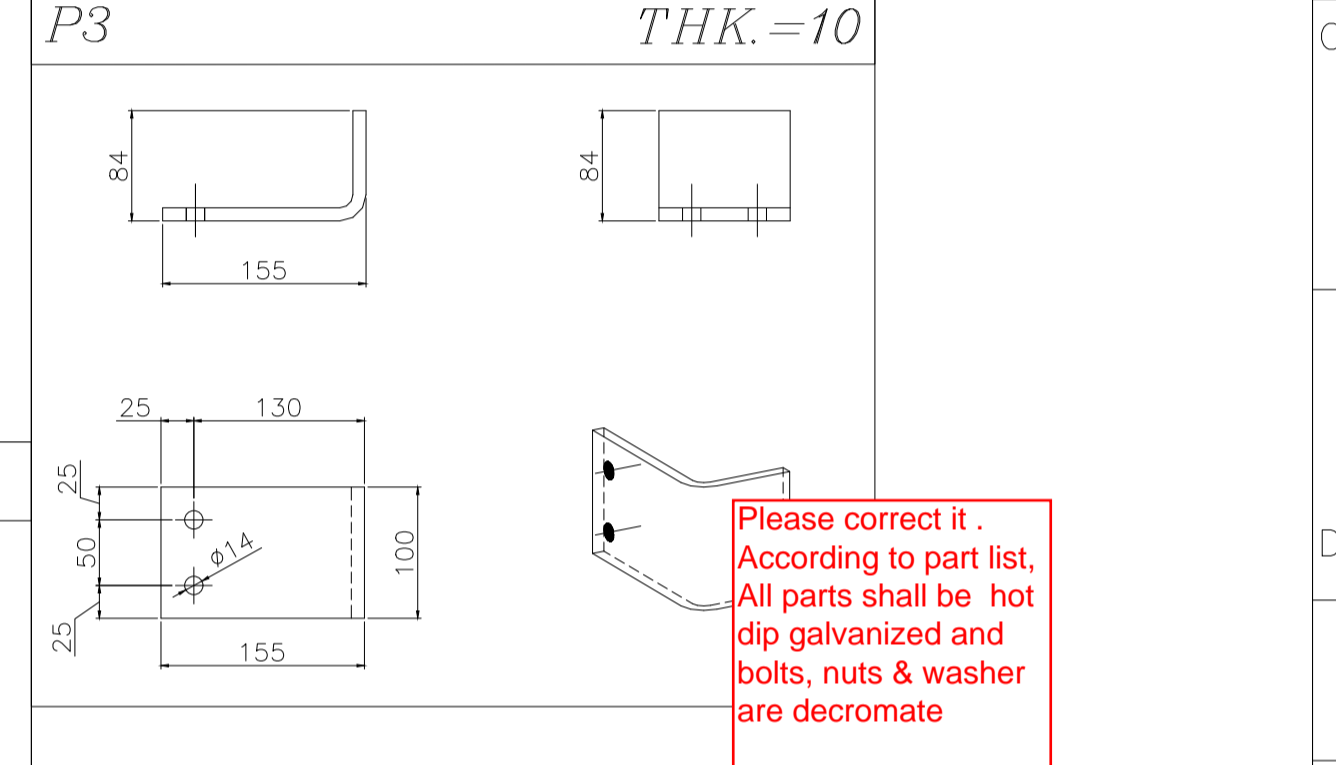
SEC B

Approved as noted



DESCRIPTION	PROFILE	DIMENSION			MATERIAL	QTY.	UNIT WEIGHT (kg)	TOTAL WEIGHT (kg)	REV.
		DIA (mm)	LENGTH (mm)	WIDTH (mm)					
1210-1 WALKWAY FRAME ASS.	UPN140 L60*6	-	2930	750	-	1	132.9	132.9	
1210-2 WALKWAY FRAME ASS.	UPN140 L60*6	-	2930	750	-	1	132.9	132.9	
1220-1 HIGH HANDRAIL ASS.	BOX60*40*2 PIPE 1 1/4" PLATE 5*150	-	2930	1260	-	1	53.9	53.9	
1220-2 HIGH HANDRAIL ASS.	BOX60*40*2 PIPE 1 1/4" PLATE 5*150	-	2930	1260	-	1	53.9	53.9	
1220-3 SHORT HANDRAIL ASS.	BOX60*40*2 PIPE 1 1/4" PLATE 5*150	-	750	1260	-	2	19.4	38.8	
1220-4 SHORT HANDRAIL ASS.	BOX60*40*2 PIPE 1 1/4" PLATE 5*150	-	2930	790	-	1	41.3	41.3	
1220-5 HIGH HANDRAIL ASS.	BOX60*40*2 PIPE 1 1/4" PLATE 5*150	-	2930	790	-	1	41.3	41.3	
1260-1 GRATING	-	-	965(B)	740 (A)	25	6	31	186	
1260-1 GRATING CLAMP	-	-	-	-	-	24	-	-	

PART NO.	DESCRIPTION	PROFILE	DIMENSION			MATERIAL	QTY.	UNIT WEIGHT (kg)	TOTAL WEIGHT (kg)	REV.
			DIA (mm)	LENGTH (mm)	WIDTH (mm)					
1290-1	for WALKWAY FRAME TO STRUCTURE.	-	M12	40	-	DIN933-8.8(Dacromet)	16	-	-	
1290-2	for WALKWAY FRAME TO STRUCTURE.	-	M12	40	-	DIN934-8(Dacromet)	16	-	-	
1290-3	for WALKWAY FRAME TO STRUCTURE.	-	A13	-	-	DIN125A-ST(Dacromet)	32	-	-	
1290-4	for WALKWAY FRAME TO STRUCTURE.	-	M16	40	-	DIN933-8.8(Dacromet)	40	-	-	
1290-5	for HANDRAIL ASS.	-	M16	-	-	DIN934-8(Dacromet)	40	-	-	
1290-6	for HANDRAIL ASS.	-	A17	-	-	DIN125A-ST(Dacromet)	80	-	-	
1290-7	for HANDRAIL ASS.	-	M6	50	-	DIN933-8.8(Dacromet)	24	-	-	
1290-8	for GRATING CLAMP	-	M6	-	-	DIN934-8(Dacromet)	24	-	-	
1290-9	for GRATING CLAMP	-	A7	-	-	DIN125A-ST(Dacromet)	48	-	-	



NOTES:
 1- ALL DIMENSIONS ARE IN MILLIMETER.
 2- ALL PARTS SHALL PAINTED ACCORDING TO E1027-DMF-VD-QC-PRO-024
 3- BOLTS & NUTS & WASHERS SHALL BE HOT DIP GALVANIZED IN ACCORDANCE WITH ASTM - A153 OR EN ISO 1461
 4- WELD: CONTINUOUS WELD.
 MIN. HEIGHT OF FILLET WELD = 0.7 x MIN. THK.
 < MAX. THK. < 7mm
 < MAX. THK. > 7mm

TOLERANCES			
THE FOLLOWING VALUES ARE APPLICABLE TO THE DIMENSIONS THAT ARE NOT PROVIDED WITH TOLERANCES ON DRAWING			
NOMINAL DIMENSIONS PER MILLIMETER STEPS	0	201	801
TOLERANCES	± 0.2	± 0.3	± 0.5
TOLERANCE ON CENTER DISTANCES ± 1.5			
THE TOLERANCES SHOWN HERE ARE NOT CUMULATIVE			

General Arrangement Drawing	1158-A01-1000-00	E1027-DMF-VD-ME-DWG-003
Steel Structure Drawing	1158-A01-1100-00	E1027-DMF-VD-ST-DWG-013
Ladder Drawing	1158-A01-1520-00	E1027-DMF-VD-ST-DWG-015

REV	DATE	DESCRIPTION	J.M.	J.B.L.	J.B.L.	AGHZ
R0	10/05/2024	ISSUED FOR APPROVAL				
REV	DATE	DESCRIPTION	DRAWN BY	CHECKED BY	APPROVED BY	FINAL APPROVED BY

ENBR TEKNOLOJİ

PROJECT : AIR COOLER FOR Toase-the Park Sanati Gohar Ofogh Petrochemical Co. Header Walkway Drawing 1158-A01-1210-00

dwtd Damafin thermal technology

DWG. NO. : E1027-DMF-VD-ST-DWG-014
 SCALE : NTS SIZE : A1 REV : R0

THIS DOCUMENT OF A CONFIDENTIAL NATURE IS THE PROPERTY OF DAMAFIN AND SHALL NOT BE REPRODUCED IN ANY MANNER, NOR USED FOR ANY PURPOSE WHATSOEVER, EXCEPT BY WRITTEN PERMISSION OF DAMAFIN.