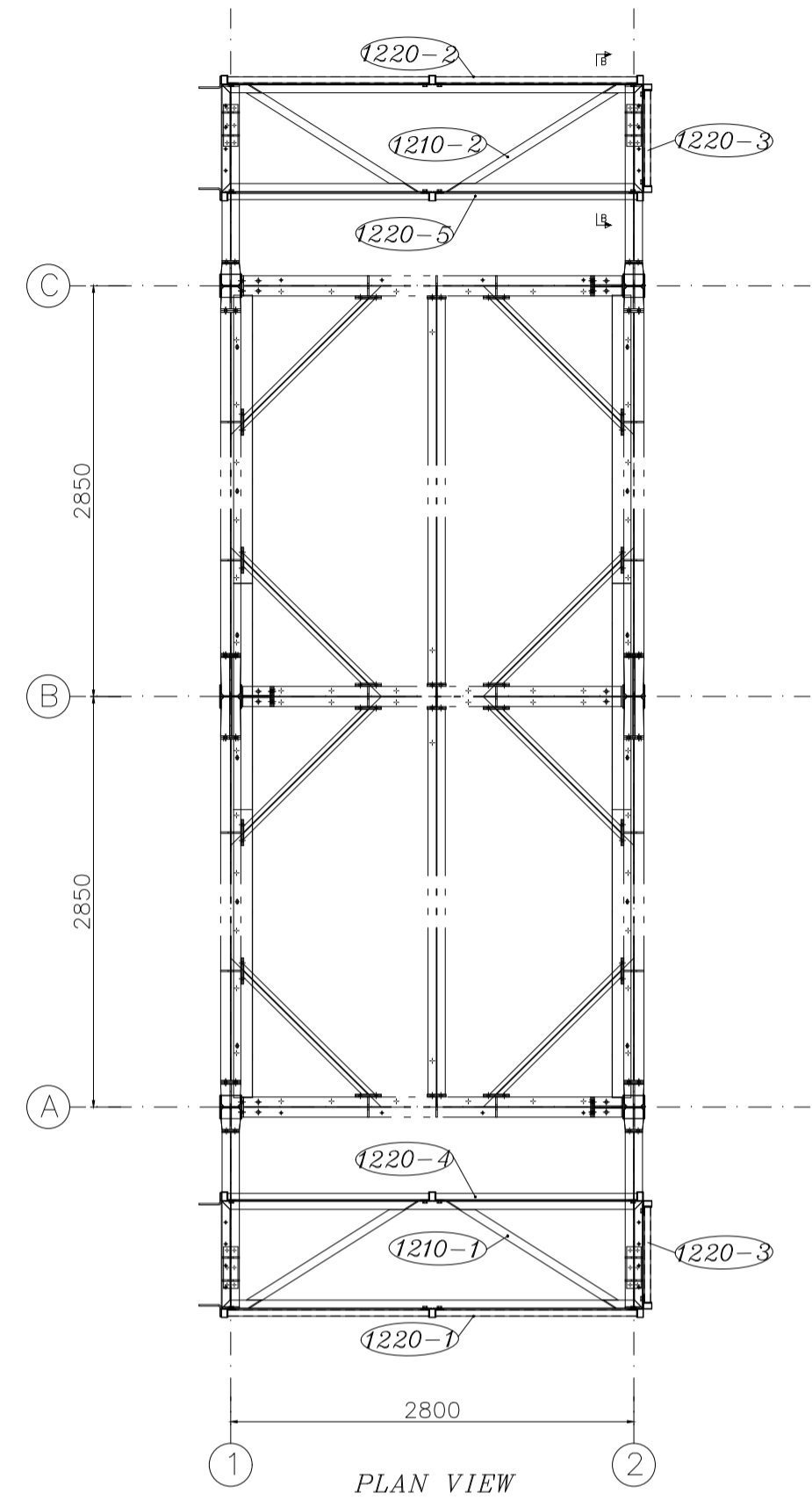
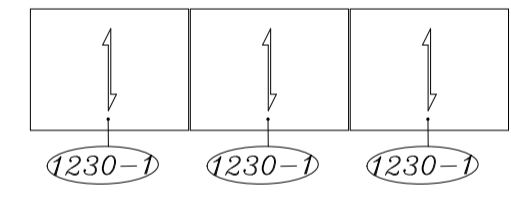


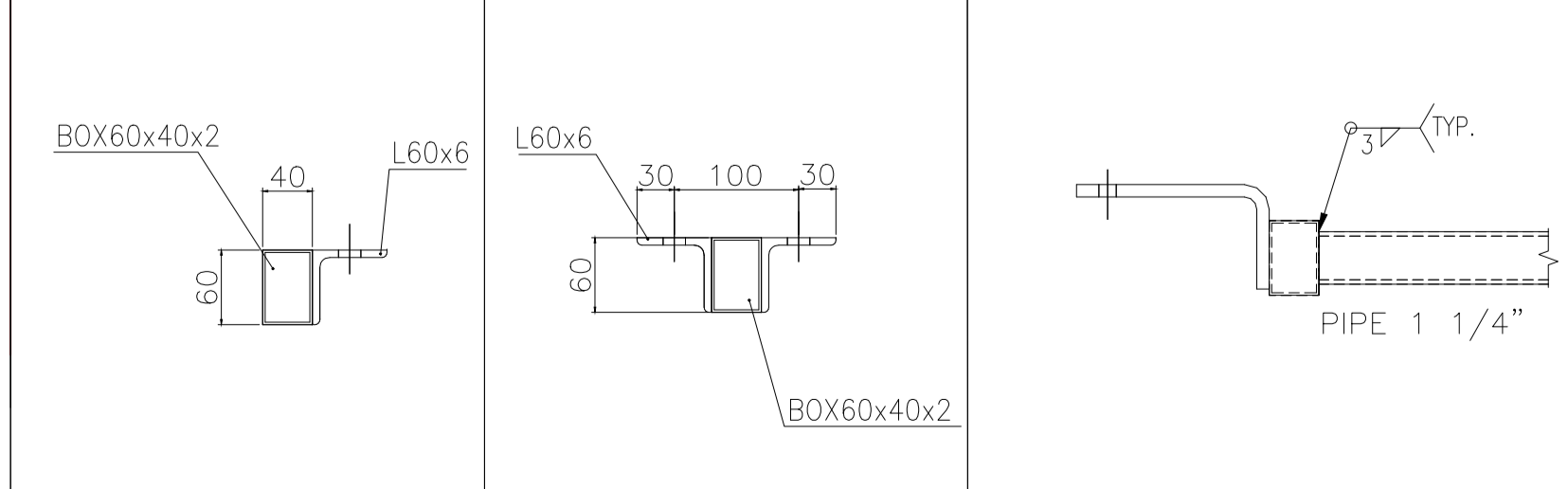
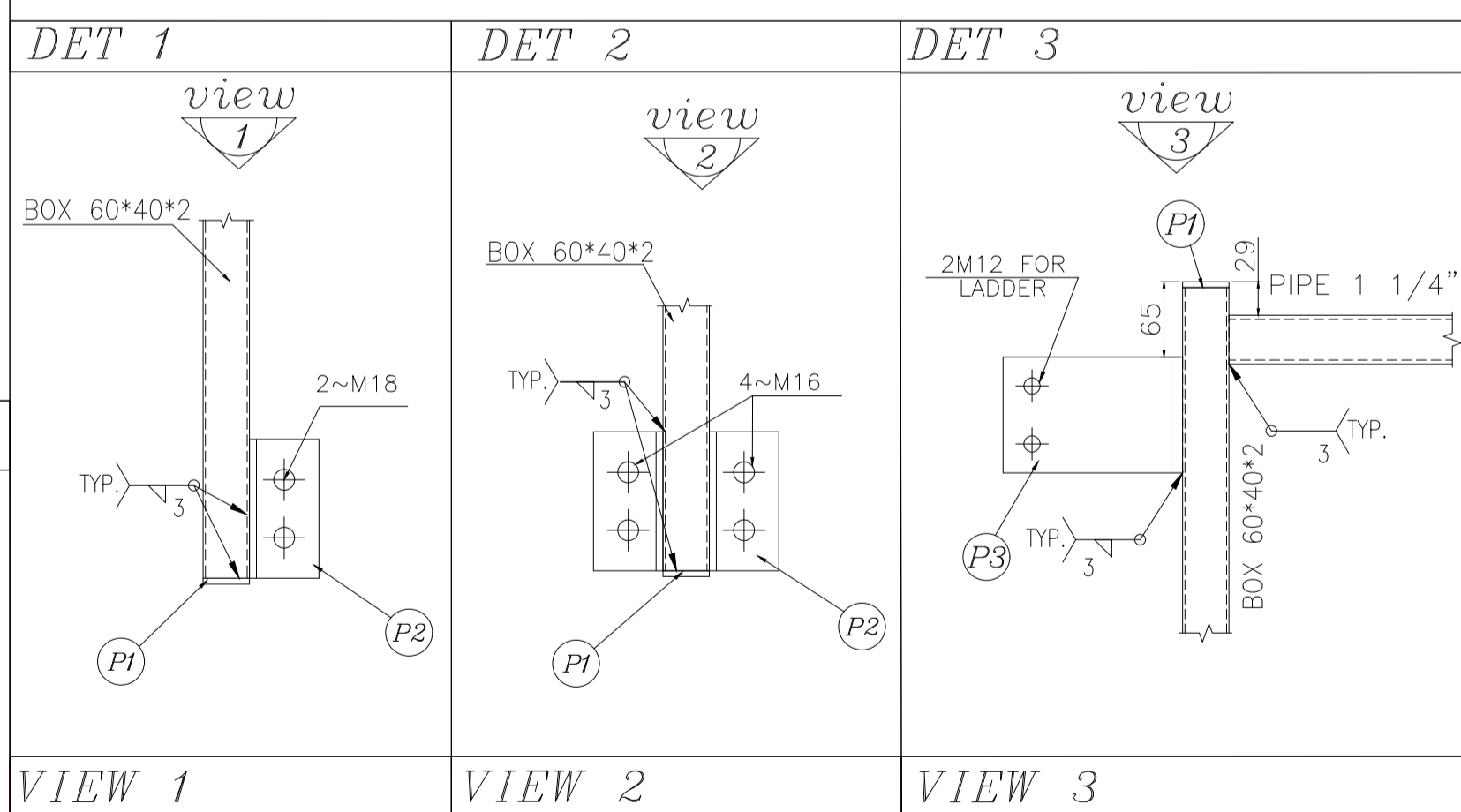
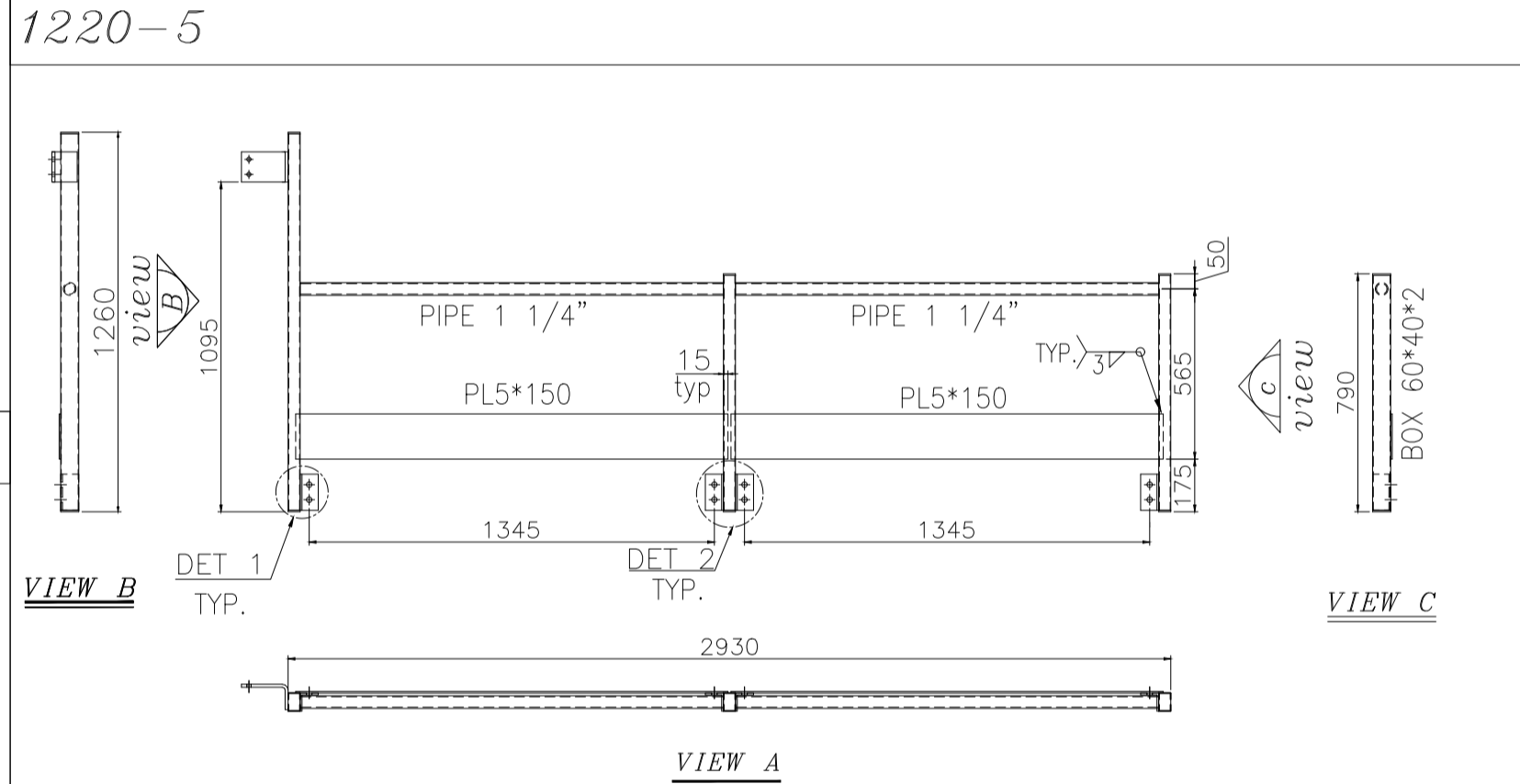
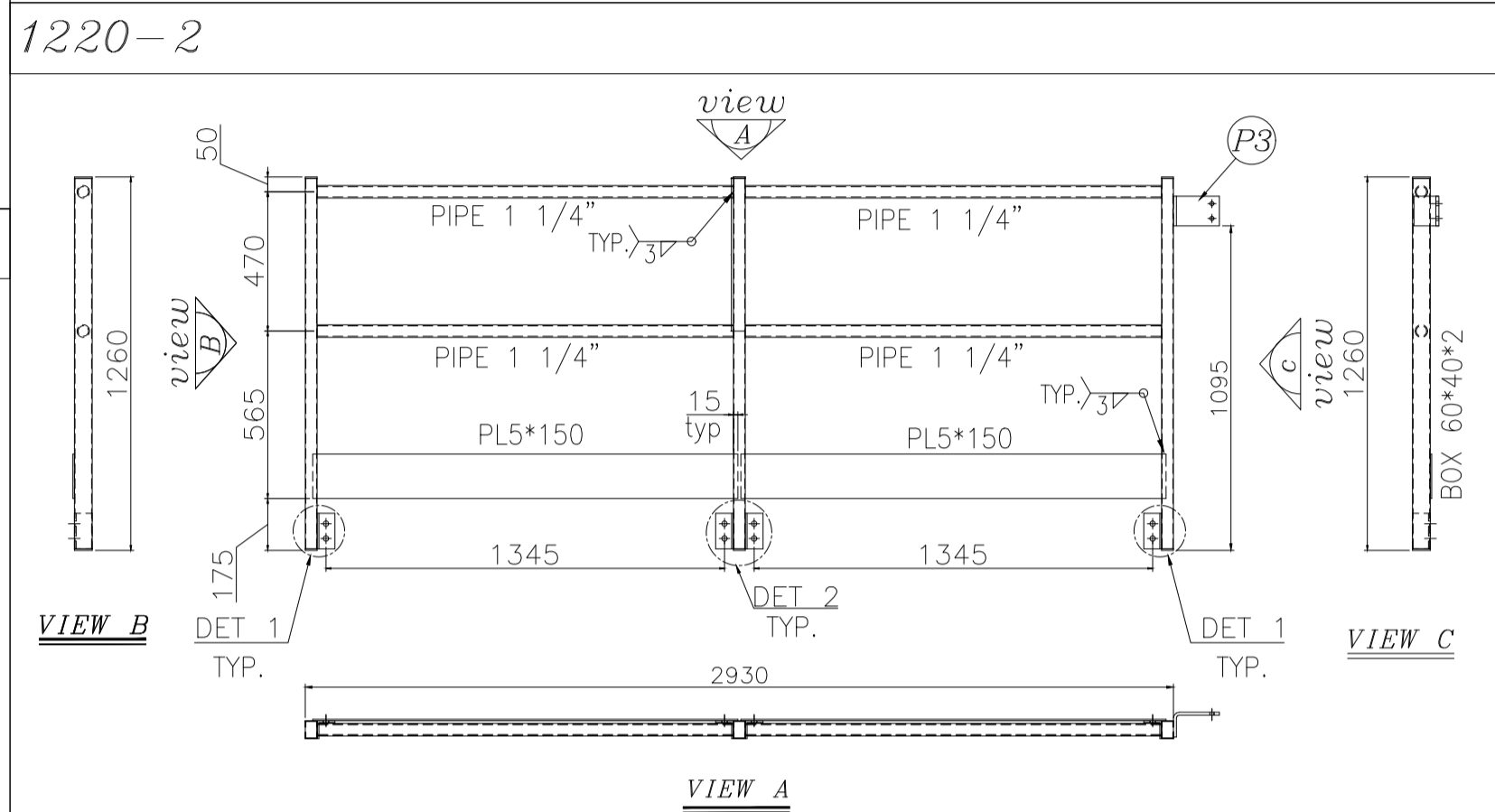
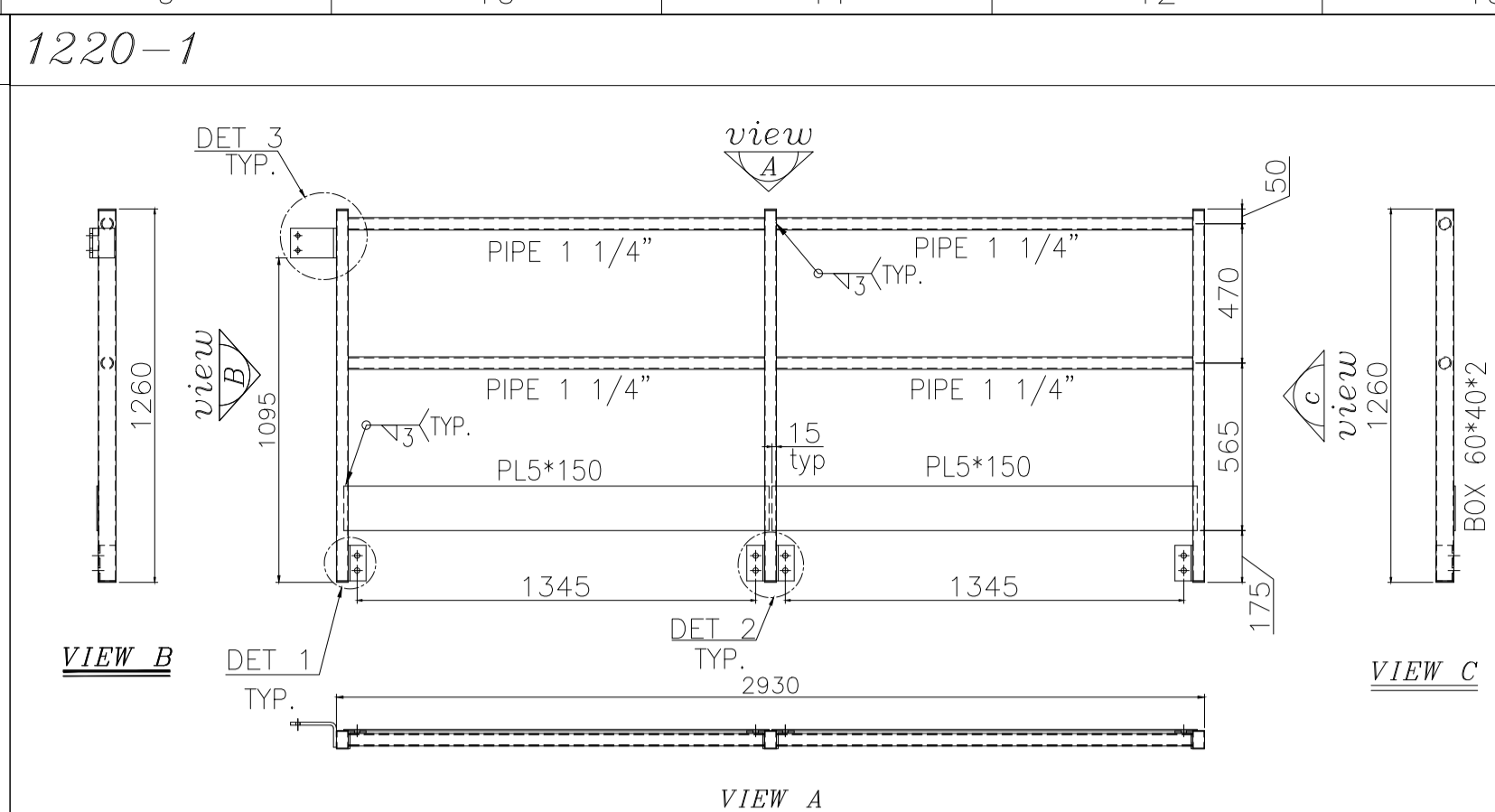
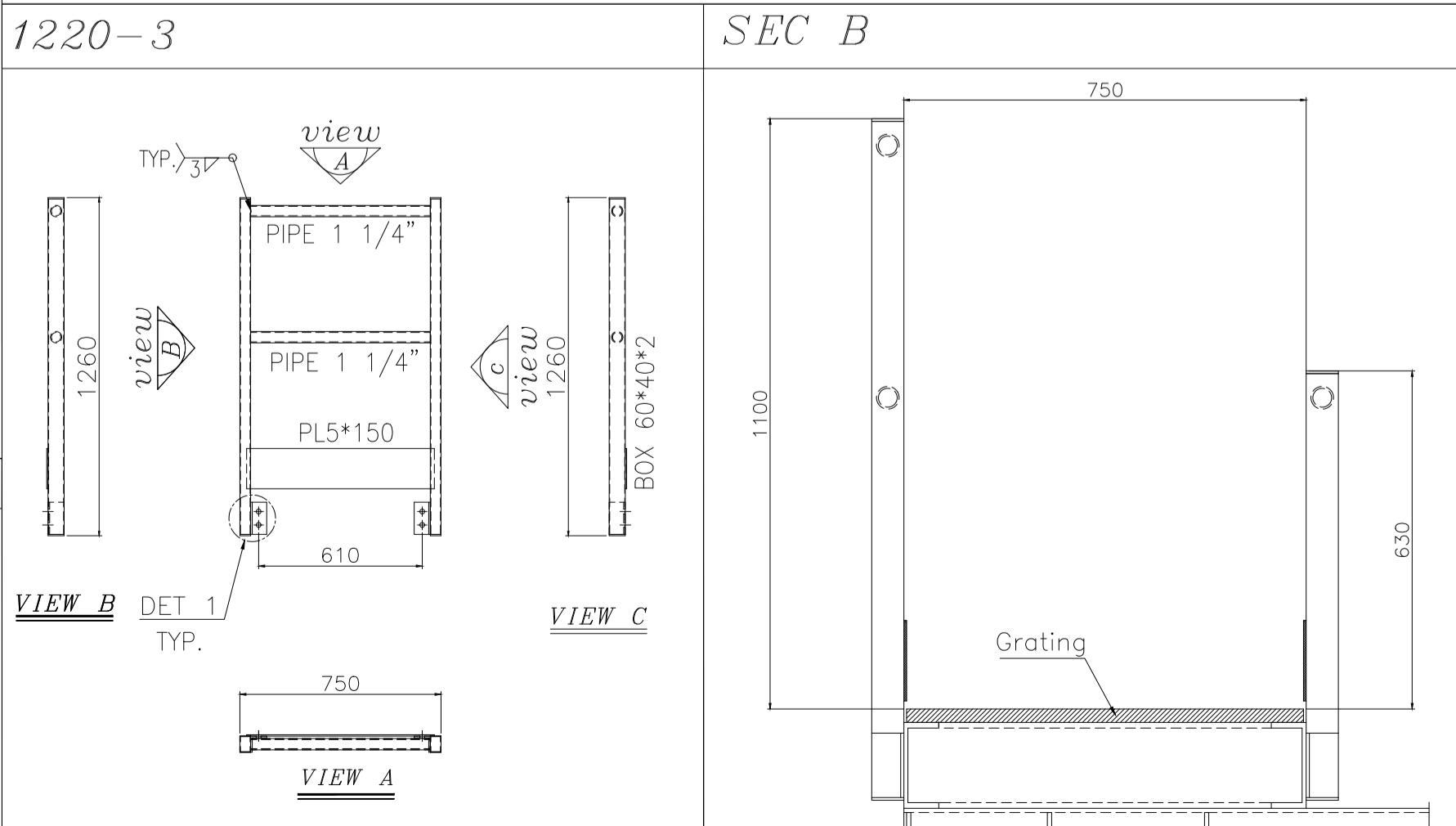
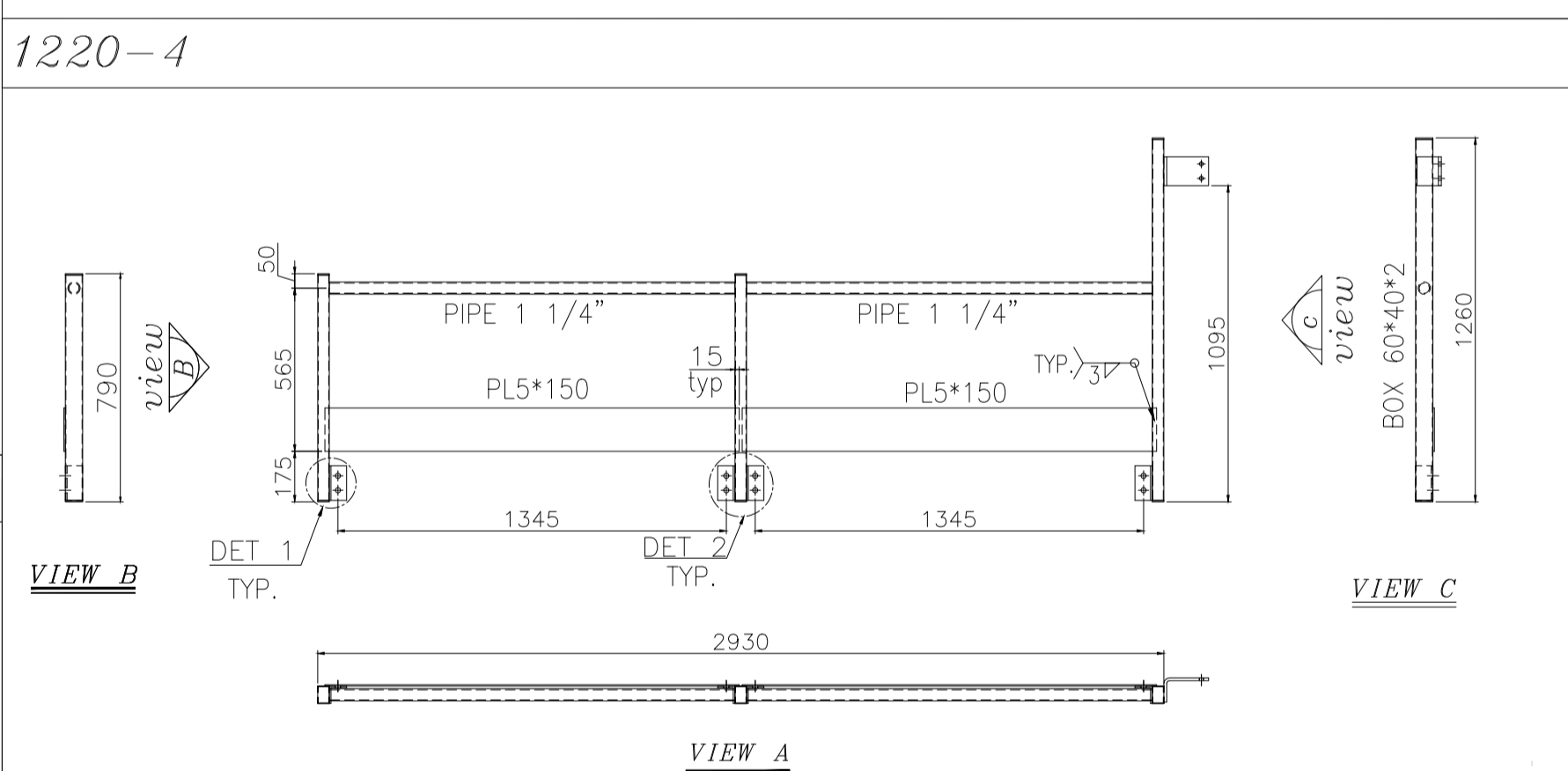
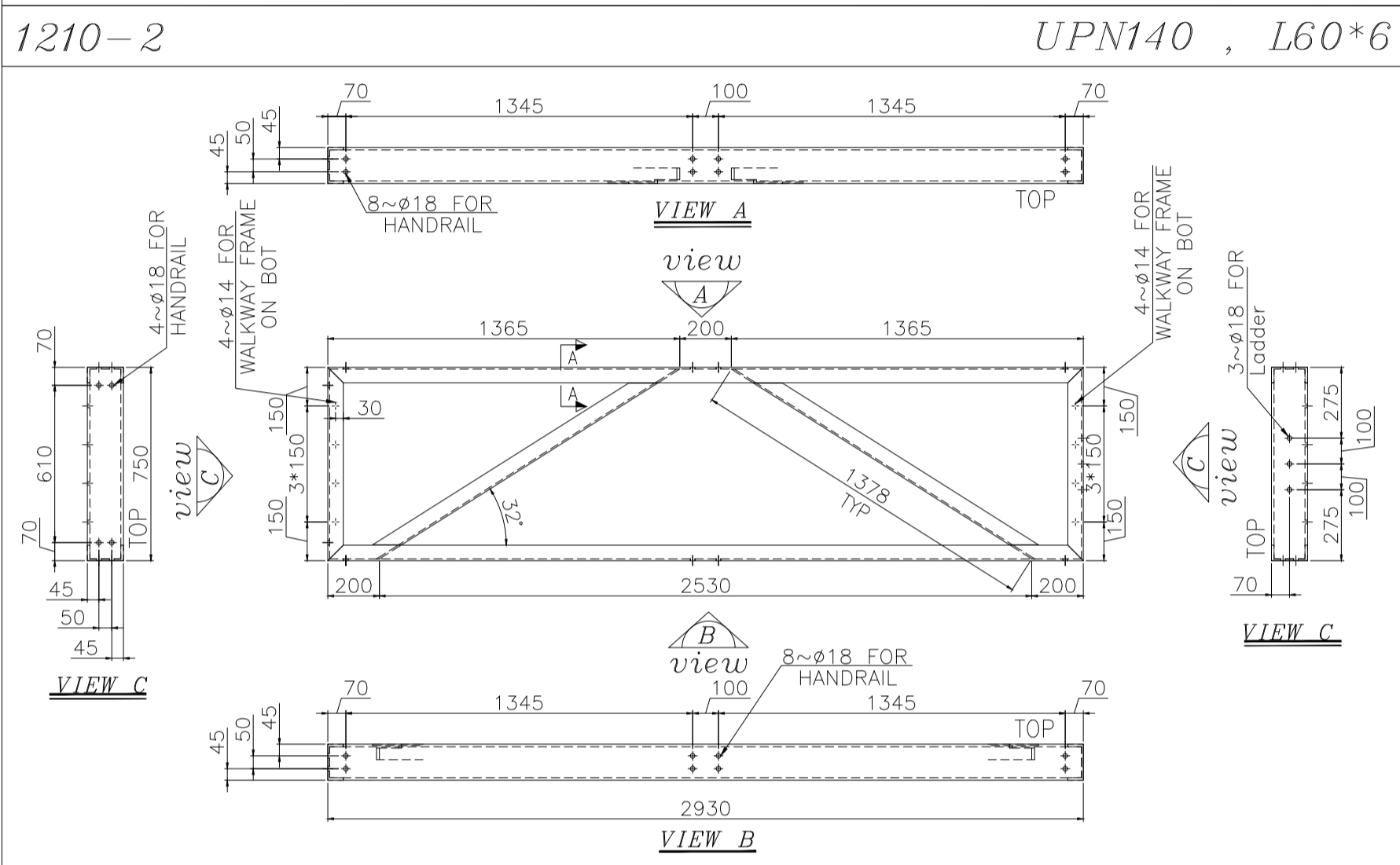
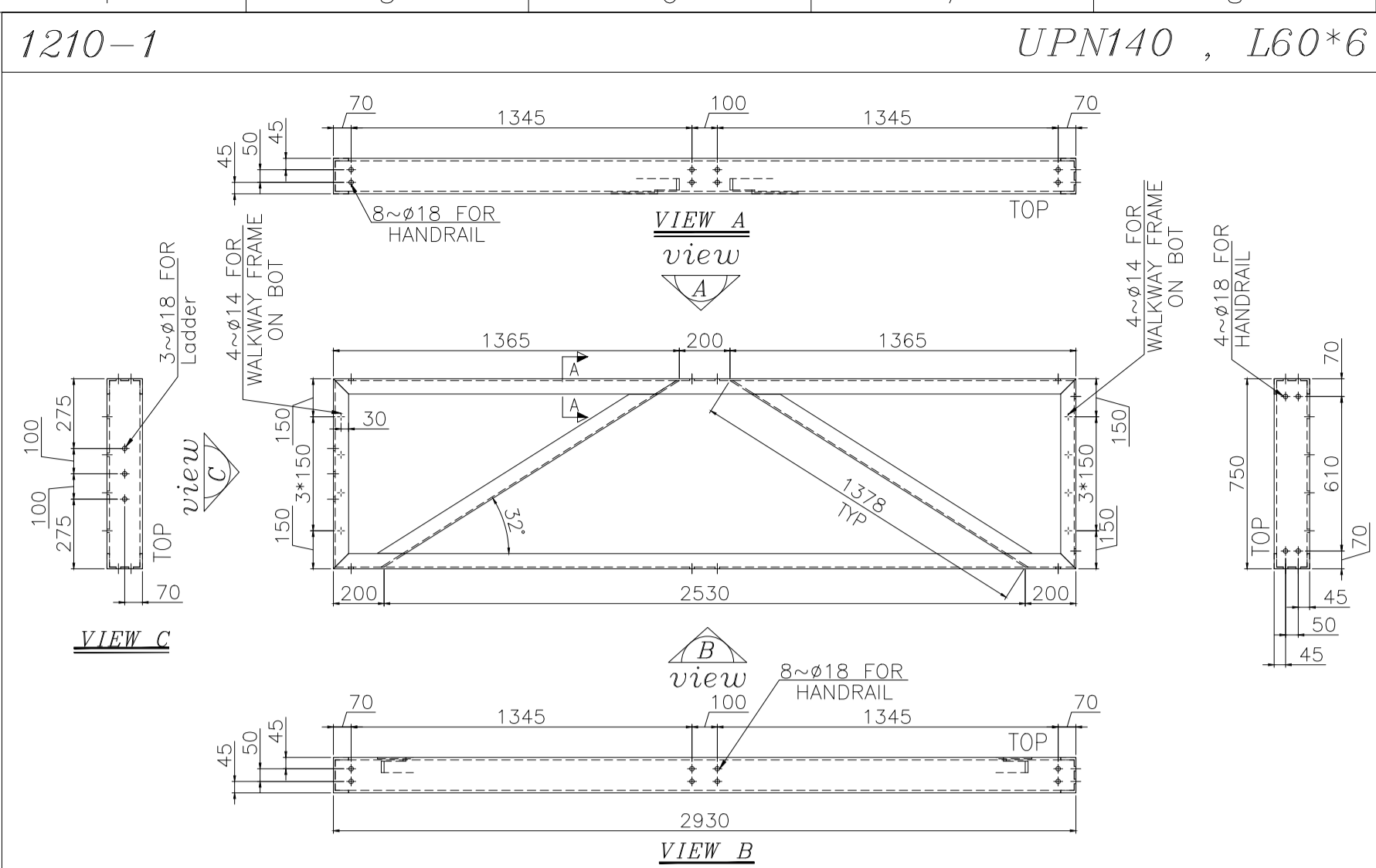
Grating Arrangement



PLAN VIEW

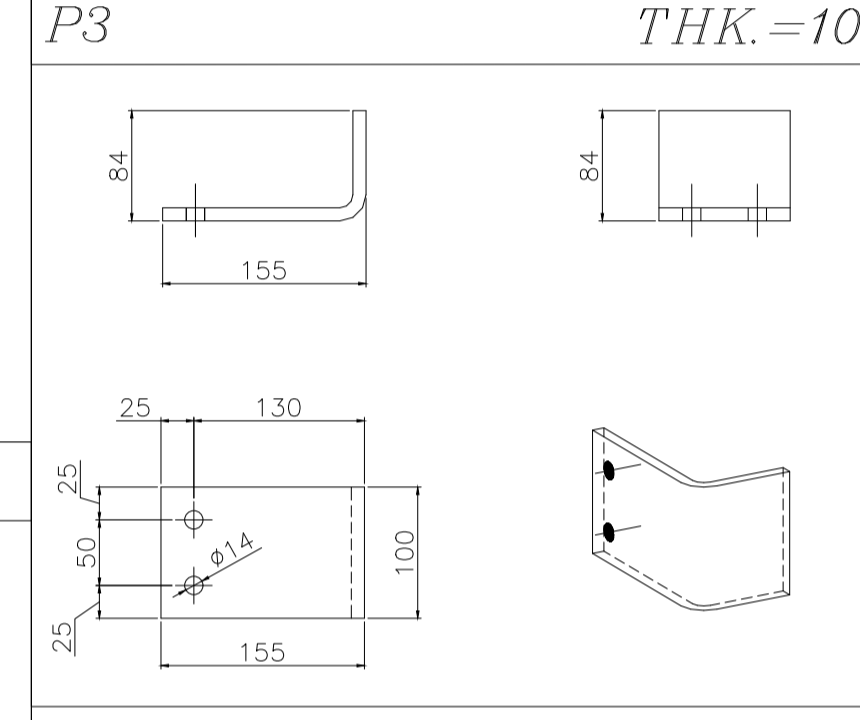


Grating Arrangement



TOTAL UNITS=2										
PART LIST FOR 1 UNIT										
Dtl Assembly No	DESCRIPTION	PROFILE	DIMENSION			MATERIAL	QTY.	UNIT WEIGHT (kg)	TOTAL WEIGHT (kg)	REV.
			DIA (mm)	LENGTH (mm)	WIDTH (mm)					
1210-1	WALKWAY FRAME ASS.	UPN140 L60x6	-	2930	750	-	ST-37(Gab.)	1	132.9	132.9
1210-2	WALKWAY FRAME ASS.	UPN140 L60x6	-	2930	750	-	ST-37(Gab.)	1	132.9	132.9
1220-1	HIGH HANDRAIL ASS.	BOX60x40x2 PIPE 1 1/4" PLATE 5*150	-	2930	1260	-	ST-37(Gab.)	1	53.9	53.9
1220-2	HIGH HANDRAIL ASS.	BOX60x40x2 PIPE 1 1/4" PLATE 5*150	-	2930	1260	-	ST-37(Gab.)	1	53.9	53.9
1220-3	SHORT HANDRAIL ASS.	BOX60x40x2 PIPE 1 1/4" PLATE 5*150	-	750	1260	-	ST-37(Gab.)	2	19.4	38.8
1220-4	SHORT HANDRAIL ASS.	BOX60x40x2 PIPE 1 1/4" PLATE 5*150	-	2930	790	-	ST-37(Gab.)	1	41.3	41.3
1220-5	HIGH HANDRAIL ASS.	BOX60x40x2 PIPE 1 1/4" PLATE 5*150	-	2930	790	-	ST-37(Gab.)	1	41.3	41.3
1230-1	GRATING	-	-	965(B)	740 (A)	25	ST-37(Gab.)	6	31	186
1260-1	GRATING CLAMP	-	-	-	-	-	ST-37(Gab.)	24	-	-
TOTAL WEIGHT (kg)								681		

LIST OF BOLTS & NUTS & WASHERS for 1 Unit										
PART NO.	DESCRIPTION	PROFILE	DIMENSION			MATERIAL	QTY.	UNIT WEIGHT (kg)	TOTAL WEIGHT (kg)	REV.
			DIA (mm)	LENGTH (mm)	WIDTH (mm)					
1290-1	for WALKWAY FRAME TO STRUCTURE	-	M12	40	-	DIN933-8.8(Dacromet)	16	-	-	
1290-2	for WALKWAY FRAME TO STRUCTURE	-	M12	40	-	DIN934-8.8(Dacromet)	16	-	-	
1290-3	for WALKWAY FRAME TO STRUCTURE	-	A13	-	-	DIN125A-ST(Dacromet)	32	-	-	
1290-4	for WALKWAY FRAME TO STRUCTURE	-	M16	40	-	DIN933-8.8(Dacromet)	40	-	-	
1290-5	for HANDRAIL ASS	-	M16	-	-	DIN934-8.8(Dacromet)	40	-	-	
1290-6	for HANDRAIL ASS	-	A17	-	-	DIN125A-ST(Dacromet)	80	-	-	
1290-7	for HANDRAIL ASS	-	M6	50	-	DIN933-8.8(Dacromet)	24	-	-	
1290-8	for GRATING CLAMP	-	M6	-	-	DIN934-8.8(Dacromet)	24	-	-	
1290-9	for GRATING CLAMP	-	A7	-	-	DIN125A-ST(Dacromet)	48	-	-	

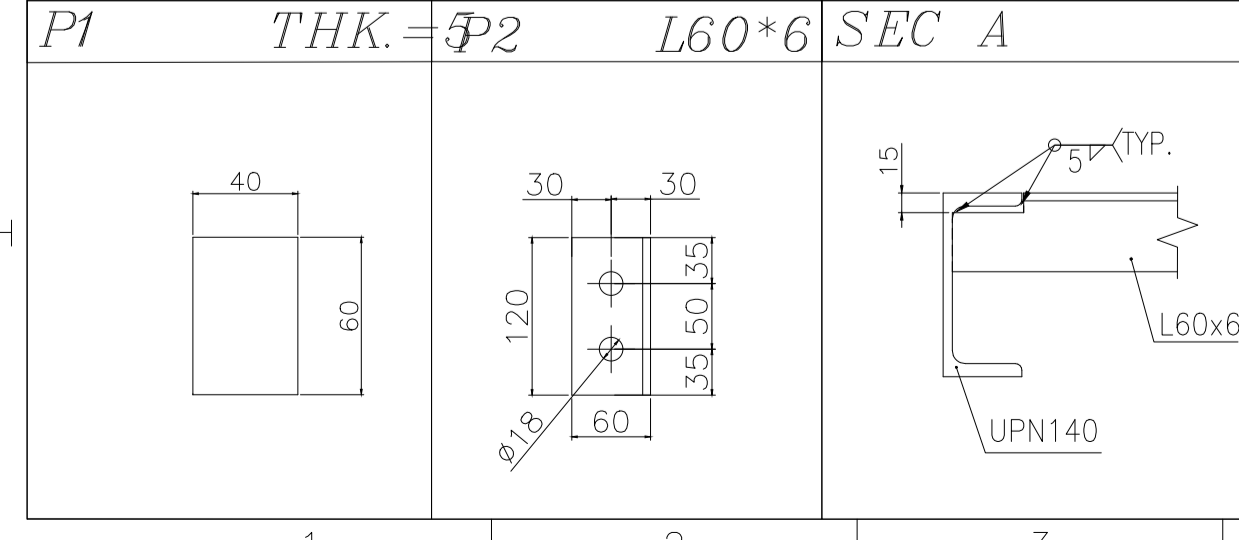


- NOTES:**
- ALL DIMENSIONS ARE IN MILLIMETER.
 - ALL PARTS SHALL PAINTED ACCORDING TO E1027-DMF-VD-QC-PRO-024
 - BOLTS & NUTS & WASHERS SHALL BE HOT DIP GALVANIZED IN ACCORDANCE WITH ASTM - A153 OR EN ISO 1461
 - WELD: CONTINUOUS WELD.
MIN. HEIGHT OF FILLET WELD = 0.7 x MIN. THK.
MAX. THK. < 7mm
MAX. THK. > 7mm

TOLERANCES				
THE FOLLOWING VALUES ARE APPLICABLE TO THE DIMENSIONS THAT ARE NOT PROVIDED WITH TOLERANCES ON DRAWING				
NOMINAL DIMENSIONS PER MILLIMETER STEPS	0	201	801	2001
TOLERANCES	± 0.2	± 0.3	± 0.5	± 1.0
TOLERANCE ON CENTER DISTANCES ± 1.5				
THE TOLERANCES SHOWN HERE ARE NOT CUMULATIVE				

General Arrangement Drawing	1158-A01-1000-00	E1027-DMF-VD-ME-DWG-003
Steel Structure Drawing	1158-A01-1100-00	E1027-DMF-VD-ST-DWG-013
Ladder Drawing	1158-A01-1520-00	E1027-DMF-VD-ST-DWG-015

GRATING DESCRIPTION	GRATING CLAMP
A SEE PART LIST	
B SEE PART LIST	
C 25 mm	
D 5 mm	
E 30 mm	
P1 THK.=P2 L60*6 SEC A	



RO	10/05/2024	ISSUED FOR APPROVAL	J.M.	J.B.L.	J.B.L.	AGHZ	
REV	DATE	DESCRIPTION	DRAWN BY	CHECKED BY	APPROVED BY	FINAL APPROVED BY	
CLIENT:			CONTRACTOR:				
							PROJECT :
DWG. NO.	E1027-DMF-VD-ST-DWG-014						
SCALE :	NTS		SIZE :	A1		REV. :	R0
THIS DOCUMENT OF A CONFIDENTIAL NATURE IS THE PROPERTY OF DAMAFIN AND SHALL NOT BE REPRODUCED IN ANY MANNER, NOR USED FOR ANY PURPOSE WHAT SO EVER, EXCEPT BY WRITTEN PERMISSION OF DAMAFIN.							