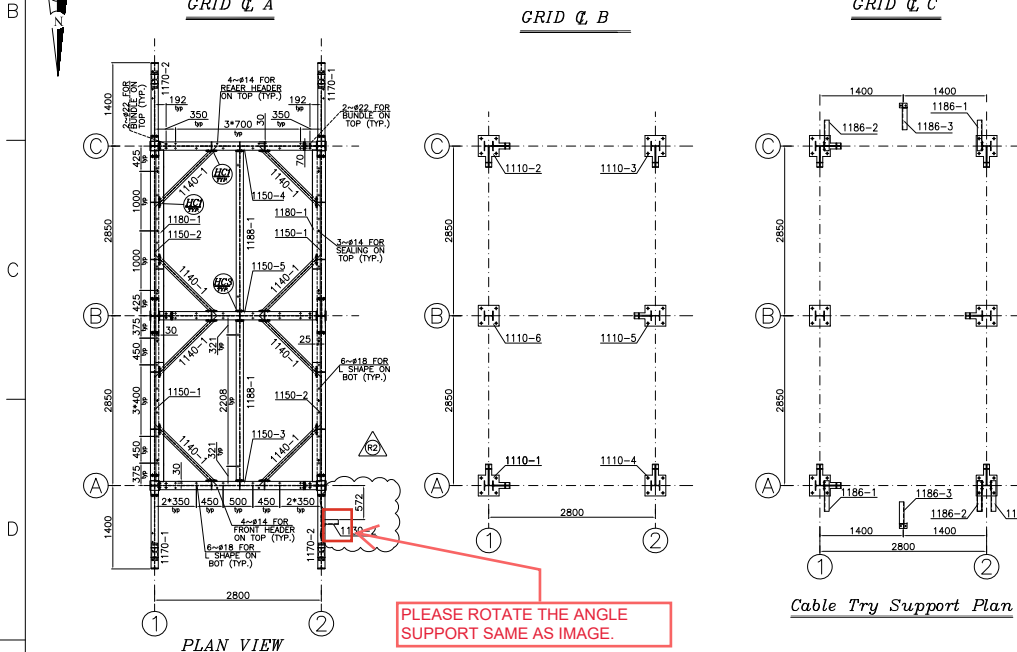
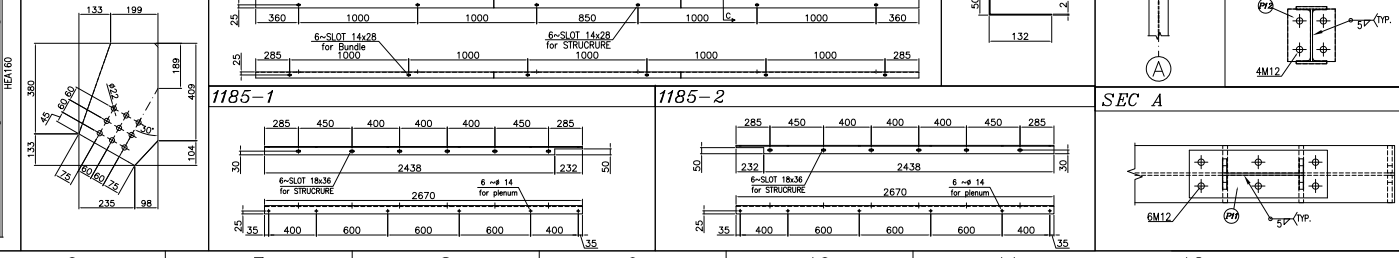
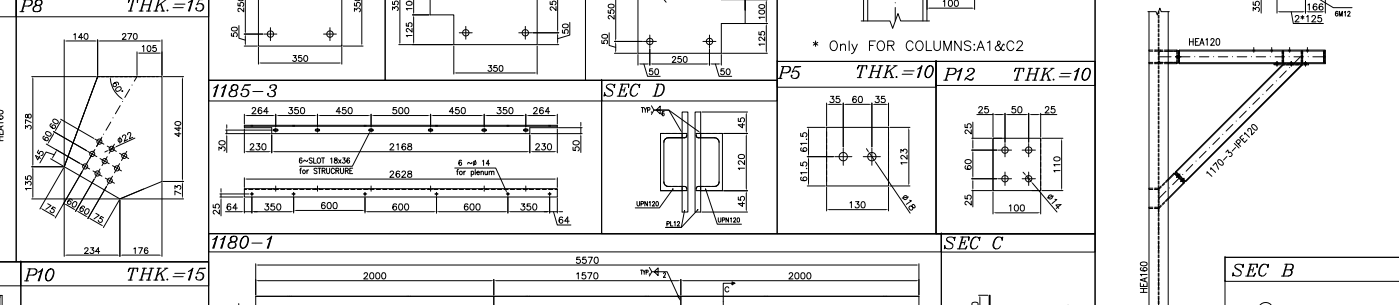
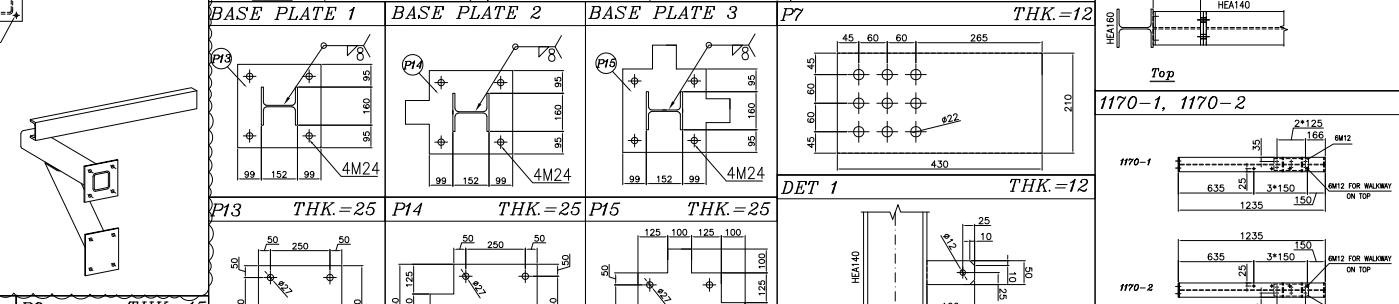
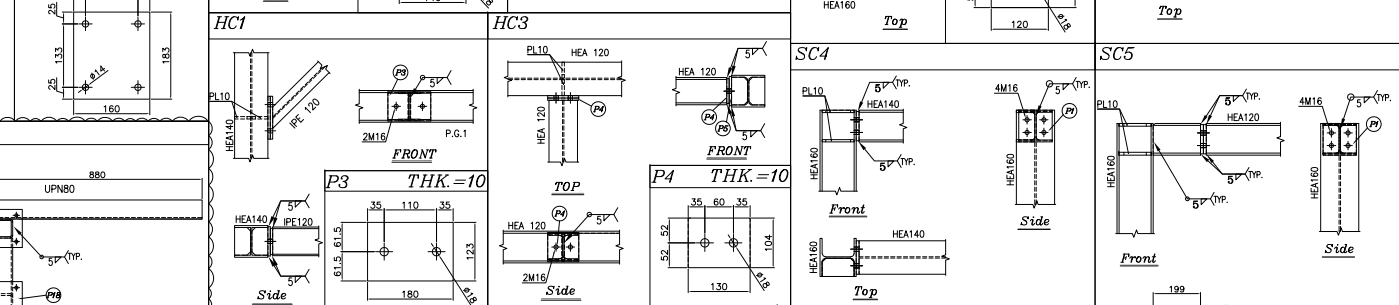
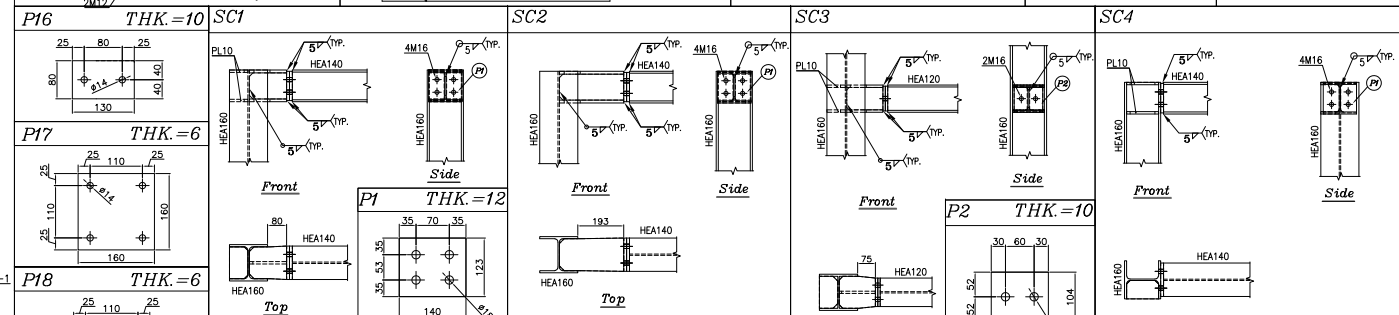
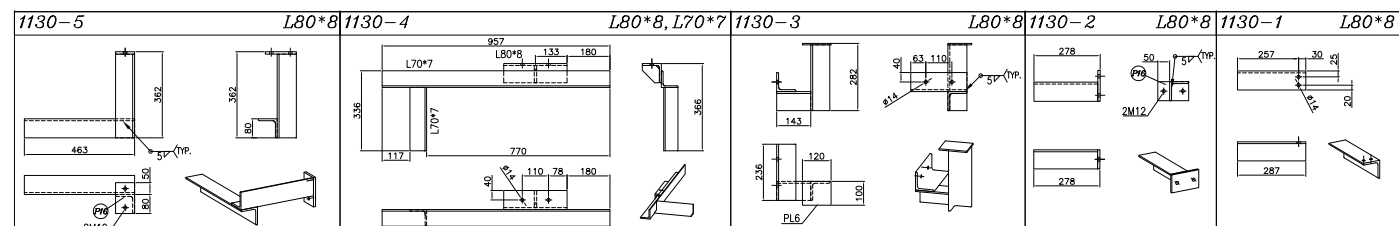


This dimension should not change. please change to "4913". please see comment on GA. It should be moved 45 mm toward the walkway. elevation shall be kept same as previous revision



PLEASE ROTATE THE ANGLE SUPPORT SAME AS IMAGE.



TOTAL PARTS - 1										
PART NO.	DESCRIPTION	PROFILE	DEA (mm)	LENGTH (mm)	WIDTH (mm)	THK (mm)	MATERIAL	QTY.	UNIT WEIGHT (kg)	TOTAL WEIGHT (kg)
1110.1	COLUMN ASS.	HEA160	160	4000	-	-	ST.PAINTED	1	247.3	247.3
1110.2	COLUMN ASS.	HEA160	160	4000	-	-	ST.PAINTED	1	246.8	246.8
1110.3	COLUMN ASS.	HEA160	160	4000	-	-	ST.PAINTED	1	251.8	251.8
1110.4	COLUMN ASS.	HEA160	160	4000	-	-	ST.PAINTED	1	249.8	249.8
1110.5	COLUMN ASS.	HEA160	160	4000	-	-	ST.PAINTED	1	274.4	274.4
1110.6	COLUMN ASS.	HEA160	160	4000	-	-	ST.PAINTED	1	208.6	208.6
1110.7	PIPE SUPPORT ASS.	L80*8	80	237	-	-	ST.PAINTED	1	2.8	2.8
1110.8	PIPE SUPPORT ASS.	L80*8	80	278	-	-	ST.PAINTED	1	3.4	3.4
1110.9	PIPE SUPPORT ASS.	L80*8	80	282	223	-	ST.PAINTED	1	6.9	6.9
1110.10	PIPE SUPPORT ASS.	L80*8	80	997	206	-	ST.PAINTED	1	11.9	11.9
1110.11	PIPE SUPPORT ASS.	L80*8	80	463	406	-	ST.PAINTED	1	8.7	8.7
1110.12	PIPE SUPPORT ASS.	L80*8	80	462	406	-	ST.PAINTED	1	25.2	25.2
1110.13	PIPE SUPPORT ASS.	L80*8	80	412	-	-	ST.PAINTED	4	3.4	13.6
1110.14	PIPE SUPPORT ASS.	L80*8	80	225	-	-	ST.PAINTED	4	3.4	13.6
1110.15	HORIZONTAL BRACING ASS.	HEA120	120	1208	-	-	ST.PAINTED	8	16.4	131.2
1110.16	BEAM ASS.	HEA140	140	2203	-	-	ST.PAINTED	2	47.5	95.0
1110.17	BEAM ASS.	HEA140	140	2203	-	-	ST.PAINTED	2	47.5	95.0
1110.18	BEAM ASS.	HEA140	140	2427	-	-	ST.PAINTED	1	71.1	71.1
1110.19	BEAM ASS.	HEA140	140	2427	-	-	ST.PAINTED	1	71.1	71.1
1110.20	BEAM ASS.	HEA140	140	2427	-	-	ST.PAINTED	1	75.8	75.8
1110.21	UPN120	UPN120	120	4034	-	-	ST.PAINTED	8	97.2	777.6
1110.22	UPN120	UPN120	120	4034	-	-	ST.PAINTED	8	96.9	780.4
1110.23	UPN120	UPN120	120	1235	-	-	ST.PAINTED	2	27.9	55.8
1110.24	UPN120	UPN120	120	1235	-	-	ST.PAINTED	2	27.9	55.8
1110.25	SEALING ASS.	PL10	10	1439	-	-	ST.PAINTED	4	17.5	70.0
1110.26	PLATE	A17	870	182	2	-	ST.PAINTED	2	15.7	31.4
1110.27	L-SHAPE PLENUM	L70*7	70	2670	-	-	ST.PAINTED	2	18.7	37.4
1110.28	L-SHAPE PLENUM	L70*7	70	2670	-	-	ST.PAINTED	2	18.7	37.4
1110.29	L-SHAPE PLENUM	L70*7	70	2628	-	-	ST.PAINTED	4	18.4	73.6
1110.30	CABLE TRY SUPPORT ASS.	L80*8	80	513	-	-	ST.PAINTED	3	5	15
1110.31	CABLE TRY SUPPORT ASS.	L80*8	80	513	-	-	ST.PAINTED	4	5	20
1110.32	CABLE TRY SUPPORT ASS.	L80*8	80	446	-	-	ST.PAINTED	2	13.7	27.4
1110.33	THE ROD BEAM ASS.	HEA120	120	2000	-	-	ST.PAINTED	2	85.2	170.4

TOTAL WEIGHTS										
PART NO.	DESCRIPTION	PROFILE	DEA (mm)	LENGTH (mm)	WIDTH (mm)	THK (mm)	MATERIAL	QTY.	UNIT WEIGHT (kg)	TOTAL WEIGHT (kg)
1110.1	BEAM ASS.	M16	16	90	-	-	DEV 534.8 (DACROMET)	56	-	-
1110.2	BEAM ASS.	M16	16	90	-	-	DEV 534.8 (DACROMET)	52	-	-
1110.3	BEAM ASS.	M16	16	90	-	-	DEV 534.8 (DACROMET)	112	-	-
1110.4	BEAM ASS.	M16	16	90	-	-	DEV 534.8 (DACROMET)	126	-	-
1110.5	BEAM ASS.	M16	16	90	-	-	DEV 534.8 (DACROMET)	126	-	-
1110.6	BEAM ASS.	M16	16	90	-	-	DEV 534.8 (DACROMET)	252	-	-
1110.7	BEAM ASS.	M16	16	90	-	-	DEV 534.8 (DACROMET)	154	-	-
1110.8	BEAM ASS.	M16	16	90	-	-	DEV 534.8 (DACROMET)	154	-	-
1110.9	BEAM ASS.	M16	16	90	-	-	DEV 534.8 (DACROMET)	308	-	-
1110.10	BEAM ASS.	M16	16	90	-	-	DEV 534.8 (DACROMET)	22	-	-
1110.11	BEAM ASS.	M16	16	90	-	-	DEV 534.8 (DACROMET)	22	-	-
1110.12	BEAM ASS.	M16	16	90	-	-	DEV 534.8 (DACROMET)	64	-	-
1110.13	BEAM ASS.	M16	16	90	-	-	DEV 534.8 (DACROMET)	8	-	-
1110.14	BEAM ASS.	M16	16	90	-	-	DEV 534.8 (DACROMET)	8	-	-
1110.15	BEAM ASS.	M16	16	90	-	-	DEV 534.8 (DACROMET)	16	-	-
1110.16	BEAM ASS.	M16	16	90	-	-	DEV 534.8 (DACROMET)	40	-	-
1110.17	BEAM ASS.	M16	16	90	-	-	DEV 534.8 (DACROMET)	40	-	-
1110.18	BEAM ASS.	M16	16	90	-	-	DEV 534.8 (DACROMET)	40	-	-
1110.19	BEAM ASS.	M16	16	90	-	-	DEV 534.8 (DACROMET)	8	-	-
1110.20	BEAM ASS.	M16	16	90	-	-	DEV 534.8 (DACROMET)	8	-	-
1110.21	BEAM ASS.	M16	16	90	-	-	DEV 534.8 (DACROMET)	16	-	-
1110.22	BEAM ASS.	M16	16	90	-	-	DEV 534.8 (DACROMET)	26	-	-
1110.23	BEAM ASS.	M16	16	90	-	-	DEV 534.8 (DACROMET)	36	-	-
1110.24	BEAM ASS.	M16	16	90	-	-	DEV 534.8 (DACROMET)	36	-	-
1110.25	BEAM ASS.	M16	16	90	-	-	DEV 534.8 (DACROMET)	72	-	-
1110.26	BEAM ASS.	M16	16	90	-	-	DEV 534.8 (DACROMET)	18	-	-
1110.27	BEAM ASS.	M16	16	90	-	-	DEV 534.8 (DACROMET)	18	-	-
1110.28	BEAM ASS.	M16	16	90	-	-	DEV 534.8 (DACROMET)	48	-	-
1110.29	BEAM ASS.	M16	16	90	-	-	DEV 534.8 (DACROMET)	48	-	-
1110.30	BEAM ASS.	M16	16	90	-	-	DEV 534.8 (DACROMET)	96	-	-
1110.31	BEAM ASS.	M16	16	90	-	-	DEV 534.8 (DACROMET)	12	-	-
1110.32	BEAM ASS.	M16	16	90	-	-	DEV 534.8 (DACROMET)	12	-	-
1110.33	BEAM ASS.	M16	16	90	-	-	DEV 534.8 (DACROMET)	24	-	-

NOTES:  
 1- ALL DIMENSIONS ARE IN MILLIMETER.  
 2- ALL PARTS SHALL PAINTED ACCORDING TO E1027-DMF-VQ-DC-PRO-024  
 3- BOLTS & NUTS & WASHERS SHALL BE DACROMET IN ACCORDANCE WITH ASTM - A153 OR EN ISO 1461  
 4- WELD: CONTINUOUS WELD.  
 MIN. HEIGHT OF FILLET WELD = 0.7 x MIN. THK.  
 < MAX. THK. ; IF MAX. THK < 7mm  
 < MAX. THK - 1.5 ; IF MAX. THK > 7mm

TOLERANCES			
THE FOLLOWING VALUES ARE APPLICABLE TO THE DIMENSIONS THAT ARE NOT PROVIDED WITH TOLERANCES ON DRAWING			
NOMINAL DIMENSIONS PER MILLIMETER STEPS	0	201	801
	200	800	2000
	5000	>	>
TOLERANCES	±	2	3
		5	6
		7	7
TOLERANCE ON CENTER DISTANCES ± 1.5			
THE TOLERANCES SHOWN HERE ARE NOT CUMULATIVE			

General Arrangement Drawing	1158-A01-1000-00	E1027-DMF-VQ-ME-DWG-003
Bundle Frame Drawing	1158-A01-2400-00	E1027-DMF-VQ-ME-DWG-007
Plenum Drawing	1158-A01-5110-00	E1027-DMF-VQ-ME-DWG-011
Header Walkway Drawing	1158-A01-1200-00	E1027-DMF-VQ-ST-DWG-014
Ladder Drawing	1158-A01-1520-00	E1027-DMF-VQ-ST-DWG-015

REV	DATE	DESCRIPTION	DRAWN BY	CHECKED BY	APPROVED BY	FINAL APPROVED BY
R2	12/28/2024	ISSUED FOR APPROVAL	JM.	JBL	JBL	AGHZ
RI	11/13/2024	ISSUED FOR APPROVAL	JM.	JBL	JBL	AGHZ
R0	09/01/2024	ISSUED FOR APPROVAL	JM.	JBL	JBL	AGHZ



PROJECT :  
 AIR COOLER FOR  
 Toase-eh Park Sanati Gohar Ofogh Petrochemical Co.  
 Steel Structure Drawing  
 1158-A01-100-00

DWG. NO. E1027-DMF-VQ-ST-DWG-013  
 SCALE : NTS SIZE : A1 REV. : R2

THIS DOCUMENT IS A CONFIDENTIAL NATURE IS THE PROPERTY OF DAMAFIN AND SHALL NOT BE REPRODUCED IN ANY MANNER, NOR USED FOR ANY PURPOSE WHAT SO EVER, EXCEPT BY WRITTEN PERMISSION OF DAMAFIN.

Factory : Km 14 special Karaj road