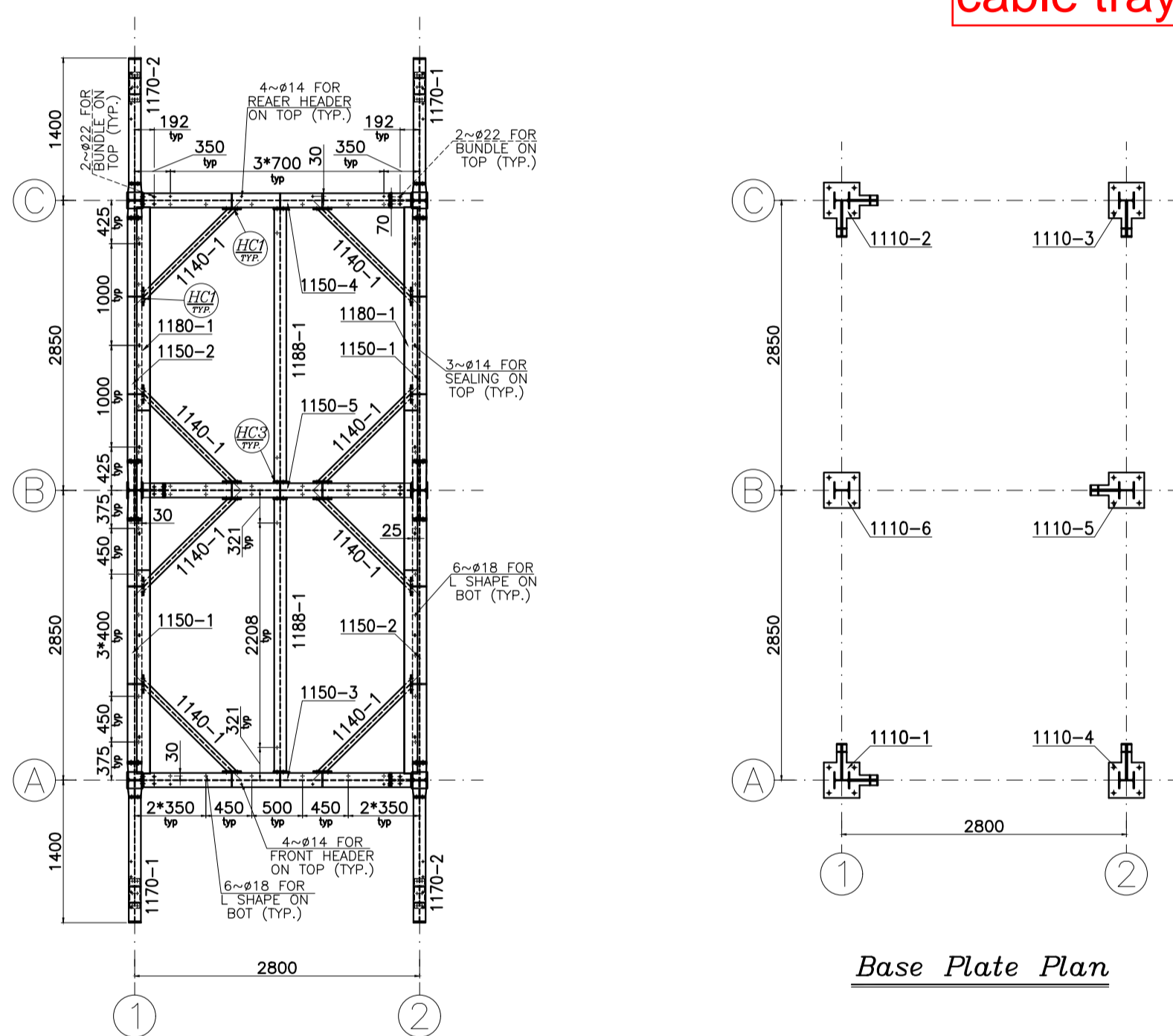
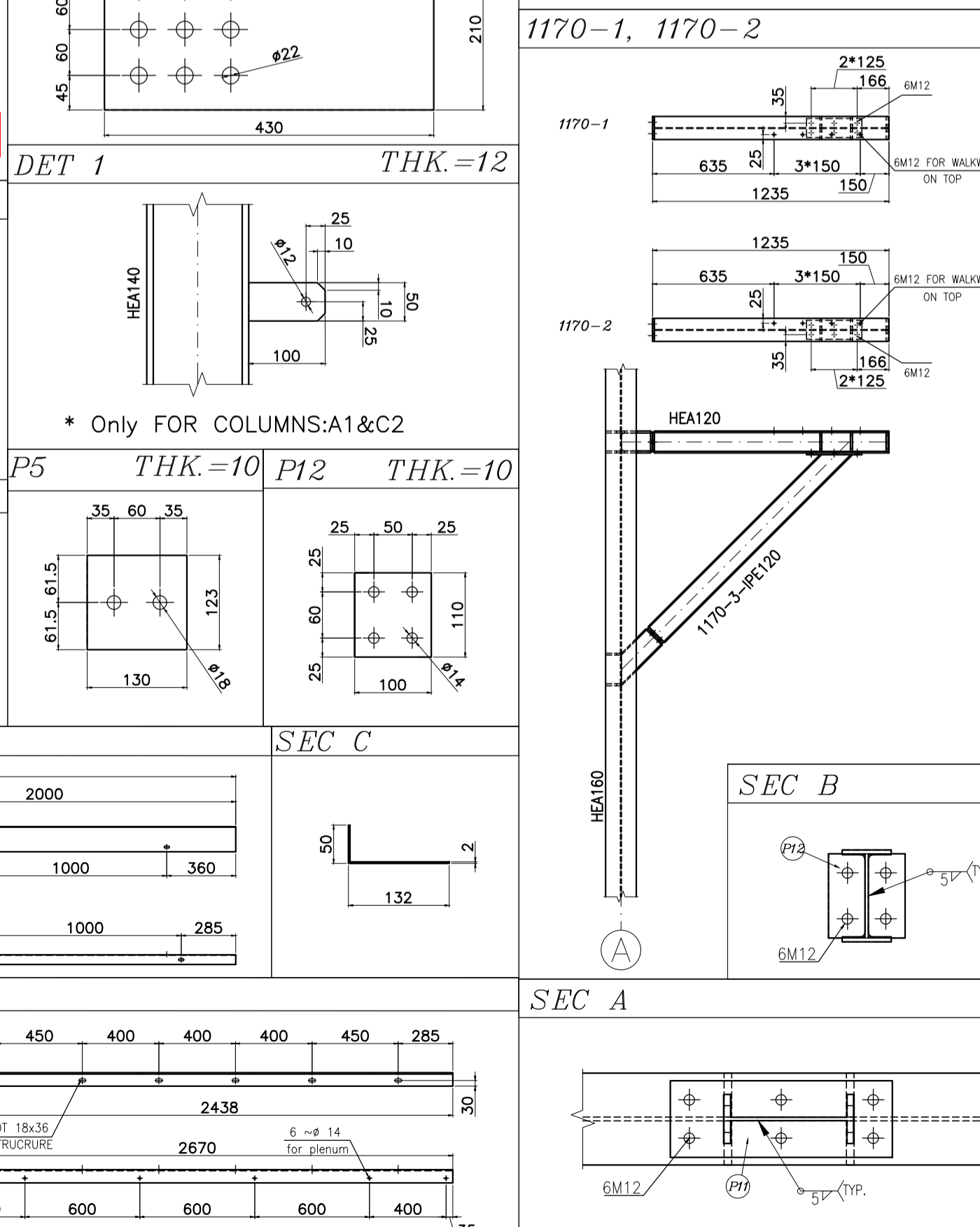
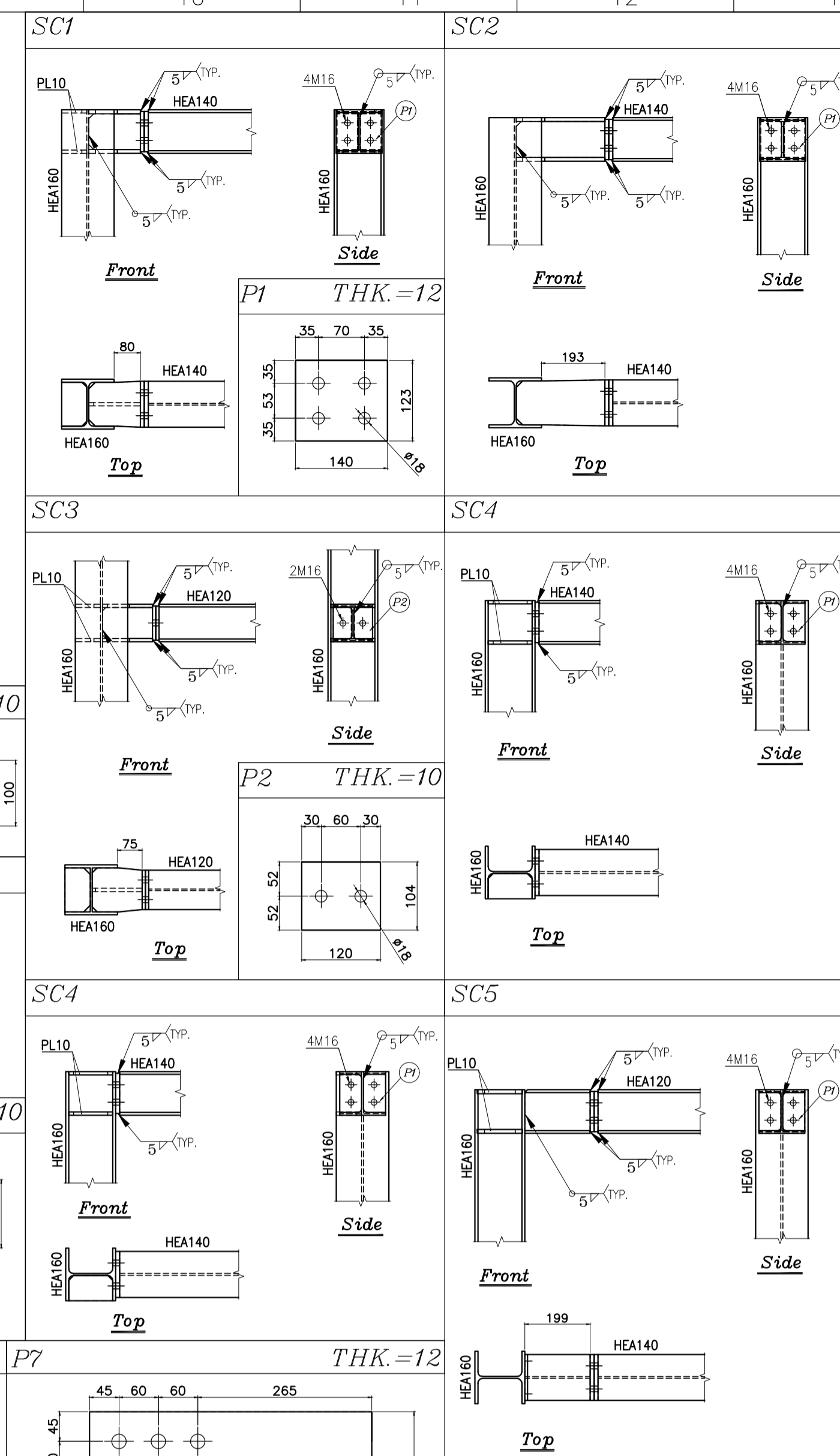
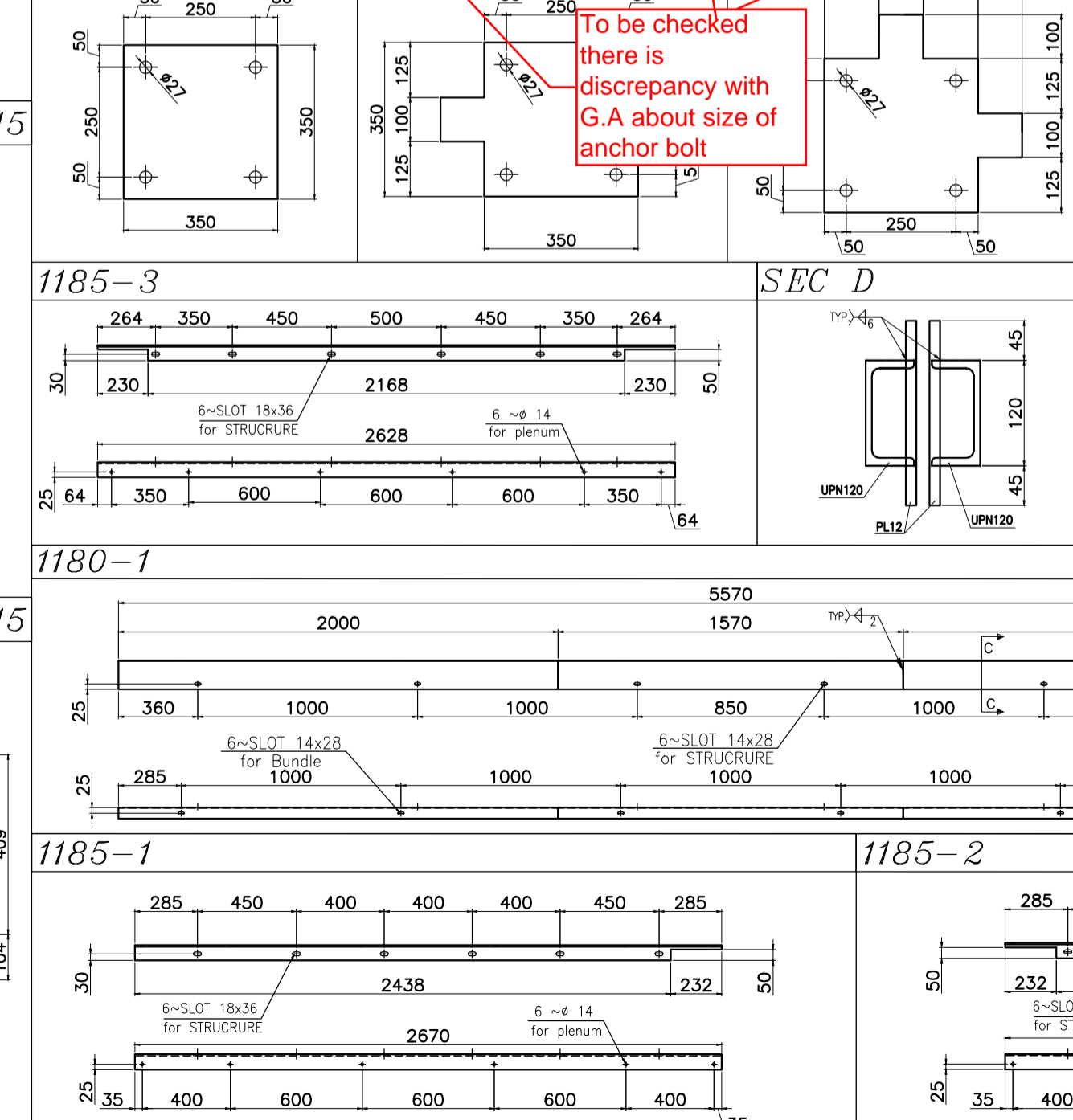
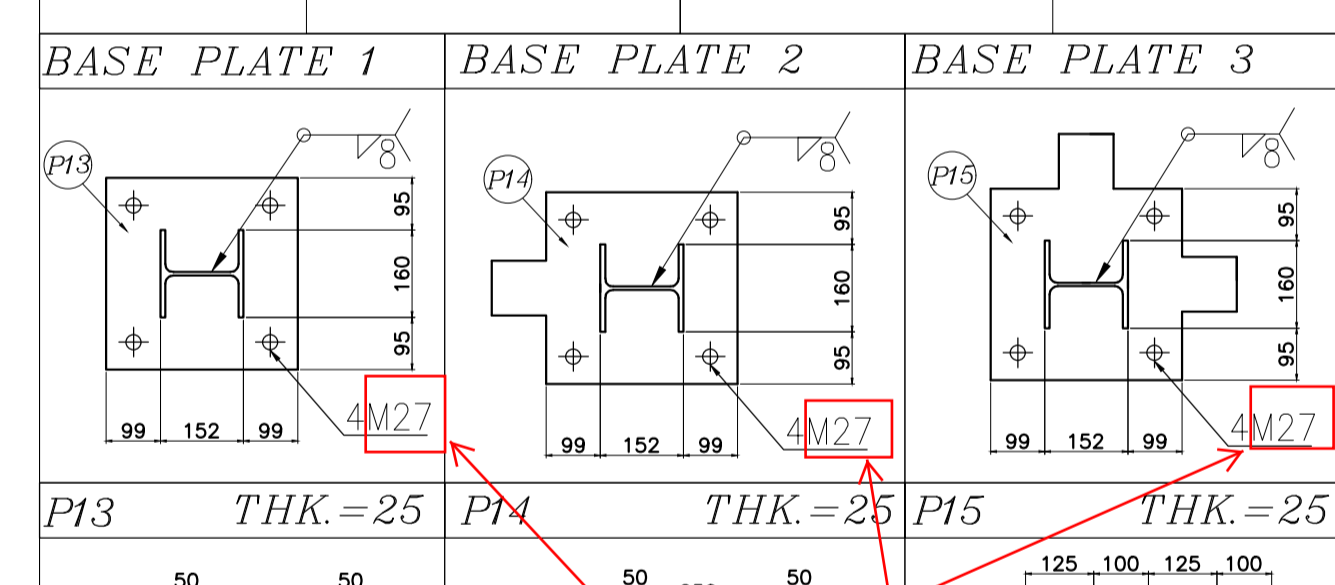
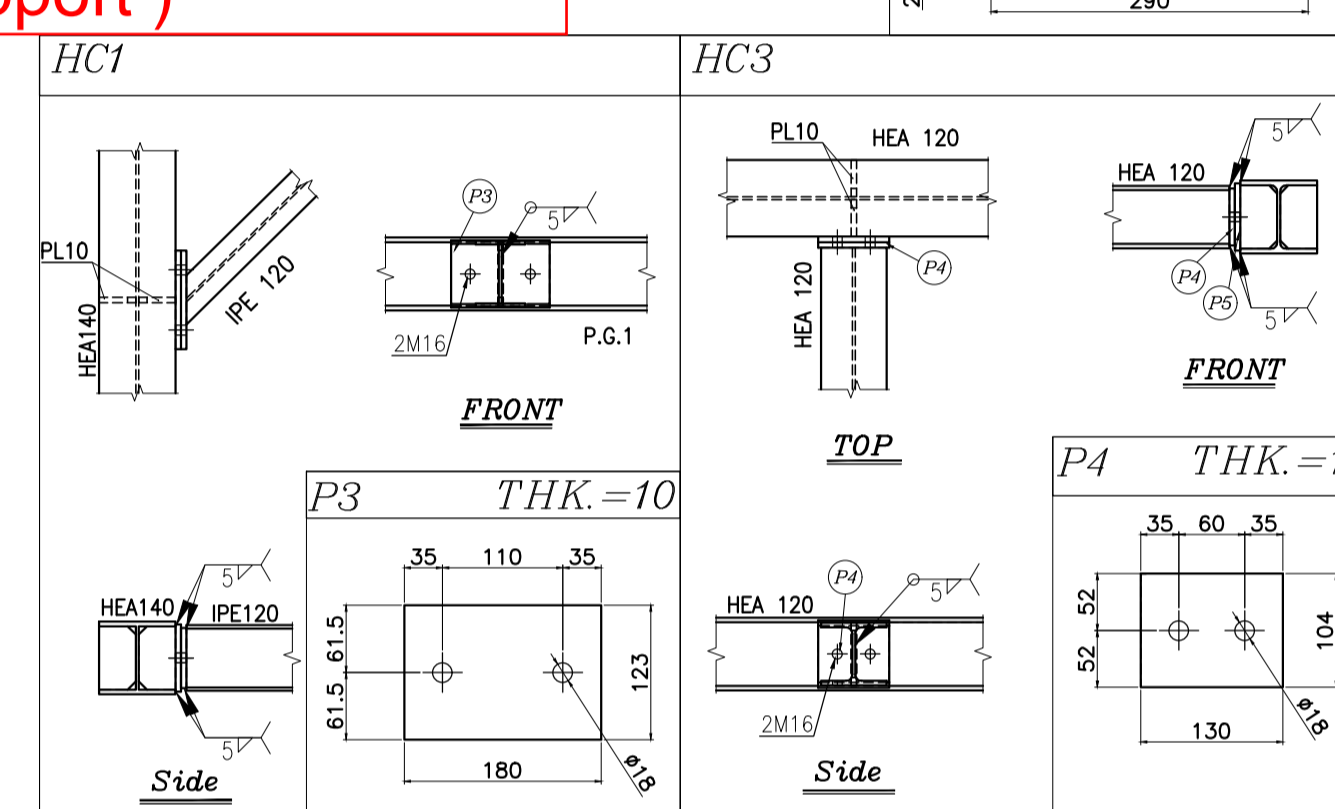


Please specify the supports for piping & cable tray as per related documents(location of pipe support and location of cable tray support)



Base Plate Plan



TOTAL UNITS-2										
PART NO.	DESCRIPTION	PROFILE	DIA (mm)	LENGTH (mm)	WIDTH (mm)	THK (mm)	MATERIAL	QTY.	UNIT WEIGHT (kg)	TOTAL WEIGHT (kg)
1110-1	COLUMN ASS.	HEA160	8000	-	-	-	ST-37(PAINTED)	1	247.3	247.3
1110-2	COLUMN ASS.	HEA160	5000	-	-	-	ST-37(PAINTED)	1	246.8	246.8
1110-3	COLUMN ASS.	HEA160	5000	-	-	-	ST-37(PAINTED)	1	251.8	251.8
1110-4	COLUMN ASS.	HEA160	5000	-	-	-	ST-37(PAINTED)	1	250.5	250.5
1110-5	COLUMN ASS.	HEA160	8000	-	-	-	ST-37(PAINTED)	1	271.4	271.4
1110-6	COLUMN ASS.	HEA160	5000	-	-	-	ST-37(PAINTED)	1	269.6	269.6
1140-1	HORIZONTAL BRACING ASS.	IPE120	1388	-	-	-	ST-37(PAINTED)	8	16.4	131.2
1150-1	BEAM ASS.	HEA140	2303	-	-	-	ST-37(PAINTED)	2	67.5	135
1150-2	BEAM ASS.	HEA140	2303	-	-	-	ST-37(PAINTED)	2	67.5	135
1150-3	BEAM ASS.	HEA140	2437	-	-	-	ST-37(PAINTED)	1	71.1	71.1
1150-4	BEAM ASS.	HEA140	2437	-	-	-	ST-37(PAINTED)	1	71.1	71.1
1150-5	BEAM ASS.	HEA140	2437	-	-	-	ST-37(PAINTED)	1	75.8	75.8
1160-1	BRACING ASS.	UPN120	4934	-	-	-	ST-37(PAINTED)	8	97.2	777.6
1160-2	BRACING ASS.	UPN120	4934	-	-	-	ST-37(PAINTED)	6	96.9	581.4
1170-1	WALKWAY SUPPORT ASS.	HEA120	1238	-	-	-	ST-37(PAINTED)	2	27.9	55.8
1170-2	WALKWAY SUPPORT ASS.	HEA120	1238	-	-	-	ST-37(PAINTED)	2	27.9	55.8
1170-3	WALKWAY SUPPORT ASS.	IPE120	1439	-	-	-	ST-37(PAINTED)	4	17.5	70
1180-1	SEALING ASS.	PLATE	8570	182	2	-	ST-37(PAINTED)	2	15.7	31.4
1181-1	L SHAPE PLENUM	L70*7	2670	-	-	-	ST-37(PAINTED)	2	19.7	39.4
1181-2	L SHAPE PLENUM	L70*7	2670	-	-	-	ST-37(PAINTED)	2	19.7	39.4
1181-3	L SHAPE PLENUM	L70*7	2628	-	-	-	ST-37(PAINTED)	4	19.4	77.6
1181-4	TIE ROD BEAM ASS.	HEA120	2690	-	-	-	ST-37(PAINTED)	2	55.2	110.4
TOTAL WEIGHT (kg)									3995.4	

LIST OF BOLTS & NUTS & WASHERS FOR 1 UNIT										
PART NO.	DESCRIPTION	PROFILE	DIA (mm)	LENGTH (mm)	WIDTH (mm)	THK (mm)	MATERIAL	QTY.	UNIT WEIGHT (kg)	TOTAL WEIGHT (kg)
1190-1	for BEAM ASS.	M16	90	-	-	-	DIN 934.8 (DACROMET)	56	-	-
1190-2		M16	-	-	-	-	DIN 934.8 (DACROMET)	56	-	-
1190-3		A17	-	-	-	-	DIN 125A-ST (DACROMET)	112	-	-
1190-4		M20	70	-	-	-	DIN 934.8 (DACROMET)	126	-	-
1190-5		M20	-	-	-	-	DIN 934.8 (DACROMET)	126	-	-
1190-6	for BRACING ASS.	A21	-	-	-	-	DIN 125A-ST (DACROMET)	252	-	-
1190-7		M16	45	-	-	-	DIN 934.8 (DACROMET)	154	-	-
1190-8		M16	-	-	-	-	DIN 934.8 (DACROMET)	154	-	-
1190-9		A17	-	-	-	-	DIN 125A-ST (DACROMET)	308	-	-
1190-10	for HORIZONTAL BRACING ASS.	M16	45	-	-	-	DIN 934.8 (DACROMET)	32	-	-
1190-11		M16	-	-	-	-	DIN 934.8 (DACROMET)	32	-	-
1190-12		A17	-	-	-	-	DIN 125A-ST (DACROMET)	64	-	-
1190-13		M16	45	-	-	-	DIN 934.8 (DACROMET)	8	-	-
1190-14		M16	-	-	-	-	DIN 934.8 (DACROMET)	8	-	-
1190-15	for WALKWAY SUPPORT ASS.	A17	-	-	-	-	DIN 125A-ST (DACROMET)	16	-	-
1190-16		M12	40	-	-	-	DIN 934.8 (DACROMET)	40	-	-
1190-17		M12	-	-	-	-	DIN 934.8 (DACROMET)	40	-	-
1190-18		A13	-	-	-	-	DIN 125A-ST (DACROMET)	80	-	-
1190-19	for TIE ROD BEAM ASS.	M16	45	-	-	-	DIN 934.8 (DACROMET)	8	-	-
1190-20		M16	-	-	-	-	DIN 934.8 (DACROMET)	8	-	-
1190-21		A17	-	-	-	-	DIN 125A-ST (DACROMET)	16	-	-
1190-22		M16	45	-	-	-	DIN 934.8 (DACROMET)	48	-	-
1190-23	for L SHAPE PLENUM ASS.	M16	-	-	-	-	DIN 934.8 (DACROMET)	48	-	-
1190-24		A17	-	-	-	-	DIN 125A-ST (DACROMET)	96	-	-
1190-25	for SEALING ASS.	M12	30	-	-	-	DIN 934.8 (DACROMET)	12	-	-
1190-26		M12	-	-	-	-	DIN 934.8 (DACROMET)	12	-	-
1190-27		A13	-	-	-	-	DIN 125A-ST (DACROMET)	24	-	-

NOTES:
 1- ALL DIMENSIONS ARE IN MILLIMETER.
 2- ALL PARTS SHALL PAINTED ACCORDING TO E1027-DMF-VD-QC-PRO-024
 3- BOLTS & NUTS & WASHERS SHALL BE HOT DIP DACROMETE IN ACCORDANCE WITH ASTM - A153 OR EN ISO 1461
 4- WELD: CONTINUOUS WELD.
 MIN. HEIGHT OF FILLET WELD = 0.7 x MIN. THK.
 < MAX. THK. < 7mm
 < MAX. THK. > 7mm

TOLERANCES				
NOMINAL DIMENSIONS PER MILLIMETER STEPS	0	201	801	2001
±	0.2	0.3	0.5	0.7
±	0.2	0.3	0.5	0.7
TOLERANCE ON CENTER DISTANCES ± 1.5				
THE TOLERANCES SHOWN HERE ARE NOT CUMULATIVE				

General Arrangement Drawing	1158-A01-1000-00	E1027-DMF-VD-ME-DWG-003
Bundle Frame Drawing	1158-A01-2400-00	E1027-DMF-VD-ME-DWG-007
Plenum Drawing	1158-A01-5110-00	E1027-DMF-VD-ME-DWG-011
Header Walkway Drawing	1158-A01-1200-00	E1027-DMF-VD-ST-DWG-014
Ladder Drawing	1158-A01-1520-00	E1027-DMF-VD-ST-DWG-015

NO	DATE	ISSUED FOR APPROVAL	J.M.	J.B.L.	J.B.L.	A.G.H.Z.
REV		DESCRIPTION	DRAWN BY / CHECKED BY / APPROVED BY / FINAL APPROVED BY			

CLIENT: **ENBR TEKNOLOJI**

PROJECT: AIR COOLER FOR Toase-eh Park Sanati Gohar Ofogh Petrochemical Co. Steel Structure Drawing 1158-A01-100-00

DWG. NO. E1027-DMF-VD-ST-DWG-013
 SCALE: NTS SIZE: A1 REV: R0

THIS DOCUMENT IS A CONFIDENTIAL NATURE IS THE PROPERTY OF DAMAFIN AND SHALL NOT BE REPRODUCED IN ANY MANNER, NOR USED FOR ANY PURPOSE WHATSOEVER, EXCEPT BY WRITTEN PERMISSION OF DAMAFIN.

dt Damafin
 thermal technology