

THE UPPER FACE OF THESE BRACKET PARTS SHOULD BE FINISHED TO BE A PLANE PARALLEL TO THE UPPER FACE OF THE PIPES BEARING ON THE FRONT PART. (MAX. DEVIATION ± 1 mm)

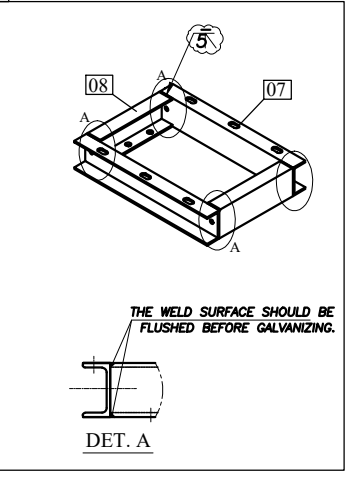
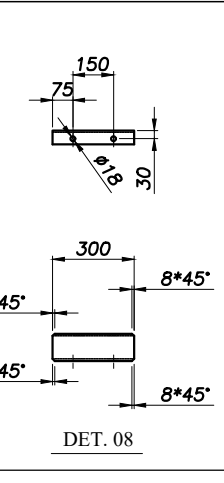
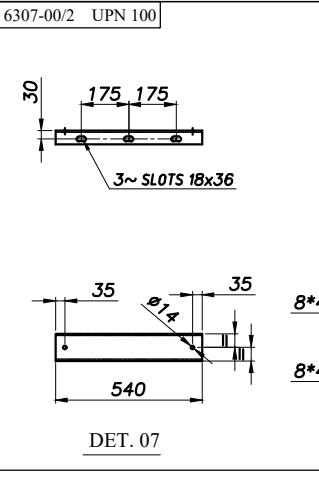
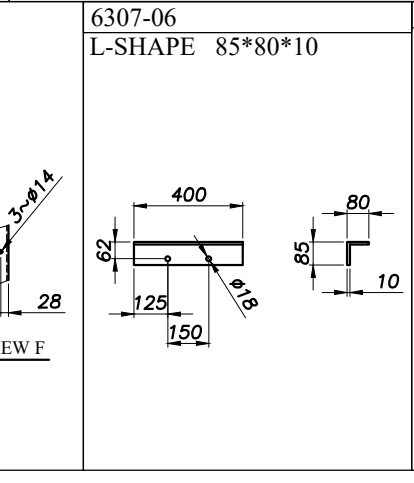
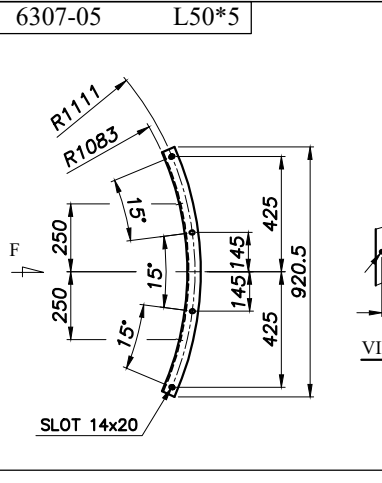
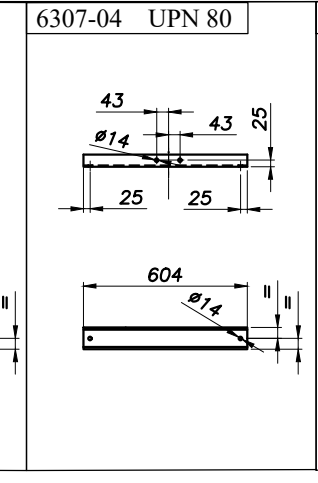
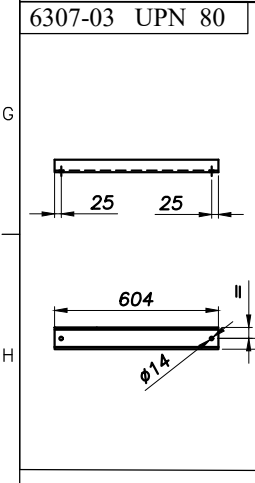
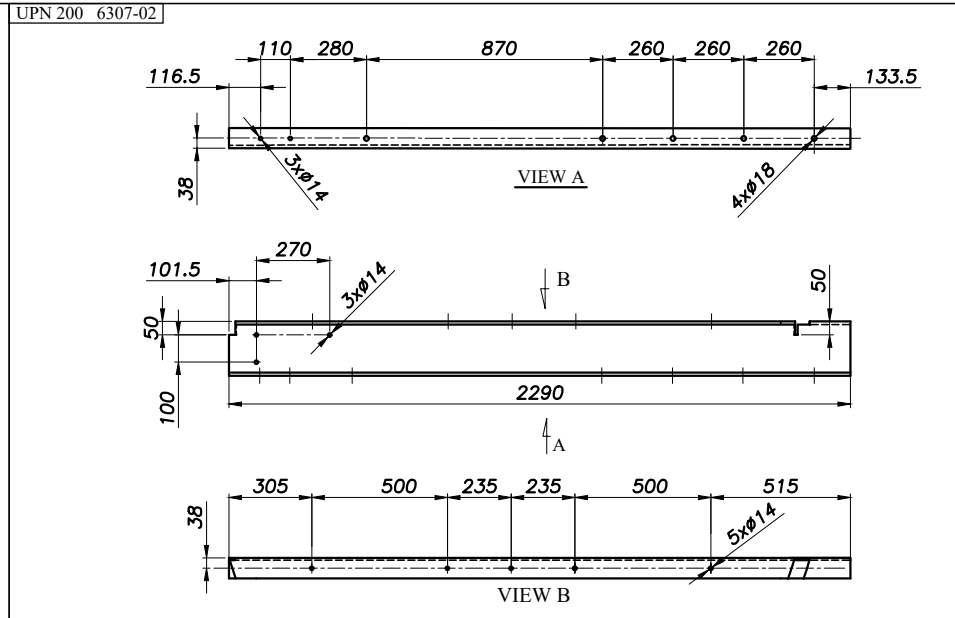
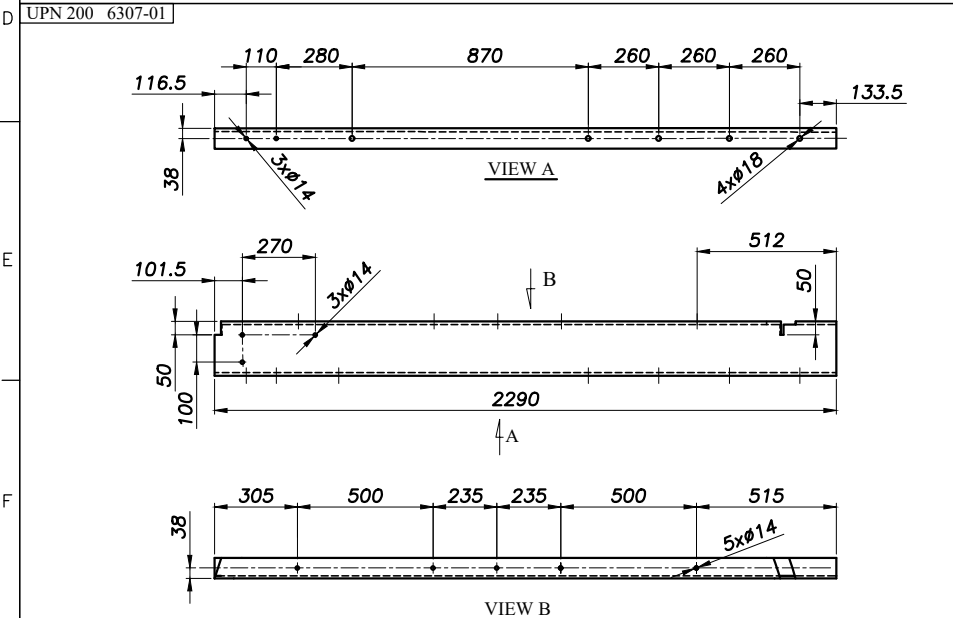
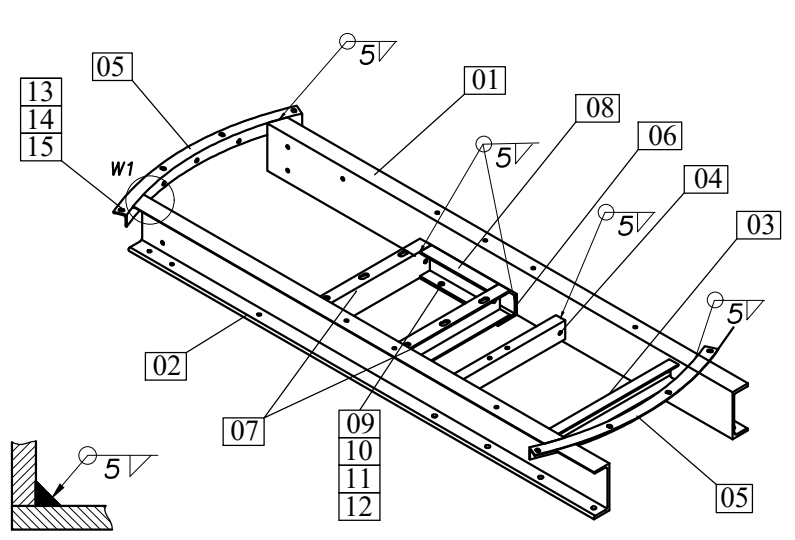
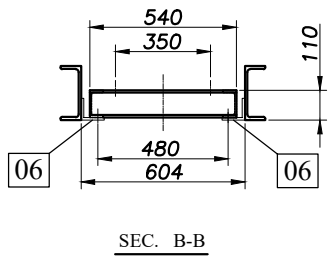
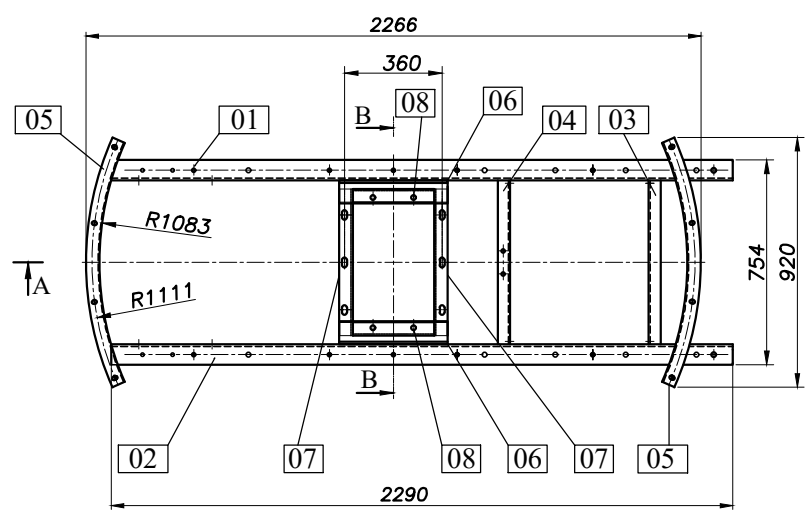
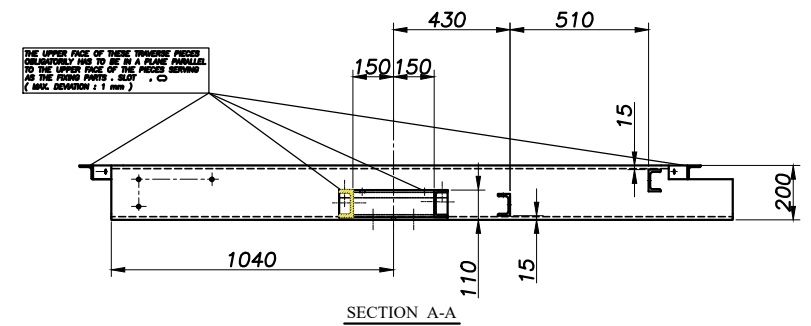
NOTES :
 1- ALL DIMENSIONS ARE IN MILLIMETERS.
 2- BOLTS, NUTS, WASHERS, THREADS, PARTS INCLUDES THREADS SHALL BE AS PER PROJECT SPECIFICATION.
 3- COATING SHALL BE AS PER PROJECT SPECIFICATION.
 4- MIN HEIGHT OF FILLET WELD=0.7*MIN THK.

TOLERANCES
 THE FOLLOWING VALUES ARE APPLICABLE TO THE DIMENSIONS THAT ARE NOT PROVIDED WITH TOLERANCES ON DRAWING

NOMINAL DIMENSIONS FOR MILLIMETER STEPS	0	801	5001
TOLERANCES ±	1	2	3
TOLERANCE ON CENTER DISTANCES ±	0.5		

THE TOLERANCES SHOWN HERE ARE NOT CUMULATIVE

PART LIST		DIA. (mm)	LENGTH (mm)	WIDTH (mm)	THK. (mm)	MATERIAL	QTY.	Unit Weight	Total Weight	REV.
6307-00	SUPPORT MECHANISM INCLUDING:	-	-	-	-	-	4	151	606	
6307-00/1	SUPPORT MECHANISM FRAME ASSEMBLY:	-	-	-	-	-	1	142	142	
6307-01	UPN 200	-	2290	-	-	st-37(Galv.)	1	58	58	
6307-02	UPN 200	-	2290	-	-	st-37(Galv.)	1	58	58	
6307-03	UPN 80	-	604	-	-	st-37(Galv.)	1	5	5	
6307-04	UPN 80	-	604	-	-	st-37(Galv.)	1	5	5	
6307-05	L50*5	-	920	-	-	st-37(Galv.)	2	3	7	
6307-06	L- SHAPE 85*80*10	-	400	-	10	st-37(Galv.)	2	5	9	
6307-00/2	BEARING BLOCK SUPPORT ASSEMBLY:	-	-	-	-	-	1	18	18	
6307-07	UPN 100	-	540	-	-	st-37(Galv.)	2	6	11	
6307-08	UPN 100	-	300	-	-	st-37(Galv.)	2	3	6	
BOLT & NUT & WASHER INCLUDING :										
6307-09	BOLT FOR CONNECTING B.B. SUPPORT TO SUPPORT MECHA	M16	50	-	-	DIN-933-CL.8.8(Dacromet)	4			
6307-10	NUT	M16	-	-	-	DIN-934-CL.8(Dacromet)	4			
6307-11	WASHER	A17	-	-	-	DIN-125A-ST(Dacromet)	4			
6307-12	TAPER WASHER	-	-	-	-	DIN-434-18-ST-8%(Dacromet)	4			
6307-13	BOLT FOR CONNECTING SUPPORT MECHANISM TO FAN RING	M12	40	-	-	DIN-933-CL.8.8(Dacromet)	8			
6307-14	NUT	M12	-	-	-	DIN-934-CL.8(Dacromet)	8			
6307-15	WASHER	A13	-	-	-	DIN-125A-ST(Dacromet)	16			



* FOR MORE DETAILS FOR EACH COMPONENT OF AIR COOLER REFER TO BELOW DRAWING & DOCUMENTS.

REFERENCED DWG&DOC.		
TITLE	VENDOR DOCUMENT NO.	CLIENT DOCUMENT NO.
General Arrangement Drawing	1158-A01-1000-00	EI027-DMF-VD-ME-DWG-003
Fan Drive Assembly Drawing	1158-A01-6000-00	EI027-DMF-VD-ME-DWG-008
Plenum Drawing	1158-A01-5110-00	EI027-DMF-VD-ME-DWG-011
Fan Ring Drawing	1158-A01-5067-00	EI027-DMF-VD-ME-DWG-009
Surface Preparation and Painting Procedure for Air Cooler	1158-A01-QS01-00	EI027-DMF-VD-QC-PRO-024

R1	08/20/2024	ISSUED FOR APPROVAL	F.SZ	F.A.	J.B.L	A.GHZ
R0	08/10/2024	ISSUED FOR APPROVAL	F.SZ	F.A.	J.B.L	A.GHZ
REV	DATE	DESCRIPTION	DRAWN BY	CHECKED BY	APPROVED BY	FINAL APPROVED BY

CLIENT: **ENBR TEKNOLOJİ**

PROJECT: AIR COOLER FOR Toase-che Park Sanati Gohar Ofogh Petrochemical Co. Support Mechanism Drawing 1158-A01-6037-00

CONTRACTOR: **dt Damafin thermal technology**
 Factory : Km 14 special Karaj road

DWG. NO. EI027-DMF-VD-ME-DWG-010
 SCALE : N.T.S. SIZE : A3 REV. : R1

THIS DOCUMENT IS A CONFIDENTIAL NATURE IS THE PROPERTY OF DAMAFIN AND SHALL NOT BE REPRODUCED IN ANY MANNER, NOR USED FOR ANY PURPOSE WHAT SO EVER, EXCEPT BY WRITTEN PERMISSION OF DAMAFIN.