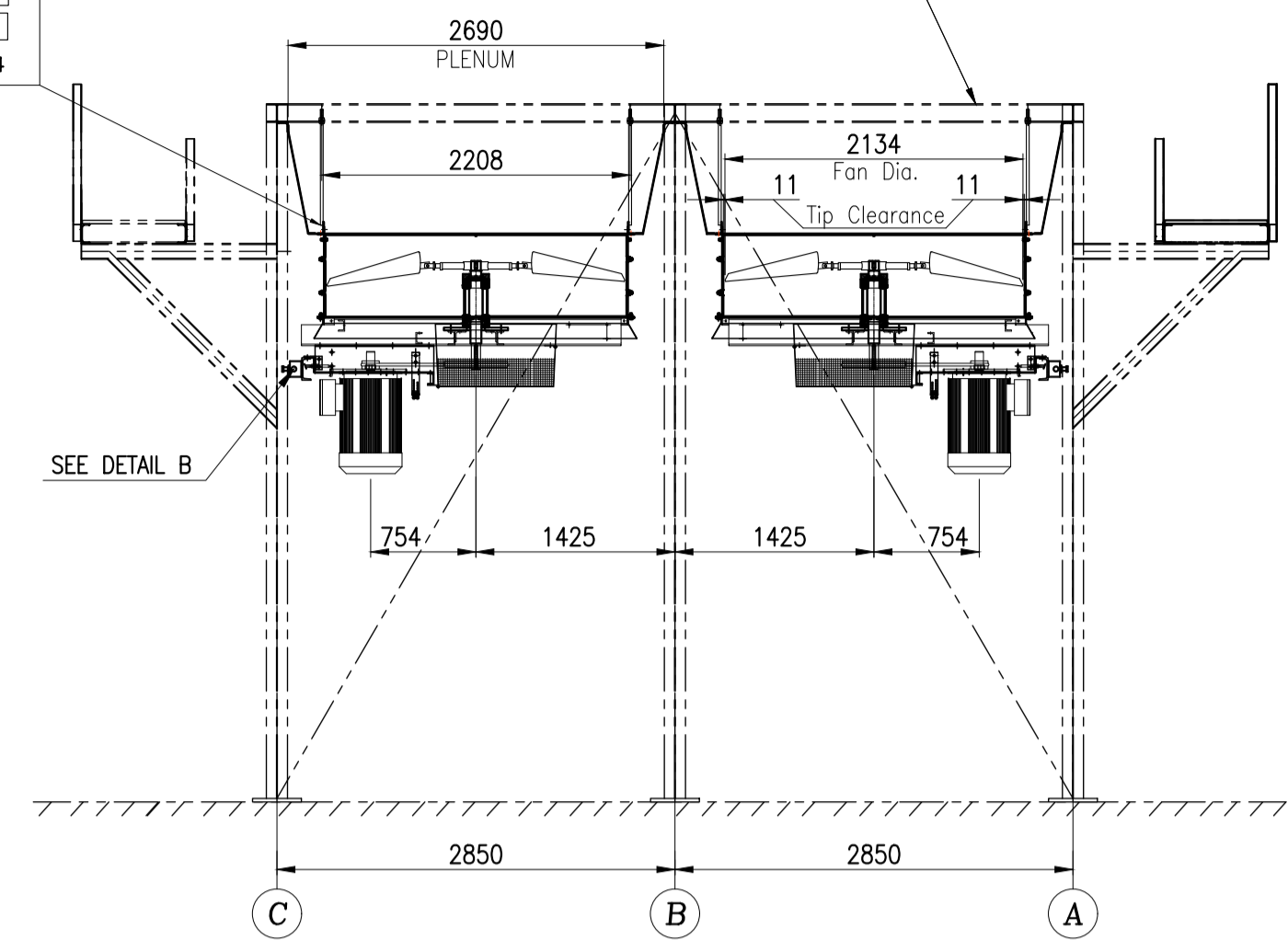
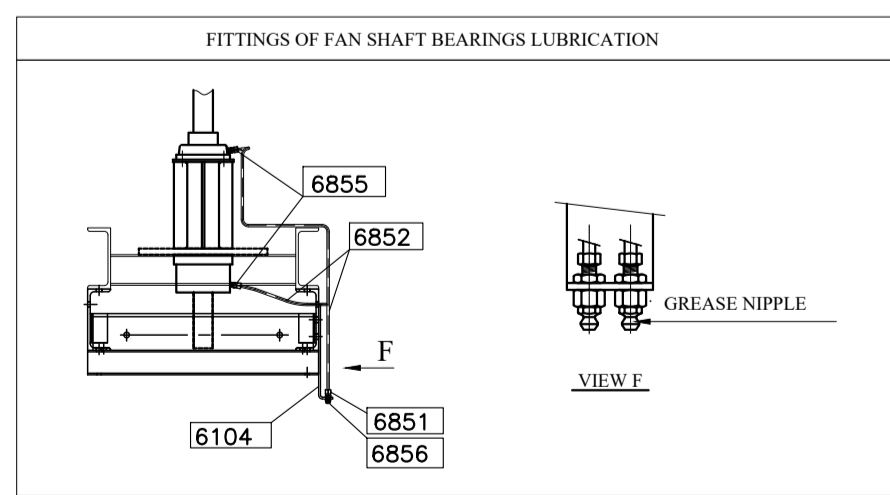
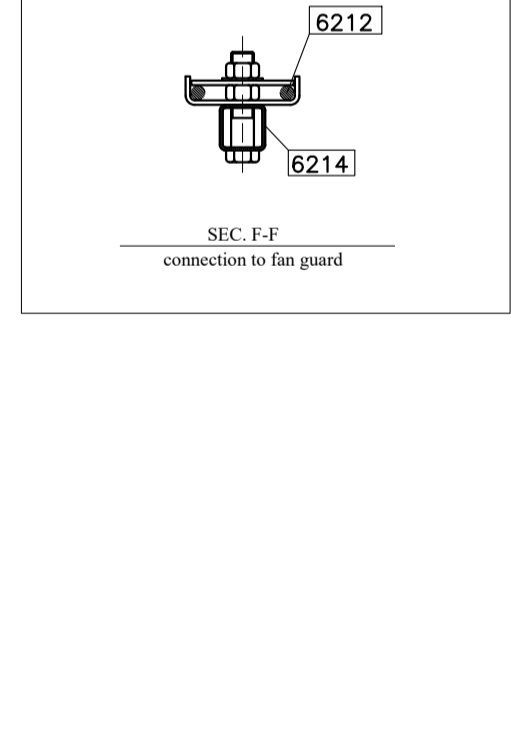
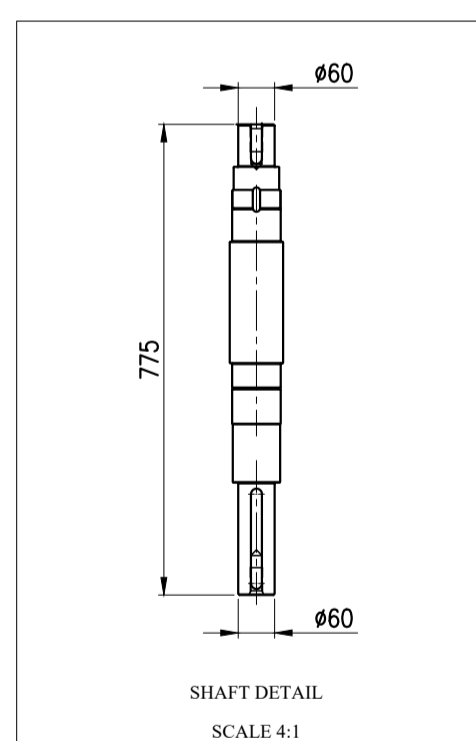
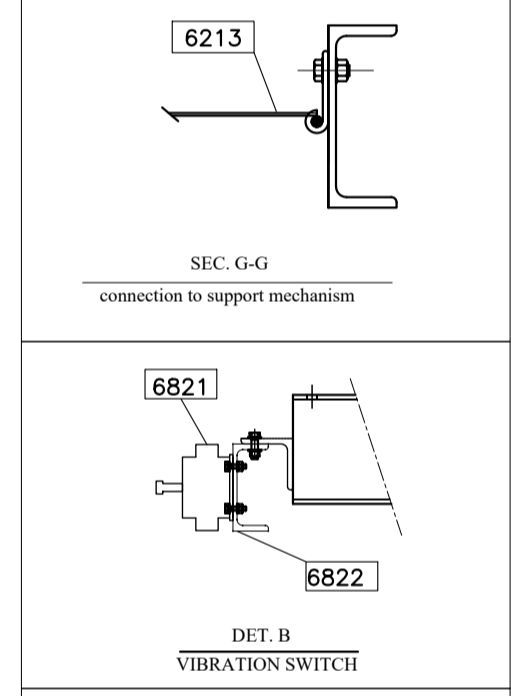
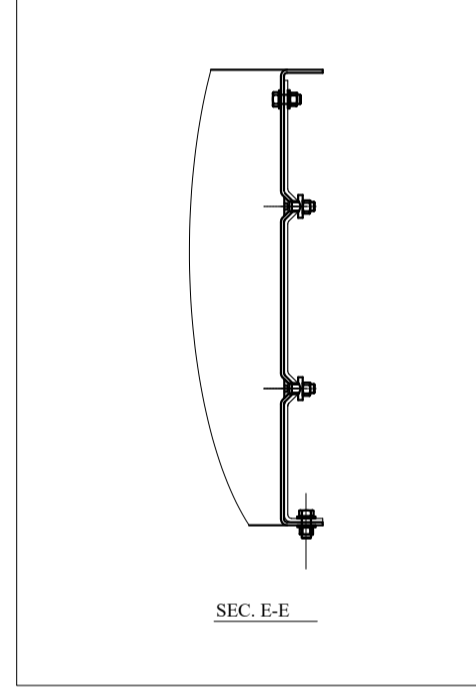
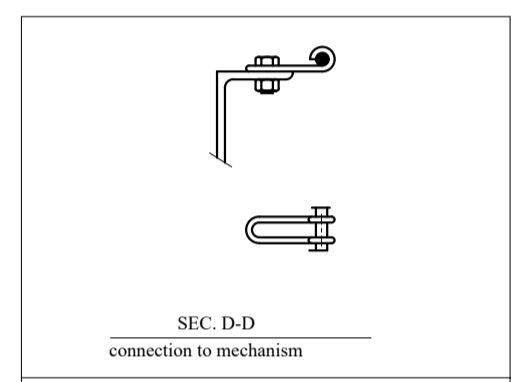
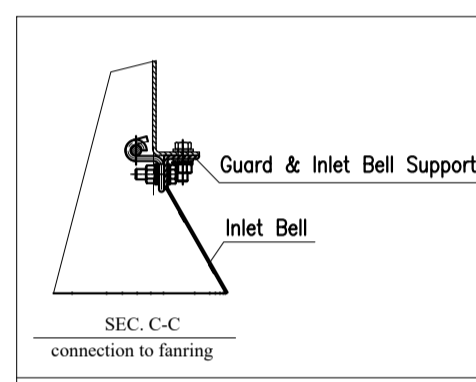
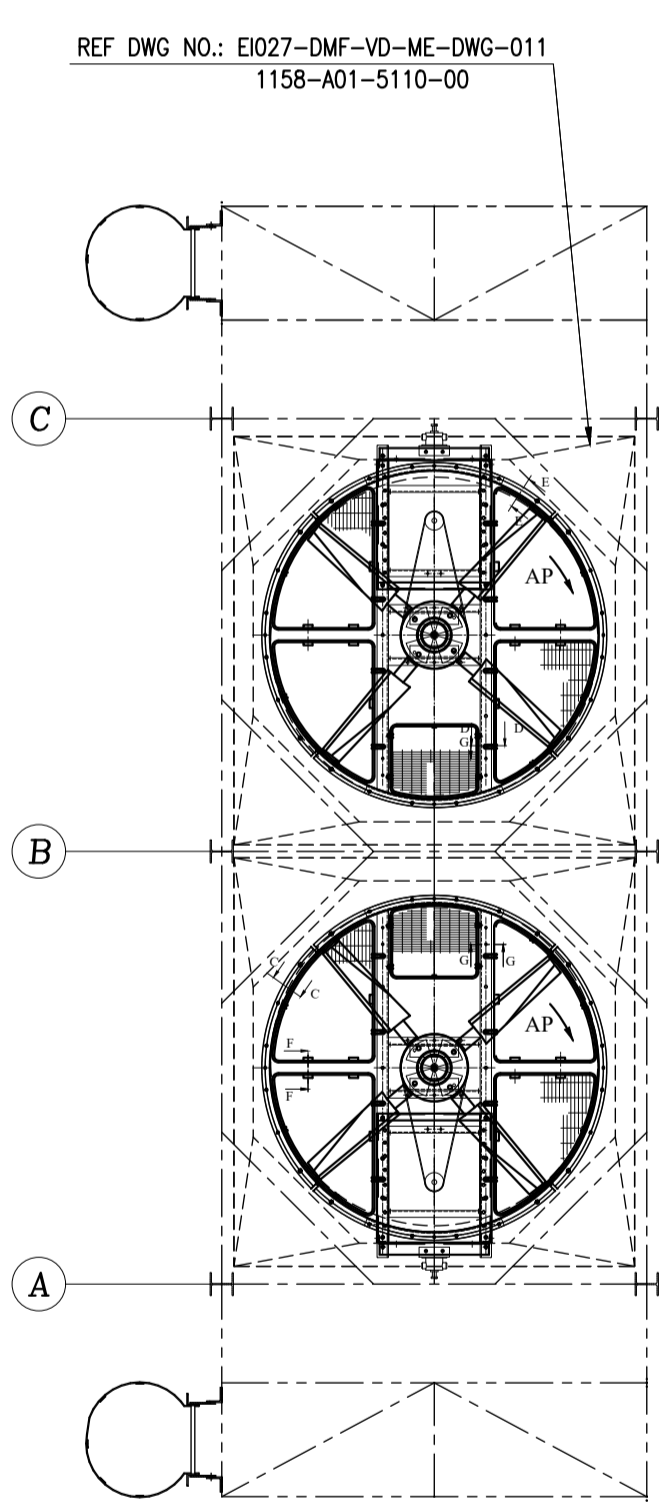


FRONT VIEW
CL. A-C

* THIS DIMENSION WILL BE FINALIZED AFTER APPROVED OF MOTOR DATA SHEET



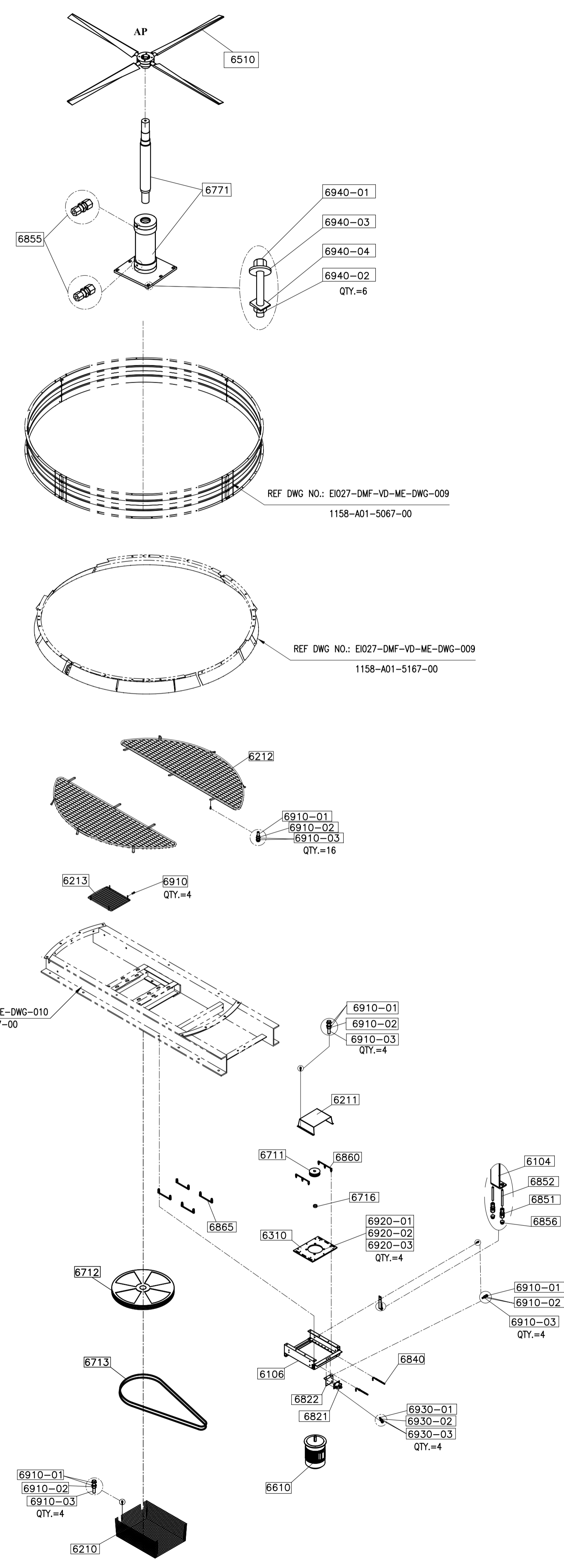
SIDE VIEW



NOTE :
 1- ALL DIMENSION ARE IN MILLIMETERS.
 2- HOT DIP GALVANIZING SHALL BE DONE AS PER ASTM-123/ISO 1461.
 3- BOLTS, NUTS, WASHERS, THREADS, PARTS INCLUDES THREADS SHALL BE PROJECT SPECIFICATION DOC. NO. E1027-DMF-VD-QC-PRO-024
 4- DETAILS OF THE PARTS NO. 6822-00 & 6310-00 & 6716-00 WILL BE ADDED AFTER THE MANUFACTURER HAS FINALIZED.

* FOR MORE DETAILS FOR EACH COMPONENT OF AIR COOLER REFER TO BELOW DRAWING & DOCUMENTS.		
REFERENCED DWG&DOC.		
TITLE	VENDOR DOCUMENT NO.	CLIENT DOCUMENT NO.
General Arrangement Drawing	1158-A01-1000-00	E1027-DMF-VD-ME-DSH-016
Plenum Drawing	1158-A01-5110-00	E1027-DMF-VD-ME-DWG-011
Fan Ring Drawing	1158-A01-5067-00	E1027-DMF-VD-ME-DWG-009
Support Mechanism Drawing	1158-A01-6307-00	E1027-DMF-VD-ME-DWG-010
Steel Structure Drawing	1158-A01-1100-00	E1027-DMF-VD-ST-DWG-013
Surface Preparation and Painting Procedure	1158-A01-QS01-00	E1027-DMF-VD-QC-PRO-024

REFERENCE DSH		
TITLE	VENDOR DOCUMENT NO.	CLIENT DOCUMENT NO.
Axial Fan Data Sheet	1158-A01-6510-00	E1027-DMF-VD-ME-DSH-016
Electrical Motor Data Sheet	1158-A01-6610-00	E1027-DMF-VD-EL-DSH-017
Belt & Pulley Data Sheet	1158-A01-6710-00	E1027-DMF-VD-ME-DSH-018
Vibration Switch Data Sheet	1158-A01-6800-00	E1027-DMF-VD-IN-DSH-019



PART NO.	DESCRIPTION	DIMENTION	MATERIAL	QTY.	UNIT WEIGHT (Kg)	TOTAL WEIGHT (Kg)	REV.
6000-00	FAN DRIVE ASSEMBLY FOR TWO UNITS	-	-	4	-	906	
6000-00	FAN DRIVE ASSEMBLY FOR ONE UNITS	-	-	2	-	453	
EACH FAN DRIVE WITH AP FAN FOR ONE SET INCLUDES :				1AP	226.5	226.5	
6103-00	TIE BEAM	REF. SHEET 2	ST-37(Hot Dip Galv.)	2	2.5	5	
6104-00	LUBRICATION PIPING SUPPORT	REF. SHEET 2	ST-37(Hot Dip Galv.)	1	1	1	
6106-00	MOTOR SUPPORTING STRUCTURE	REF. SHEET 2	ST-37(Hot Dip Galv.)	1	61	61	
6210-00	DRIVEN PULLEY GUARD	REF. SHEET 2	ST-37(Hot Dip Galv.)	1	10	10	
6211-00	DRIVER PULLEY GUARD	REF. SHEET 2	ST-37(Hot Dip Galv.)	1	8	8	
6212-00	FAN GUARD, 7(FI)			20	-	-	
6212-00(1)	TRIANGULAR MESH			1	5	5	
6212-00(2)	TRIANGULAR MESH			1	5	5	
6212-00(3)	TRIANGULAR MESH	REF. SHEET 2	ST-37(Hot Dip Galv.)	1	5	5	
6212-00(4)	TRIANGULAR MESH			1	5	5	
6213-00	DRIVE SUPPORTING STRUCTURE GUARD, 7(FI)	REF. SHEET 2	ST-37(Hot Dip Galv.)	1	3	3	
6214-00	FAN GUARD SUPPORT	REF. SHEET 2	ST-37(Hot Dip Galv.)	2	3	5	
6310-00	MOTOR PLATE	REF. SHEET 2	ST-37(Hot Dip Galv.)	1	-	-	
6510-00	FAN UNIT DIA (7 FI) BLADE NO=4	REF. DSH.	Manufacturer standard	1	-	-	
6610-00	MOTOR (7.5 KW -ELECTRIC-Exdb./IB-T4-IP55)	REF. DSH.	Manufacturer standard	1	-	-	R4
6711-00	DRIVER PULLEY PT106SPA2/PB1106SPA2	REF. DSH.	G20/ ASTM A48-94a	1	-	-	
6712-00	DRIVEN PULLEY PT400SPA2/PB1400SPA2	REF. DSH.	G20/ ASTM A48-94a	1	-	-	
6713-00	BELT CAPXPA2332 CD-754.3	REF. DSH.	Manufacturer standard	2	-	-	
6716-00	SPACER BETWEEN MOTOR&PULLEY	REF. SHEET 2	ST-37(Galv.)	1	0.3	0.3	
6771-00	SHAFT & BEARING BLOCK	REF. DSH.	Manufacturer standard	1	103	103	
6821-00	VIBRATION SWITCH(SAM)	REF. DSH.	Manufacturer standard	1	-	-	R4
6822-00	VIBRATION SWITCH SUPPORT (L. 100*10)	REF. SHEET 2	ST-37(Hot Dip Galv.)	1	2	2	R4
6840-00	TENSIONING BOLT	M16	C.S CL. 8.8(GALV J/A36)	2	1	2	
6851-00	UNION FEMALE CONECTOR(1/8" NPT-8mm(TUBE))	REF. SHEET 2	S.S/304L	2	0.1	0.2	
6852-00	TUBE (OD=8 mm, ID=6)	4000	S.S/304L	1	-	-	
6855-00	UNION MALE CONECTOR(1/4" NPT-8mm(TUBE))	REF. DSH.	S.S/304L	2	-	-	
6856-00	GREASE NIPPLE (1/8" NPT)	REF. DSH.	S.S/304L	2	-	-	
6860-00	CLAMP	REF. SHEET 2	C.S(GALV J/A36)	2	1	2	
6865-00	CLAMP	REF. SHEET 2	C.S(GALV J/A36)	4	1	4	
BOLT & NUT & WASHER FOR ASSEMBLY PARTS AP FAN:				1SET	4SET		
6103-03	NUT FOR TIE BEAM	M16	DN 934 CL. 8 (Dacromet.)	4	16		
6103-04	WASHER	A17	DN 125 A17 S1 (Dacromet.)	4	16		
6106-05	BOLT FOR FAN GUARD SUPPORT	M16x40	DN 933 CL. 8.8 (Dacromet.)	6	24		
6106-06	NUT	M16	DN 934 CL. 8 (Dacromet.)	12	48		
6106-07	WASHER	A17	DN 125 A17 S1 (Dacromet.)	6	24		
6840-02	NUT FOR TENSIONING BOLT	M16	DN 934 CL. 8 (Dacromet.)	4	16		
6840-03	WASHER	A17	DN434-18-ST(8%) (Dacromet.)	2	8		
6840-04	WASHER	A17	DN 125 A17 S1 (Dacromet.)	2	8		
6860-02	BOLT FOR CLAMP	M16x55	DN 933 CL. 8.8 (Dacromet.)	6	24		
6860-03	NUT	M16	DN 934 CL. 8 (Dacromet.)	6	24		
6860-04	WASHER	A17	DN 125 A17 S1 (Dacromet.)	12	48		
6865-02	BOLT FOR CLAMP	M16x55	DN 933 CL. 8.8 (Dacromet.)	8	32		
6865-03	NUT	M16	DN 934 CL. 8 (Dacromet.)	16	64		
6865-04	WASHER	A17	DN 125 A17 S1 (Dacromet.)	16	64		
BOLT & NUT & WASHER FOR ASSEMBLY PART (FAN DRIVE TO PROJECT LACATION)				1SET	4SET		
BOLT & NUT & WASHER FOR ASSEMBLY PART AP OR AV FAN:				1SET	4SET		
6910-01	BOLT	M12x40	DN 933 CL. 8.8 (Dacromet.)	36	144		
6910-02	NUT	M12	DN 934 CL. 8 (Dacromet.)	36	144		
6910-03	WASHER	A13	DN 125 A17 S1 (Dacromet.)	72	288		
6920-01	BOLT FOR MOTOR TO MOTOR PLATE	M16*70	DN 933 CL. 8.8 (Dacromet.)	4	16		
6920-02	NUT	M16	DN 934 CL. 8 (Dacromet.)	4	16		
6920-03	WASHER	A17	DN 125 A17 S1 (Dacromet.)	4	16		
6930-01	BOLT FOR VIBRATION SWITCH SUPPORT	M8*30	DN 933 CL. 8.8 (Dacromet.)	4	16		
6930-02	NUT	M8	DN 934 CL. 8 (Dacromet.)	4	16		
6930-03	WASHER	A9	DN 125 A17 S1 (Dacromet.)	8	32		
6940-01	BOLT FOR BEARING BLOCK TO SUPPORT MECHANISM	M16x65	DN 933 CL. 8.8 (Dacromet.)	6	24		
6940-02	NUT	M16	DN 934 CL. 8 (Dacromet.)	6	24		
6940-03	WASHER	A17	DN 125 A17 S1 (Dacromet.)	6	24		
6940-04	WASHER	A17	DN434-18-ST(8%) (Dacromet.)	6	24		

REV	DATE	DESCRIPTION	DRAWN BY	CHECKED BY	APPROVED BY	FINAL APPROVED BY
R4	10/13/2024	ISSUED FOR APPROVAL	F.SZ	F.A	J.B.L	A.GHZ
R3	09/07/2024	ISSUED FOR APPROVAL	F.SZ	F.A	J.B.L	A.GHZ
R2	08/31/2024	ISSUED FOR APPROVAL	F.SZ	F.A	J.B.L	A.GHZ
R1	08/20/2024	ISSUED FOR APPROVAL	F.SZ	F.A	J.B.L	A.GHZ
R0	08/07/2024	ISSUED FOR APPROVAL	F.SZ	F.A	J.B.L	A.GHZ

CLIENT:

PROJECT :
AIR COOLER FOR
 Toase-che Park Sanati Gohar Ofogh Petrochemical Co.
 Fan Drive Assembly Drawing
 1158-A01-6000-00
 (SHEET 1 OF 2)

CONTRACTOR:

Factory : Km 14 special Karaj road

DWG. NO.	E1027-DMF-VD-ME-DWG-008
SCALE :	N.T.S.
SIZE :	A1
REV. :	R4

THIS DOCUMENT OF A CONFIDENTIAL NATURE IS THE PROPERTY OF DAMAFIN AND SHALL NOT BE REPRODUCED IN ANY MANNER, NOR USED FOR ANY PURPOSE WHATSOEVER, EXCEPT BY WRITTEN PERMISSION OF DAMAFIN.

