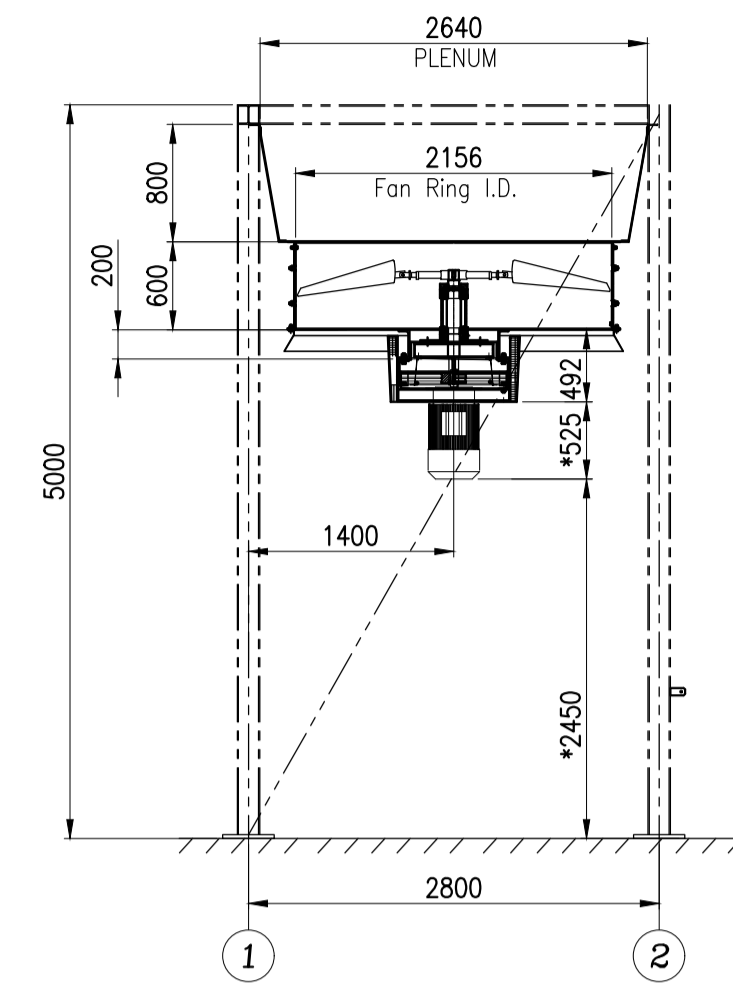
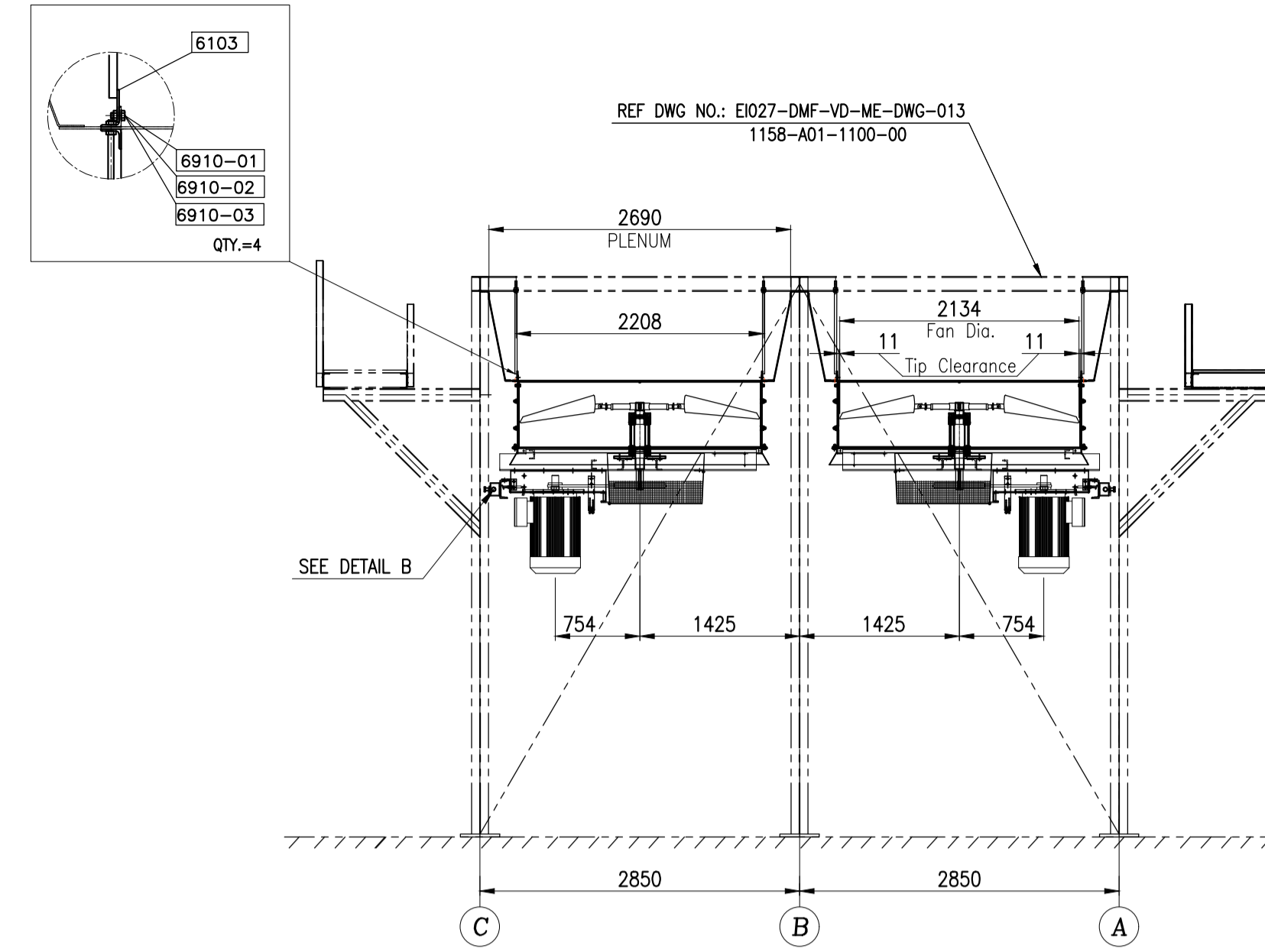


Please kindly revise as per phone conversation.

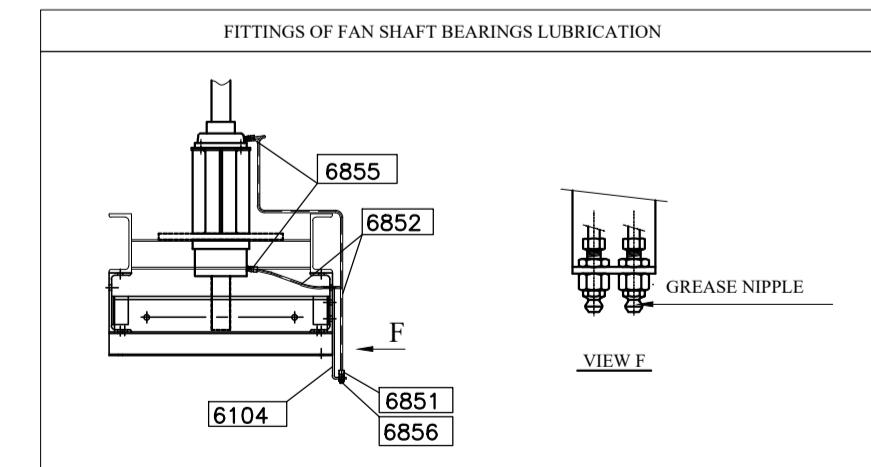
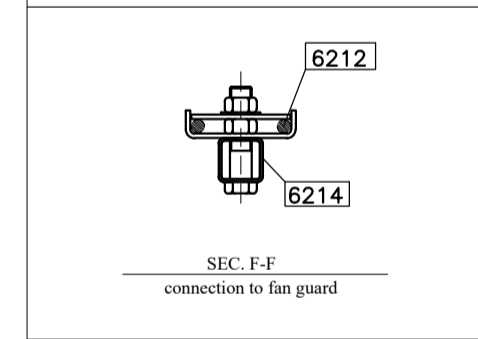
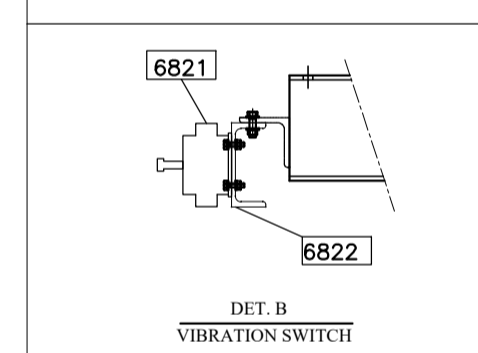
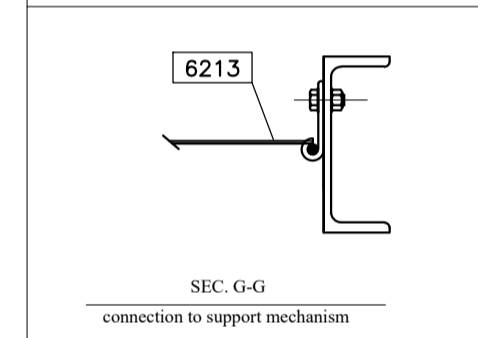
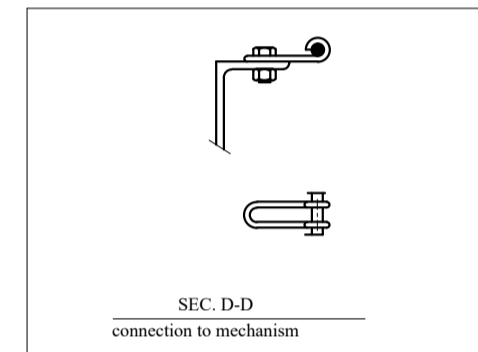
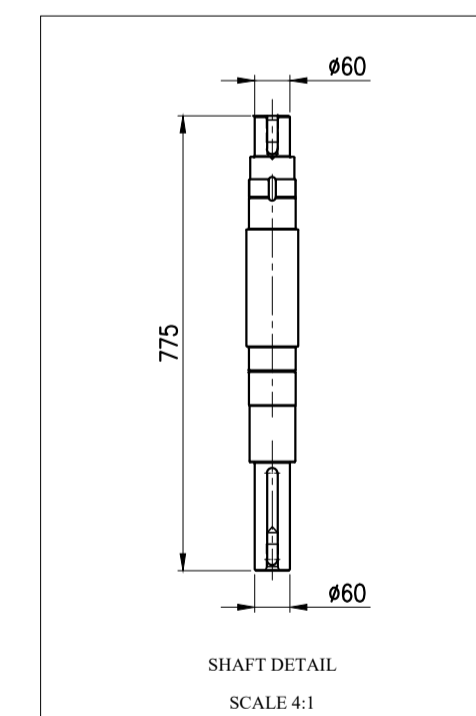
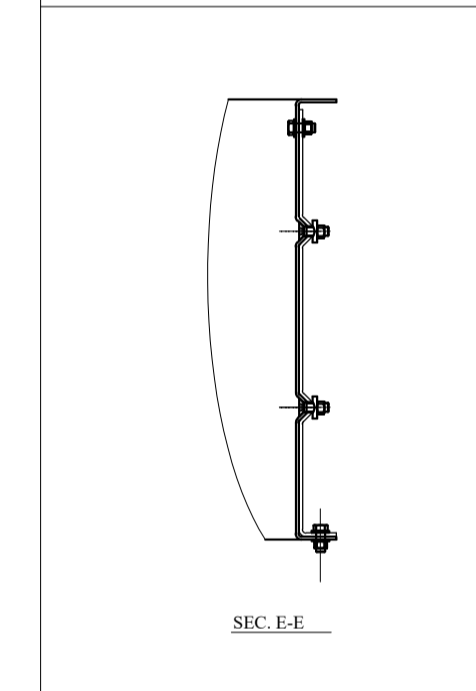
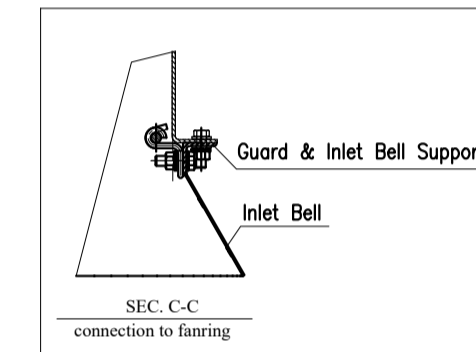
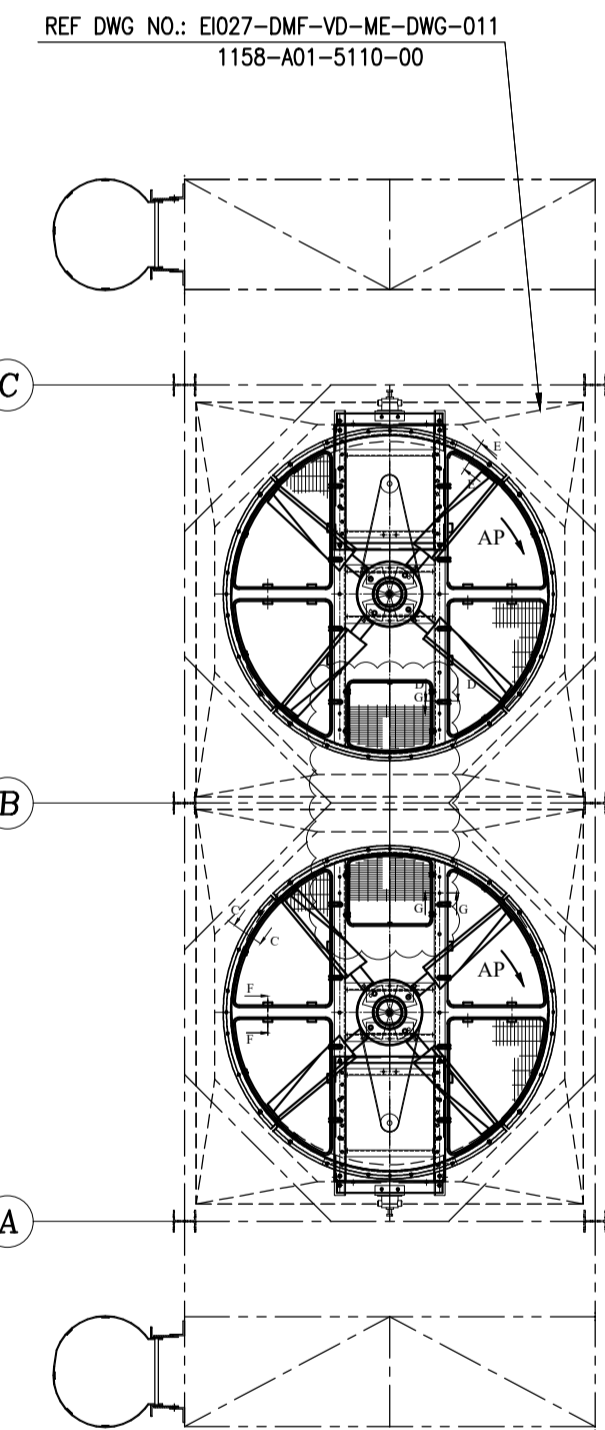


FRONT VIEW  
CL. A-C

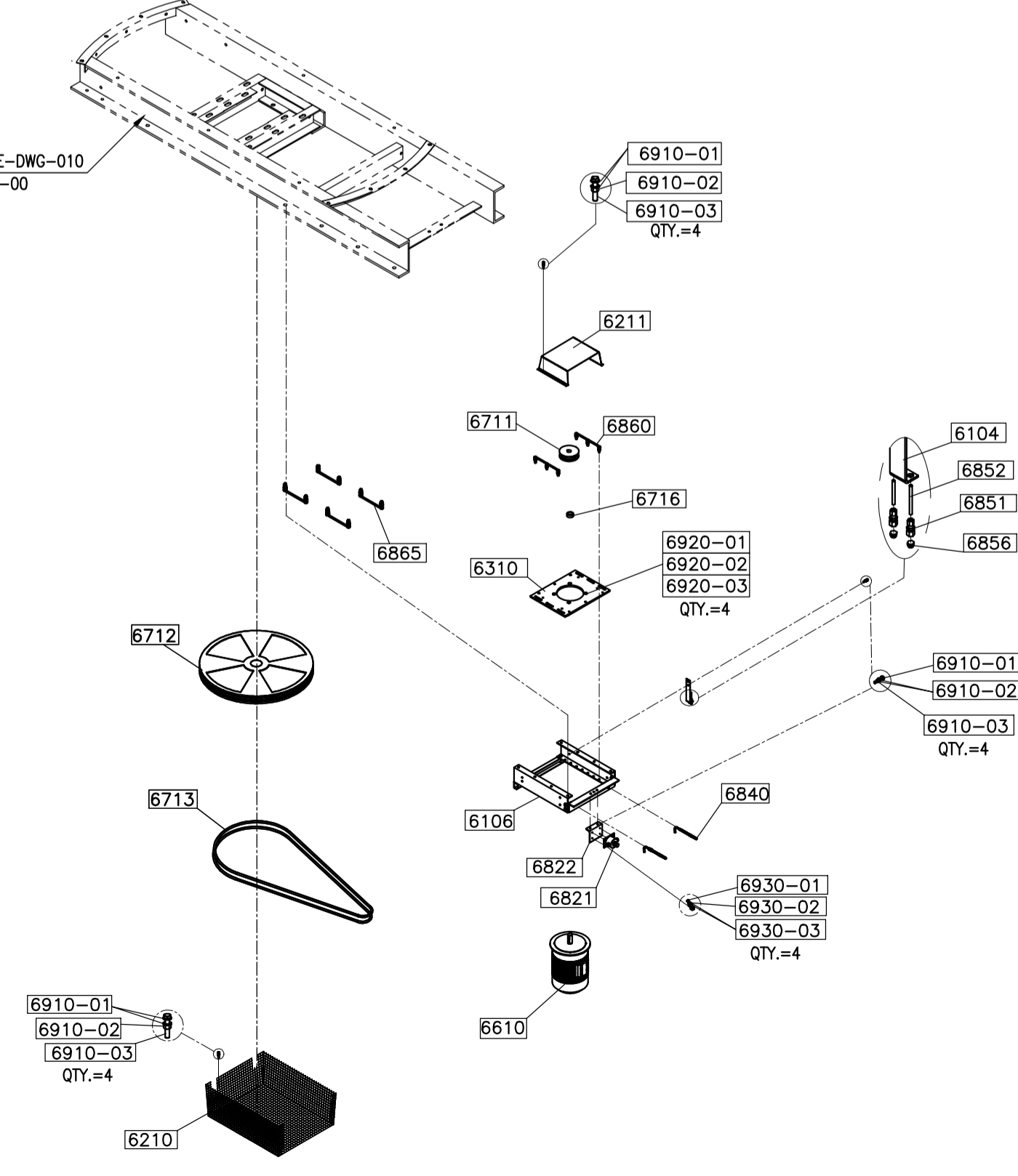
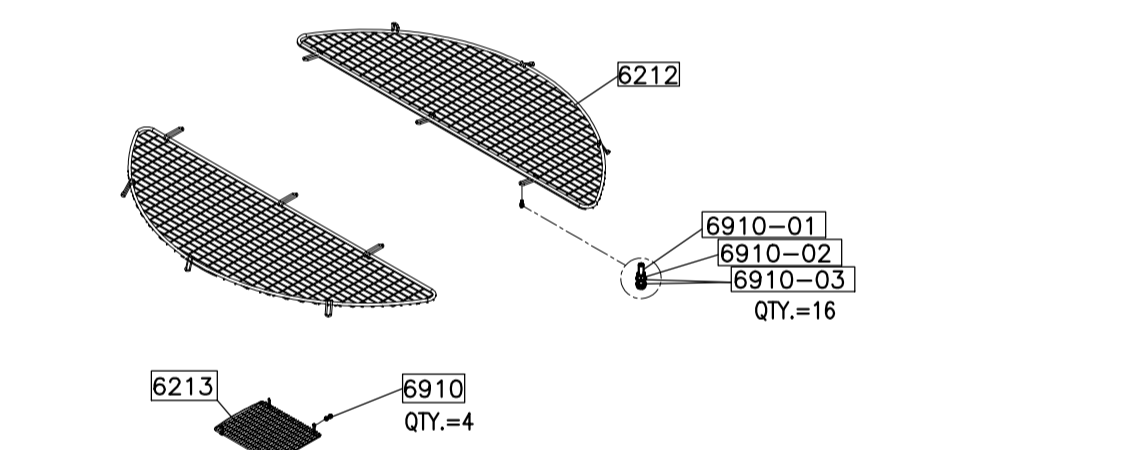
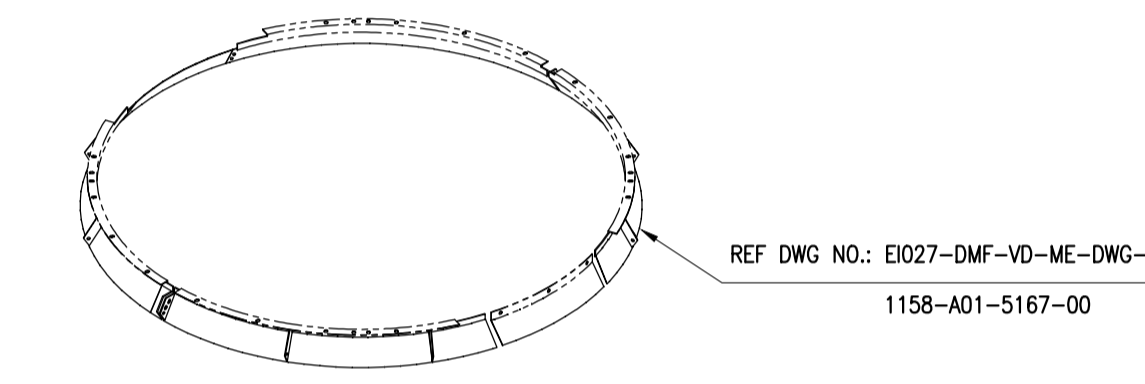
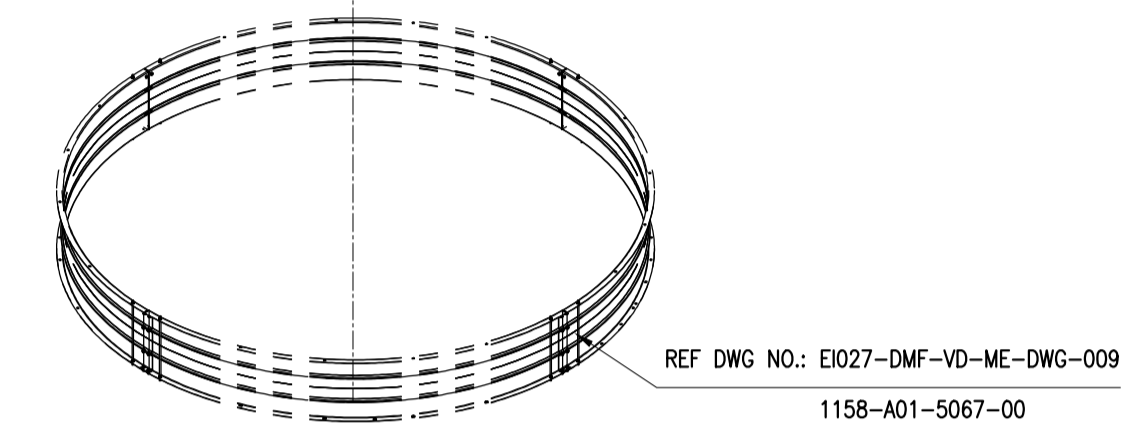
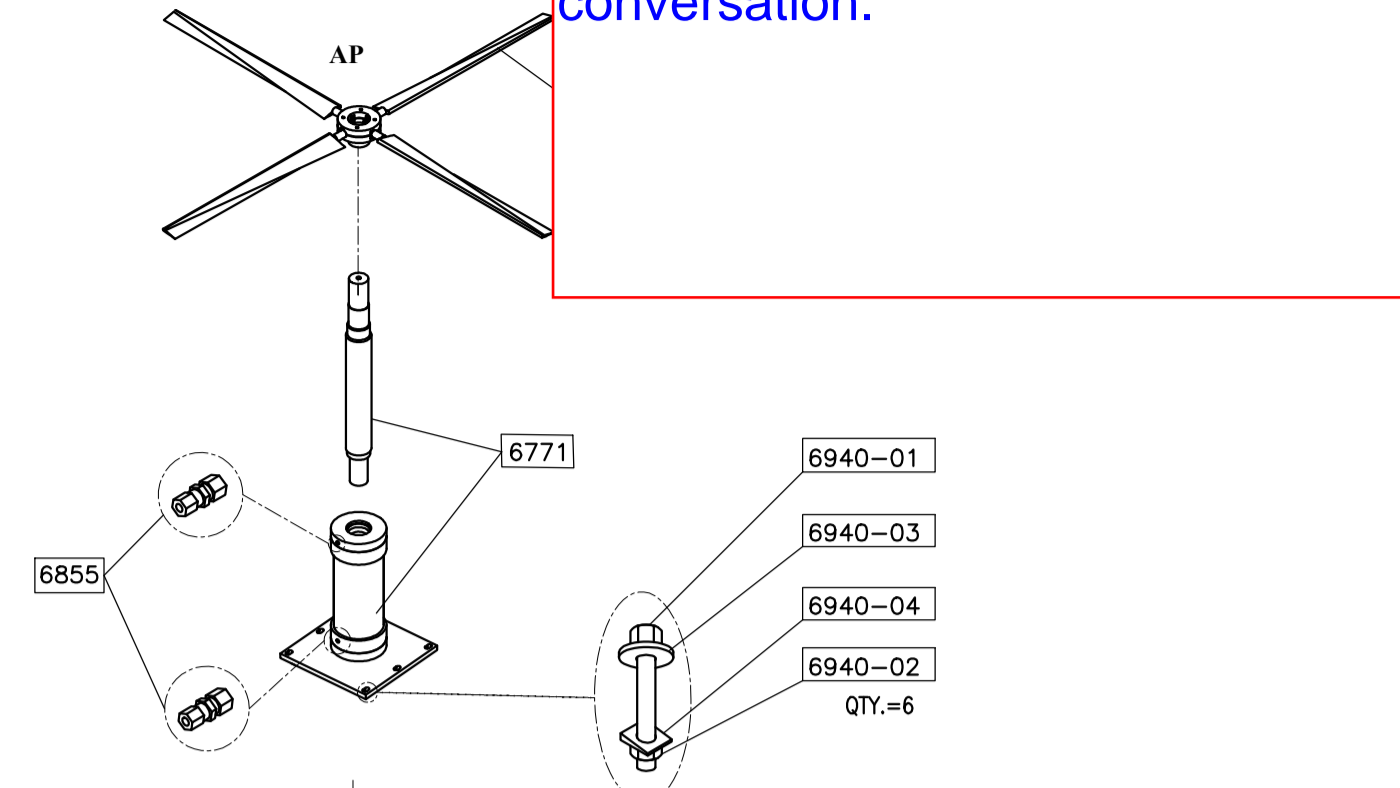
\* THIS DIMENSION WILL BE FINALIZED AFTER APPROVED OF MOTOR DATA SHEET



SIDE VIEW



NOTE :  
 1-ALL DIMENSION ARE IN MILLIMETERS.  
 2-HOT DIP GALVANIZING SHALL BE DONE AS PER ASTM-123/ISO 1461.  
 3-BOLTS, NUTS, WASHERS, THREADS, PARTS INCLUDES THREADS SHALL BE PROJECT SPECIFICATION DOC. NO. E1027-DMF-VD-QC-PRO-024  
 4-DETAILS OF THE PARTS NO. 6822-00 & 6310-00 & 6716-00 WILL BE ADDED AFTER THE MANUFACTURER HAS FINALIZED.



PART NO.	DESCRIPTION	DIMENSION	MATERIAL	QTY.	UNIT WEIGHT (Kg)	TOTAL WEIGHT (Kg)	REV.
6000-00	FAN DRIVE ASSEMBLY FOR TWO UNITS	-	-	4	-	906	
6000-00	FAN DRIVE ASSEMBLY FOR ONE UNITS	-	-	2	-	453	
EACH FAN DRIVE WITH AP FAN FOR ONE SET INCLUDES :				1AP	226.5	226.5	
6103-00	TIE BEAM	REF. SHEET 2	ST-37(Hot Dip Galv)	2	2.5	5	R2
6104-00	LUBRICATION PIPING SUPPORT	REF. SHEET 2	ST-37(Hot Dip Galv)	1	1	1	R2
6106-00	MOTOR SUPPORTING STRUCTURE	REF. SHEET 2	ST-37(Hot Dip Galv)	1	61	61	R2
6210-00	DRIVEN PULLEY GUARD	REF. SHEET 2	ST-37(Hot Dip Galv)	1	10	10	R2
6211-00	DRIVER PULLEY GUARD	REF. SHEET 2	ST-37(Hot Dip Galv)	1	8	8	R2
6212-00	FAN GUARD, 7(FI)	-	-	-	20	-	
6212-00/1	TRIANGULAR MESH	REF. SHEET 2	ST-37(Hot Dip Galv)	1	5	5	R2
6212-00/2	TRIANGULAR MESH	REF. SHEET 2	ST-37(Hot Dip Galv)	1	5	5	R2
6212-00/3	TRIANGULAR MESH	REF. SHEET 2	ST-37(Hot Dip Galv)	1	5	5	R2
6212-00/4	TRIANGULAR MESH	REF. SHEET 2	ST-37(Hot Dip Galv)	1	5	5	R2
6213-00	DRIVE SUPPORTING STRUCTURE GUARD, 7(FI)	REF. SHEET 2	ST-37(Hot Dip Galv)	1	3	3	R2
6214-00	FAN GUARD SUPPORT	REF. SHEET 2	ST-37(Hot Dip Galv)	2	3	6	R2
6310-00	MOTOR PLATE	REF. SHEET 2	ST-37(Hot Dip Galv)	1	-	-	R2
6510-00	FAN UNIT DIA. (7 FI) BLADE NO=4	REF. DSH.	Manufacturer standard	1	-	-	
6510-00	MOTOR (7.5 KW, ELECTRIC-Eve, IS-T3-P55)	REF. DSH.	Manufacturer standard	1	-	-	
6711-00	DRIVER PULLEY PT106PA2/PB1106SPA2	REF. DSH.	QG200 ASTM A48-94a	1	-	-	
6712-00	DRIVEN PULLEY PT400PA2/PB1400SPA2	REF. DSH.	QG200 ASTM A48-94a	1	-	-	
6713-00	BELT CAPPA2332 CD=754.3	REF. DSH.	Manufacturer standard	2	-	-	
6716-00	SPACER BETWEEN MOTOR&PULLEY	REF. SHEET 2	ST-37(Galv)	1	0.3	0.3	
6771-00	SHAFT & BEARING BLOCK	REF. DSH.	Manufacturer standard	1	103	103	
6821-00	VIBRATION SWITCH(HOLD)	REF. DSH.	Manufacturer standard	1	-	-	R2
6822-00	VIBRATION SWITCH SUPPORT (HOLD)	REF. SHEET 2	ST-37(Hot Dip Galv)	1	2	2	R2
6840-00	TENSIONING BOLT	M16	C.S CL. 8.8(GALV)A36	2	1	2	
6851-00	UNION FEMALE CONNECTOR(1/8" NPT-6mm(TUBE))	REF. SHEET 2	S.S304L	2	0.1	0.2	
6852-00	TUBE (OD=8 mm, ID=6)	4000	S.S304L	1	-	-	
6855-00	UNION MALE CONNECTOR(1/4" NPT-8mm(TUBE))	REF. DSH.	S.S304L	2	-	-	
6856-00	GREASE NIPPLE (1/8" NPT)	REF. DSH.	S.S304L	2	-	-	
6860-00	CLAMP	REF. SHEET 2	C.S GALV JA36	2	1	2	
6865-00	CLAMP	REF. SHEET 2	C.S GALV JA36	4	1	4	

BOLT & NUT & WASHER FOR ASSEMBLY PARTS AP FAN:		1SET	4SET			
6103-03	NUT FOR TIE BEAM	M16	DIN 934 -CL.8 (Dacromet)	4	16	-
6103-04	WASHER	A17	DIN 125 A17 St (Dacromet)	4	16	-
6106-05	BOLT FOR FAN GUARD SUPPORT	M18x40	DIN 933 CL.8.8 (Dacromet)	6	24	-
6106-06	NUT	M16	DIN 934 -CL.8 (Dacromet)	12	48	-
6106-07	WASHER	A17	DIN 125 A17 St (Dacromet)	6	24	-
6840-02	NUT FOR TENSIONING BOLT	M16	DIN 934 -CL.8 (Dacromet)	4	16	-
6840-03	WASHER	A17	DN434-18-ST(%) (Dacromet)	2	8	-
6840-04	WASHER	A17	DIN 125 A17 St (Dacromet)	2	8	-
6860-02	BOLT FOR CLAMP	M18x55	DIN 933 CL.8.8 (Dacromet)	6	24	-
6860-03	NUT	M16	DIN 934 -CL.8 (Dacromet)	6	24	-
6860-04	WASHER	A17	DIN 125 A17 St (Dacromet)	12	48	-
6865-02	BOLT FOR CLAMP	M18x55	DIN 933 CL.8.8 (Dacromet)	8	32	-
6865-03	NUT	M16	DIN 934 -CL.8 (Dacromet)	16	64	-
6865-04	WASHER	A17	DIN 125 A17 St (Dacromet)	18	72	-

BOLT & NUT & WASHER FOR ASSEMBLY PART AP OR AV FAN:		1SET	4SET			
6910-01	BOLT	M12x40	DIN 933 CL.8.8 (Dacromet)	36	144	-
6910-02	NUT	M12	DIN 934 -CL.8 (Dacromet)	36	144	-
6910-03	WASHER	A13	DIN 125 A17 St (Dacromet)	72	288	-
6920-01	BOLT FOR MOTOR TO MOTOR PLATE	M18*70	DIN 933 CL.8.8 (Dacromet)	4	16	-
6920-02	NUT	M16	DIN 934 -CL.8 (Dacromet)	4	16	-
6920-03	WASHER	A17	DIN 125 A17 St (Dacromet)	4	16	-
6930-01	BOLT FOR VIBRATION SWITCH SUPPORT	M8*30	DIN 933 CL.8.8 (Dacromet)	4	16	-
6930-02	NUT	M8	DIN 934 -CL.8 (Dacromet)	4	16	-
6930-03	WASHER	A9	DIN 125 A17 St (Dacromet)	8	32	-
6940-01	BOLT FOR BEARING BLOCK TO SUPPORT MECHANISM	M18x65	DIN 933 CL.8.8 (Dacromet)	6	24	-
6940-02	NUT	M16	DIN 934 -CL.8 (Dacromet)	6	24	-
6940-03	WASHER	A17	DIN 125 A17 St (Dacromet)	6	24	-
6940-04	WASHER	A17	DN434-18-ST(%) (Dacromet)	6	24	-

* FOR MORE DETAILS FOR EACH COMPONENT OF AIR COOLER REFER TO BELOW DRAWING & DOCUMENTS.		
REFERENCED DWG&DOC.		
TITLE	VENDOR DOCUMENT NO.	CLIENT DOCUMENT NO.
General Arrangement Drawing	1158-A01-1000-00	E1027-DMF-VD-ME-DWG-003
Plenum Drawing	1158-A01-5110-00	E1027-DMF-VD-ME-DWG-011
Fan Ring Drawing	1158-A01-5067-00	E1027-DMF-VD-ME-DWG-009
Support Mechanism Drawing	1158-A01-6307-00	E1027-DMF-VD-ME-DWG-010
Steel Structure Drawing	1158-A01-1100-00	E1027-DMF-VD-ST-DWG-013
Surface Preparation and Painting Procedure	1158-A01-0901-00	E1027-DMF-VD-QC-PRO-024

REFERENCE DSH.		
TITLE	VENDOR DOCUMENT NO.	CLIENT DOCUMENT NO.
Axial Fan Data Sheet	1158-A01-6510-00	E1027-DMF-VD-ME-DSH-016
Electrical Motor Data Sheet	1158-A01-6610-00	E1027-DMF-VD-EL-DSH-017
Belt & Pulley Data Sheet	1158-A01-6710-00	E1027-DMF-VD-ME-DSH-018
Vibration Switch Data Sheet	1158-A01-6800-00	E1027-DMF-VD-IN-DSH-019

R2	08/31/2024	ISSUED FOR APPROVAL	F.SZ	F.A	J.B.L	A.GHZ
R1	08/20/2024	ISSUED FOR APPROVAL	F.SZ	F.A	J.B.L	A.GHZ
R0	08/07/2024	ISSUED FOR APPROVAL	F.SZ	F.A	J.B.L	A.GHZ
REV	DATE	DESCRIPTION	DRAWN BY	CHECKED BY	APPROVED BY	FINAL APPROVED BY
CLIENT:			CONTRACTOR:			
PROJECT : <b>AIR COOLER FOR</b> <b>Toase-che Park Sanati Gohar Ofogh Petrochemical Co.</b> <b>Fan Drive Assembly Drawing</b> <b>1158-A01-6000-00</b> <b>(SHEET 1 OF 2)</b>			<b>Factory : Km 14 special Karaj road</b> THIS DOCUMENT OF A CONFIDENTIAL NATURE IS THE PROPERTY OF DAMAFIN AND SHALL NOT BE REPRODUCED IN ANY MANNER, NOR USED FOR ANY PURPOSE WHAT SO EVER, EXCEPT BY WRITTEN PERMISSION OF DAMAFIN.			
DWG. NO.	E1027-DMF-VD-ME-DWG-008		REV.	R2		
SCALE :	N.T.S.	SIZE :	A1	REV. :		

