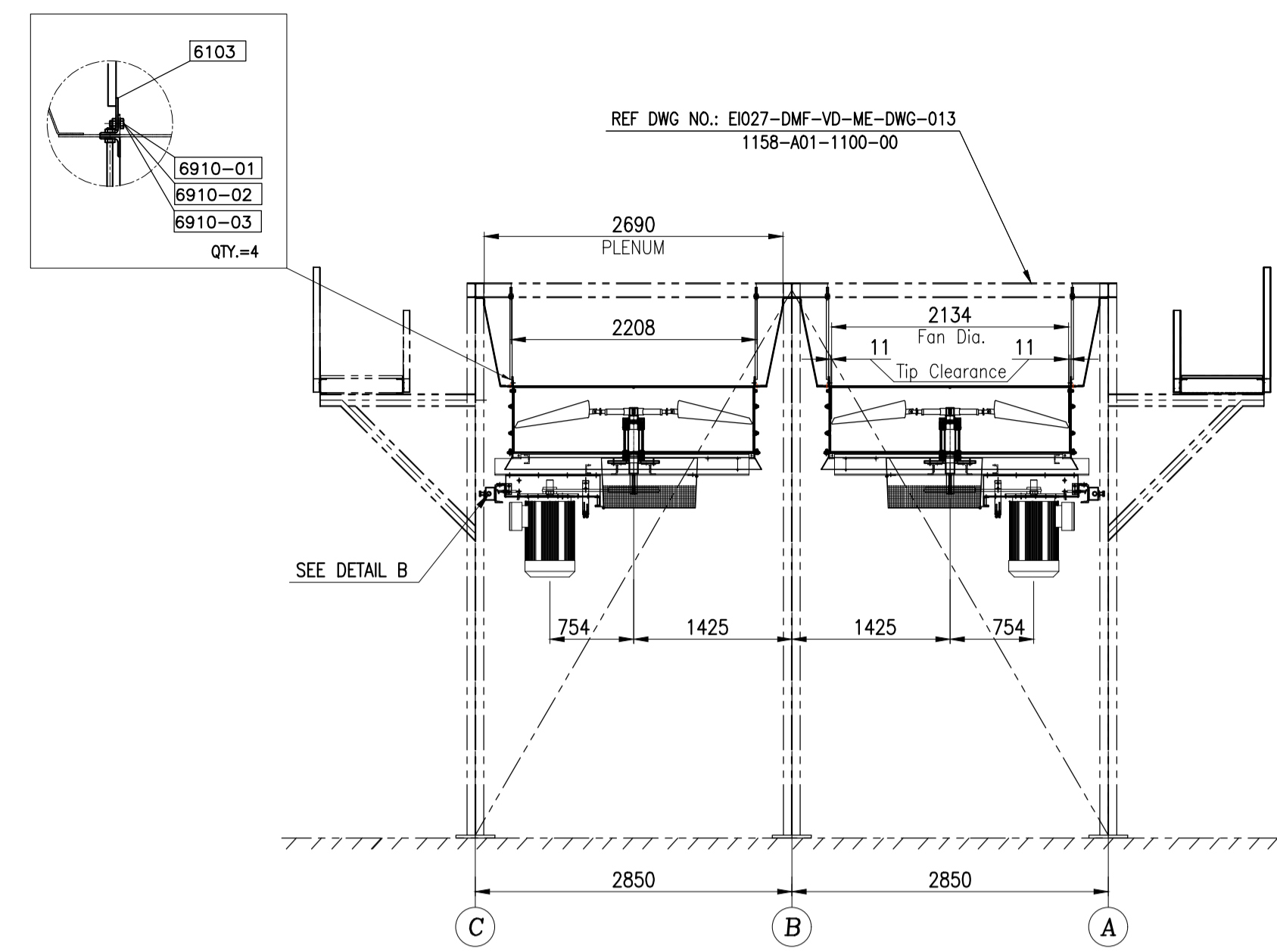
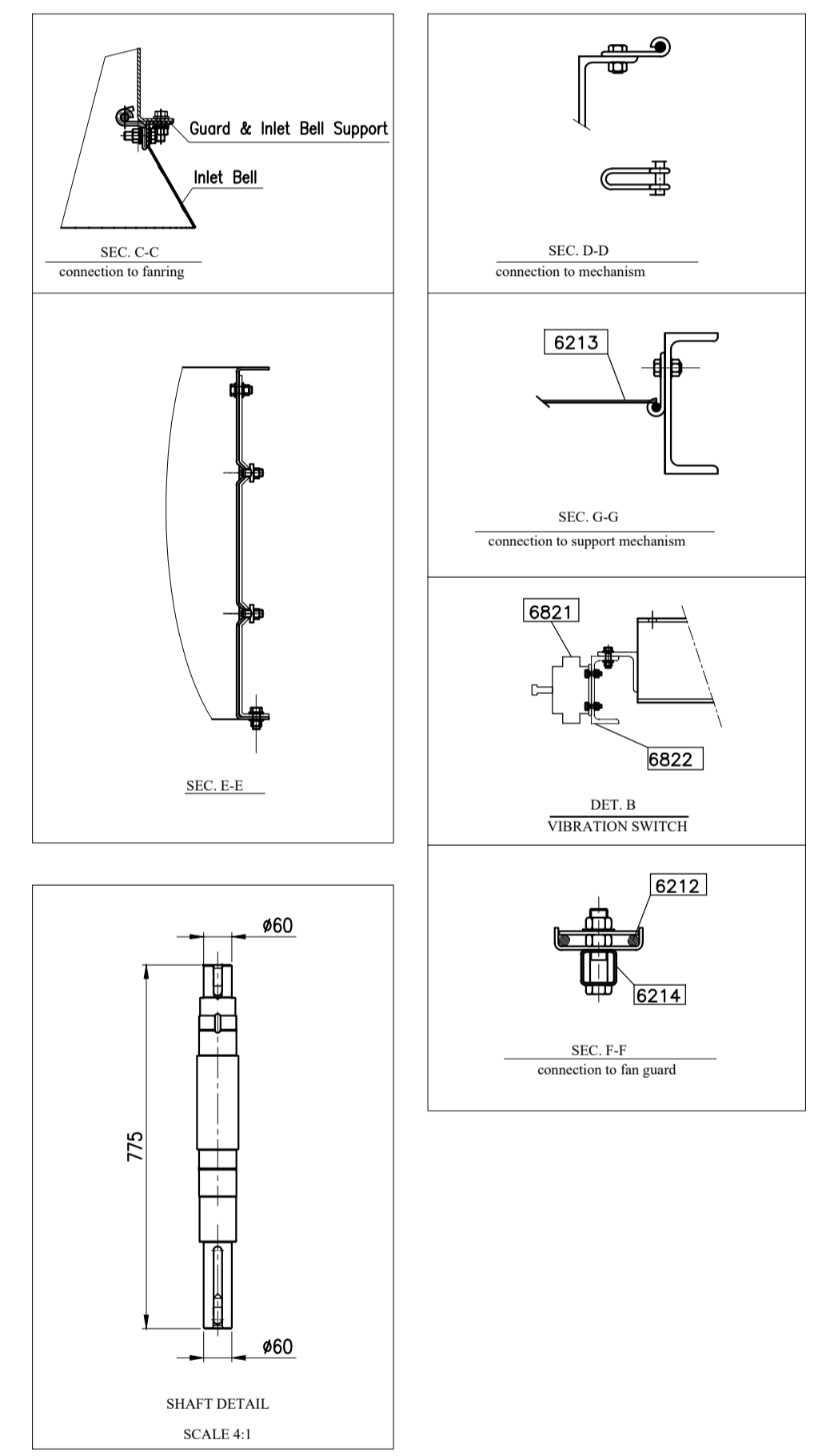
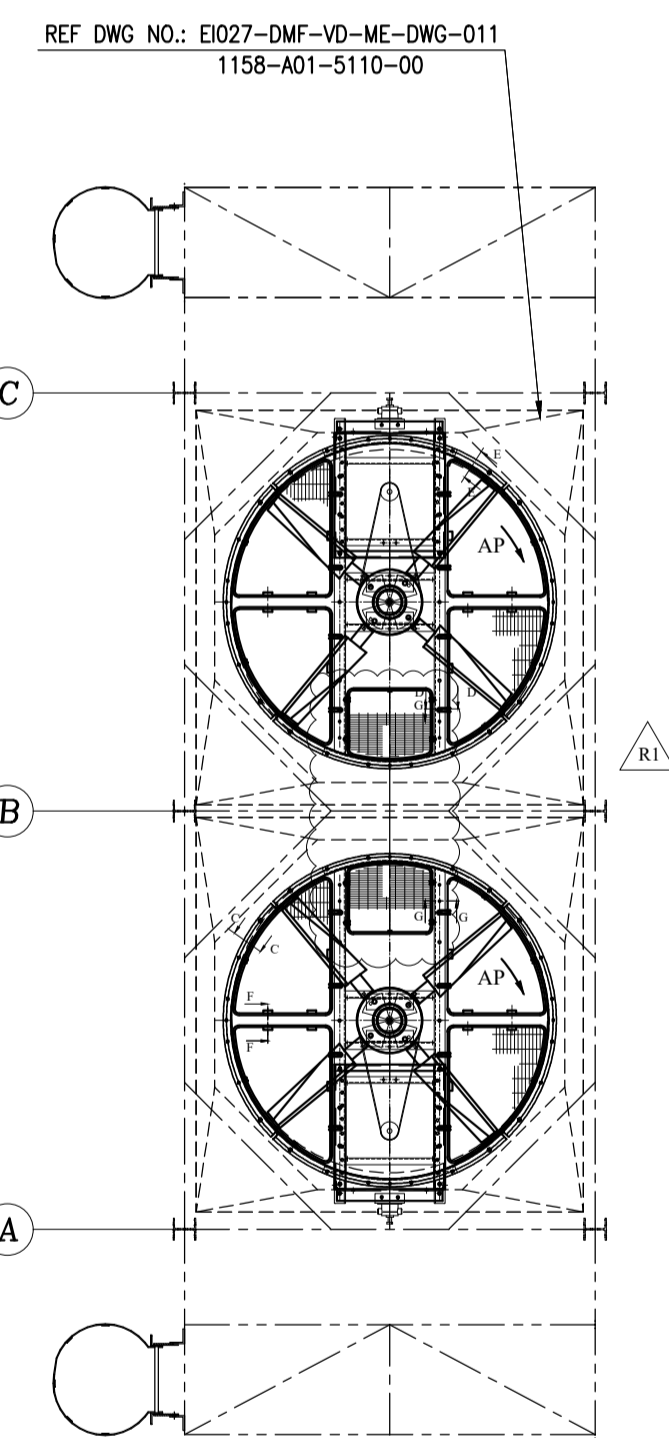


**FRONT VIEW**  
CL. A-C

\* THIS DIMENSION WILL BE FINALIZED AFTER APPROVED OF MOTOR DATA SHEET



**SIDE VIEW**



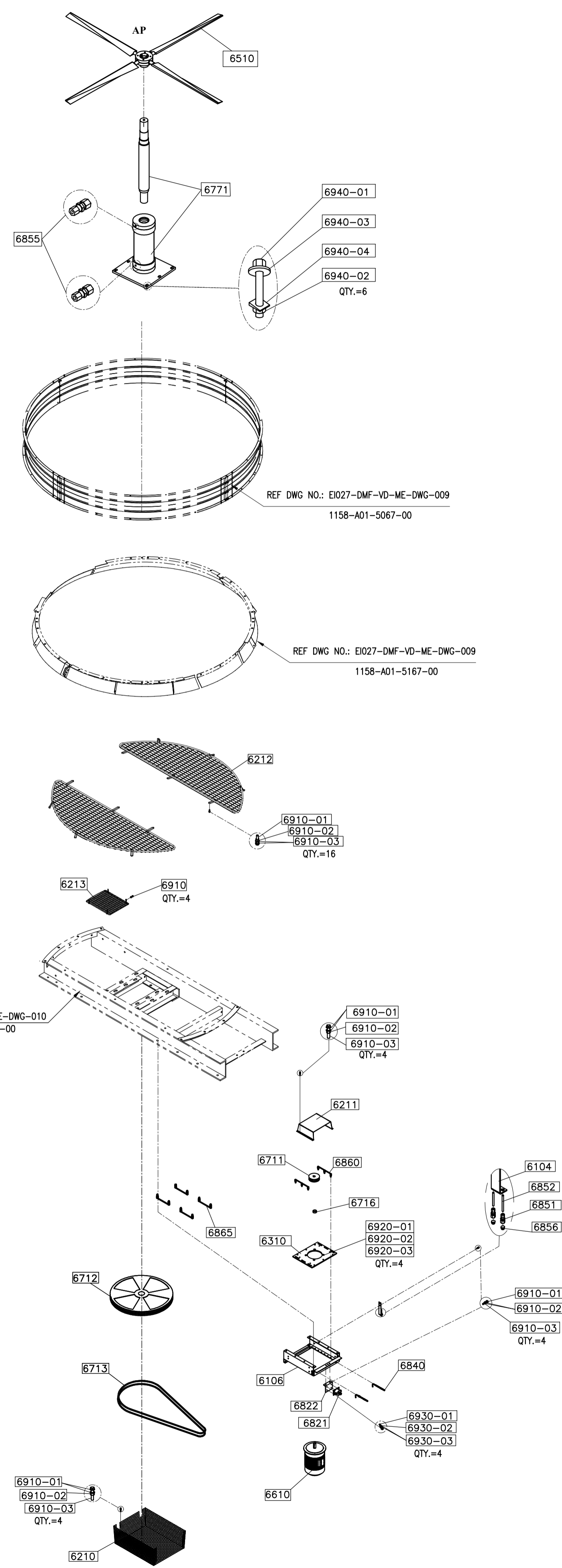
**NOTE :**  
 1-ALL DIMENSION ARE IN MILLIMETERS.  
 2-HOT DIP GALVANIZING SHALL BE DONE AS PER ASTM-123/ISO 1461.  
 3-BOLTS, NUTS, WASHERS, THREADS, PARTS INCLUDES THREADS SHALL BE PROJECT SPECIFICATION DOC. NO. E1027-DMF-VD-OC-PRO-024  
 4-DETAILS OF THE PARTS NO. 6822-00 & 6310-00 & 6716-00 WILL BE ADDED AFTER THE MANUFACTURER HAS FINALIZED.

\* FOR MORE DETAILS FOR EACH COMPONENT OF AIR COOLER REFER TO BELOW DRAWING & DOCUMENTS.

REFERENCED DWG&DOC.		
TITLE	VENDOR DOCUMENT NO.	CLIENT DOCUMENT NO.
General Arrangement Drawing	1158-A01-1000-00	E1027-DMF-VD-ME-DWG-003
Plenum Drawing	1158-A01-5110-00	E1027-DMF-VD-ME-DWG-011
Fan Ring Drawing	1158-A01-5067-00	E1027-DMF-VD-ME-DWG-009
Support Mechanism Drawing	1158-A01-6307-00	E1027-DMF-VD-ME-DWG-010
Steel Structure Drawing	1158-A01-1100-00	E1027-DMF-VD-ST-DWG-013
Surface Preparation and Painting Procedure	1158-A01-0901-00	E1027-DMF-VD-QC-PRO-024

REFERENCE DSH.		
TITLE	VENDOR DOCUMENT NO.	CLIENT DOCUMENT NO.
Axial Fan Data Sheet	1158-A01-6510-00	E1027-DMF-VD-ME-DSH-016
Electrical Motor Data Sheet	1158-A01-6610-00	E1027-DMF-VD-EL-DSH-017
Belt & Pulley Data Sheet	1158-A01-6710-00	E1027-DMF-VD-ME-DSH-018
Vibration Switch Data Sheet	1158-A01-6800-00	E1027-DMF-VD-IN-DSH-019



PART NO.	DESCRIPTION	DIMENSION	MATERIAL	QTY.	UNIT WEIGHT (Kg)	TOTAL WEIGHT (Kg)	REV.
6000-00	FAN DRIVE ASSEMBLY FOR TWO UNITS	-	-	4	-	806	-
6000-00	FAN DRIVE ASSEMBLY FOR ONE UNITS	-	-	2	-	403	-
EACH FAN DRIVE WITH AP FAN FOR ONE SET INCLUDES :				1AP	226.5	226.5	-
6103-00	TIE BEAM	REF. SHEET 2	ST-37(Hot Dip Galv)	2	2.5	5	R2
6104-00	LUBRICATION PIPING SUPPORT	REF. SHEET 2	ST-37(Hot Dip Galv)	1	1	1	R2
6106-00	MOTOR SUPPORTING STRUCTURE	REF. SHEET 2	ST-37(Hot Dip Galv)	1	61	61	R2
6210-00	DRIVEN PULLEY GUARD	REF. SHEET 2	ST-37(Hot Dip Galv)	1	10	10	R2
6211-00	DRIVER PULLEY GUARD	REF. SHEET 2	ST-37(Hot Dip Galv)	1	8	8	R2
6212-00	FAN GUARD, 7(F)	-	-	20	-	-	-
6212-00/1	TRIANGULAR MESH	-	-	1	5	5	R2
6212-00/2	TRIANGULAR MESH	REF. SHEET 2	ST-37(Hot Dip Galv)	1	5	5	R2
6212-00/3	TRIANGULAR MESH	-	-	1	5	5	R2
6212-00/4	TRIANGULAR MESH	-	-	1	5	5	R2
6213-00	DRIVE SUPPORTING STRUCTURE GUARD, 7(F)	REF. SHEET 2	ST-37(Hot Dip Galv)	1	3	3	R2
6214-00	FAN GUARD SUPPORT	REF. SHEET 2	ST-37(Hot Dip Galv)	2	3	6	R2
6310-00	MOTOR PLATE	REF. SHEET 2	ST-37(Hot Dip Galv)	1	-	-	R2
6510-00	FAN UNIT DIA. (7 F) BLADE NO=4	REF. DSH.	Manufacturer standard	1	-	-	-
6910-00	MOTOR (7.5 KW, ELECTRIC-Eve, IS-T3-P55)	REF. DSH.	Manufacturer standard	1	-	-	-
6711-00	DRIVER PULLEY PT106PA2PB1106SPA2	REF. DSH.	QG20 ASTM A48-94a	1	-	-	-
6712-00	DRIVEN PULLEY PT400PA2PB1400SPA2	REF. DSH.	QG20 ASTM A48-94a	1	-	-	-
6713-00	BELT CAPPA2332 CD=754.3	REF. DSH.	Manufacturer standard	2	-	-	-
6716-00	SPACER BETWEEN MOTOR&PULLEY	REF. SHEET 2	ST-37(Galv)	1	0.3	0.3	-
6771-00	SHAFT & BEARING BLOCK	REF. DSH.	Manufacturer standard	1	103	103	-
6821-00	VIBRATION SWITCH(HOLD)	REF. DSH.	Manufacturer standard	1	-	-	R2
6822-00	VIBRATION SWITCH SUPPORT (HOLD)	REF. SHEET 2	ST-37(Hot Dip Galv)	1	2	2	R2
6840-00	TENSIONING BOLT	M16	C.S CL. 8.8(GALV)A36	2	1	2	-
6851-00	UNION FEMALE CONNECTOR(1/8" NPT-6mm(TUBE))	REF. SHEET 2	S.S304L	2	0.1	0.2	-
6852-00	TUBE (OD=8 mm, ID=6)	4000	S.S304L	1	-	-	-
6855-00	UNION MALE CONNECTOR(1/4" NPT-8mm(TUBE))	REF. DSH.	S.S304L	2	-	-	-
6856-00	GREASE NIPPLE (1/8" NPT)	REF. DSH.	S.S304L	2	-	-	-
6860-00	CLAMP	REF. SHEET 2	C.S(GALV)A36	2	1	2	-
6865-00	CLAMP	REF. SHEET 2	C.S(GALV)A36	4	1	4	-
<b>BOLT &amp; NUT &amp; WASHER FOR ASSEMBLY PARTS AP FAN:</b>				1SET	4SET		
6103-03	NUT FOR TIE BEAM	M16	DIN 934 -CL.8 (Dacromet)	4	16	-	-
6103-04	WASHER	A17	DIN 125 A17 St (Dacromet)	4	16	-	-
6106-05	BOLT FOR FAN GUARD SUPPORT	M18x40	DIN 933 CL.8.8 (Dacromet)	6	24	-	-
6106-06	NUT	M16	DIN 934 -CL.8 (Dacromet)	12	48	-	-
6106-07	WASHER	A17	DIN 125 A17 St (Dacromet)	6	24	-	-
6840-02	NUT FOR TENSIONING BOLT	M16	DIN 934 -CL.8 (Dacromet)	4	16	-	-
6840-03	WASHER	A17	DN434-18-ST(%) (Dacromet)	2	8	-	-
6840-04	WASHER	A17	DIN 125 A17 St (Dacromet)	2	8	-	-
6860-02	BOLT FOR CLAMP	M18x55	DIN 933 CL.8.8 (Dacromet)	6	24	-	-
6860-03	NUT	M16	DIN 934 -CL.8 (Dacromet)	6	24	-	-
6860-04	WASHER	A17	DIN 125 A17 St (Dacromet)	12	48	-	-
6865-02	BOLT FOR CLAMP	M18x55	DIN 933 CL.8.8 (Dacromet)	8	32	-	-
6865-03	NUT	M16	DIN 934 -CL.8 (Dacromet)	16	64	-	-
6865-04	WASHER	A17	DIN 125 A17 St (Dacromet)	16	64	-	-
<b>BOLT &amp; NUT &amp; WASHER FOR ASSEMBLY PART (FAN DRIVE TO PROJECT LOCATION)</b>				1SET	4SET		
<b>BOLT &amp; NUT &amp; WASHER FOR ASSEMBLY PART AP OR AV FAN:</b>				1SET	4SET		
6910-01	BOLT	M12x40	DIN 933 CL.8.8 (Dacromet)	36	144	-	-
6910-02	NUT	M12	DIN 934 -CL.8 (Dacromet)	36	144	-	-
6910-03	WASHER	A13	DIN 125 A17 St (Dacromet)	72	288	-	-
6920-01	BOLT FOR MOTOR TO MOTOR PLATE	M18*70	DIN 933 CL.8.8 (Dacromet)	4	16	-	-
6920-02	NUT	M16	DIN 934 -CL.8 (Dacromet)	4	16	-	-
6920-03	WASHER	A17	DIN 125 A17 St (Dacromet)	4	16	-	-
6930-01	BOLT FOR VIBRATION SWITCH SUPPORT	M8*30	DIN 933 CL.8.8 (Dacromet)	4	16	-	-
6930-02	NUT	M8	DIN 934 -CL.8 (Dacromet)	4	16	-	-
6930-03	WASHER	A9	DIN 125 A17 St (Dacromet)	8	32	-	-
6940-01	BOLT FOR BEARING BLOCK TO SUPPORT MECHANISM	M18x65	DIN 933 CL.8.8 (Dacromet)	6	24	-	-
6940-02	NUT	M16	DIN 934 -CL.8 (Dacromet)	6	24	-	-
6940-03	WASHER	A17	DIN 125 A17 St (Dacromet)	6	24	-	-
6940-04	WASHER	A17	DN434-18-ST(%) (Dacromet)	6	24	-	-

REV	DATE	DESCRIPTION	DRAWN BY	CHECKED BY	APPROVED BY	FINAL APPROVED BY
R2	08/31/2024	ISSUED FOR APPROVAL	F.SZ	F.A	J.B.L	A.GHZ
R1	08/20/2024	ISSUED FOR APPROVAL	F.SZ	F.A	J.B.L	A.GHZ
R0	08/07/2024	ISSUED FOR APPROVAL	F.SZ	F.A	J.B.L	A.GHZ

CLIENT: **ENBR TEKNOLOJI**

PROJECT: **AIR COOLER FOR Toase-che Park Sanati Gohar Ofogh Petrochemical Co. Fan Drive Assembly Drawing 1158-A01-6000-00 (SHEET 1 OF 2)**

CONTRACTOR: **dt Damafin thermal technology**

Factory : Km 14 special Karaj road

DWG. NO. E1027-DMF-VD-ME-DWG-008  
 SCALE : N.T.S. SIZE : A1 REV. : R2

THIS DOCUMENT OF A CONFIDENTIAL NATURE IS THE PROPERTY OF DAMAFIN AND SHALL NOT BE REPRODUCED IN ANY MANNER, NOR USED FOR ANY PURPOSE WHATSOEVER, EXCEPT BY WRITTEN PERMISSION OF DAMAFIN.

