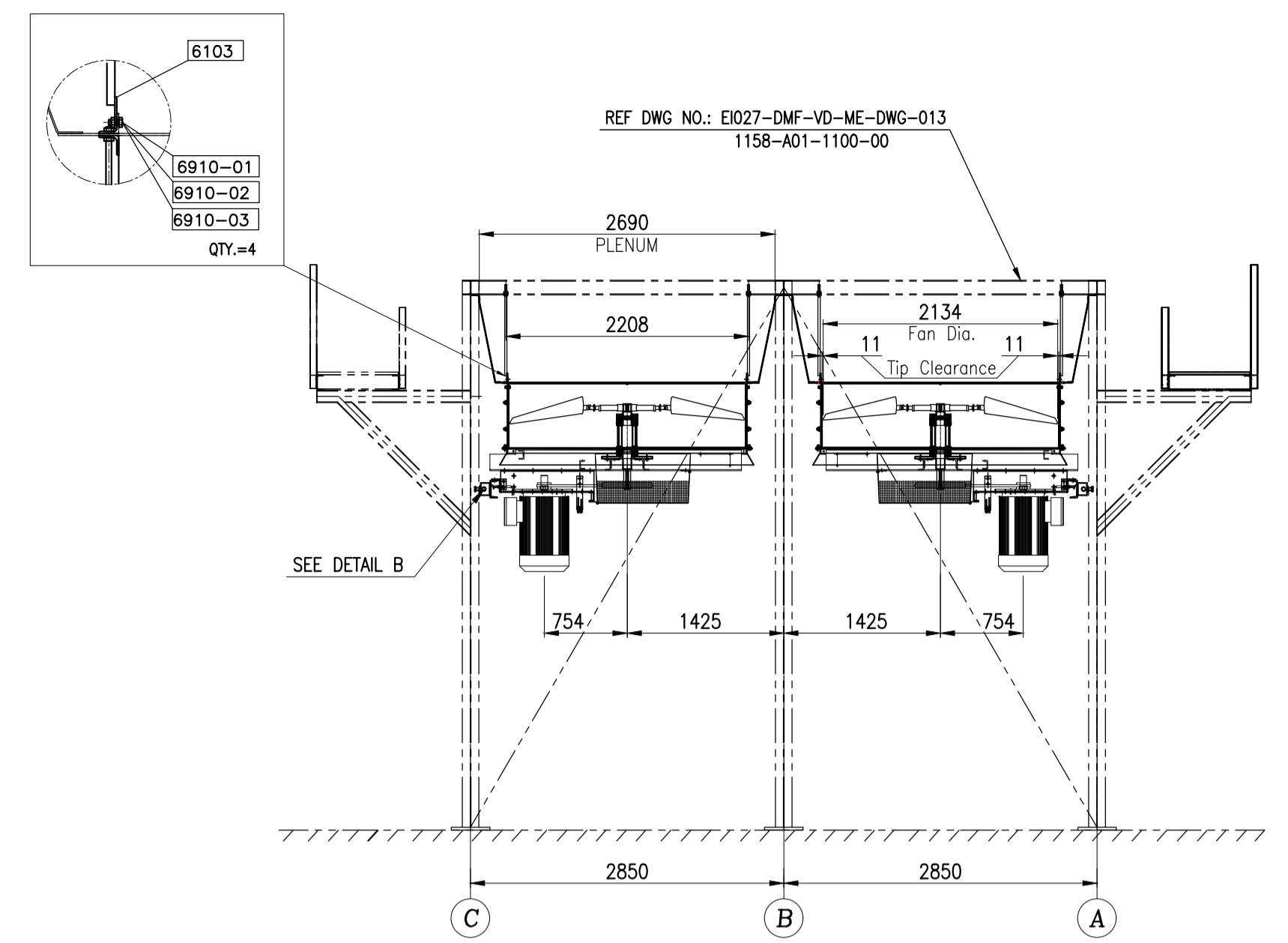
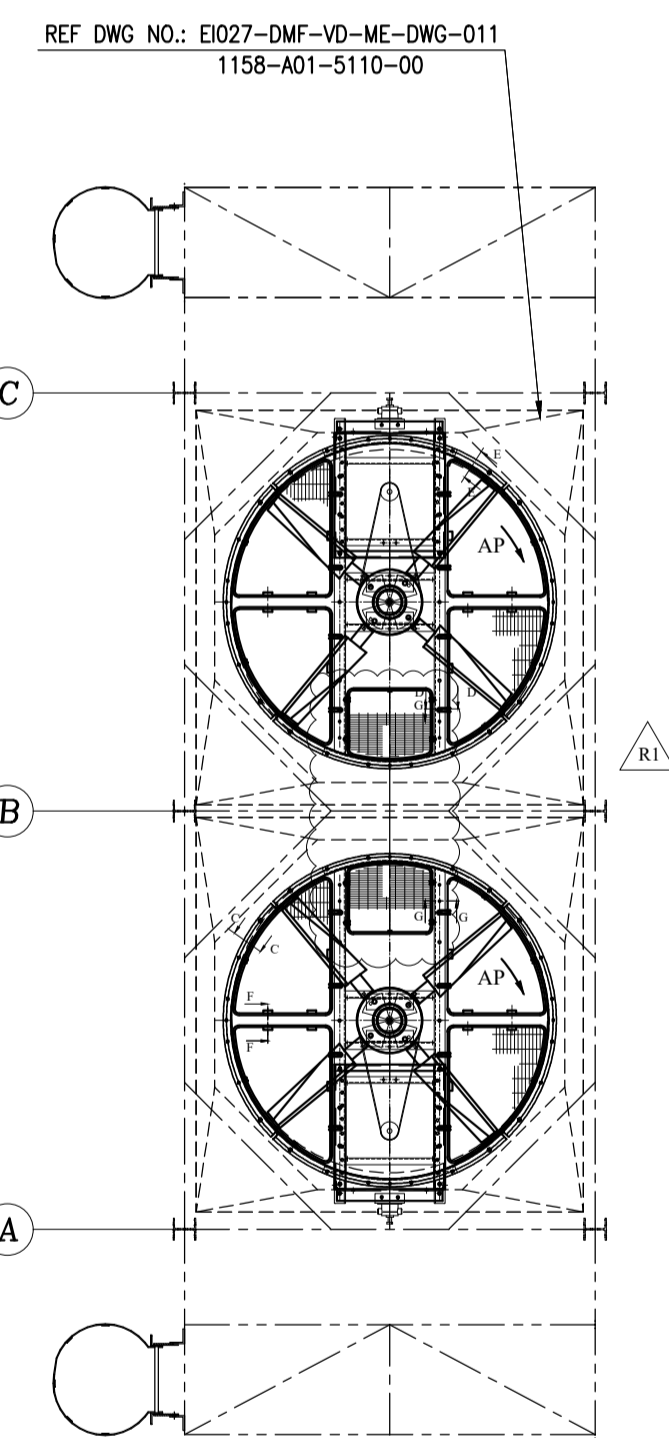


FRONT VIEW
CL. A-C

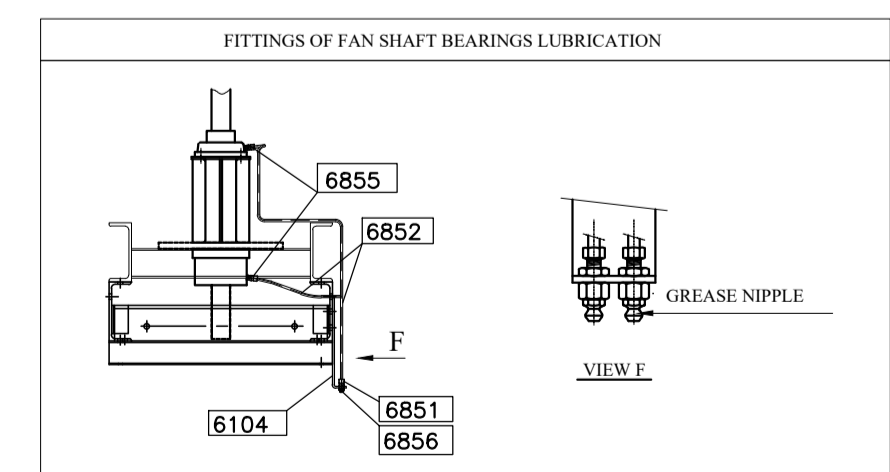
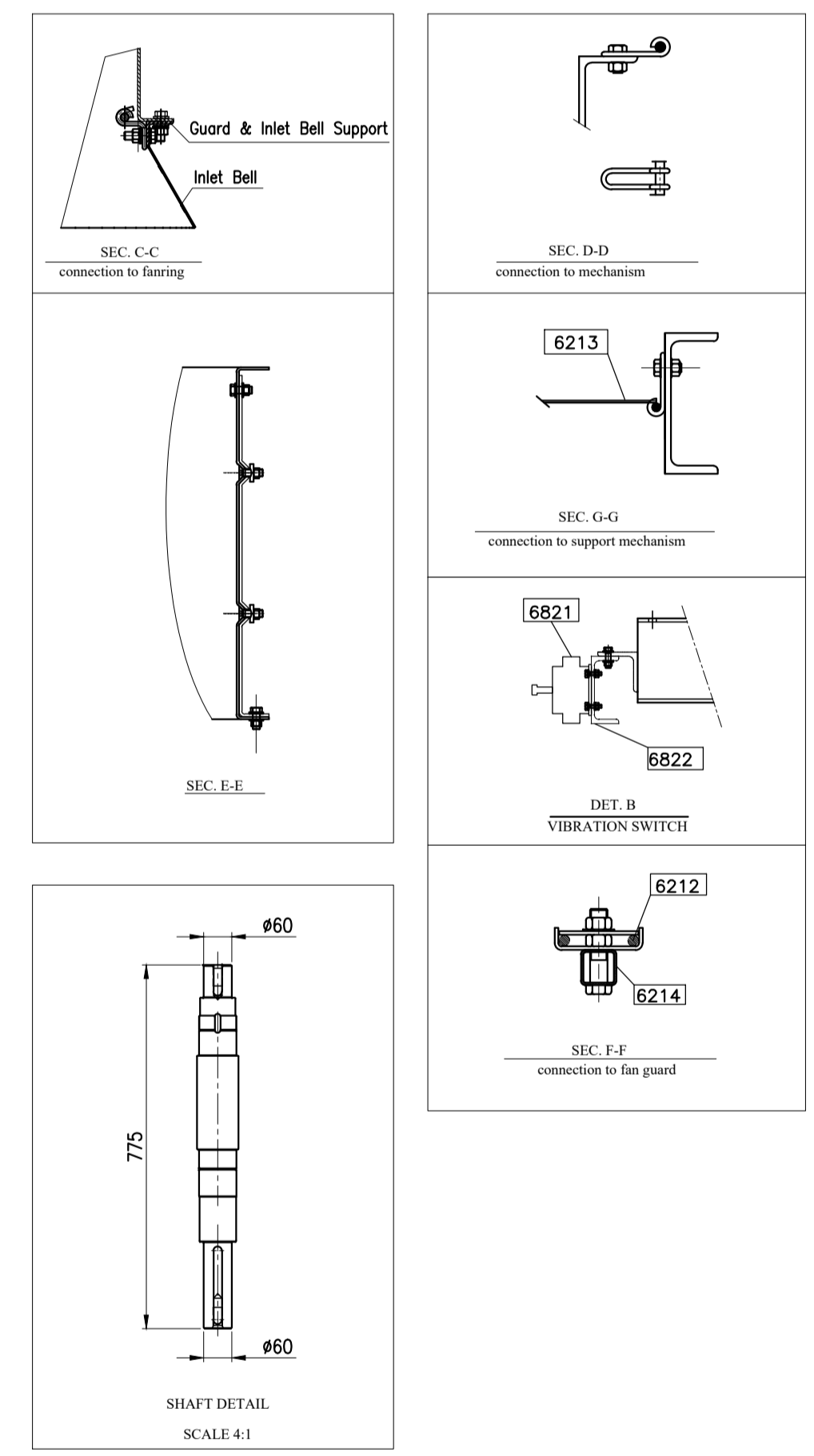
* THIS DIMENSION WILL BE FINALIZED AFTER APPROVED OF MOTOR DATA SHEET



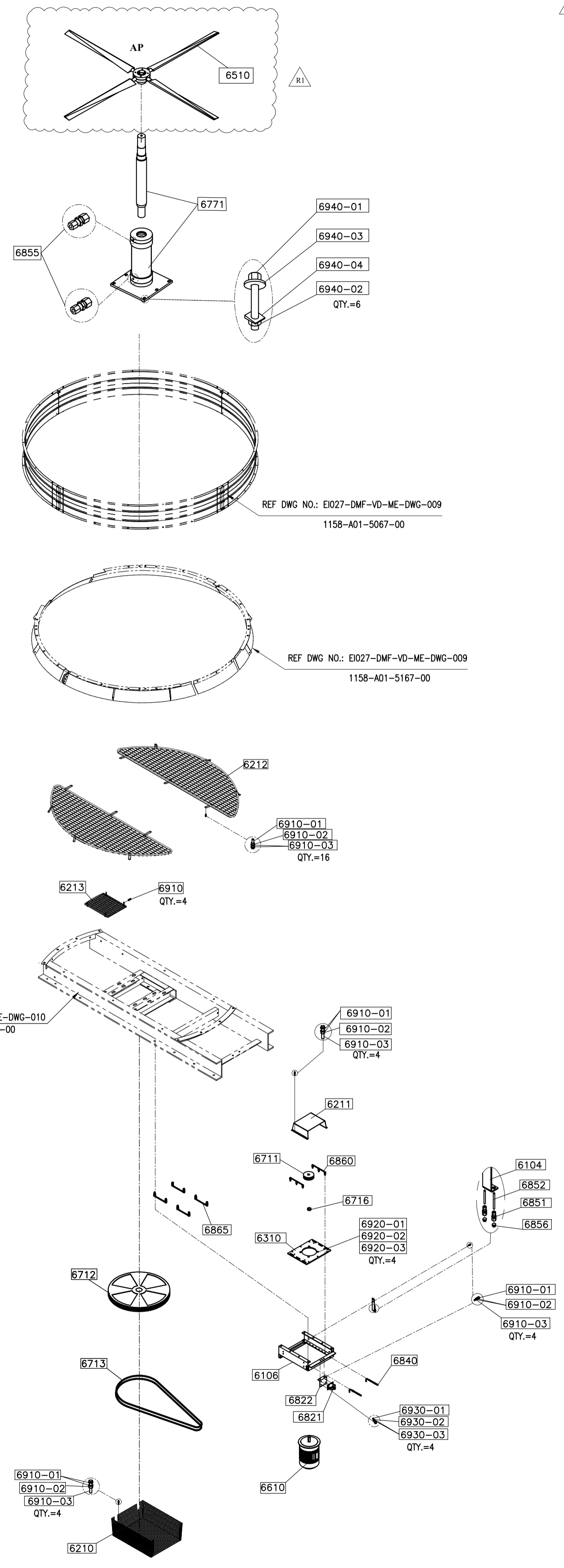
SIDE VIEW



CL. A-C



NOTE :
 1-ALL DIMENSION ARE IN MILLIMETERS.
 2-HOT DIP GALVANIZING SHALL BE DONE AS PER ASTM-123/ISO 1461.
 3-ALL PARTS SHALL BE HOT DIP GALVANIZED.
 4-BOLTS, NUTS, WASHERS, THREADS, PARTS INCLUDES THREADS SHALL BE PROJECT SPECIFICATION.
 5-DETAILS OF THE PARTS NO. 6822-00 & 6310-00 & 6716-00 WILL BE ADDED AFTER THE MANUFACTURER HAS FINALIZED.



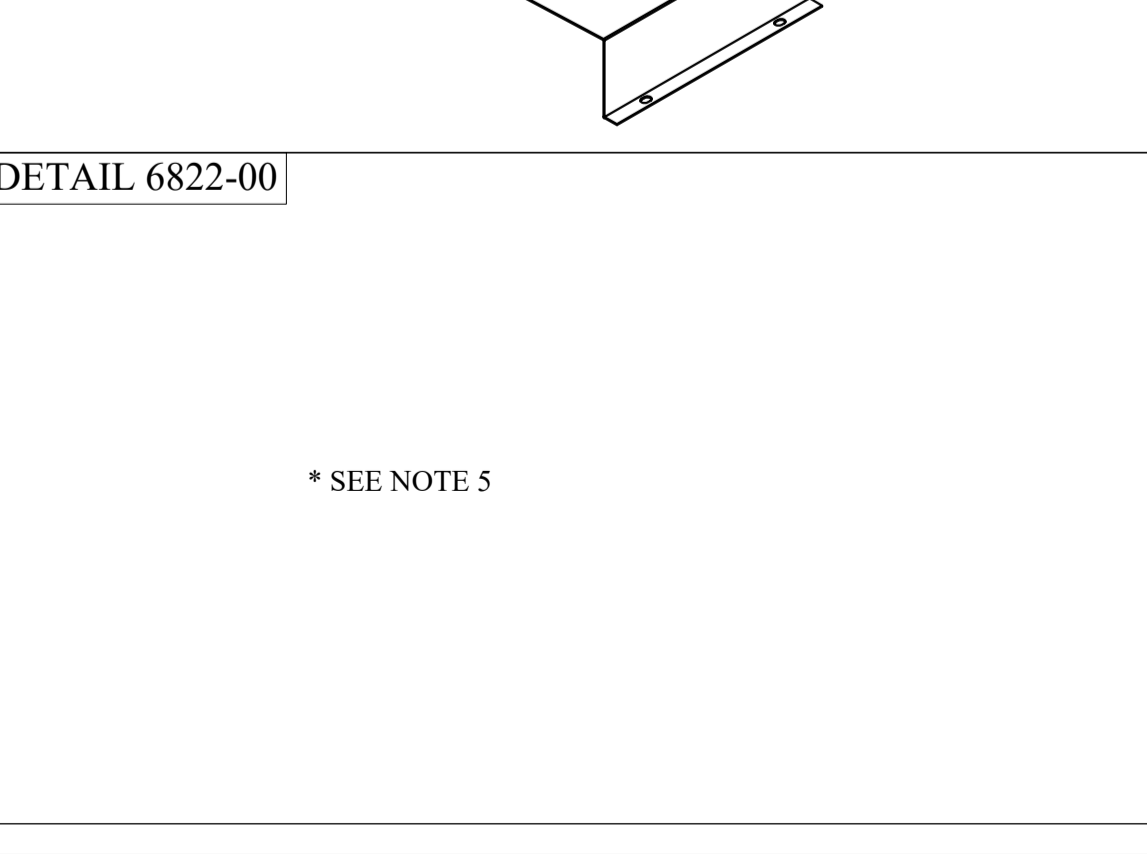
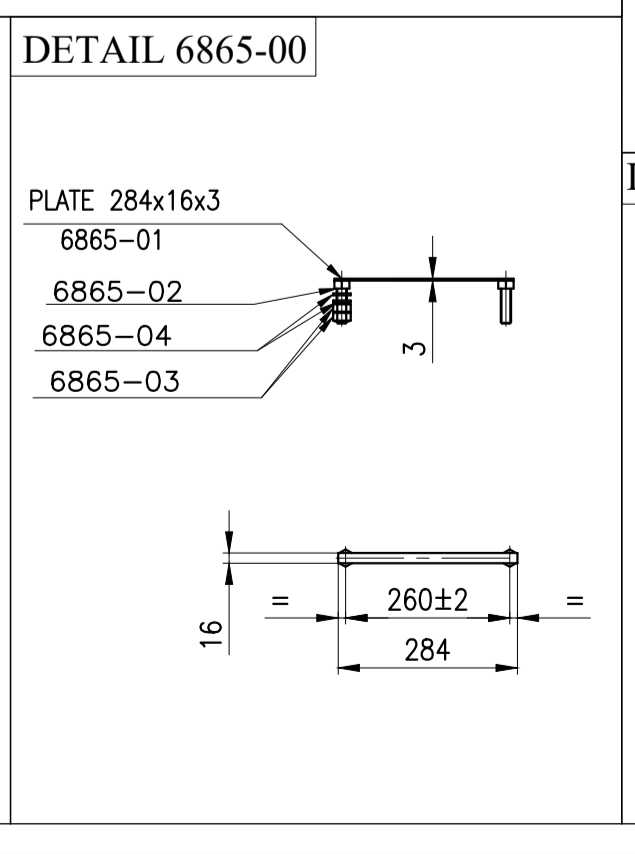
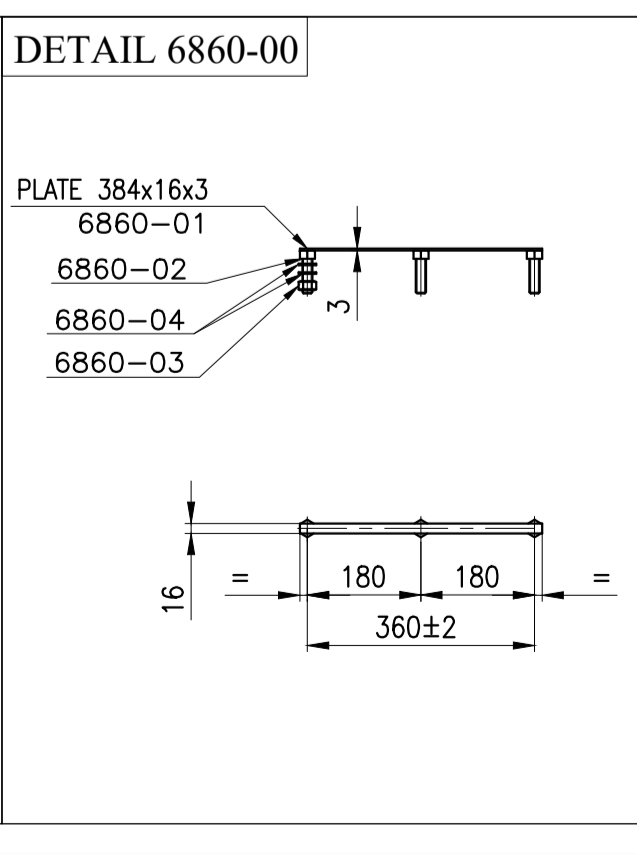
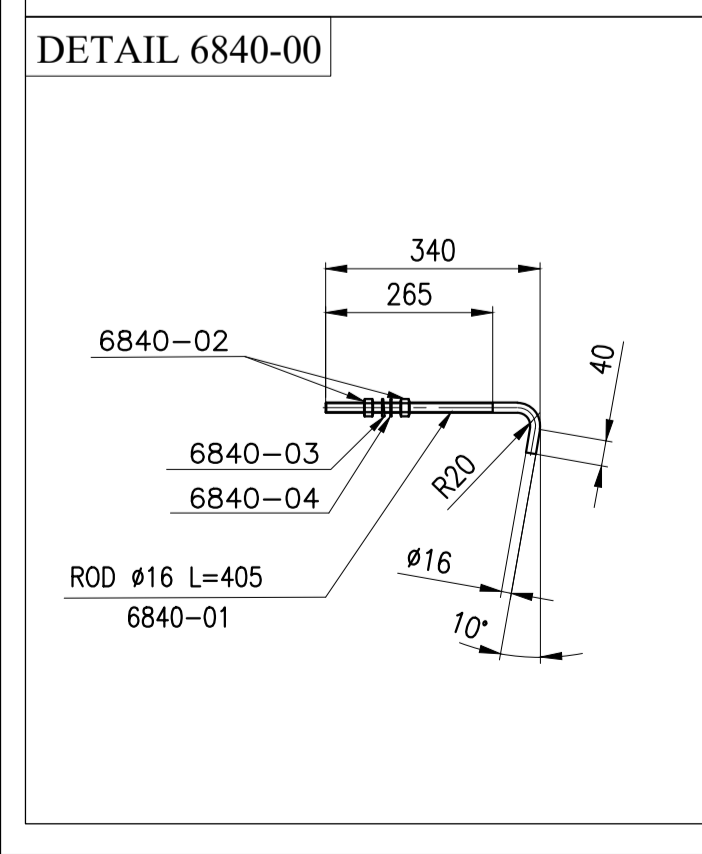
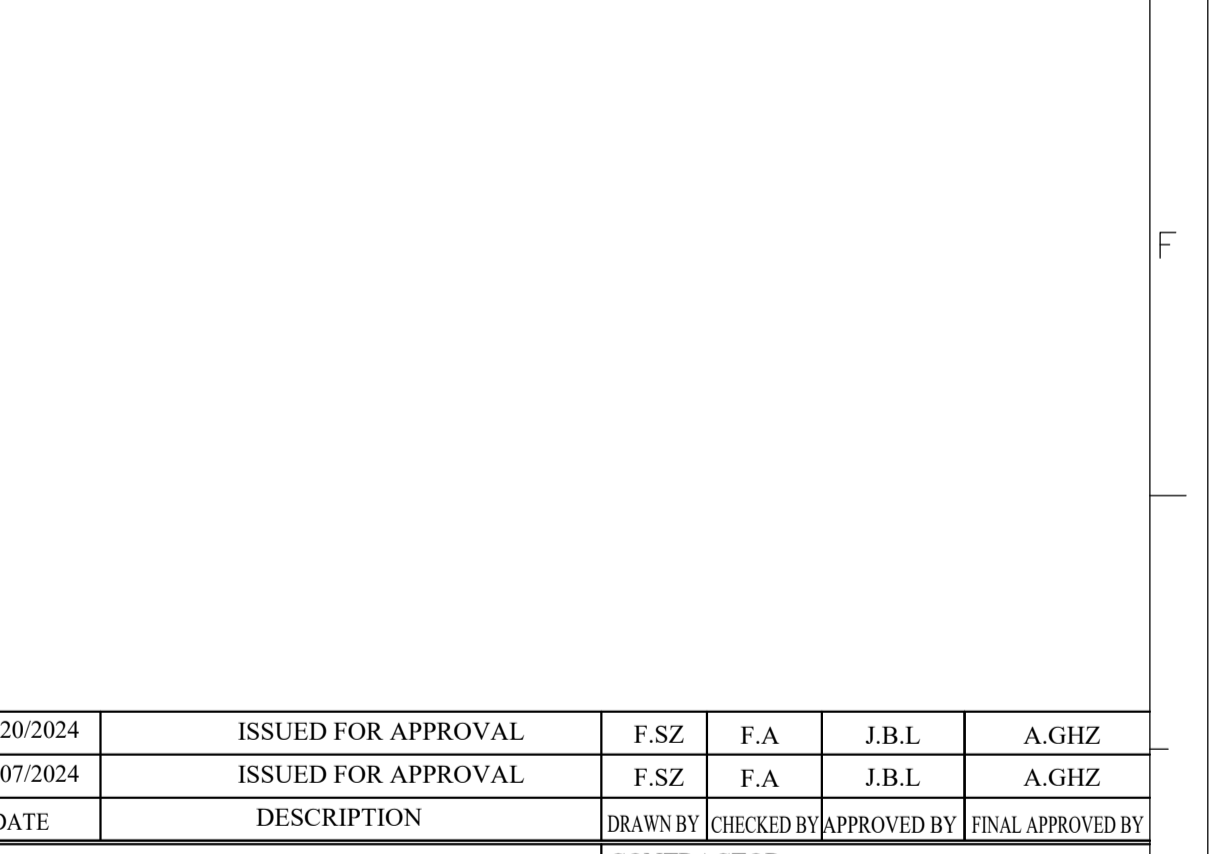
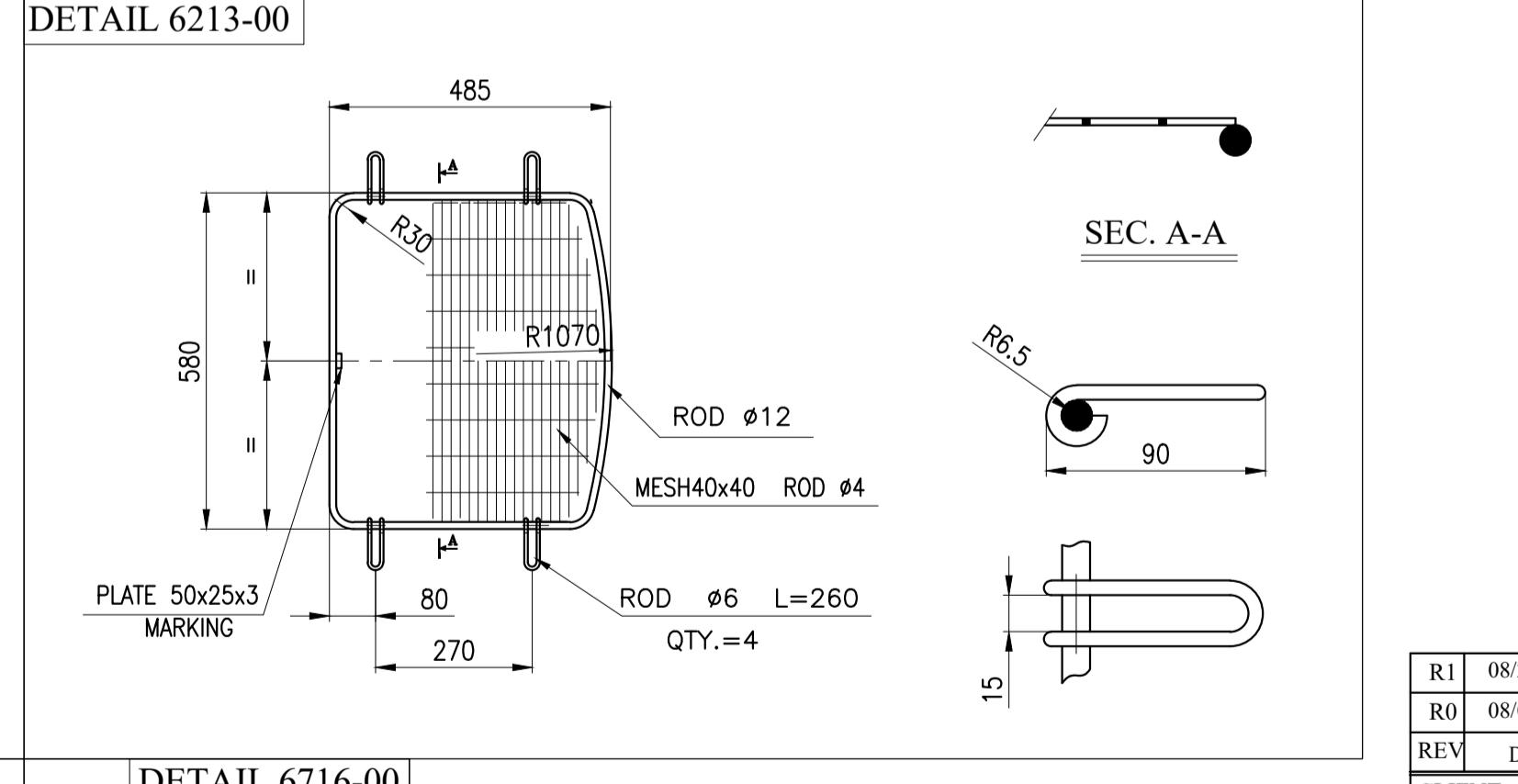
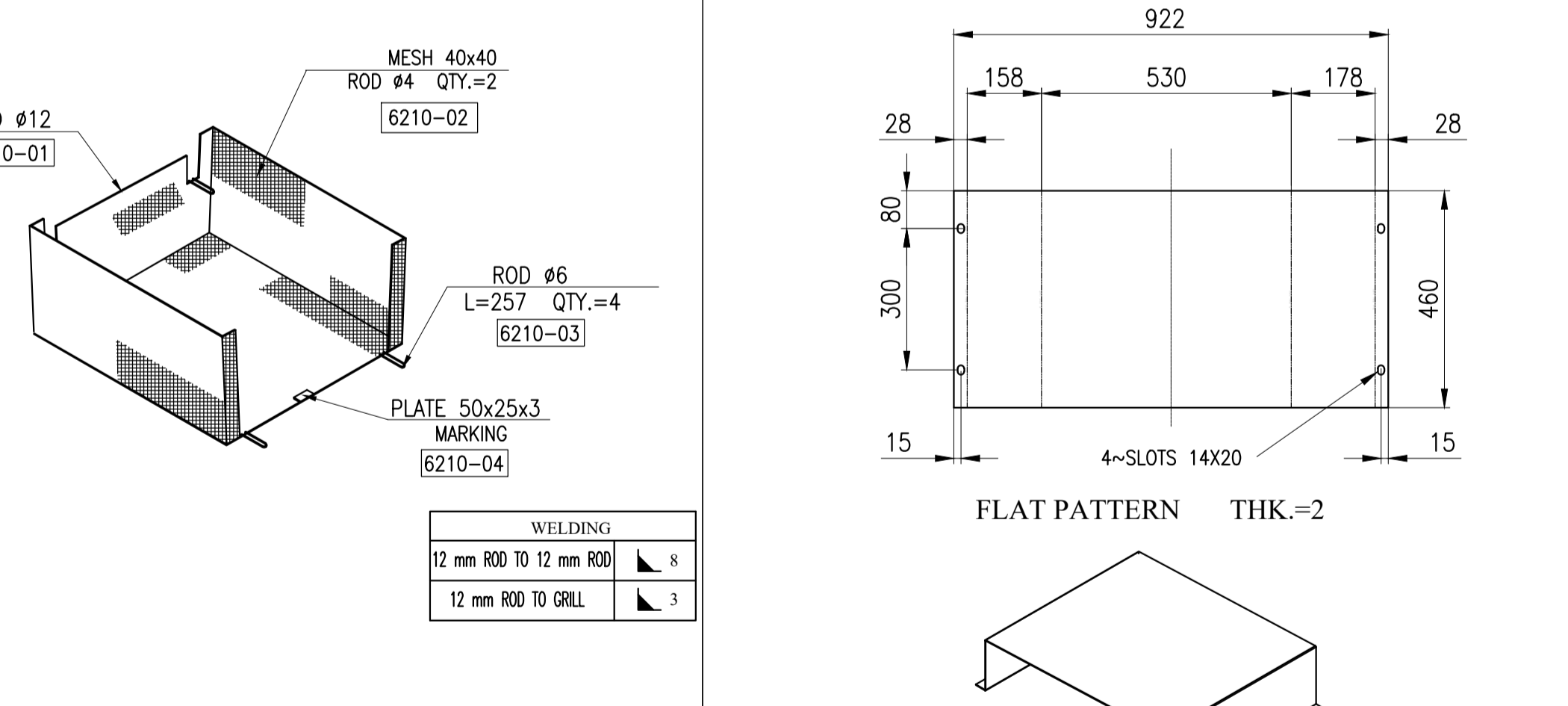
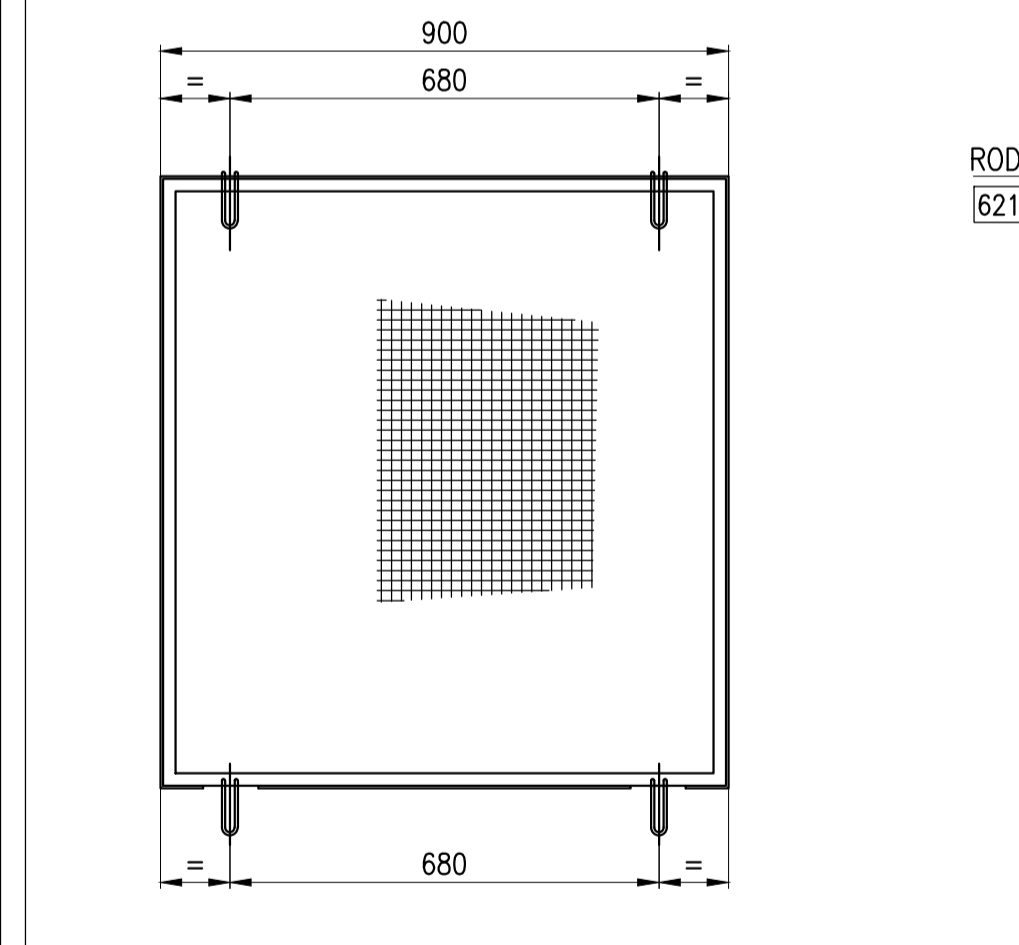
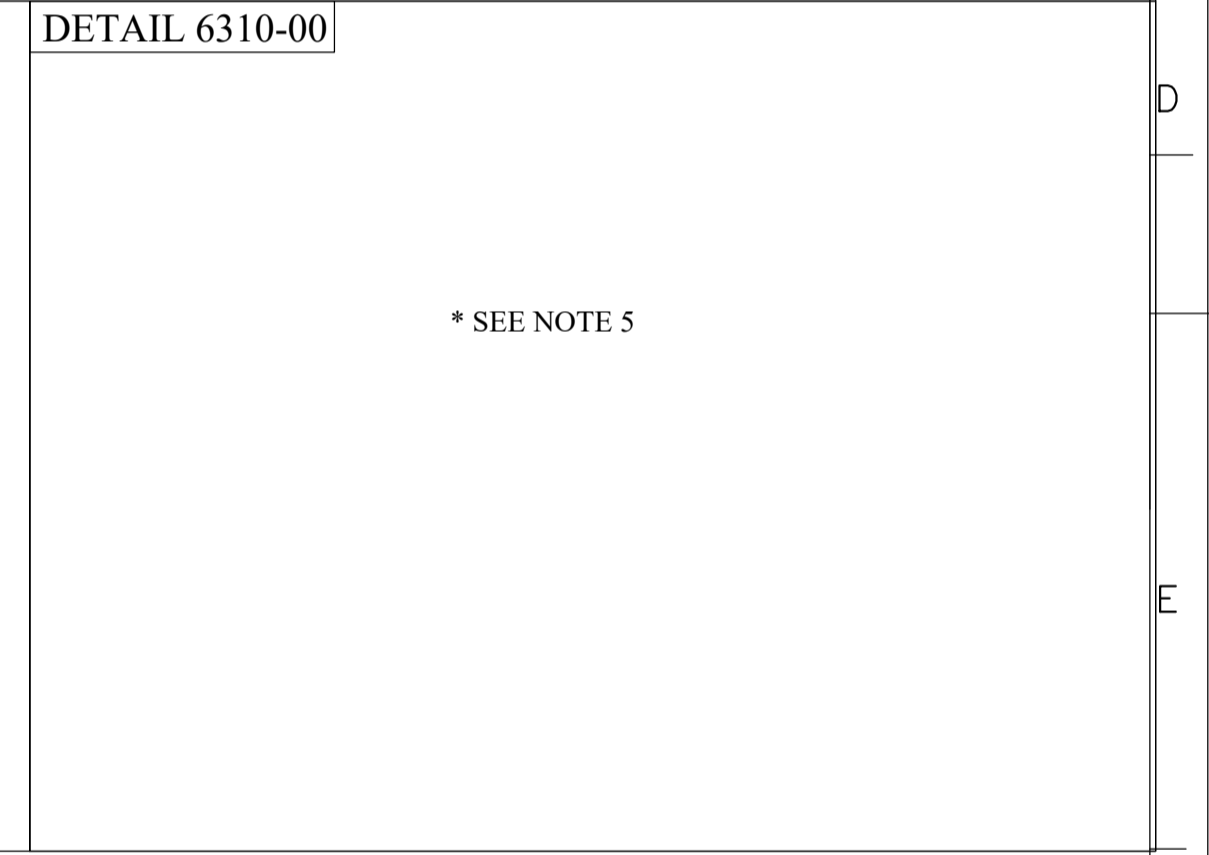
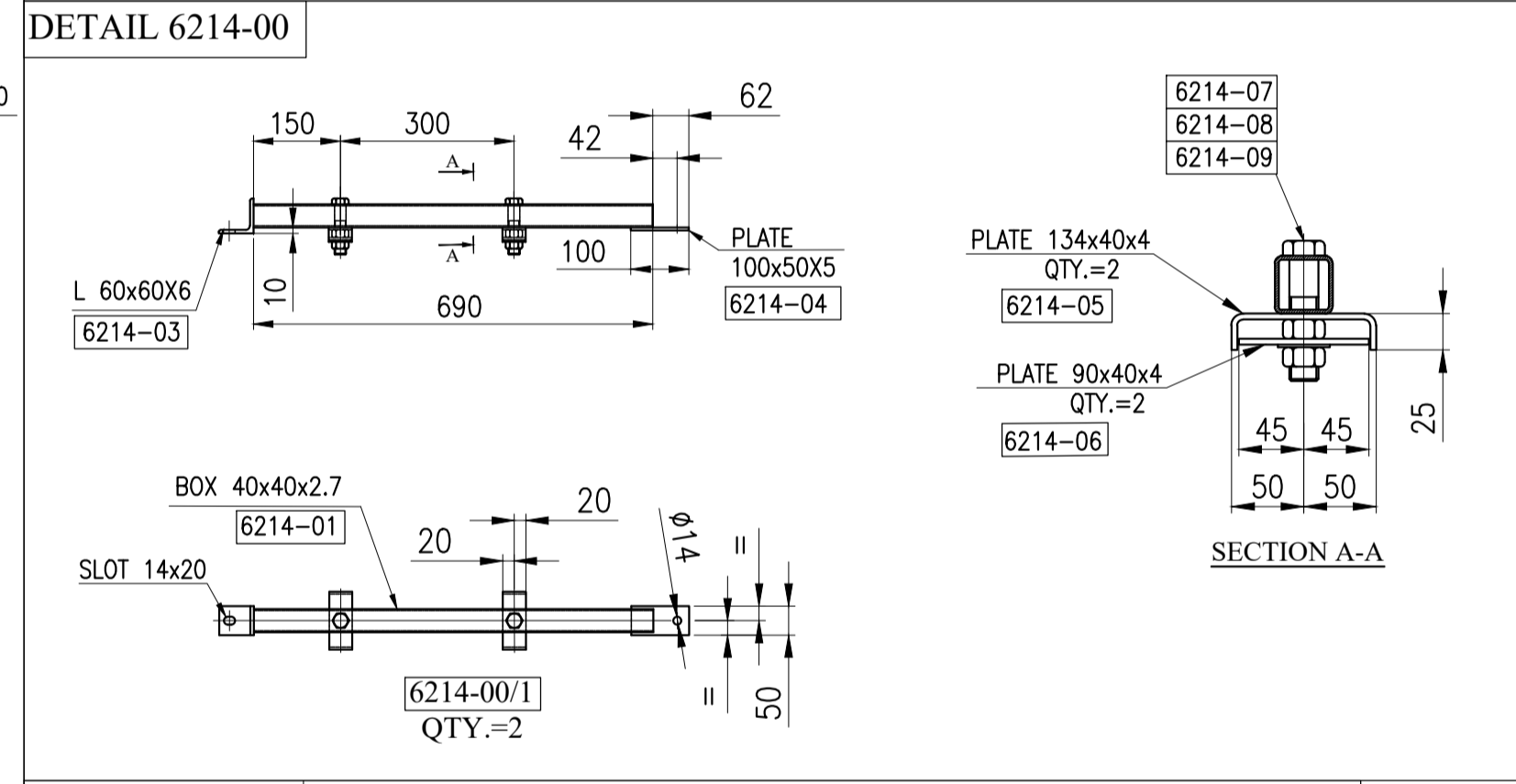
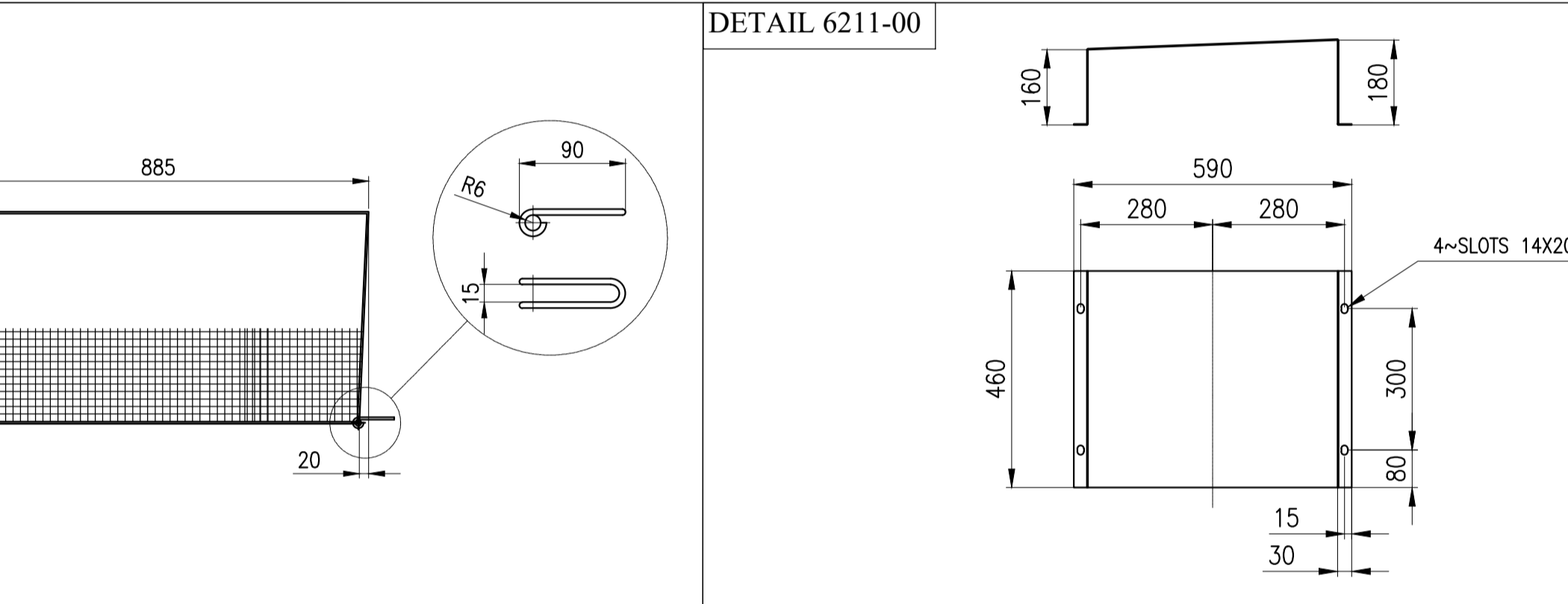
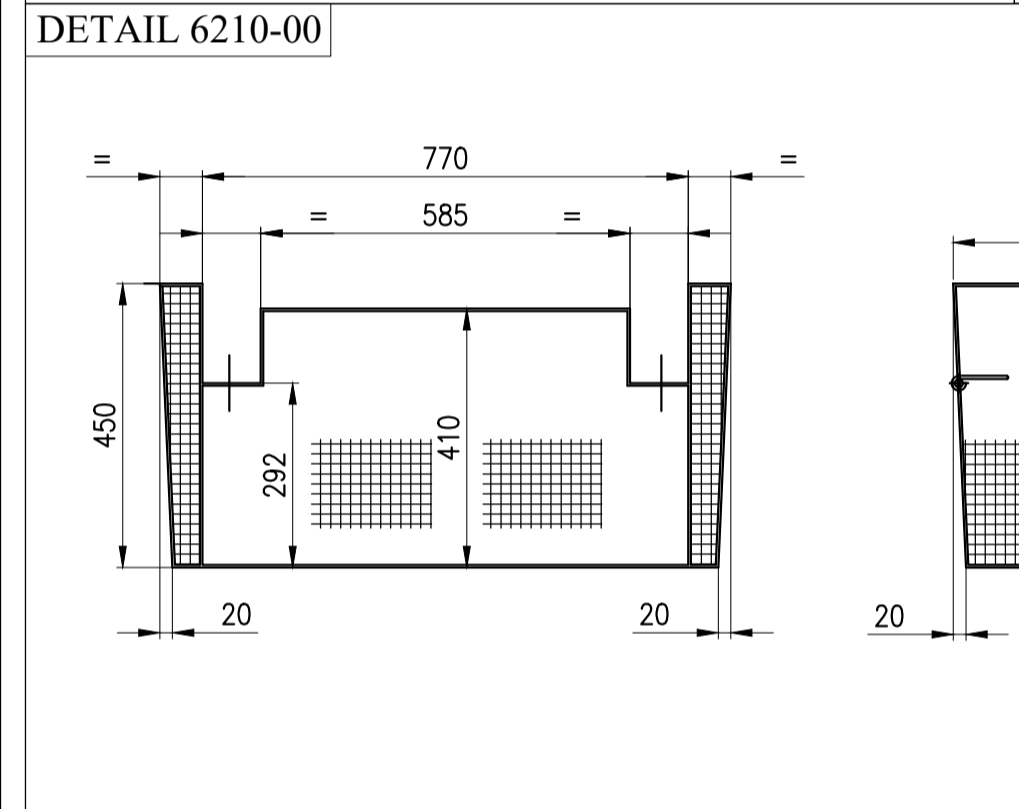
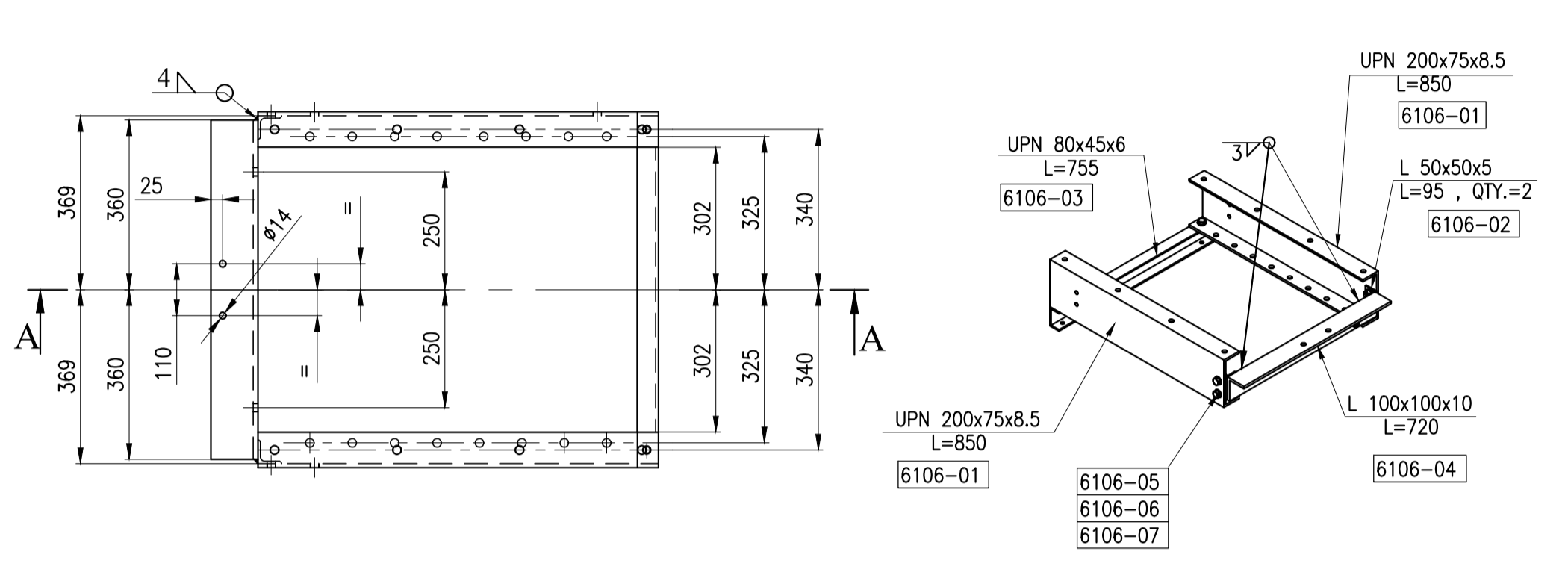
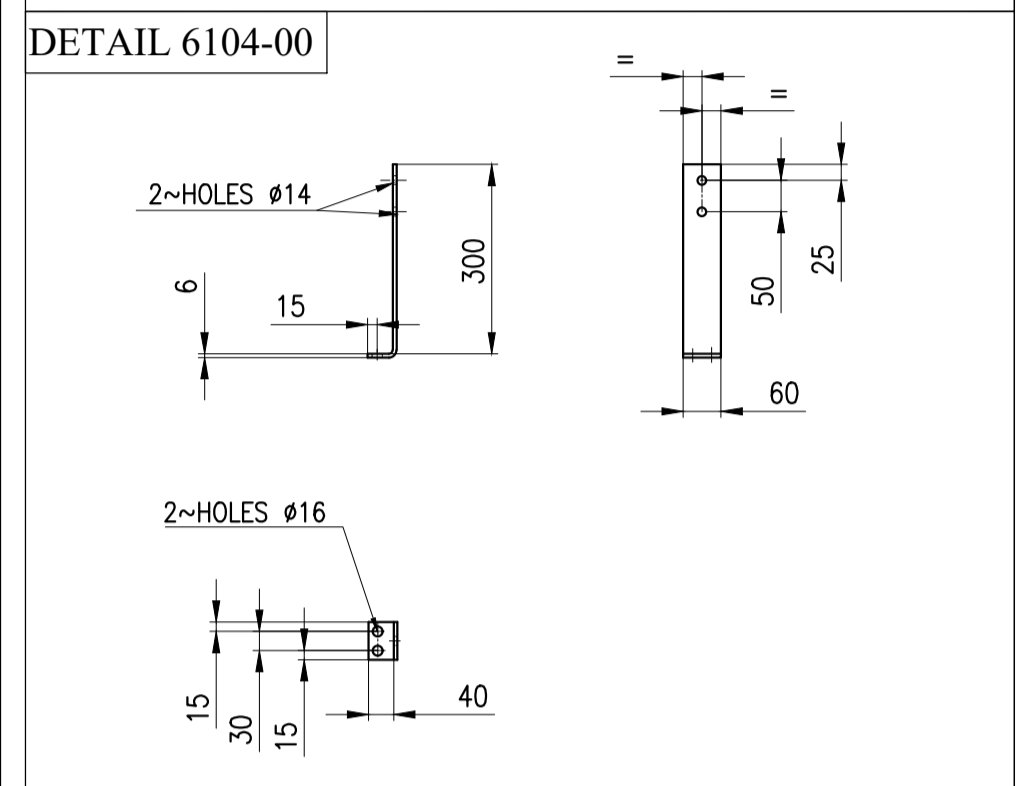
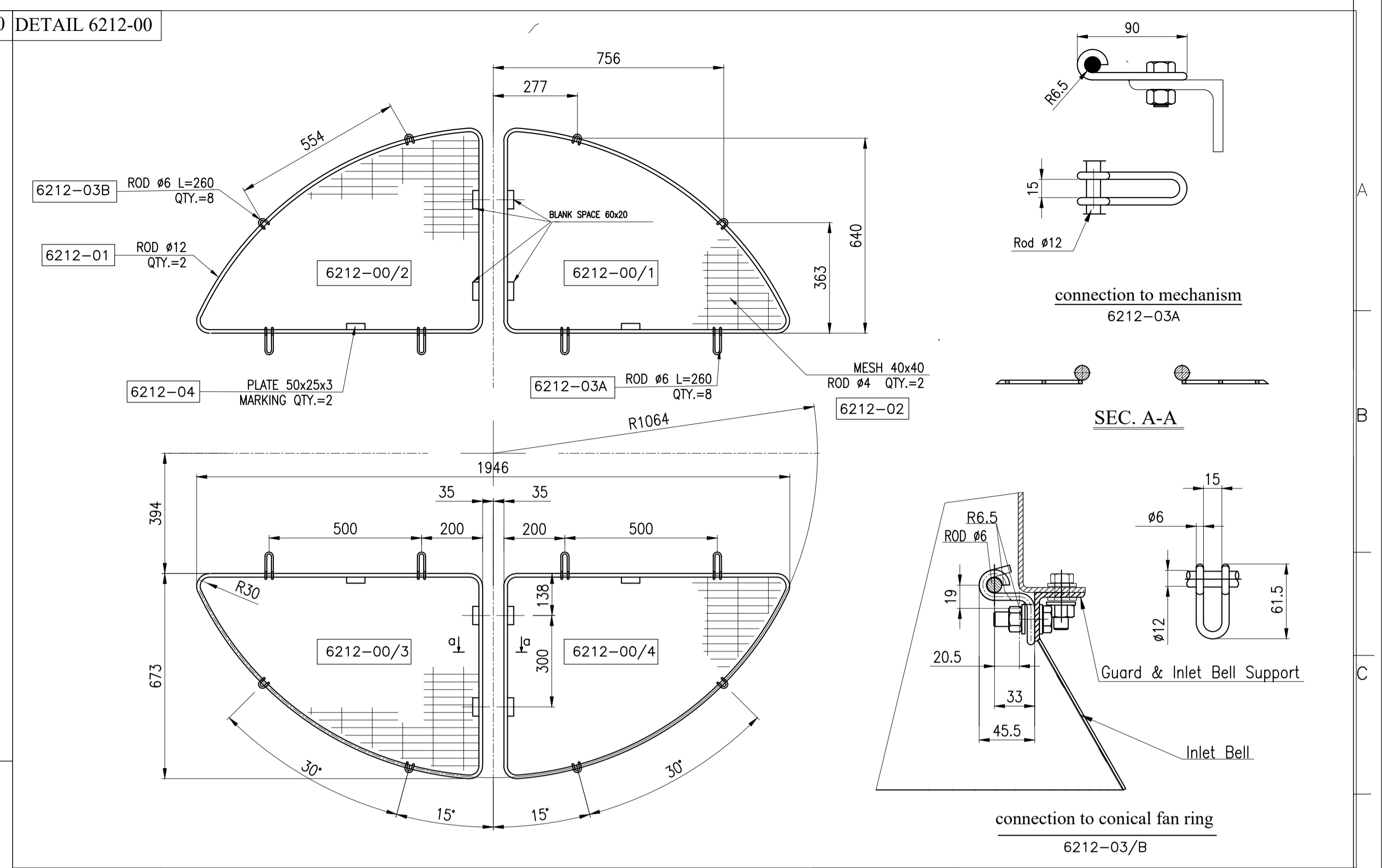
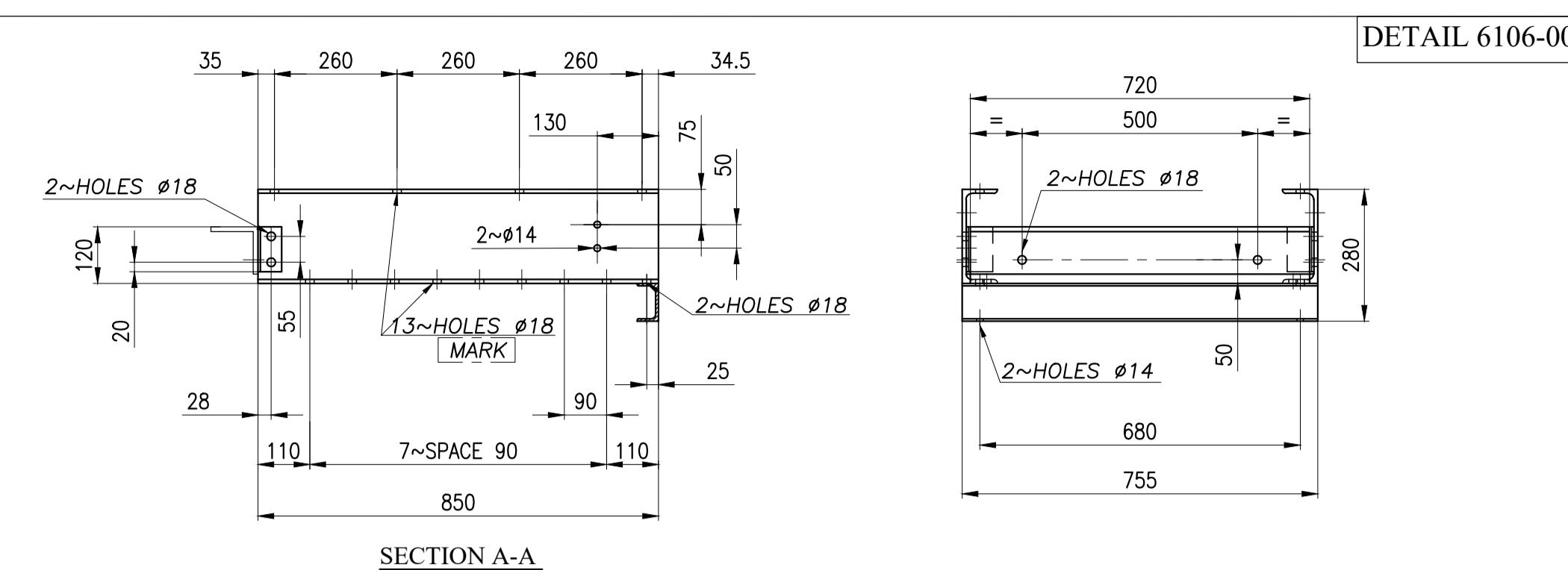
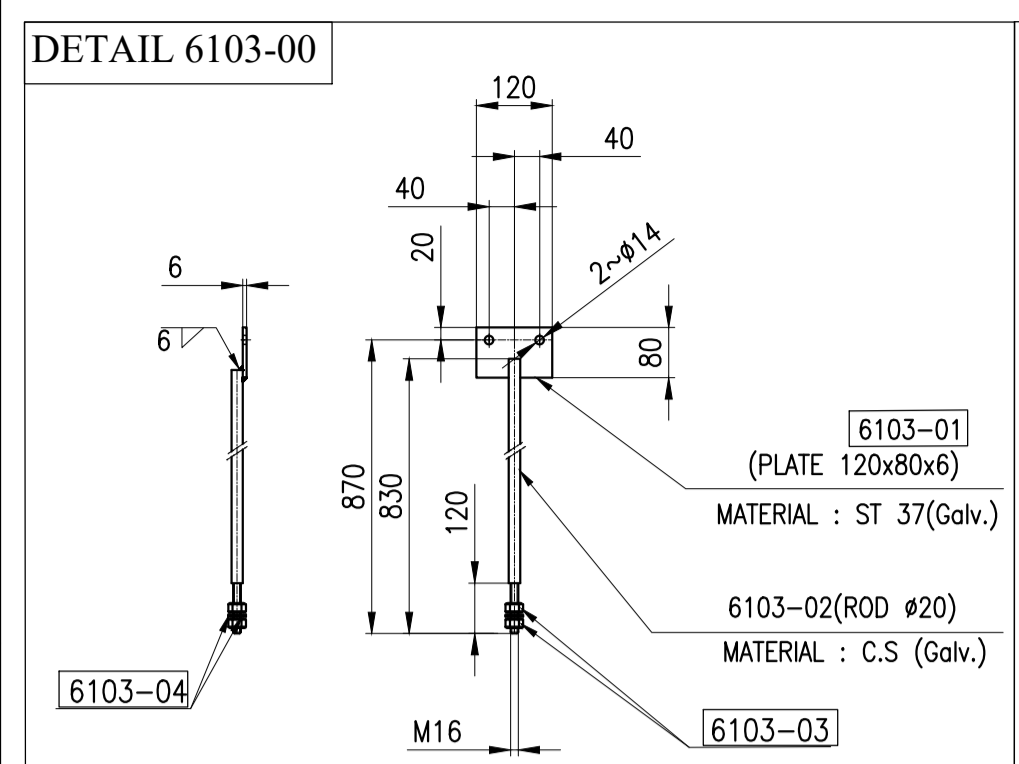
PART NO.	DESCRIPTION	DIMENTION	MATERIAL	QTY.	UNIT WEIGHT (Kg)	TOTAL WEIGHT (Kg)	REV.
6000-00	FAN DRIVE ASSEMBLY FOR TWO UNITS	-	-	4	-	906	R1
6000-00	FAN DRIVE ASSEMBLY FOR ONE UNITS	-	-	2	-	453	R1
EACH FAN DRIVE WITH AP FAN FOR ONE SET INCLUDES :				TAP	226.5	226.5	R1
6103-00	TIE BEAM	REF. SHEET 2	ST-37(Galv)	2	2.5	5	
6104-00	LUBRICATION PIPING SUPPORT	REF. SHEET 2	ST-37(Galv)	1	1	1	
6106-00	MOTOR SUPPORTING STRUCTURE	REF. SHEET 2	ST-37(Galv)	1	61	61	
6210-00	DRIVEN PULLEY GUARD	REF. SHEET 2	ST-37(Galv)	1	10	10	
6211-00	DRIVER PULLEY GUARD	REF. SHEET 2	ST-37(Galv)	1	8	8	
6212-00	FAN GUARD, 7(F)				20	-	
6212-00/1	TRANANGULAR MESH			1	5	5	
6212-00/2	TRANANGULAR MESH			1	5	5	
6212-00/3	TRANANGULAR MESH	REF. SHEET 2	ST-37(Galv)	1	5	5	
6212-00/4	TRANANGULAR MESH			1	5	5	
6213-00	DRIVE SUPPORTING STRUCTURE GUARD, 7(F)	REF. SHEET 2	ST-37(Galv)	1	3	3	
6214-00	FAN GUARD SUPPORT	REF. SHEET 2	ST-37(Galv)	2	3	5	
6310-00	MOTOR PLATE	REF. SHEET 2	ST-37(Galv)	1	-	-	
6510-00	FAN UNIT DIA (7 Ft) BLADE NO=4	REF. DSH.	Manufacturer standard	1	-	-	
6610-00	MOTOR (7.5 KW -ELECTRIC-Exe.IB-T3-IP55)	REF. DSH.	Manufacturer standard	1	-	-	
6711-00	DRIVER PULLEY P11028PA2/PB11028PA2	REF. DSH.	GG20/ASTM A48-94a	1	-	-	
6712-00	DRIVEN PULLEY P14005PA2/PB14005PA2	REF. DSH.	GG20/ASTM A48-94a	1	-	-	
6713-00	BELT CAPXPA2332 CD-754.3	REF. DSH.	Manufacturer standard	2	-	-	
6716-00	SPACER BETWEEN MOTOR&PULLEY	REF. SHEET 2	ST-37(Galv)	1	0.3	0.3	
6771-00	SHAFT & BEARING BLOCK	REF. DSH.	Manufacturer standard	1	103	103	
6821-00	VIBRATION SWITCH(HOLD)	REF. DSH.	Manufacturer standard	1	-	-	R1
6822-00	VIBRATION SWITCH SUPPORT (HOLD)	REF. SHEET 2	ST-37(Galv)	1	2	2	R1
6840-00	TENSIONING BOLT	M16	C.S.CL. 8.8(GALV.)JA36	2	1	2	
6851-00	UNION FEMALE CONNECTOR(1/8" NPT-8mm(TUBE))	REF. SHEET 2	S.S.904L	2	0.1	0.2	
6852-00	TUBE (OD=8 mm,ID=6)	4000	S.S.904L	1	-	-	
6855-00	UNION MALE CONNECTOR(1/4" NPT-8mm(TUBE))	REF. DSH.	S.S.904L	2	-	-	
6856-00	GREASE NIPPLE (1/8" NPT)	REF. DSH.	S.S.904L	2	-	-	
6860-00	CLAMP	REF. SHEET 2	C.S(DALV.)JA36	2	1	2	
6865-00	CLAMP	REF. SHEET 2	C.S(DALV.)JA36	4	1	4	
BOLT & NUT & WASHER FOR ASSEMBLY PARTS AP FAN:				1SET	4SET		
6103-03	NUT FOR TIE BEAM	M16	DN 934-CL.8 (Dacromet)	4	16		
6103-04	WASHER	A17	DN 125 A17 St (Dacromet)	4	16		
6106-05	BOLT FOR FAN GUARD SUPPORT	M16x40	DN 933 CL.8.8 (Dacromet)	6	24		
6106-06	NUT	M16	DN 934-CL.8 (Dacromet)	12	48		
6106-07	WASHER	A17	DN 125 A17 St (Dacromet)	6	24		
6840-02	NUT FOR TENSIONING BOLT	M16	DN 934-CL.8 (Dacromet)	4	16		
6840-03	WASHER	A17	DN1434-18-ST(8%) (Dacromet)	2	8		
6840-04	WASHER	A17	DN 125 A17 St (Dacromet)	2	8		
6860-02	BOLT FOR CLAMP	M16x55	DN 933 CL.8.8 (Dacromet)	6	24		
6860-03	NUT	M16	DN 934-CL.8 (Dacromet)	6	24		
6860-04	WASHER	A17	DN 125 A17 St (Dacromet)	12	48		
6865-02	BOLT FOR CLAMP	M16x55	DN 933 CL.8.8 (Dacromet)	8	32		
6865-03	NUT	M16	DN 934-CL.8 (Dacromet)	16	64		
6865-04	WASHER	A17	DN 125 A17 St (Dacromet)	16	64		
BOLT & NUT & WASHER FOR ASSEMBLY PART (FAN DRIVE TO PROJECT LOCATION)				1SET	4SET		
6910-01	BOLT	M12x40	DN 933 CL.8.8 (Dacromet)	36	144		
6910-02	NUT	M12	DN 934-CL.8 (Dacromet)	36	144		
6910-03	WASHER	A13	DN 125 A17 St (Dacromet)	72	288		
6920-01	BOLT FOR MOTOR TO MOTOR PLATE	M18x70	DN 933 CL.8.8 (Dacromet)	4	16		
6920-02	NUT	M16	DN 934-CL.8 (Dacromet)	4	16		
6920-03	WASHER	A17	DN 125 A17 St (Dacromet)	4	16		
6930-01	BOLT FOR VIBRATION SWITCH SUPPORT	M8x30	DN 933 CL.8.8 (Dacromet)	4	16		
6930-02	NUT	M8	DN 934-CL.8 (Dacromet)	4	16		
6930-03	WASHER	A9	DN 125 A17 St (Dacromet)	8	32		
6940-01	BOLT FOR BEARING BLOCK TO SUPPORT MECHANISM	M16x65	DN 933 CL.8.8 (Dacromet)	6	24		
6940-02	NUT	M16	DN 934-CL.8 (Dacromet)	6	24		
6940-03	WASHER	A17	DN 125 A17 St (Dacromet)	6	24		
6940-04	WASHER	A17	DN1434-18-ST(8%) (Dacromet)	6	24		

* FOR MORE DETAILS FOR EACH COMPONENT OF AIR COOLER REFER TO BELOW DRAWING & DOCUMENTS.

REFERENCED DWG&DOC.		
TITLE	VENDOR DOCUMENT NO.	CLIENT DOCUMENT NO.
General Arrangement Drawing	1158-A01-1000-00	EI027-DMF-VD-ME-DWG-003
Plenum Drawing	1158-A01-5110-00	EI027-DMF-VD-ME-DWG-011
Fan Ring Drawing	1158-A01-5067-00	EI027-DMF-VD-ME-DWG-009
Support Mechanism Drawing	1158-A01-6307-00	EI027-DMF-VD-ME-DWG-010
Steel Structure Drawing	1158-A01-1100-00	EI027-DMF-VD-ST-DWG-013
Surface Preparation and Painting Procedure	1158-A01-0901-00	EI027-DMF-VD-QC-PRO-024

REFERENCE DSH.		
TITLE	VENDOR DOCUMENT NO.	CLIENT DOCUMENT NO.
Axial Fan Data Sheet	1158-A01-6510-00	EI027-DMF-VD-ME-DSH-016
Electrical Motor Data Sheet	1158-A01-6610-00	EI027-DMF-VD-EL-DSH-017
Belt & Pulley Data Sheet	1158-A01-6710-00	EI027-DMF-VD-ME-DSH-018
Vibration Switch Data Sheet	1158-A01-6800-00	EI027-DMF-VD-IN-DSH-019

R1	08/20/2024	ISSUED FOR APPROVAL	F.SZ	F.A	J.B.L	A.GHZ
R0	08/07/2024	ISSUED FOR APPROVAL	F.SZ	F.A	J.B.L	A.GHZ
REV	DATE	DESCRIPTION	DRAWN BY	CHECKED BY	APPROVED BY	FINAL APPROVED BY
CLIENT:			CONTRACTOR:			
PROJECT : AIR COOLER FOR Toase-che Park Sanati Gohar Ofogh Petrochemical Co. Fan Drive Assembly Drawing 1158-A01-6000-00 (SHEET 1 OF 2)						
DWG. NO.		E1027-DMF-VD-ME-DWG-008				
SCALE :		N.T.S.		SIZE :		REV. : R1
THIS DOCUMENT OF A CONFIDENTIAL NATURE IS THE PROPERTY OF DAMAFIN AND SHALL NOT BE REPRODUCED IN ANY MANNER, NOR USED FOR ANY PURPOSE WHAT SO EVER, EXCEPT BY WRITTEN PERMISSION OF DAMAFIN.						



RI	08/20/2024	ISSUED FOR APPROVAL	F.SZ	F.A	J.B.L	A.GHZ
RO	08/07/2024	ISSUED FOR APPROVAL	F.SZ	F.A	J.B.L	A.GHZ
REV	DATE	DESCRIPTION	DRAWN BY	CHECKED BY	APPROVED BY	FINAL APPROVED BY
CLIENT:			CONTRACTOR:			
PROJECT : AIR COOLER FOR Toase-che Park Sanati Gohar Ofogh Petrochemical Co. Fan Drive Assembly Drawing 1158-A01-6000-00 (SHEET 2 OF 2)						
DWG. NO.	EI027-DMF-VD-ME-DWG-008		SCALE :	N.T.S.	SIZE :	A1
SCALE :	N.T.S.	SIZE :	A1	REV :	R1	
THIS DOCUMENT OF A CONFIDENTIAL NATURE IS THE PROPERTY OF DAMAFIN AND SHALL NOT BE REPRODUCED IN ANY MANNER, NOR USED FOR ANY PURPOSE WHATSOEVER, EXCEPT BY WRITTEN PERMISSION OF DAMAFIN.						