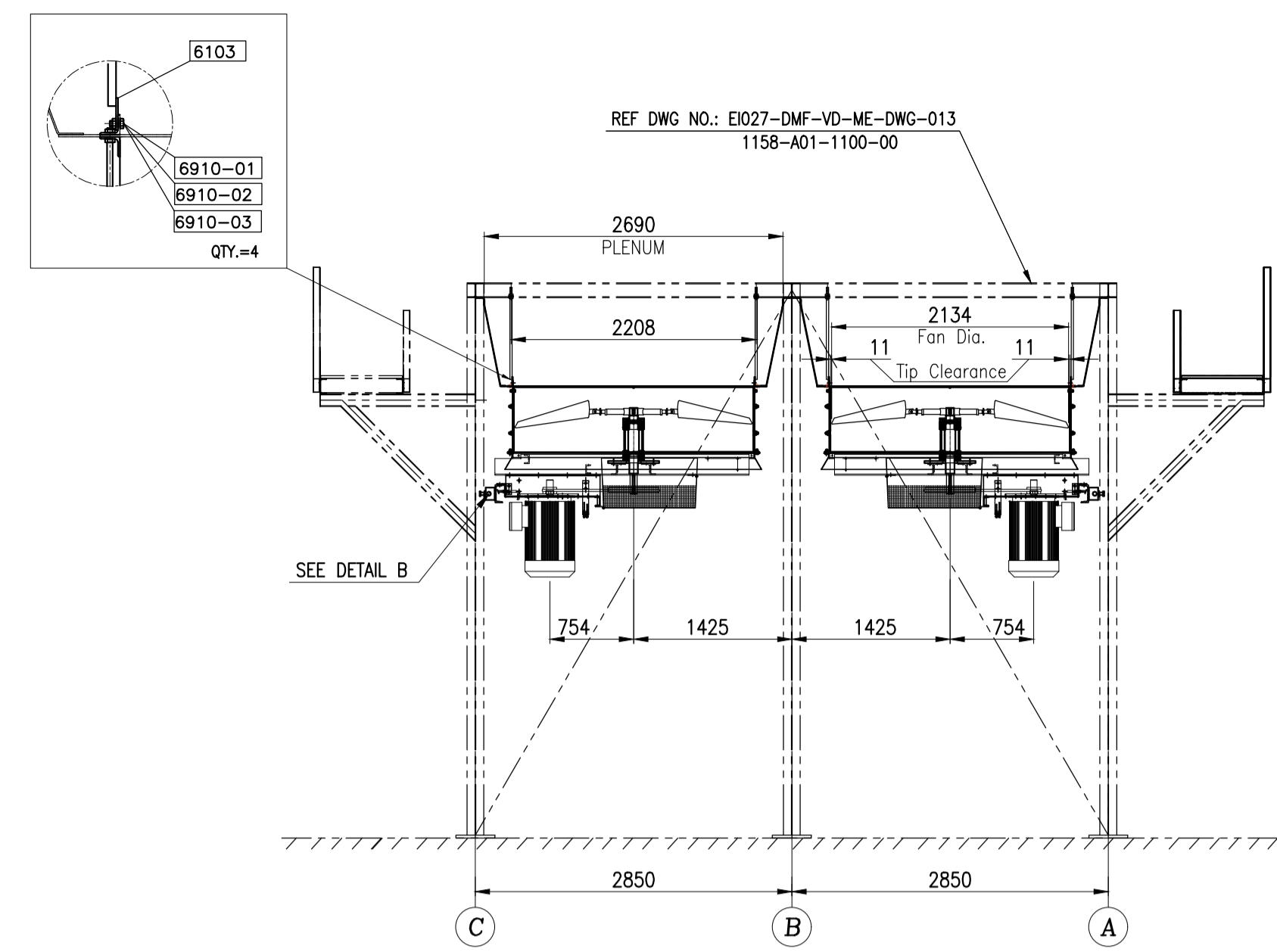
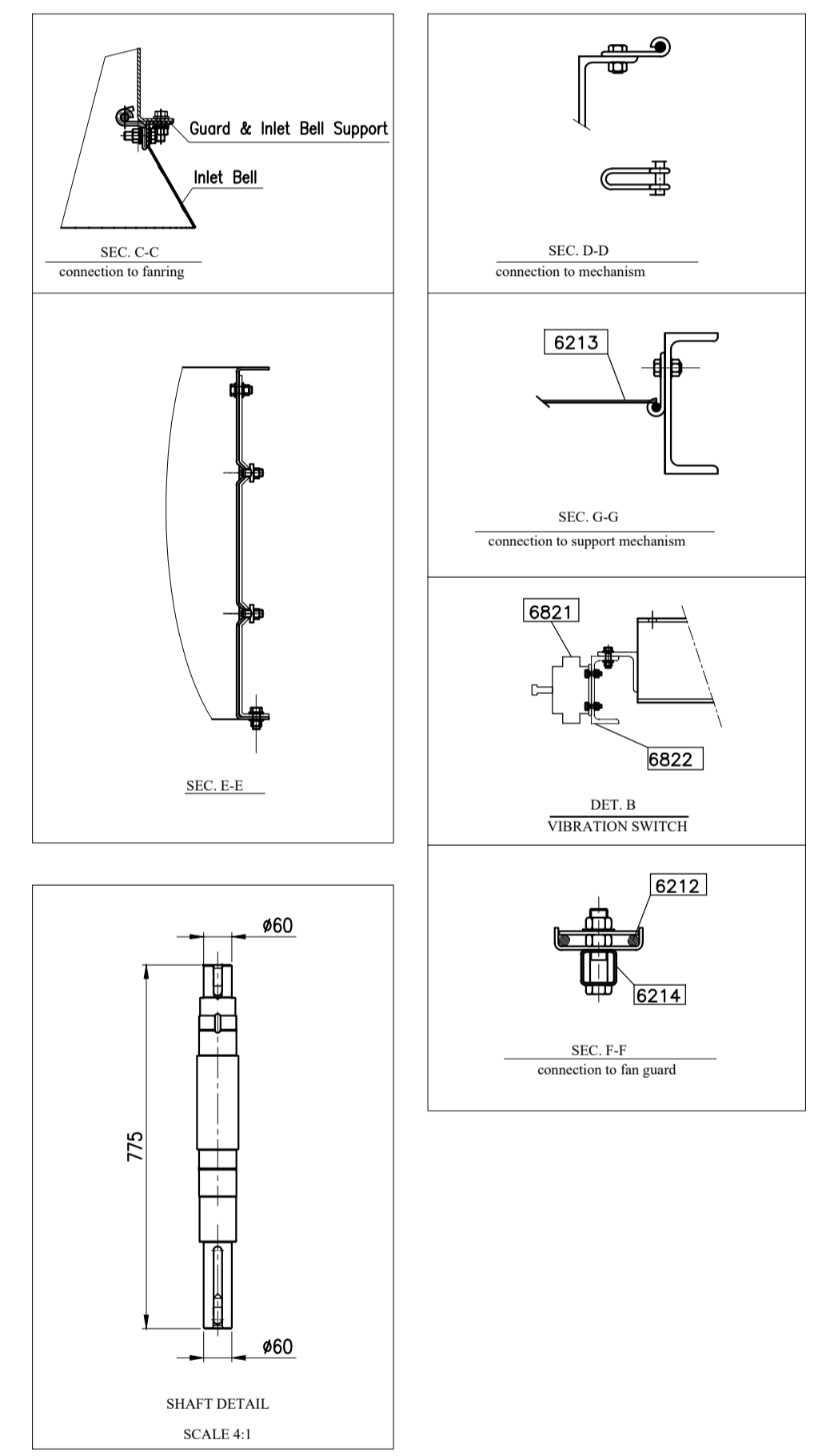
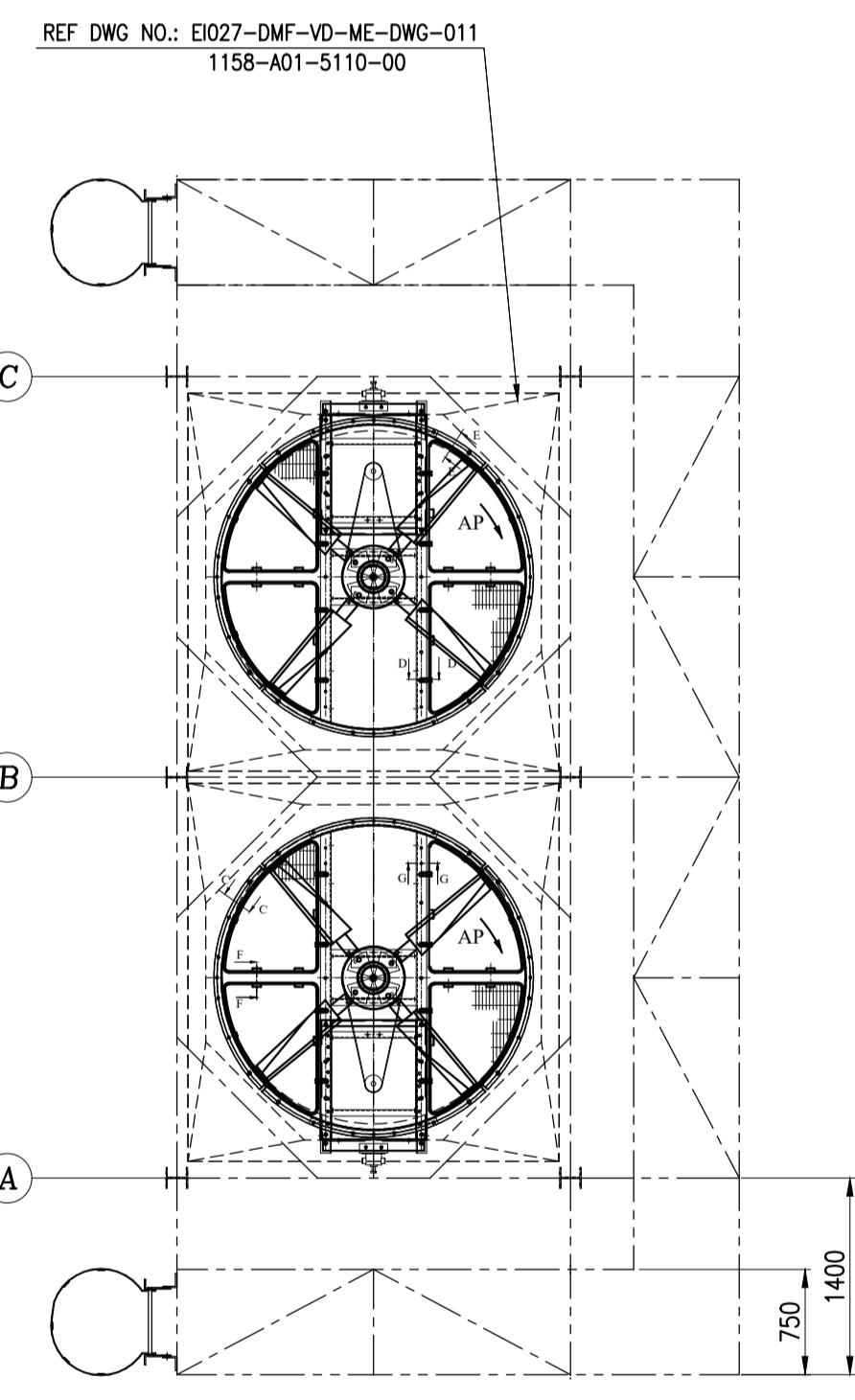


FRONT VIEW
CL. A-C

* THIS DIMENSION WILL BE FINALIZED AFTER APPROVED OF MOTOR DATA SHEET



SIDE VIEW

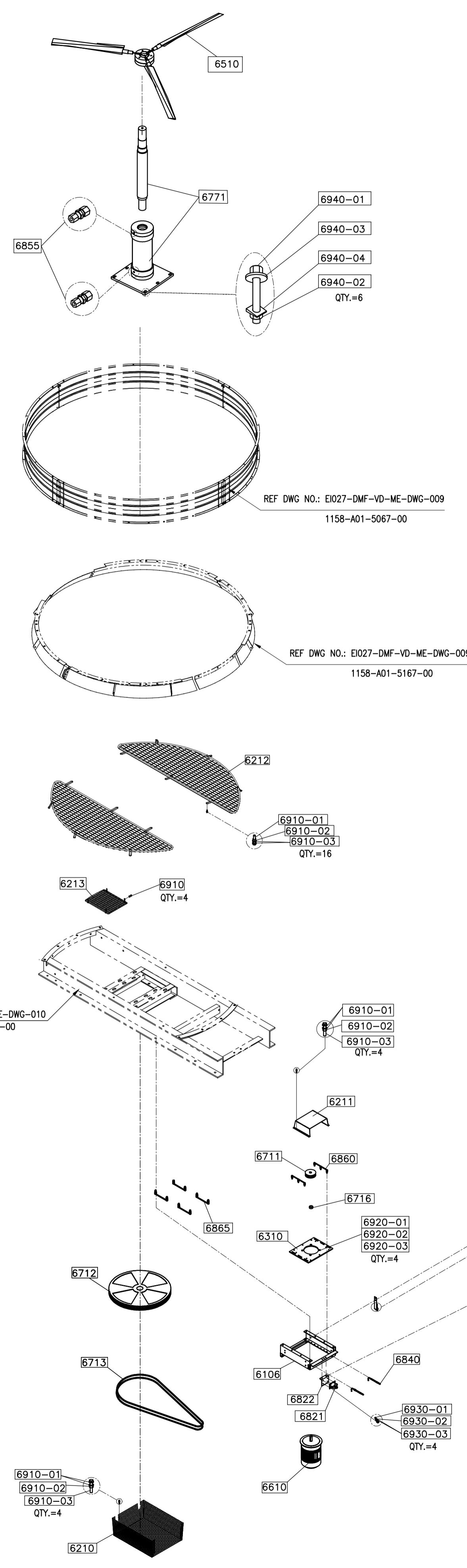


NOTE :

- 1--ALL DIMENSION ARE IN MILLIMETERS.
- 2--HOT DIP GALVANIZING SHALL BE DONE AS PER ASTM-123/ISO 1461.
- 3--ALL PARTS SHALL BE HOT DIP GALVANIZED.
- 4--BOLTS, NUTS, WASHERS, THREADS, PARTS INCLUDES THREADS SHALL BE HOT DIP GALVANIZED.
- 5--DETAILS OF THE PARTS NO. 6822-00 & 6310-00 & 6716-00 WILL BE ADDED AFTER THE MANUFACTURER HAS FINALIZED.

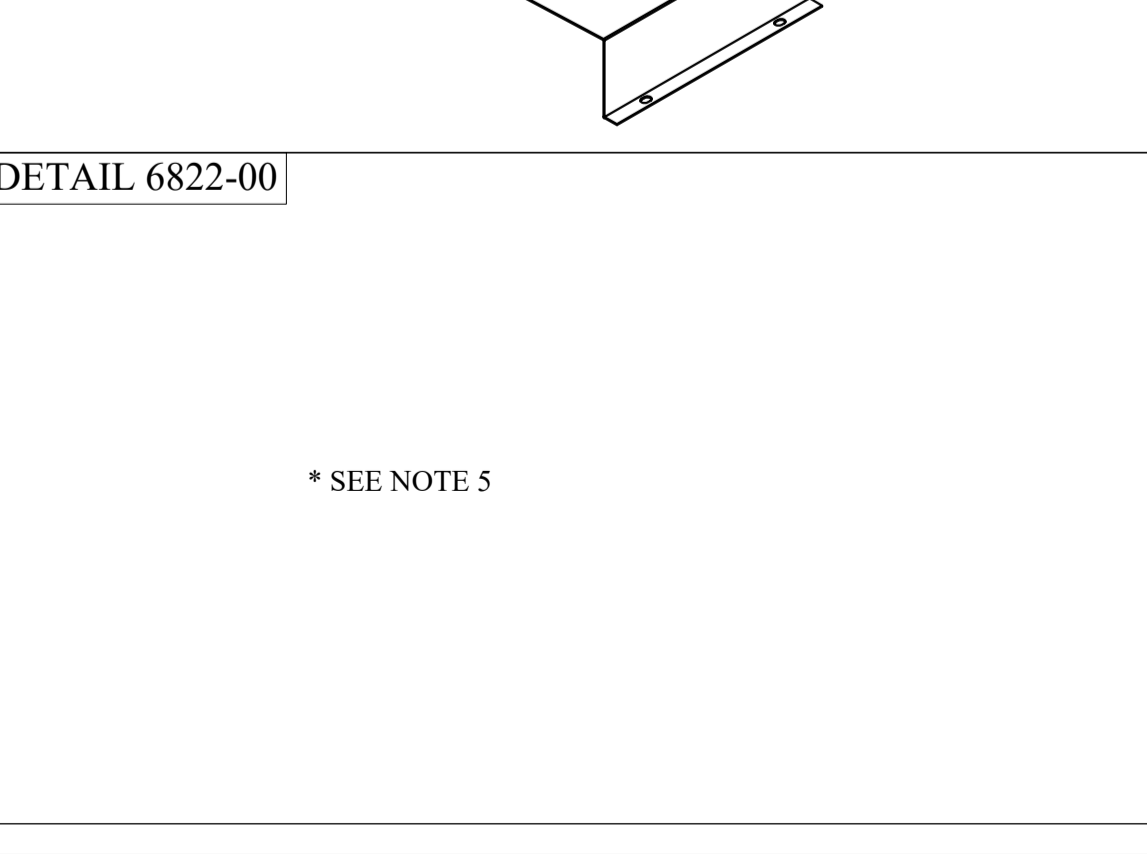
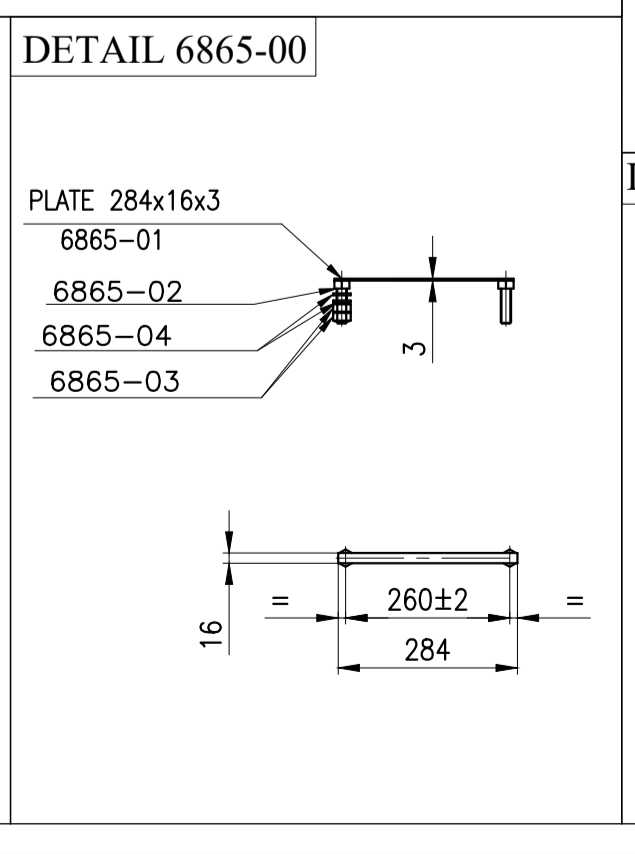
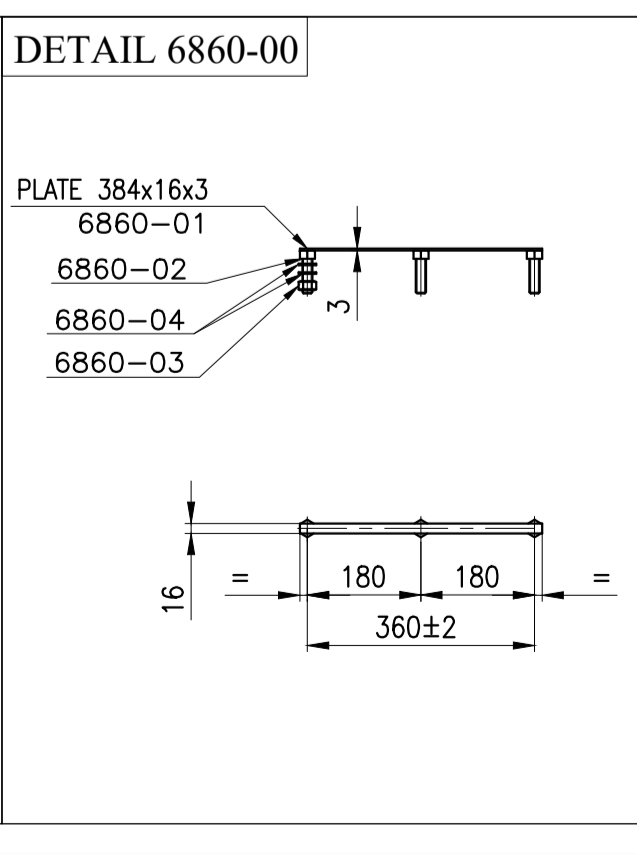
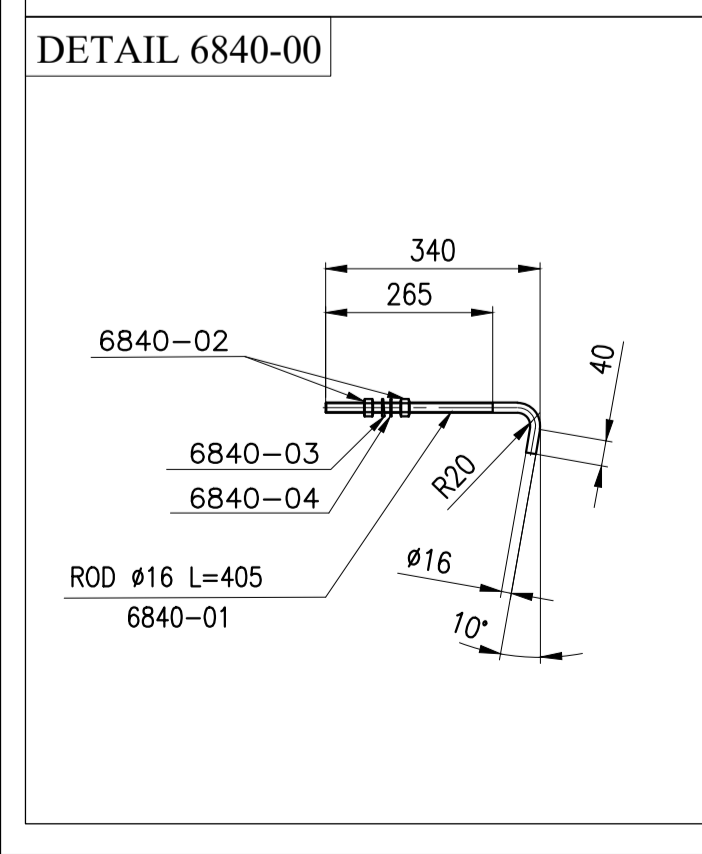
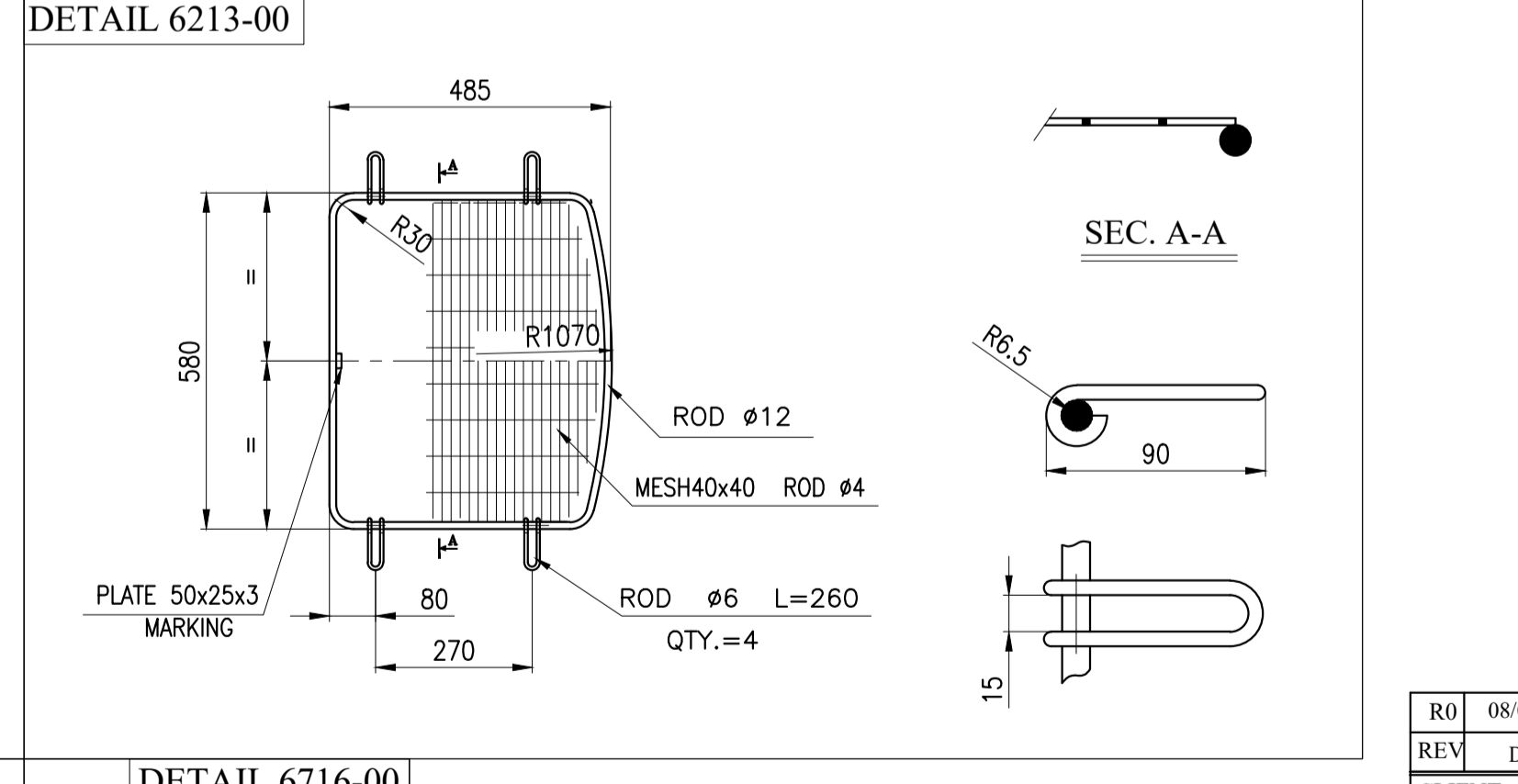
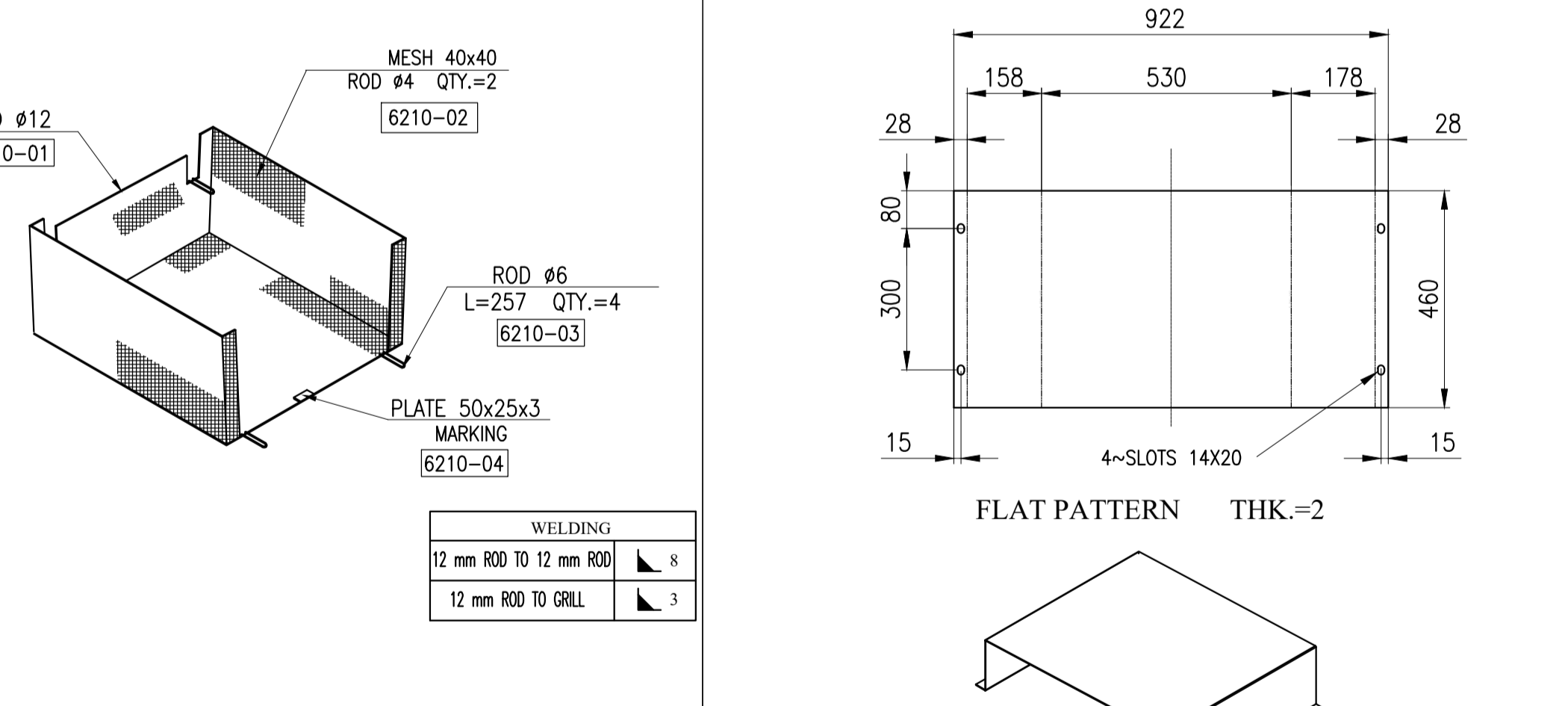
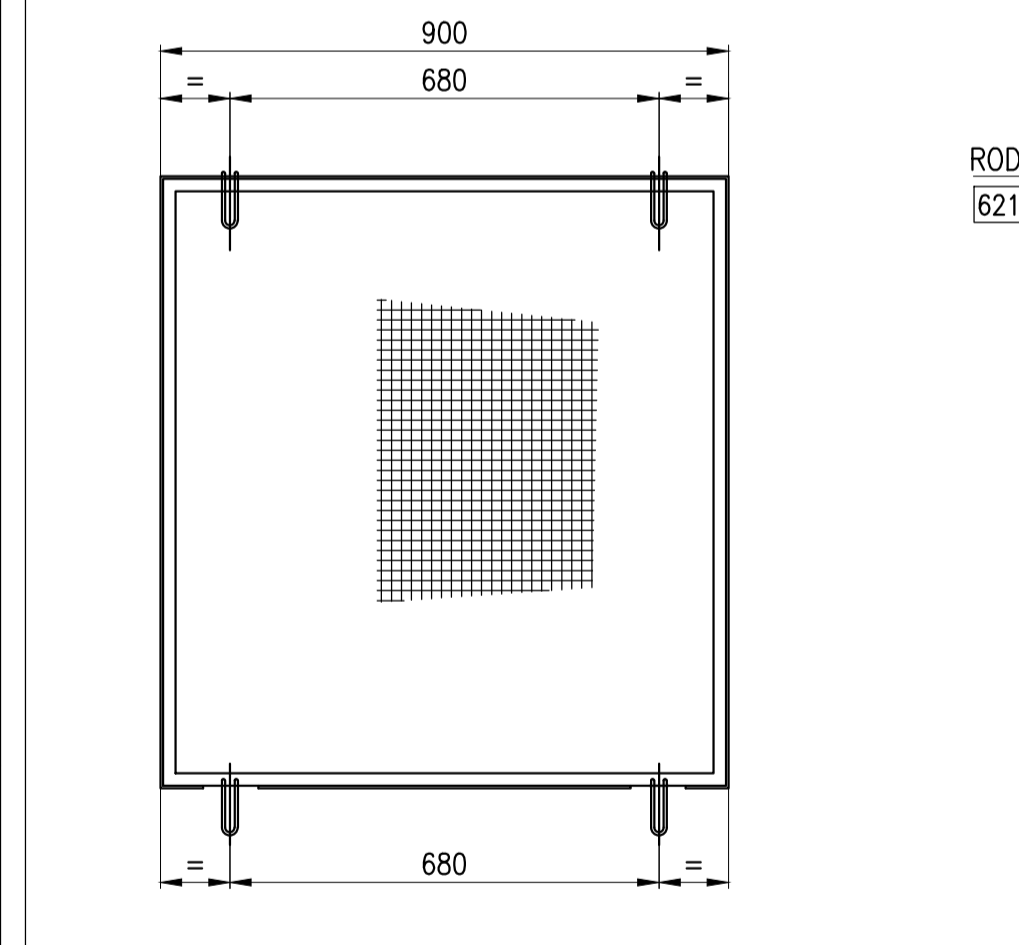
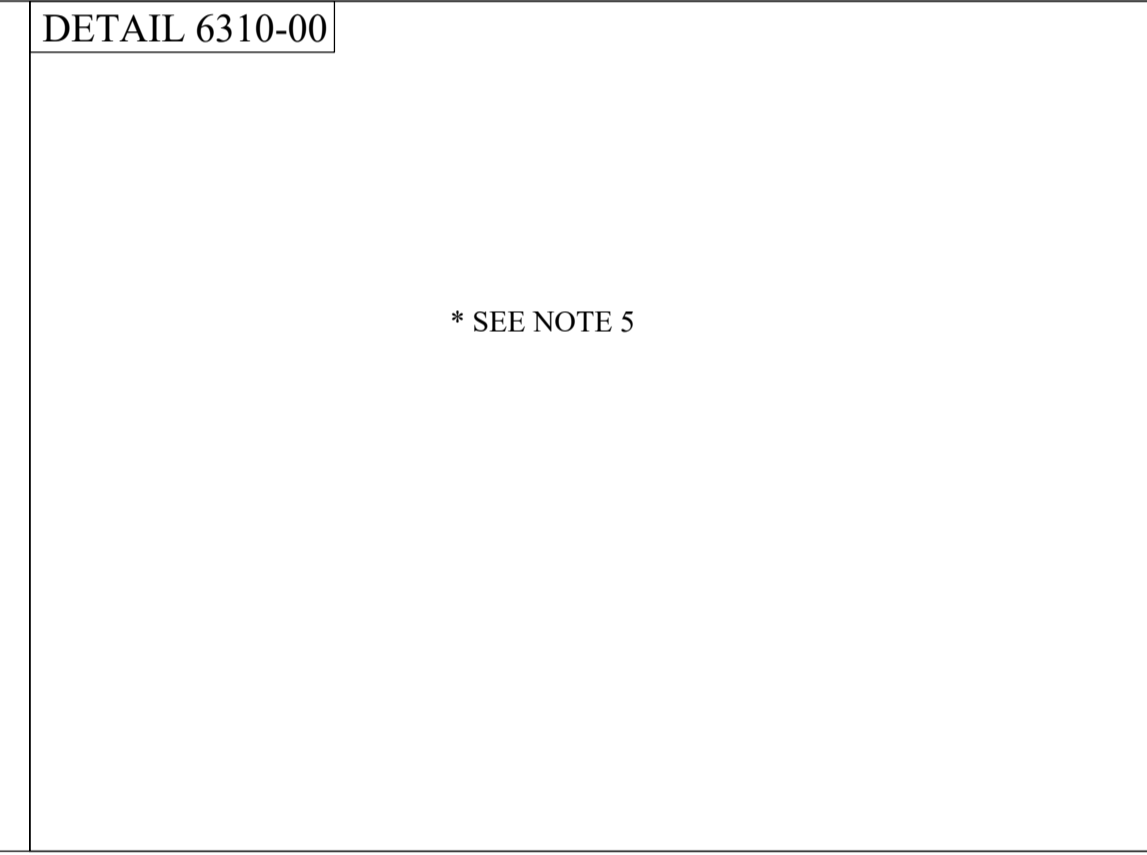
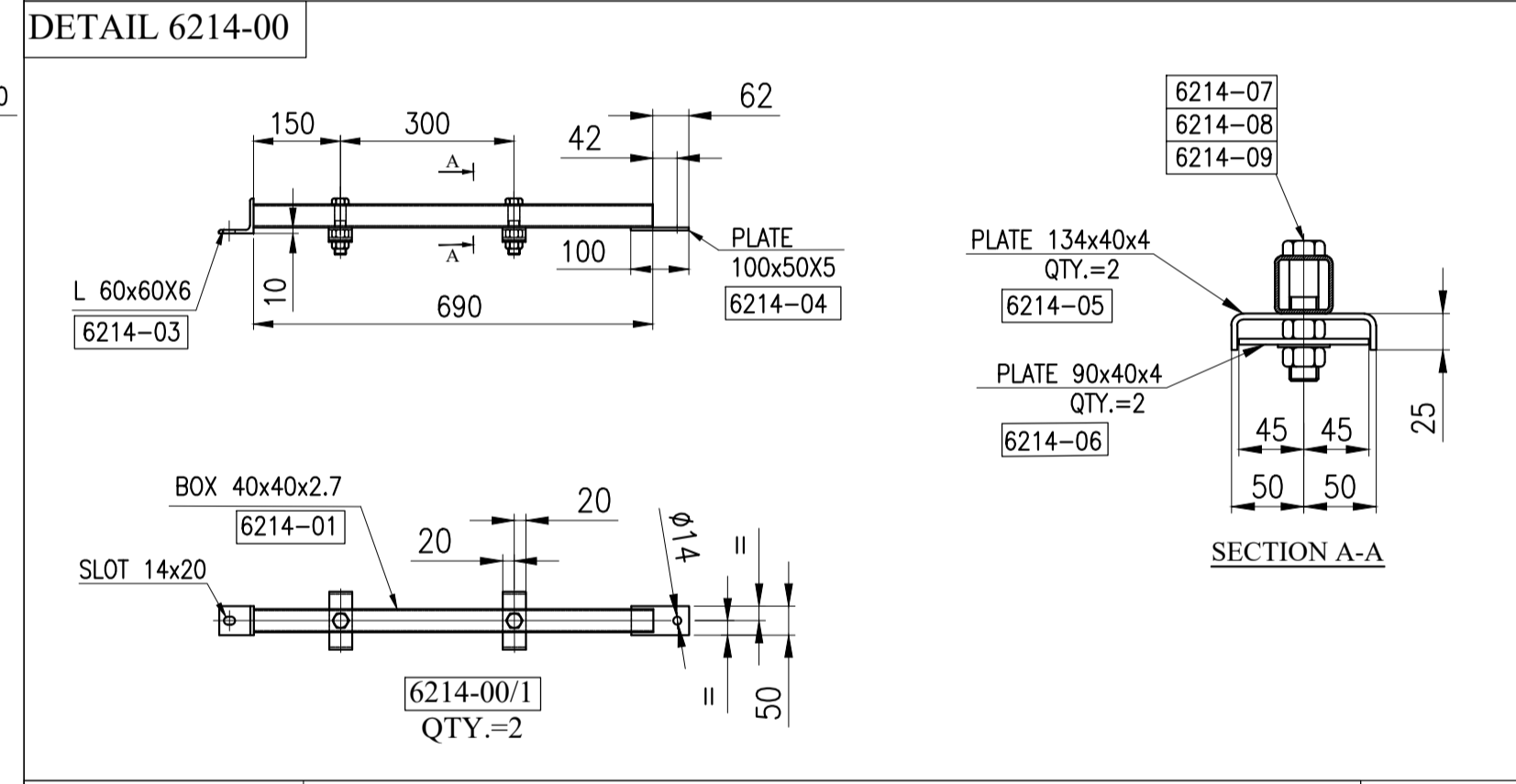
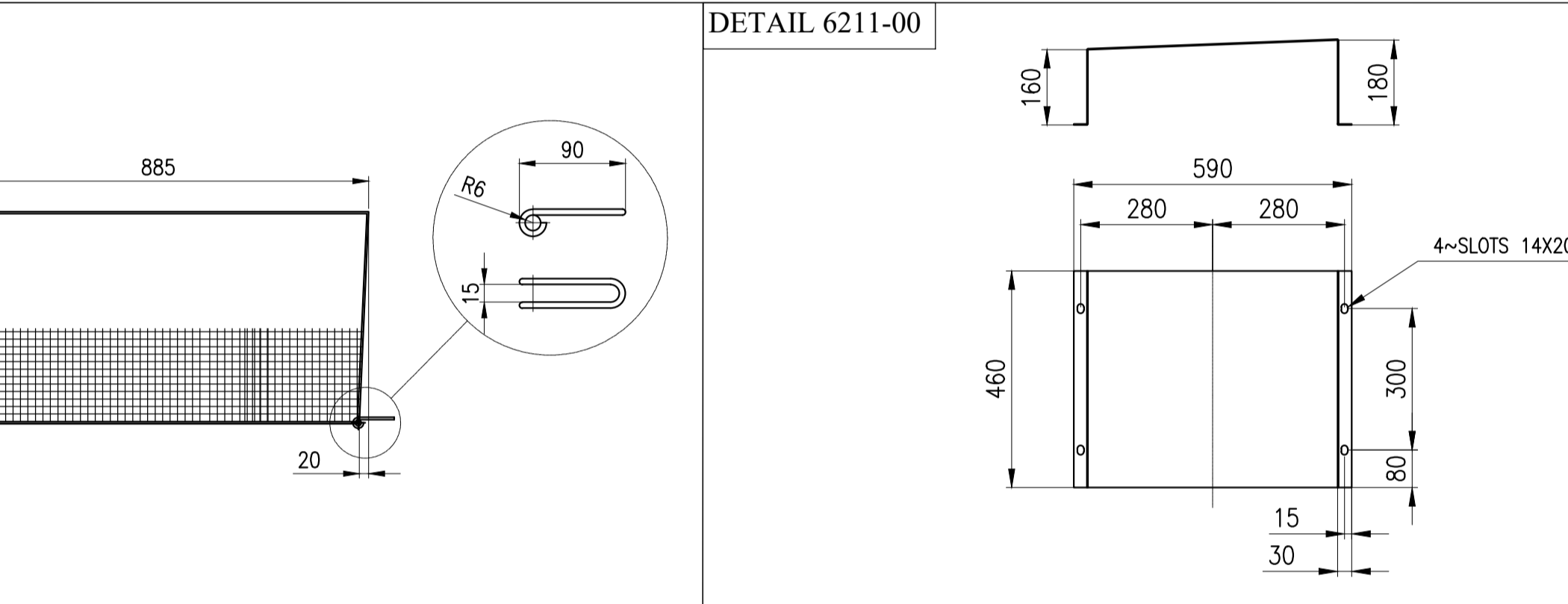
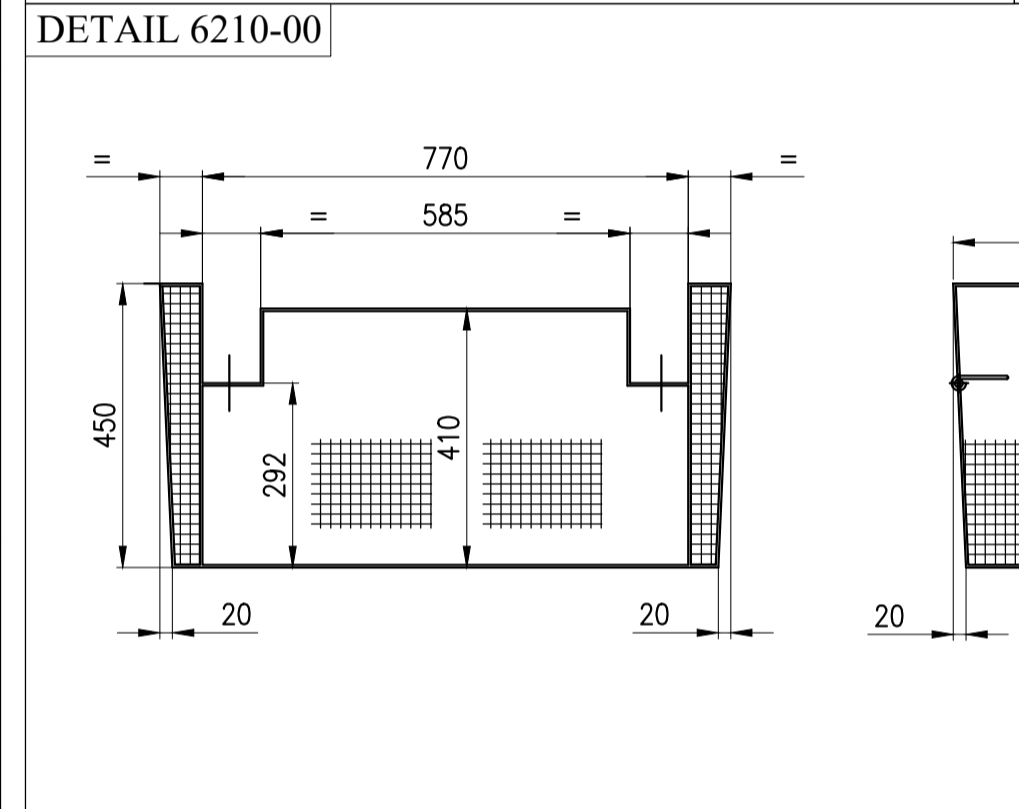
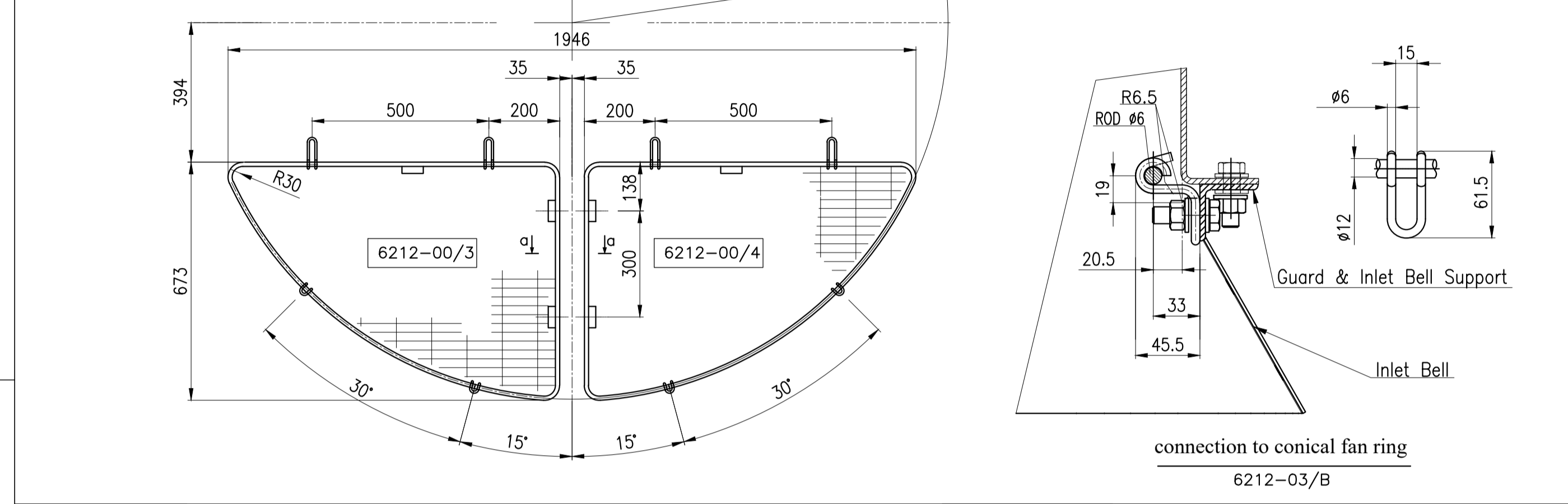
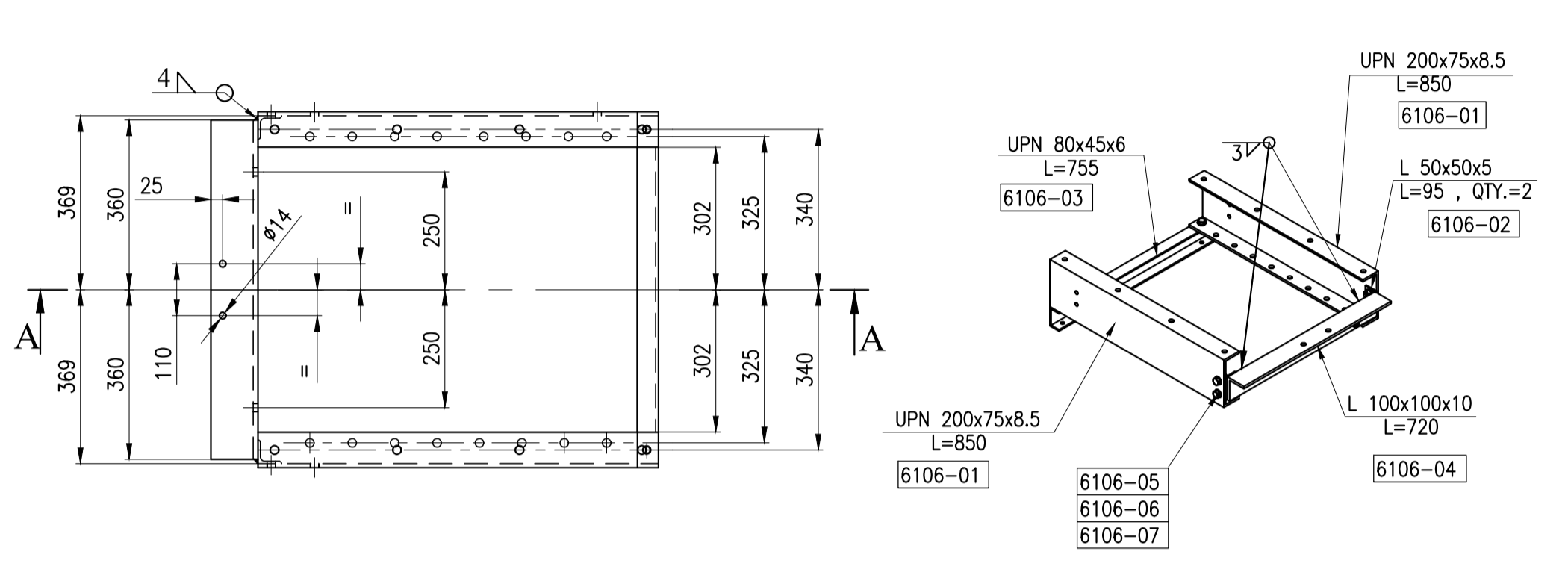
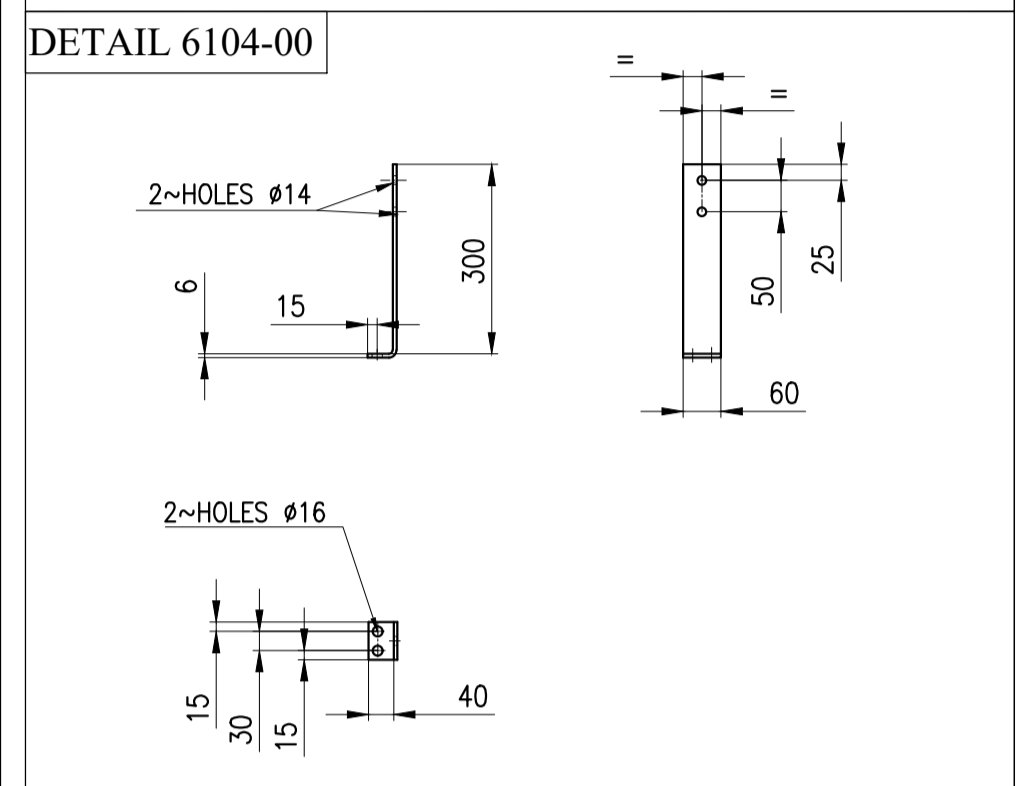
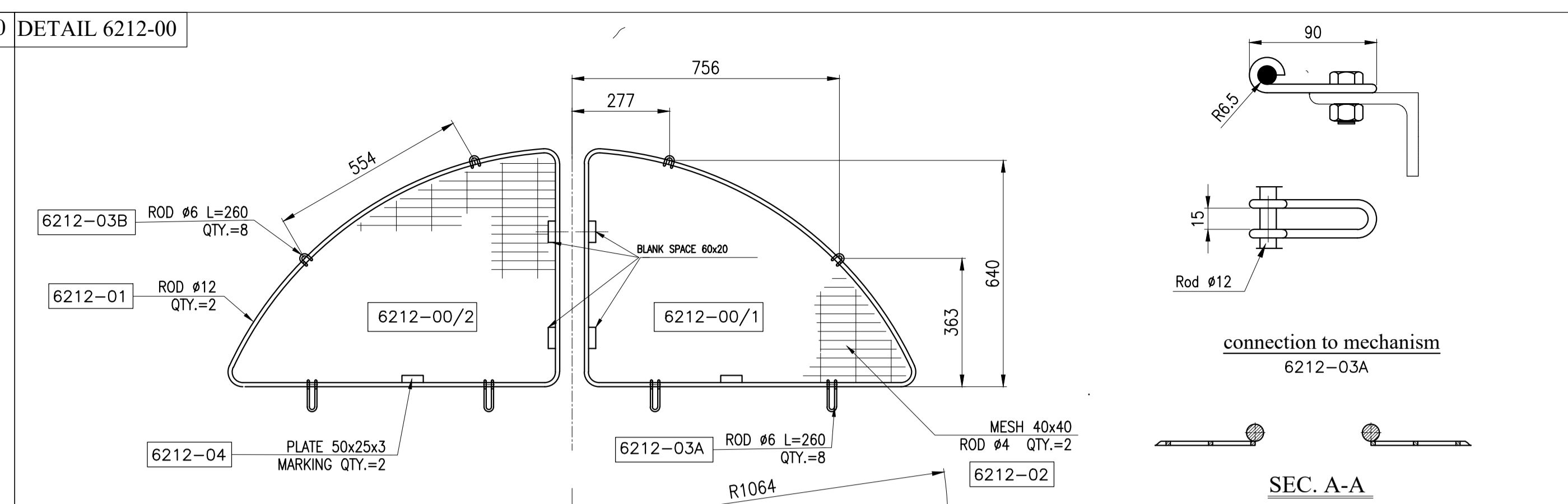
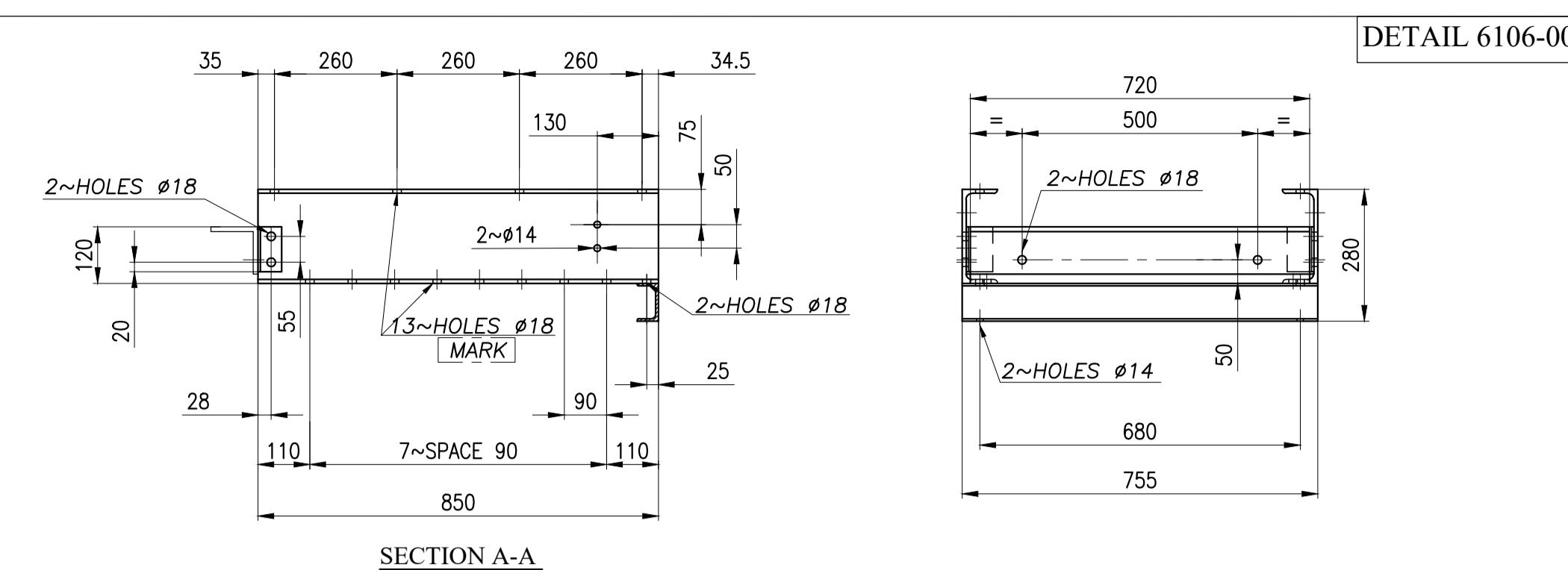
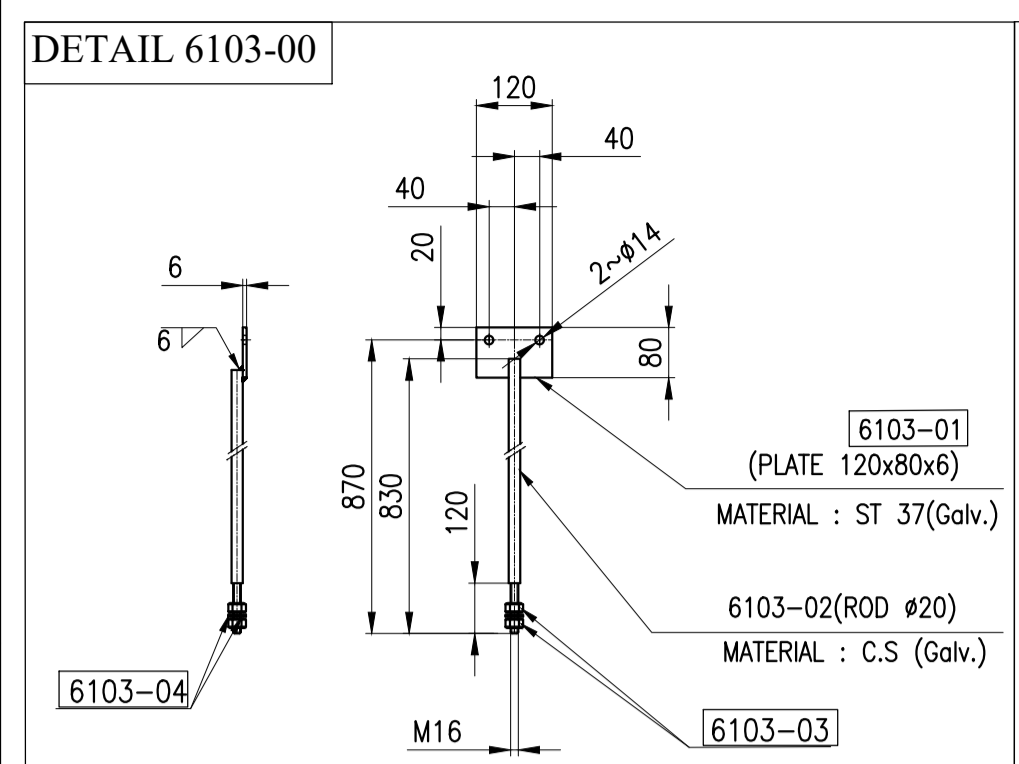
* FOR MORE DETAILS FOR EACH COMPONENT OF AIR COOLER REFER TO BELOW DRAWING & DOCUMENTS.		
REFERENCED DWG&DOC.		
TITLE	VENDOR DOCUMENT NO.	CLIENT DOCUMENT NO.
General Arrangement Drawing	1158-A01-1000-00	E027-DMF-VD-ME-DWG-003
Plenum Drawing	1158-A01-5110-00	E027-DMF-VD-ME-DWG-011
Fan Ring Drawing	1158-A01-5067-00	E027-DMF-VD-ME-DWG-009
Support Mechanism Drawing	1158-A01-6307-00	E027-DMF-VD-ME-DWG-010
Steel Structure Drawing	1158-A01-1100-00	E027-DMF-VD-ST-DWG-013
Surface Preparation and Painting Procedure	1158-A01-QS01-00	E027-DMF-VD-QC-PRO-024

REFERENCE DSH.		
TITLE	VENDOR DOCUMENT NO.	CLIENT DOCUMENT NO.
Axial Fan Data Sheet	1158-A01-6510-00	E027-DMF-VD-ME-DSH-016
Electrical Motor Data Sheet	1158-A01-6610-00	E027-DMF-VD-EL-DSH-017
Belt & Pulley Data Sheet	1158-A01-6710-00	E027-DMF-VD-ME-DSH-018
Vibration Switch Data Sheet	1158-A01-6800-00	E027-DMF-VD-IN-DSH-019



PART NO.	DESCRIPTION	DIMENTION	MATERIAL	QTY.	UNIT WEIGHT (Kg)	TOTAL WEIGHT (Kg)	REV.
6000-00 Fan Drive Assembly Drawing							
EACH FAN DRIVE WITH AV OR AP FAN FOR ONE SET INCLUDES :							
6103.00	TIE BEAM	REF. SHEET 2	ST-37(Galv)	2	2.5	5	
6104.00	LUBRICATION PIPING SUPPORT	REF. SHEET 2	ST-37(Galv)	1	1	1	
6108.00	MOTOR SUPPORTING STRUCTURE	REF. SHEET 2	ST-37(Galv)	1	61	61	
6210.00	DRIVEN PULLEY GUARD	REF. SHEET 2	ST-37(Galv)	1	10	10	
6211.00	DRIVER PULLEY GUARD	REF. SHEET 2	ST-37(Galv)	1	8	8	
6212.00	FAN GUARD, 7(FI)				20		
6212.00(1)	TRANANGULAR MESH			1	5	5	
6212.00(2)	TRANANGULAR MESH			1	5	5	
6212.00(3)	TRANANGULAR MESH			1	5	5	
6212.00(4)	TRANANGULAR MESH	REF. SHEET 2	ST-37(Galv)	1	5	5	
6213.00	DRIVE SUPPORTING STRUCTURE GUARD, 7(FI)	REF. SHEET 2	ST-37(Galv)	1	3	3	
6214.00	FAN GUARD SUPPORT	REF. SHEET 2	ST-37(Galv)	2	3	6	
6910.00	MOTOR PLATE	REF. SHEET 2	ST-37(Galv)	1	-	-	
6910.00	FAN UNIT DIA. (7 P) BLADE NO.-4	REF. DSH.	Manufacturer standard	1	-	-	
6910.00	MOTOR (7.5 KW -ELECTRIC-Exc.18-T3-IP55)	REF. DSH.	Manufacturer standard	1	-	-	
6711.00	DRIVER PULLEY PT40SPADPB106SPA2	REF. DSH.	GG20V ASTM A48-94a	1	-	-	
6712.00	DRIVEN PULLEY PT40SPADPB140CSPA2	REF. DSH.	GG20V ASTM A48-94a	1	-	-	
6713.00	BELT CAPXPA2332 CD-754.3	REF. DSH.	Manufacturer standard	2	-	-	
6716.00	SPACER BETWEEN MOTOR&PULLEY	REF. SHEET 2	ST-37(Galv)	1	0.3	0.3	
6771.00	SHAFT & BEARING BLOCK	REF. DSH.	Manufacturer standard	1	103	103	
6821.00	VIBRATION SWITCH(*****)	REF. DSH.	Manufacturer standard	1	-	-	
6822.00	VIBRATION SWITCH SUPPORT (*****)	REF. SHEET 2	ST-37(Galv)	1	2	2	
6840.00	TENSIONING BOLT	M16	C.S.SL 8.8(GALV)JA36	2	1	2	
6851.00	UNION FEMALE CONECTOR(1/8" NPT-6mm(TUBE))	REF. SHEET 2	S.S304L	2	0.1	0.2	
6852.00	TUBE (OD=8 mm, ID=6)	4000	S.S304L	1	-	-	
6855.00	UNION MALE CONECTOR(1/4" NPT-8mm(TUBE))	REF. DSH.	S.S304L	2	-	-	
6856.00	GREASE NIPPLE (1/8" NPT)	REF. DSH.	S.S304L	2	-	-	
6860.00	CLAMP	REF. SHEET 2	C.S(GALV)JA36	2	1	2	
6865.00	CLAMP	REF. SHEET 2	C.S(GALV)JA36	4	1	4	
BOLT & NUT & WASHER FOR ASSEMBLY PARTS AP FAN:							
6103.03	NUT FOR TIE BEAM	M16	DIN 934 -CL.8 (Dacromet)	4	16		
6103.04	WASHER	A17	DIN 125 A17 St (Dacromet)	4	16		
6108.05	BOLT FOR FAN GUARD SUPPORT	M16x40	DIN 933 CL.8.8 (Dacromet)	6	24		
6108.06	NUT	M16	DIN 934 -CL.8 (Dacromet)	12	48		
6108.07	WASHER	A17	DIN 125 A17 St (Dacromet)	6	24		
6840.02	NUT FOR TENSIONING BOLT	M16	DIN 934 -CL.8 (Dacromet)	4	16		
6840.03	WASHER	A17	DIN434-18-ST(8%) (Dacromet)	2	8		
6840.04	WASHER	A17	DIN 125 A17 St (Dacromet)	2	8		
6860.02	BOLT FOR CLAMP	M16x55	DIN 933 CL.8.8 (Dacromet)	6	24		
6860.03	NUT	M16	DIN 934 -CL.8 (Dacromet)	6	24		
6860.04	WASHER	A17	DIN 125 A17 St (Dacromet)	12	48		
6865.03	BOLT FOR CLAMP	M16x55	DIN 933 CL.8.8 (Dacromet)	8	32		
6865.03	NUT	M16	DIN 934 -CL.8 (Dacromet)	16	64		
6865.04	WASHER	A17	DIN 125 A17 St (Dacromet)	16	64		
BOLT & NUT & WASHER FOR ASSEMBLY PART (FAN DRIVE TO PROJECT LOCATION)							
BOLT & NUT & WASHER FOR ASSEMBLY PART AP OR AV FAN:							
6910.01	BOLT	M12x40	DIN 933 CL.8.8 (Dacromet)	36	144		
6910.02	NUT	M12	DIN 934 -CL.8 (Dacromet)	36	144		
6910.03	WASHER	A13	DIN 125 A17 St (Dacromet)	72	288		
6920.01	BOLT FOR MOTOR TO MOTOR PLATE	M16*70	DIN 933 CL.8.8 (Dacromet)	4	16		
6920.02	NUT	M16	DIN 934 -CL.8 (Dacromet)	4	16		
6920.03	WASHER	A17	DIN 125 A17 St (Dacromet)	4	16		
6930.01	BOLT FOR VIBRATION SWITCH SUPPORT	M8*30	DIN 933 CL.8.8 (Dacromet)	4	16		
6930.02	NUT	M8	DIN 934 -CL.8 (Dacromet)	4	16		
6930.03	WASHER	A9	DIN 125 A17 St (Dacromet)	8	32		
6940.01	BOLT FOR BEARING BLOCK TO SUPPORT MECHANISM	M16x65	DIN 933 CL.8.8 (Dacromet)	6	24		
6940.02	NUT	M16	DIN 934 -CL.8 (Dacromet)	6	24		
6940.03	WASHER	A17	DIN 125 A17 St (Dacromet)	6	24		
6940.04	WASHER	A17	DIN434-18-ST(8%) (Dacromet)	6	24		

RO	08/07/2024	ISSUED FOR APPROVAL	F.SZ	F.A	J.B.L	A.GHZ
REV	DATE	DESCRIPTION	DRAWN BY	CHECKED BY	APPROVED BY	FINAL APPROVED BY
CLIENT:			CONTRACTOR:			
PROJECT : AIR COOLER FOR Toase-che Park Sanati Gohar Ofogh Petrochemical Co. Fan Drive Assembly Drawing 1158-A01-6000-00 (SHEET 1 OF 2)						
DWG. NO.	E027-DMF-VD-ME-DWG-008		REV.	R0		
SCALE :	N.T.S.	SIZE :	A1	Factory : Km 14 special Karaj road		
THIS DOCUMENT OF A CONFIDENTIAL NATURE IS THE PROPERTY OF DAMAFIN AND SHALL NOT BE REPRODUCED IN ANY MANNER, NOR USED FOR ANY PURPOSE WHAT SO EVER, EXCEPT BY WRITTEN PERMISSION OF DAMAFIN.						



RO	08/07/2024	ISSUED FOR APPROVAL	F.SZ	F.A	J.B.L	A.GHZ
REV	DATE	DESCRIPTION	DRAWN BY	CHECKED BY	APPROVED BY	FINAL APPROVED BY
CLIENT:			CONTRACTOR:			
PROJECT : AIR COOLER FOR Toase-che Park Sanati Gohar Ofogh Petrochemical Co. Fan Drive Assembly Drawing 1158-A01-6000-00 (SHEET 2 OF 2)						
DWG. NO.		E1027-DMF-VD-ME-DWG-008				
SCALE :		N.T.S.		SIZE :		A1
REV :		R0				
THIS DOCUMENT OF A CONFIDENTIAL NATURE IS THE PROPERTY OF DAMAFIN AND SHALL NOT BE REPRODUCED IN ANY MANNER, NOR USED FOR ANY PURPOSE WHATSOEVER, EXCEPT BY WRITTEN PERMISSION OF DAMAFIN.						
Factory : Km 14 special Karaj road						