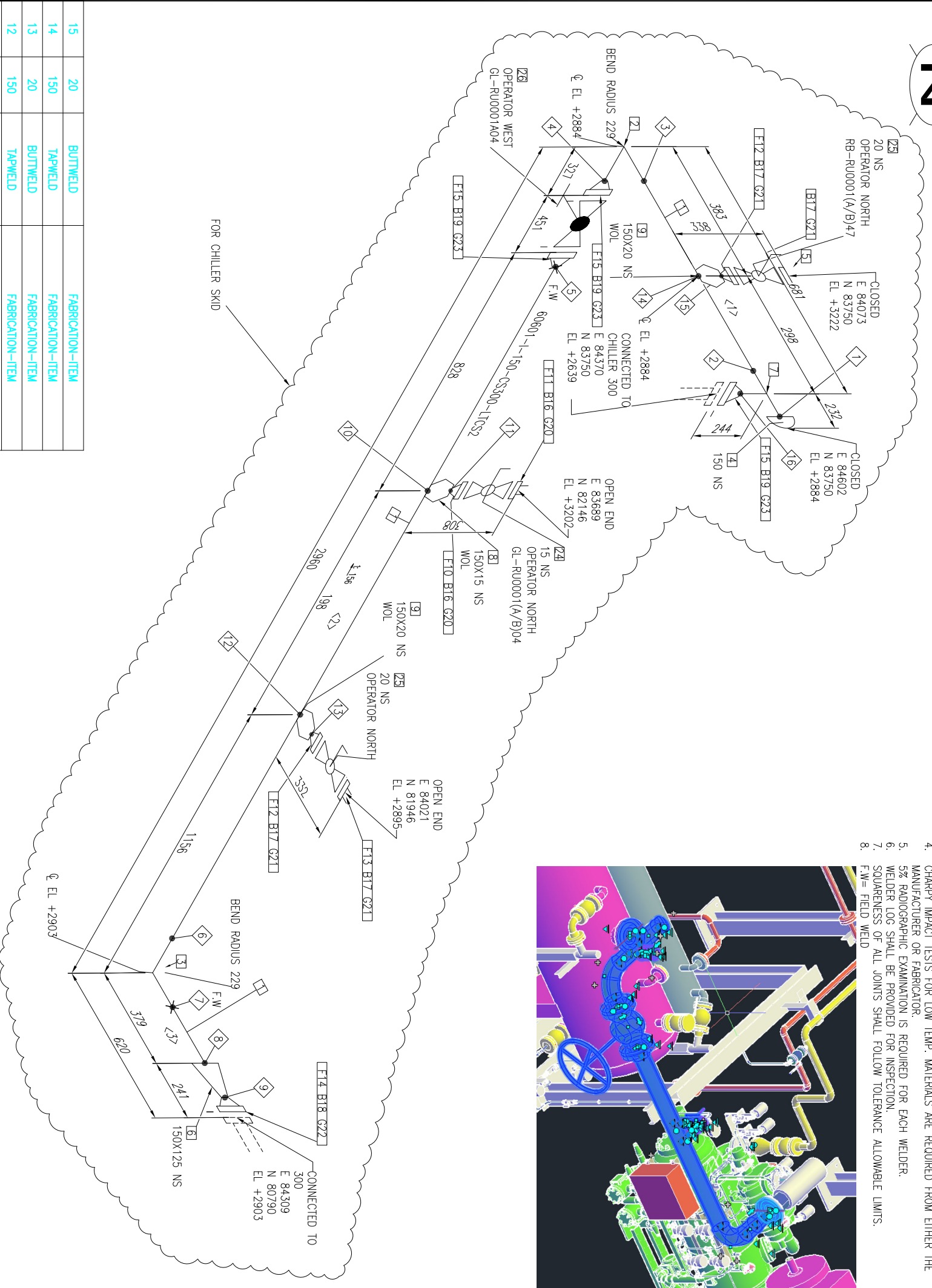
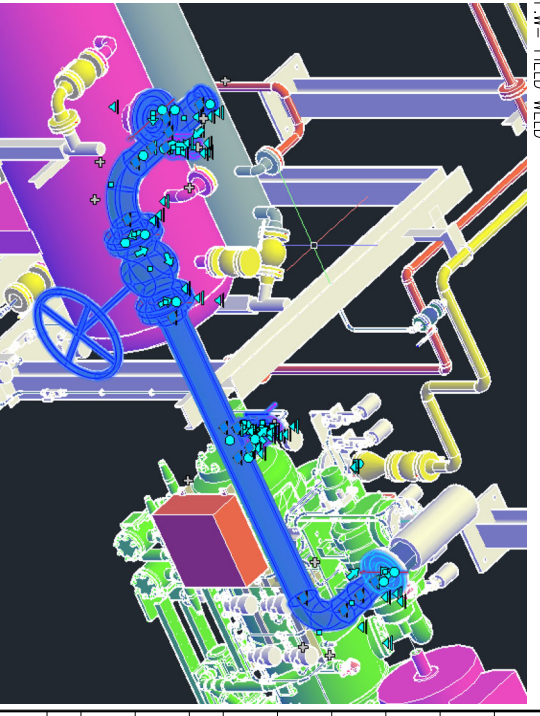




- NOTES:
1. TAPPED BRANCHES TO INCLUDE TWO (2) GUSSETS LOCATED 90 DEGREES APART.
 2. ALL SUPPORT WELDS SHALL BE CONTINUOUSLY WELDED.
 3. MATERIAL TEST REPORTS ARE REQUIRED.
 4. CHARPY IMPACT TESTS FOR LOW TEMP. MATERIALS ARE REQUIRED FROM EITHER THE MANUFACTURER OR FABRICATOR.
 5. 5% RADIOGRAPHIC EXAMINATION IS REQUIRED FOR EACH WELDER.
 6. WELDER LOG SHALL BE PROVIDED FOR INSPECTION.
 7. SQUARENESS OF ALL JOINTS SHALL FOLLOW TOLERANCE ALLOWABLE LIMITS.
 8. FW= FIELD WELD



ID	ND	TYPE	CATEGORY
1	150	BUTTWELD	FABRICATION-TIEM
2	150	BUTTWELD	FABRICATION-TIEM
3	150	BUTTWELD	FABRICATION-TIEM
4	150	BUTTWELD	FABRICATION-TIEM
5	150	BUTTWELD	FABRICATION-TIEM
6	150	BUTTWELD	FABRICATION-TIEM
7	150	BUTTWELD	FABRICATION-TIEM
8	150	BUTTWELD	FABRICATION-TIEM
9	125	TAPWELD	FABRICATION-TIEM
10	150	BUTTWELD	FABRICATION-TIEM
11	150	BUTTWELD	FABRICATION-TIEM
12	150	BUTTWELD	FABRICATION-TIEM
13	20	BUTTWELD	FABRICATION-TIEM
14	150	BUTTWELD	FABRICATION-TIEM
15	20	BUTTWELD	FABRICATION-TIEM

REV.	DESCRIPTION	DATE	DRAWN	CHKD	APPD	INSULATION THK
0		08/22/24				
1		10/24/24				

SERVICE	PIPE SPEC	MAX PRESSURE	MAX TEMPERATURE	P&ID DWG	INSULATION SPEC

9. BILL OF MATERIALS

ID	QTY	ND	SCH/CLASS	DESCRIPTION
1	2.4M	150	80	PIPE, SEAMLESS, SCH80, PE, ASME B36.10, ASTM A333 GR 6
2	1	150	80	ELBOW 90 LR, SCH 80, BW, ASME B16.9, ASTM A420 GR WP16
3	1	150	80	ELBOW 90 LR, SCH 80, BW, ASME B16.9, ASTM A420 GR WP16
4	1	150	80	CAP, SCH 80, BW, ASME B16.9, ASTM A420 GR WP16
5	1	20	300	FLANGE BLIND, 300 LB, RF, ASME B16.5, ASTM A350 GR LP2
6	1	150X125	80	REDUCER (CONC), SCH 80, BW, ASME B16.9, ASTM A420 GR WP16
7	1	150	80	TEE, SCH 80, BW, ASME B16.9, ASTM A420 GR WP16
8	1	150X15	80	WELDOLET, BW, 80, MSS-SP-97, ASTM A350 GR LP2
9	2	150X20	80	WELDOLET, BW, 80, MSS-SP-97, ASTM A350 GR LP2
10	1	15	80	FLANGES
11	1	15	300	FLANGE THD, 300 LB, RF, ASME B16.5, ASTM A350 GR LP2
12	2	20	80	FLANGE WN, SCH 80, 300 LB, RF, ASME B16.5, ASTM A350 GR LP2
13	1	20	300	FLANGE THD, 300 LB, RF, ASME B16.5, ASTM A350 GR LP2
14	1	125	80	FLANGE WN, SCH80, 300 LB, RF, ASME B16.5, ASTM A350 GR LP2
15	3	150	80	FLANGE WN, SCH 80, 300 LB, RF, ASME B16.5, ASTM A350 GR LP2
16	8	14X64	300	FASTENERS
17	16	16X77	300	BOLT SET, RF, 300 LB, STUD BOLT
18	8	20X121	300	BOLT SET, RF, 300 LB, STUD BOLT
19	36	20X121	300	BOLT SET, RF, 300 LB, STUD BOLT
20	2	15	300	GASKET, SWG, 1/8" THK, RF, 300 LB, ASME B16.20, CS/GRAPHITE
21	4	20	300	GASKET, SWG, 1/8" THK, RF, 300 LB, ASME B16.20, CS/GRAPHITE
22	1	125	300	GASKET, SWG, 1/8" THK, RF, 300 LB, ASME B16.20, CS/GRAPHITE
23	3	150	300	GASKET, SWG, 1/8" THK, RF, 300 LB, ASME B16.20, CS/GRAPHITE
24	1	15	300	VALVES
25	2	20	300	BALL VALVE, LONG PATTERN, 300 LB, RF, ASME B16.10, ASTM A350 GR LP2
26	1	150	300	GLOBE VALVE, 300 LB, RF, ASME B16.10

PROJECT NAME: MPE007			
TITLE:			
DRAWING NUMBER: 60601			
LINE NO:	60601	AREA:	UNIT:
JOB NUMBER:	N.T.S.	SCALE:	SHEET: 1 OF 1
			REV: 1