

GENERAL NOTES:
 - PO: ENP-CORTEM-2024-PO-200
 - ITEM NO : 2
 - QUANTITY : 2 NOS
 - J.B MATERIAL : 316L STAINLESS STEEL
 - EXTERNAL PAINTING : NA
 - INTERNAL PAINTING : NA
 - REMOVABLE GLAND PLATE WITH THICKNESS 3mm
 - TAG PLATE MATERIAL : STAINLESS STEEL
 (BLACK TEXT ON NATURAL BACKGROUND) FIXED BY SS316 RIVETS
 - ALL DIMENSIONS ARE IN MILLIMETERS [mm]

| TAG NAME | Q.TY | TEXT | DIMENSIONS [mm] |
|----------|------|------------------|-----------------|
| TAG | 1 | JBD-A-RU0001A-01 | 80x30 |
| TAG | 1 | JBD-A-RU0001B-01 | 80x30 |

CERTIFICATE NAME PLATE
MATERIAL : SS316 FIXED BY SS316 RIVETS

CORTEM SpA
 VIA AQUILEIA, 10 34070
 VILLESSE - GO ITALY
 2024 CTB453820S1

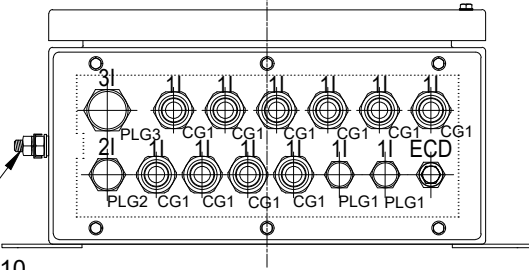
Enclosures with terminals: s.n.24/..
 Use cables suitable for temperature of: 90 °C

CEI 03 ATEX 333 IECEx CES 13.0001
 II 2GD Ex eb ia IIC T 5 Gb Ex eb ia IIC T 5 Gb

Ex tb ia IIC T 75 °C Db IP66 Ex tb ia IIC T 75 °C Db IP66

45 n° terminals max wire section [mm²] A 8 max current
 U-386/11W Made in ITALY WARNING - DO NOT OPEN when energized

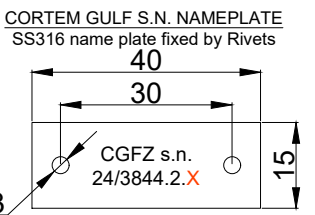
BOTTOM SIDE
 REMOVABLE GLAND PLATE 3MM THICKNESS
 3I: N.1 Ø 32.5mm NOT THREADED HOLE
 2I: N.1 Ø 25.5mm NOT THREADED HOLE
 1I: N.12 Ø 20.5mm NOT THREADED HOLE
 ECD - N.1 Ø 20.5mm NOT THREADED HOLE



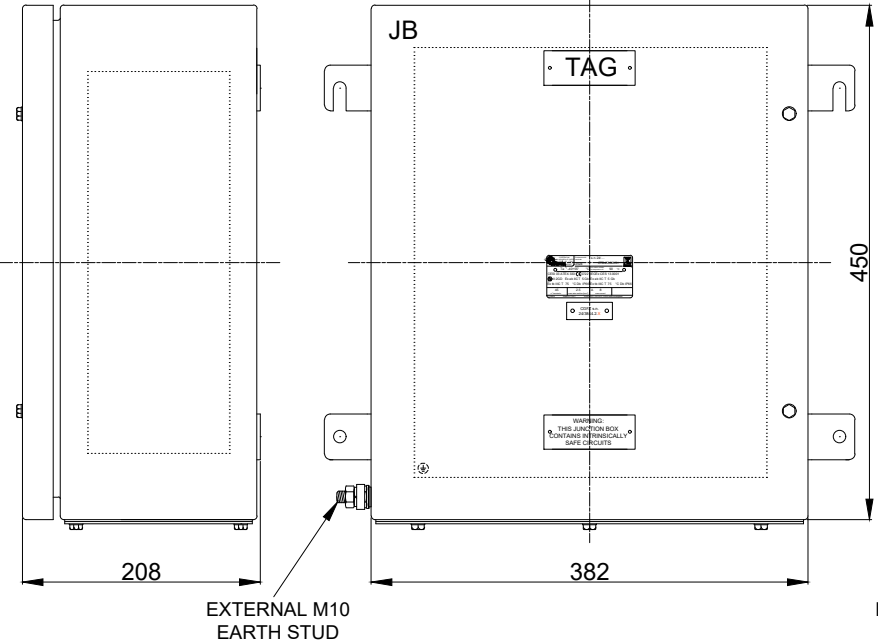
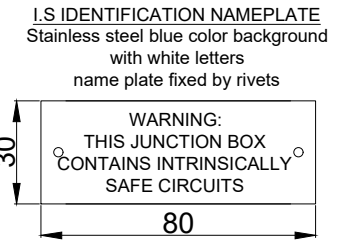
EXTERNAL M10
 EARTH STUD

RIGHT SIDE

EXTERNAL VIEW

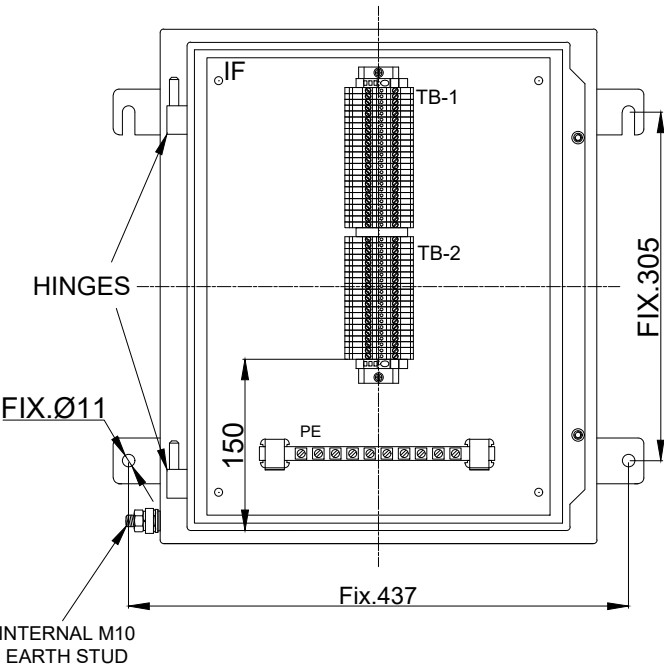


X TO BE FROM 1 TO 2

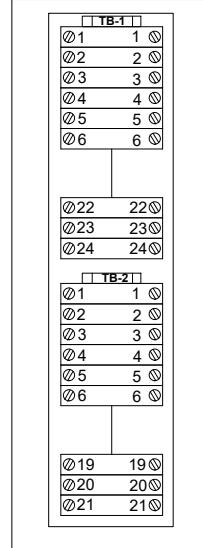


| N° | Q.TY | CODE | DESCRIPTION | MAKE |
|------|----------|--------------------|--|------------|
| JB | 1 | CTB453820S1 | STAINLESS STEEL AISI 316L JUNCTION BOX | CORTEM |
| IF | 1 | B45-443 | SS316L INTERNAL MOUNTING FRAME | CORTEM |
| TB-1 | 24 | WDU2.5BL | Feed-through Terminal 2.5 Sqmm Blue Colour | WEIDMULLER |
| | 1+2 | DIN RAIL | DIN Rail + terminal stopper | |
| TB-2 | 21 | WDU2.5BL | Feed-through Terminal 2.5 Sqmm Blue Colour | |
| CG1 | 10+10+10 | NEV20IB+DL1IB+PGA1 | Nickle Plated Brass Cable Gland ISO M20 Suitable for armoured cable + Locknut + Shroud | CORTEM |
| PLG1 | 2+2 | PLG1IB+DL1IB | Nickel Plated Brass Plug ISO M20 + Locknut | CORTEM |
| PLG2 | 1+1 | PLG2IB+DL2IB | Nickel Plated Brass Plug ISO M25 + Locknut | CORTEM |
| PLG3 | 1+1 | PLG3IB+DL3IB | Nickel Plated Brass Plug ISO M32 + Locknut | CORTEM |
| PE | 1 | NSCHECU | Copper earth bar (10 Derivations) | CORTEM |
| ECD | 1 | ECDE-D1S | Stainless Steel Breather/Drain plug ISO M20 | CORTEM |

INTERNAL VIEW



TB DETAIL



| REV. | DATE | PREP'D | CHK'D | APP'D | DESCRIPTION |
|------|------------|--------|-------|-------|------------------------|
| 1 | 10/12/2024 | S.M | S.T | S.T | RE ISSUED FOR APPROVAL |
| 0 | 22/11/2024 | S.M | S.T | S.T | ISSUED FOR APPROVAL |

| | | |
|--------------------|---|--|
| DRAWING TITLE | ENER PROCESS FZ-LLC | |
| | GENERAL ARRANGEMENT DRAWING CORTEM GULF FZCO | |
| CORTEM GULF JOB N° | CGFZ-3844 | CORTEM GULF (FZCO) RA08AB06 JAFZA P.O.BOX 17123, DUBAI, UAE TEL: 00971 4 8062000 |

DRAWING NUMBER: CGFZ-3844-2

Member of CORTEM GROUP

| | | | |
|-------|---|------|---|
| SHEET | 1 | NEXT | / |
| TOT. | 1 | | |