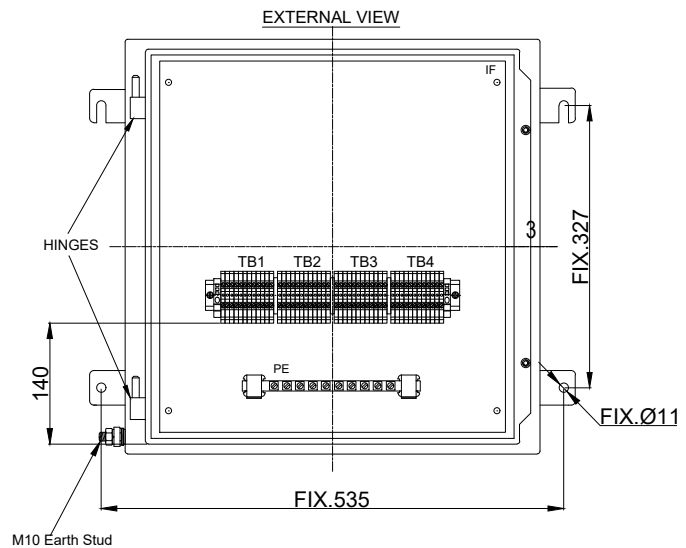
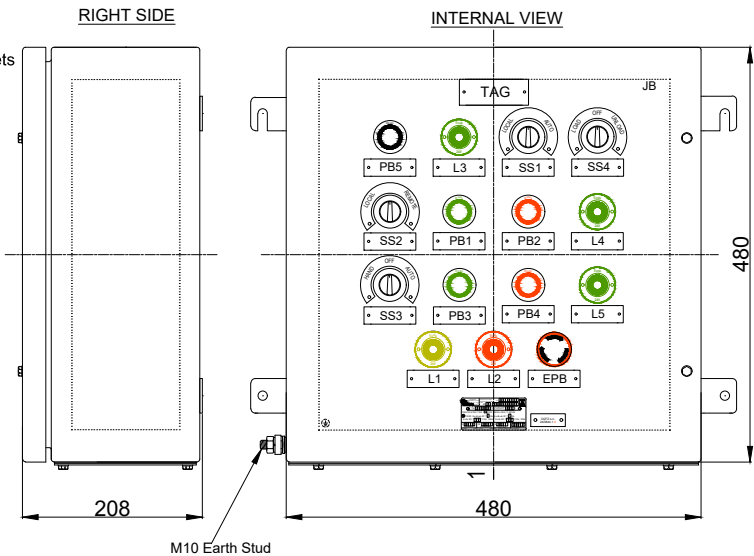
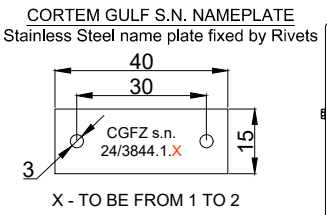
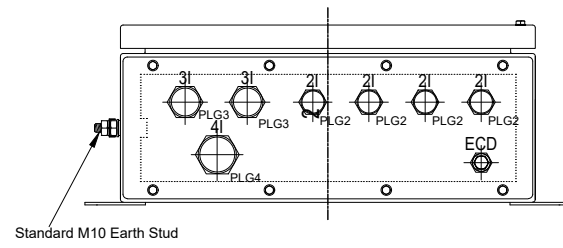
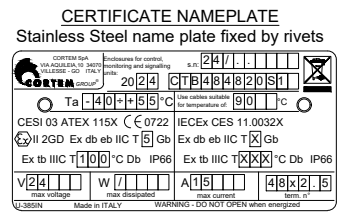


**GENERAL NOTES:**  
 - PO: ENP-CORTEM-2024-PO-200  
 - ITEM NO : 1  
 - QUANTITY : 2 NOS  
 - J.B MATERIAL : 316L STAINLESS STEEL  
 - EXTERNAL PAINTING : NA  
 - INTERNAL PAINTING : NA  
 - REMOVABLE GLAND PLATE WITH THICKNESS 3mm  
 - TAG PLATE MATERIAL : STAINLESS STEEL  
 (BLACK TEXT ON NATURAL BACKGROUND) FIXED BY SS316 RIVETS  
 - ALL DIMENSIONS ARE IN MILLIMETERS [mm]

**BOTTOM SIDE**  
 REMOVABLE GLAND PLATE 3MM THICKNESS  
 4I: N.1 Ø 40.5mm NOT THREADED HOLE  
 3I: N.2 Ø 32.5mm NOT THREADED HOLE  
 2I: N.4 Ø 25.5mm NOT THREADED HOLE  
 ECD - N.1 Ø 20.5mm NOT THREADED HOLE



N°	Q.TY	CODE	DESCRIPTION	MAKE
JB	1	CTB484820S1	STAINLESS STEEL AISI 316L JUNCTION BOX	CORTEM
IF	1	B48-443	SS316L INTERNAL MOUNTING FRAME	CORTEM
PB1,PB3	2+2	M-0603/V+M-0606/20	Green Push Button with 2NO Contact	CORTEM
PB2,PB4	2+2	M-0603/R+M-0606/02	Red Push Button with 2NC Contact	CORTEM
PB5	1+1	M-0603/N+M-0606/20	Black Push Button with 2NO Contact	CORTEM
EPB	1+2	M-0605+M-0606/04	Emergency stop Push Button complete with 4NC contact	CORTEM
SS1	1	M-0604/1Z	2 Position selector switch (LOCAL-AUTO) with external handle	CORTEM
SS2	1	M-0604/1Z	2 Position selector switch (LOCAL-REMOTE) with external handle	CORTEM
SS3	1	M-0604/2C	3 Position selector switch (HAND-OFF-AUTO) with external handle	CORTEM
SS4	1	M-0604/2C	3 Position selector switch (HAND-OFF-UNLOAD) with external handle	CORTEM
L1	1	M-0612/3G24	Signalling Led Lamp as Yellow Colour in 24V DC	CORTEM
L2	1	M-0612/3R24	Signalling Led Lamp as Red Colour in 24V DC	CORTEM
L3,L4,L5	1+1+1	M-0612/3V24	Signalling Led Lamp as Green Colour in 24V DC	CORTEM
TB-1,TB-2, TB-3,TB-4	48	WDU.5	Feed-through terminal, Screw connection, 2.5Sqmm terminal block with Dark Beige Color	WEIDMULLER
ECD	1	ECDE-D1S	Stainless Steel Breather/Drain plug ISO M20	CORTEM
PLG4	1+1	PLG4IB+DL4IB	Ni-Plated Brass Plug with Locknut for ISO M40	CORTEM
PLG3	2+2	PLG3IB+DL3IB	Ni-Plated Brass Plug with Locknut for ISO M32	CORTEM
PLG2	4+4	PLG2IB+DL2IB	Ni-Plated Brass Plug with Locknut for ISO M25	CORTEM
PE	1	NSCHECU	Copper earth bar (10 Derivations)	CORTEM

REV.	DATE	PREP'D	CHK'D	APP'D	DESCRIPTION
2	13/12/2024	S.M	S.T	S.T	RE ISSUED FOR APPROVAL
1	10/12/2024	S.M	S.T	S.T	RE ISSUED FOR APPROVAL
0	22/11/2024	S.M	S.T	S.T	ISSUED FOR APPROVAL

DRAWING TITLE	ENER PROCESS FZ-LLC		DRAWING NUMBER	CGFZ-3844-1	SHEET 1	NEXT 2
	GENERAL ARRANGEMENT DRAWING CORTEM GULF FZCO					
CORTEM GULF JOB N°	CGFZ-3844					



TAG DETAILS

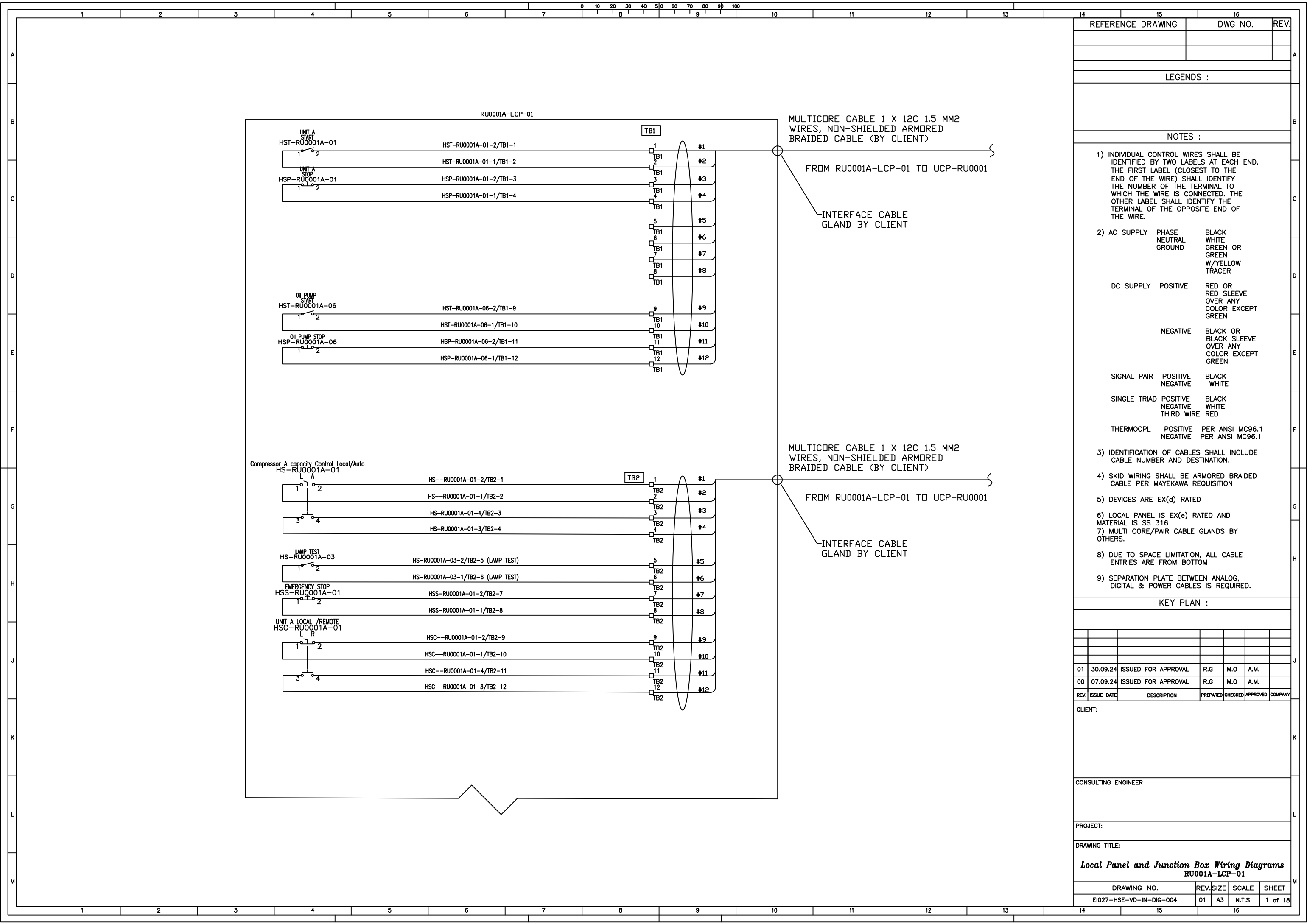
TAG NAME	Q.TY	TEXT	DIMENSIONS[mm]
TAG	1	RU0001A-LCP-01	80x30
PB1	1	HST-RU0001A-01 UNIT START	60x20
PB2	1	HSP-RU0001A-01 UNIT STOP	60x20
PB3	1	HST-RU0001A-06 OIL PUMP START	60x20
PB4	1	HSP-RU0001A-06 OIL PUMP STOP	60x20
PB5	1	HS-RU0001A-03 LAMP TEST	60x20
EPB	1	HSS-RU0001A-01 EMERGENCY STOP	60x20
SS1	1	HS-RU0001A-01 CAPACITY CONTROL LOCAL/AUTO	60x20
SS2	1	HSC-RU0001A-01 LOCAL/REMOTE	60x20
SS3	1	HSC-RU0001A-06 OIL PUMP HAND/OFF/AUTO	60x20
SS4	1	HS-RU0001A-02 CAPACITY CONTROL LOAD/OFF/UNLOAD	60x20
L1	1	XA-RU0001A-01 UNIT COMMON ALARM	60x20
L2	1	XA-RU0001A-02 UNIT COMMON TRIP	60x20
L3	1	XL-RU0001A-05 UNITY READY TO START	60x20
L4	1	XL-RU0001A-06 COMPRESSOR RUNNING	60x20
L5	1	HLR-RU0001A-06 OIL PUMP RUNNING	60x20

TAG NAME	Q.TY	TEXT	DIMENSIONS[mm]
TAG	1	RU0001B-LCP-01	80x30
PB1	1	HST-RU0001B-01 UNIT START	60x20
PB2	1	HSP-RU0001B-01 UNIT STOP	60x20
PB3	1	HST-RU0001B-06 OIL PUMP START	60x20
PB4	1	HSP-RU0001B-06 OIL PUMP STOP	60x20
PB5	1	HS-RU0001B-03 LAMP TEST	60x20
EPB	1	HSS-RU0001B-01 EMERGENCY STOP	60x20
SS1	1	HS-RU0001B-01 CAPACITY CONTROL LOCAL/AUTO	60x20
SS2	1	HSC-RU0001B-01 LOCAL/REMOTE	60x20
SS3	1	HSC-RU0001B-06 OIL PUMP HAND/OFF/AUTO	60x20
SS4	1	HS-RU0001B-02 CAPACITY CONTROL LOAD/OFF/UNLOAD	60x20
L1	1	XA-RU0001B-01 UNIT COMMON ALARM	60x20
L2	1	XA-RU0001B-02 UNIT COMMON TRIP	60x20
L3	1	XL-RU0001B-05 UNITY READY TO START	60x20
L4	1	XL-RU0001B-06 COMPRESSOR RUNNING	60x20
L5	1	HLR-RU0001B-06 OIL PUMP RUNNING	60x20

REV.	DATE	PREP'D	CHK'D	APP'D	DESCRIPTION
2	13/12/2024	S.M	S.T	S.T	RE ISSUED FOR APPROVAL
1	10/12/2024	S.M	S.T	S.T	RE ISSUED FOR APPROVAL
0	22/11/2024	S.M	S.T	S.T	ISSUED FOR APPROVAL

DRAWING TITLE	ENER PROCESS FZ-LLC	
	GENERAL ARRANGEMENT DRAWING	
	CORTEM GULF FZCO	
CORTEM GULF JOB N°	CGFZ-3844	CORTEM GULF (FZCO) RA08AB06 JAFZA P.O.BOX 17123, DUBAI, UAE TEL: 00971 4 8062000

			
DRAWING NUMBER	CGFZ-3844-1		SHEET 2 /
			TOT. 2



REFERENCE DRAWING	DWG NO.	REV.
LEGENDS :		
NOTES :		

- 1) INDIVIDUAL CONTROL WIRES SHALL BE IDENTIFIED BY TWO LABELS AT EACH END. THE FIRST LABEL (CLOSEST TO THE END OF THE WIRE) SHALL IDENTIFY THE NUMBER OF THE TERMINAL TO WHICH THE WIRE IS CONNECTED. THE OTHER LABEL SHALL IDENTIFY THE TERMINAL OF THE OPPOSITE END OF THE WIRE.
- 2) AC SUPPLY PHASE NEUTRAL GROUND  
 DC SUPPLY POSITIVE  
 DC SUPPLY NEGATIVE  
 SIGNAL PAIR POSITIVE NEGATIVE  
 SINGLE TRIAD POSITIVE NEGATIVE THIRD WIRE  
 THERMOPL POSITIVE NEGATIVE  
 BLACK WHITE GREEN OR GREEN W/YELLOW TRACER  
 RED OR RED SLEEVE OVER ANY COLOR EXCEPT GREEN  
 BLACK OR BLACK SLEEVE OVER ANY COLOR EXCEPT GREEN  
 BLACK WHITE  
 BLACK WHITE RED  
 PER ANSI MC96.1  
 PER ANSI MC96.1
- 3) IDENTIFICATION OF CABLES SHALL INCLUDE CABLE NUMBER AND DESTINATION.
- 4) SKID WIRING SHALL BE ARMORED BRAIDED CABLE PER MAYEKAWA REQUISITION
- 5) DEVICES ARE EX(d) RATED
- 6) LOCAL PANEL IS EX(e) RATED AND MATERIAL IS SS 316
- 7) MULTI CORE/PAIR CABLE GLANDS BY OTHERS.
- 8) DUE TO SPACE LIMITATION, ALL CABLE ENTRIES ARE FROM BOTTOM
- 9) SEPARATION PLATE BETWEEN ANALOG, DIGITAL & POWER CABLES IS REQUIRED.

KEY PLAN :

01	30.09.24	ISSUED FOR APPROVAL	R.G	M.O	A.M.
00	07.09.24	ISSUED FOR APPROVAL	R.G	M.O	A.M.
REV.	ISSUE DATE	DESCRIPTION	PREPARED	CHECKED	APPROVED

CLIENT:

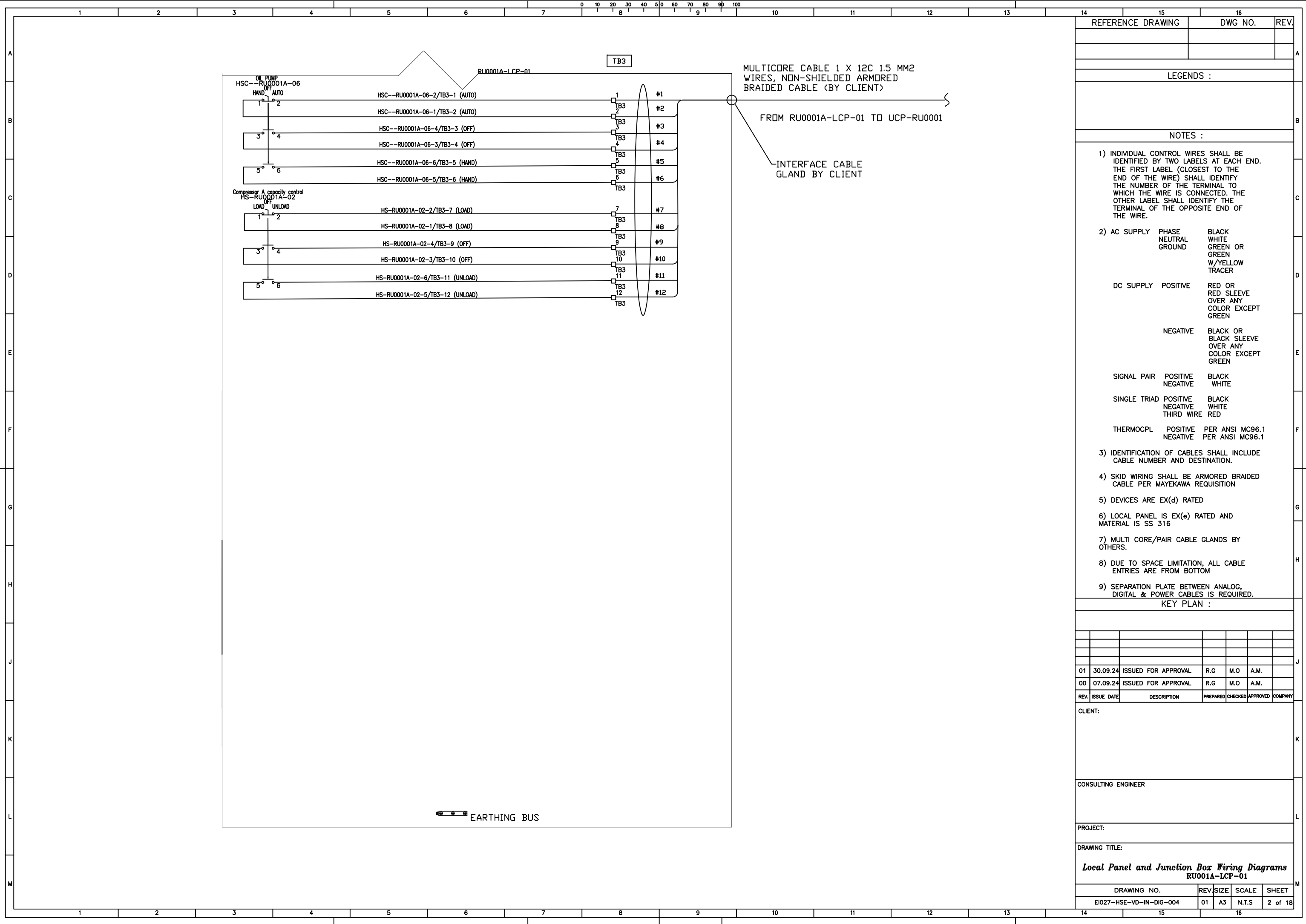
CONSULTING ENGINEER

PROJECT:

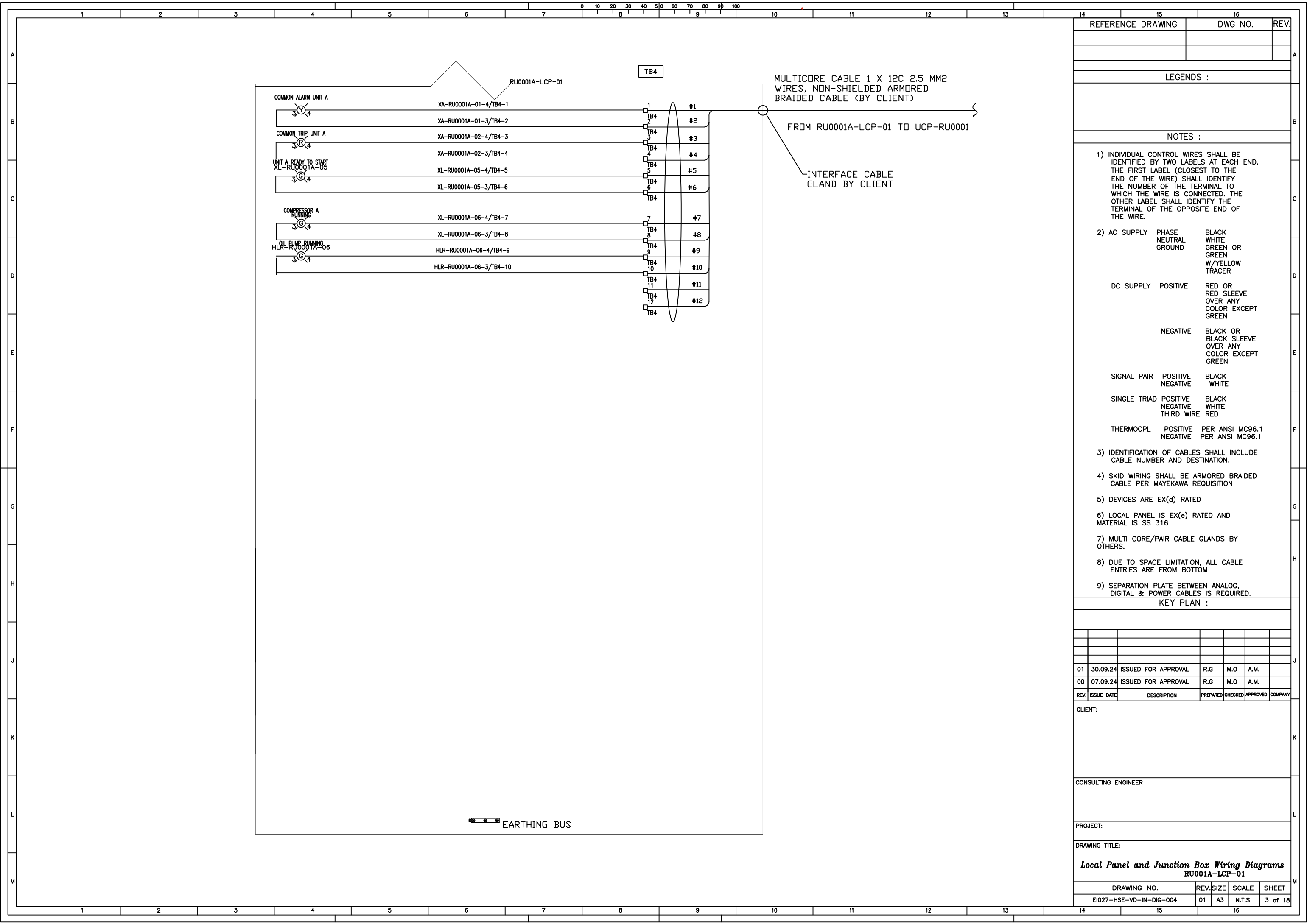
DRAWING TITLE:

**Local Panel and Junction Box Wiring Diagrams**  
**RU001A-LCP-01**

DRAWING NO.	REV.	SIZE	SCALE	SHEET
E1027-HSE-VD-IN-DIG-004	01	A3	N.T.S	1 of 18



REFERENCE DRAWING		DWG NO.		REV.		
LEGENDS :						
NOTES :						
1) INDIVIDUAL CONTROL WIRES SHALL BE IDENTIFIED BY TWO LABELS AT EACH END. THE FIRST LABEL (CLOSEST TO THE END OF THE WIRE) SHALL IDENTIFY THE NUMBER OF THE TERMINAL TO WHICH THE WIRE IS CONNECTED. THE OTHER LABEL SHALL IDENTIFY THE TERMINAL OF THE OPPOSITE END OF THE WIRE.						
2) AC SUPPLY	PHASE	BLACK				
	NEUTRAL	WHITE				
	GROUND	GREEN OR GREEN OR W/YELLOW TRACER				
DC SUPPLY	POSITIVE	RED OR RED SLEEVE OVER ANY COLOR EXCEPT GREEN				
	NEGATIVE	BLACK OR BLACK SLEEVE OVER ANY COLOR EXCEPT GREEN				
SIGNAL PAIR	POSITIVE	BLACK				
	NEGATIVE	WHITE				
SINGLE TRIAD	POSITIVE	BLACK				
	NEGATIVE	WHITE				
	THIRD WIRE	RED				
THERMOCP	POSITIVE	PER ANSI MC96.1				
	NEGATIVE	PER ANSI MC96.1				
3) IDENTIFICATION OF CABLES SHALL INCLUDE CABLE NUMBER AND DESTINATION.						
4) SKID WIRING SHALL BE ARMORED BRAIDED CABLE PER MAYEKAWA REQUISITION						
5) DEVICES ARE EX(d) RATED						
6) LOCAL PANEL IS EX(e) RATED AND MATERIAL IS SS 316						
7) MULTI CORE/PAIR CABLE GLANDS BY OTHERS.						
8) DUE TO SPACE LIMITATION, ALL CABLE ENTRIES ARE FROM BOTTOM						
9) SEPARATION PLATE BETWEEN ANALOG, DIGITAL & POWER CABLES IS REQUIRED.						
KEY PLAN :						
01	30.09.24	ISSUED FOR APPROVAL	R.G	M.O	A.M.	
00	07.09.24	ISSUED FOR APPROVAL	R.G	M.O	A.M.	
REV.	ISSUE DATE	DESCRIPTION	PREPARED	CHECKED	APPROVED	COMPANY
CLIENT:						
CONSULTING ENGINEER						
PROJECT:						
DRAWING TITLE:						
<b>Local Panel and Junction Box Wiring Diagrams</b>						
<b>RU001A-LCP-01</b>						
DRAWING NO.		REV.	SIZE	SCALE	SHEET	
E1027-HSE-VD-IN-DIG-004		01	A3	N.T.S	2 of 18	



15	16	REV.
REFERENCE DRAWING	DWG NO.	

LEGENDS :

NOTES :

- 1) INDIVIDUAL CONTROL WIRES SHALL BE IDENTIFIED BY TWO LABELS AT EACH END. THE FIRST LABEL (CLOSEST TO THE END OF THE WIRE) SHALL IDENTIFY THE NUMBER OF THE TERMINAL TO WHICH THE WIRE IS CONNECTED. THE OTHER LABEL SHALL IDENTIFY THE TERMINAL OF THE OPPOSITE END OF THE WIRE.
- 2) AC SUPPLY
 

PHASE	BLACK
NEUTRAL	WHITE
GROUND	GREEN OR GREEN W/YELLOW TRACER

DC SUPPLY POSITIVE	RED OR RED SLEEVE OVER ANY COLOR EXCEPT GREEN
NEGATIVE	BLACK OR BLACK SLEEVE OVER ANY COLOR EXCEPT GREEN

SIGNAL PAIR POSITIVE	BLACK
NEGATIVE	WHITE

SINGLE TRIAD POSITIVE	BLACK
NEGATIVE	WHITE
THIRD WIRE	RED

THERMOCPPL POSITIVE	PER ANSI MC96.1
NEGATIVE	PER ANSI MC96.1
- 3) IDENTIFICATION OF CABLES SHALL INCLUDE CABLE NUMBER AND DESTINATION.
- 4) SKID WIRING SHALL BE ARMORED BRAIDED CABLE PER MAYEKAWA REQUISITION
- 5) DEVICES ARE EX(d) RATED
- 6) LOCAL PANEL IS EX(e) RATED AND MATERIAL IS SS 316
- 7) MULTI CORE/PAIR CABLE GLANDS BY OTHERS.
- 8) DUE TO SPACE LIMITATION, ALL CABLE ENTRIES ARE FROM BOTTOM
- 9) SEPARATION PLATE BETWEEN ANALOG, DIGITAL & POWER CABLES IS REQUIRED.

KEY PLAN :

01	30.09.24	ISSUED FOR APPROVAL	R.G	M.O	A.M.
00	07.09.24	ISSUED FOR APPROVAL	R.G	M.O	A.M.

CLIENT:

CONSULTING ENGINEER

PROJECT:

DRAWING TITLE:  
**Local Panel and Junction Box Wiring Diagrams  
RU001A-LCP-01**

DRAWING NO.	REV.	SIZE	SCALE	SHEET
EI027-HSE-VD-IN-DIG-004	01	A3	N.T.S	3 of 18