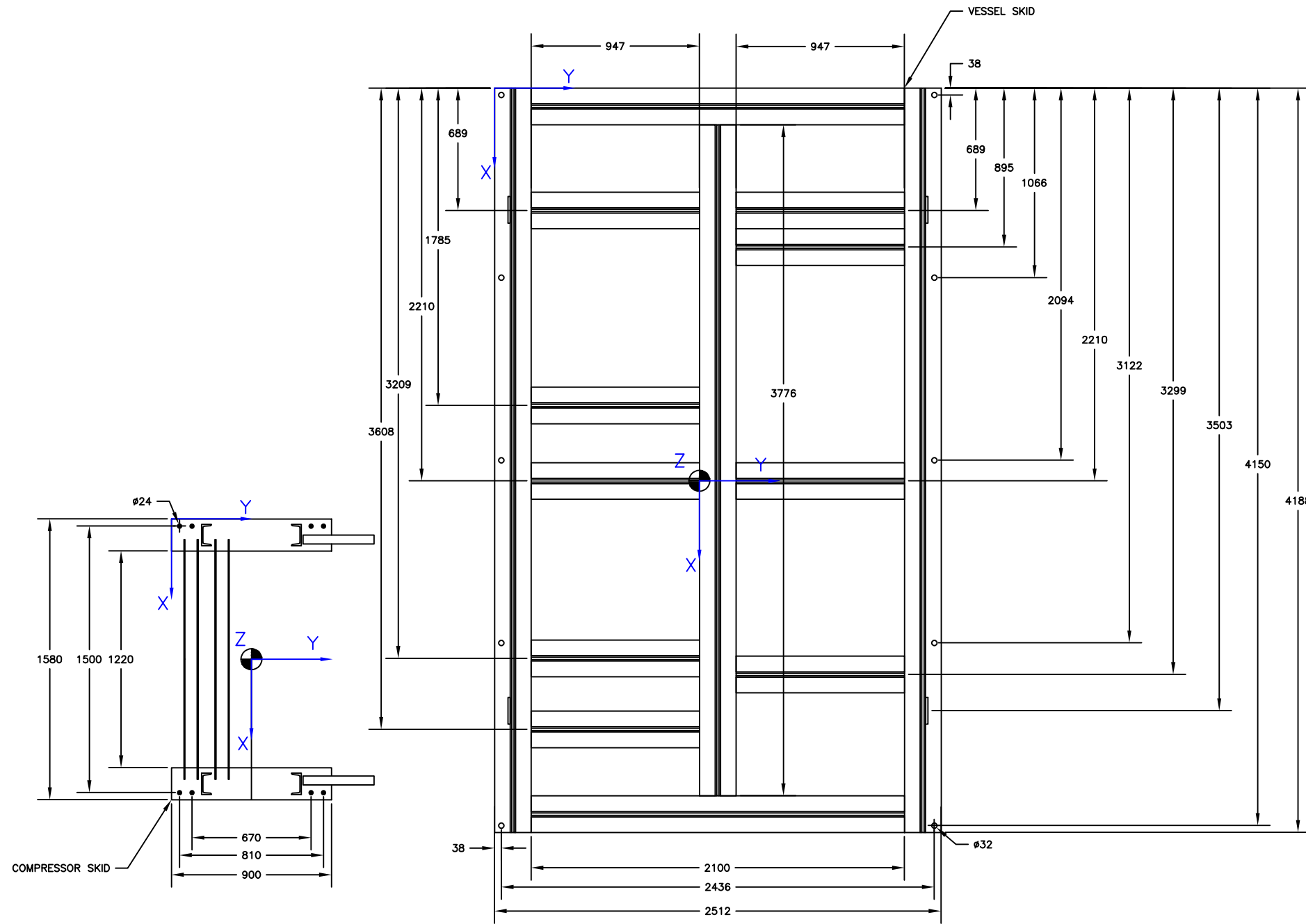


CENTER OF GRAVITY			
DESCRIPTION	X (MM)	Y (MM)	Z (MM)
CONDENSER	3131	1575	4000
VESSEL SKID	2217	1153	1045
COMPRESSOR SKID	790	450	860

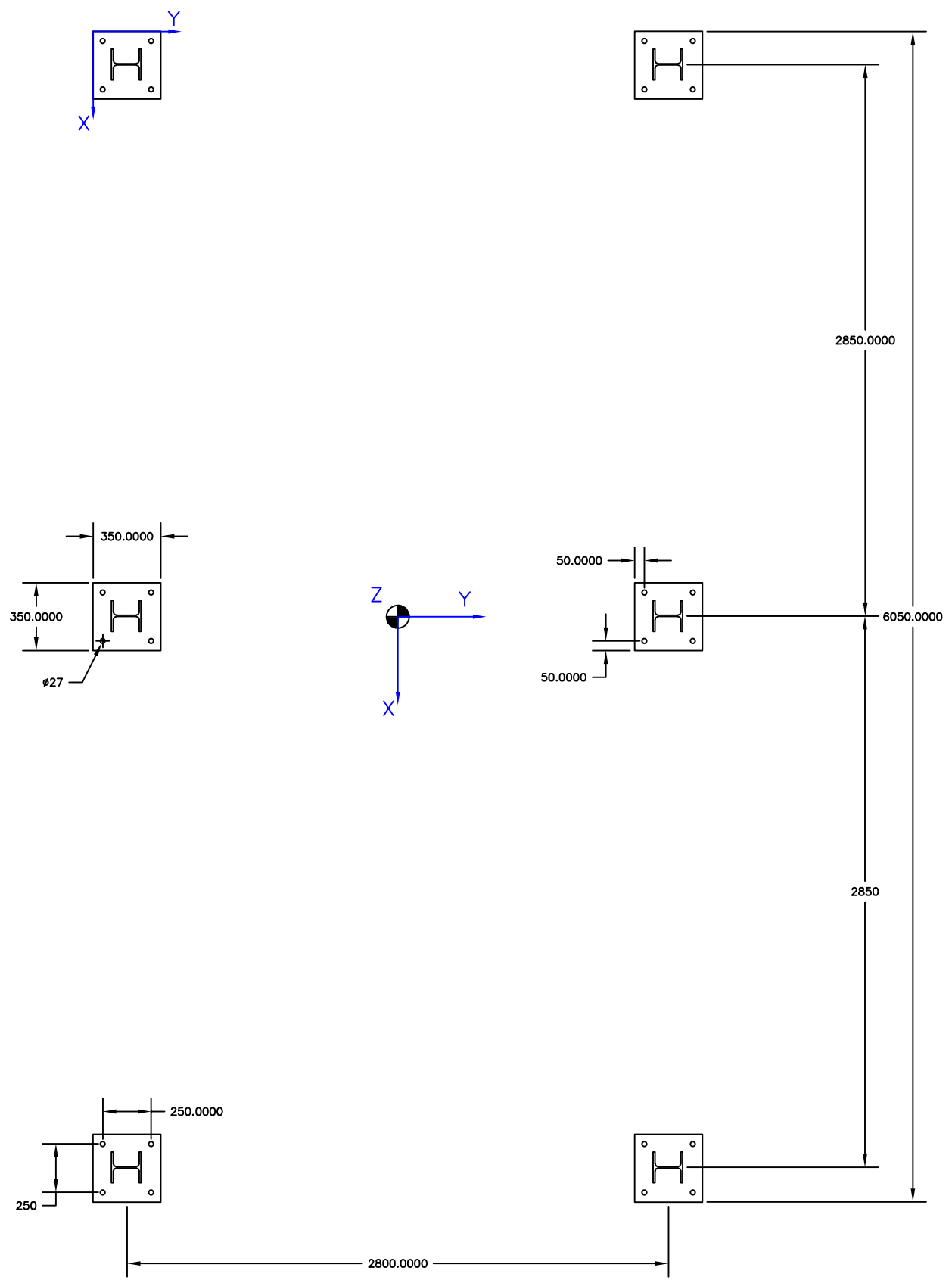
WEIGHT		
DESCRIPTION	DRY WEIGHT (KG)	WET WEIGHT (KG)
CONDENSER	5600	6200
VESSEL SKID	6000	7000
COMPRESSOR SKID	3500	4500

- NOTES:
- ALL DIMENSIONS ARE IN MM.
 - ANCHOR HOLES TOLERANCES: ± 0.13 in (± 3.2 mm).
 - BEAM LOCATION TOLERANCES: ± 0.13 in (± 3.2 mm).
 - SKID FLATNESS SHALL BE 0.0625" (1.6 mm).
 - SURFACE PREPARATION SHALL BE PER PROJECT PAINTING SPECIFICATION.
 - FOR CONDENSER DYNAMIC & STATIC LOADS, REFER TO CONDENSER DRAWINGS.
 - BEAM SIZE : W8 X 48#



TOP VIEW

0	F	26.07.24	FOR APPROVAL	AJD	AJD	IES	SES
REV.	STATUS	DATE	PURPOSE OF ISSUE	PREP.	CHKD.	APPD.	AUTH.
CLIENT: ENER TECHNOLOGI SERVICE: PROPANE REFRIGERATION PACKAGE LOCATION: IRAQ UNIT TAG NO.: RU-001 AB							
VENDOR LOGO							
Contract No.		P.O. No. ENER-MME-2024-100-001		SCALE			
DRAWING TITLE: FOUNDATION DRAWING							
DRAWING NO. MPE007-20021-1				REV.	SHEET No.	SIZE	
				0	1 OF 2	D	



CONDENSER TOP VIEW

0	F	26.07.24	FOR APPROVAL	AJD	AJD	IES	SES
REV.	STATUS	DATE	PURPOSE OF ISSUE	PREP.	CHKD.	APPD.	AUTH.
CLIENT: ENER TECHNOLOGI SERVICE: PROPANE REFRIGERATION PACKAGE LOCATION: IRAQ UNIT TAG NO.: RU-001 AB							
VENDOR LOGO							
Contract No.		P.O. No. ENER-MME-2024-100-001		SCALE			
DRAWING TITLE: FOUNDATION DRAWING							
DRAWING NO. MPE007-20021-2				REV.	SHEET No.	SIZE	
				0	2 OF 2	D	