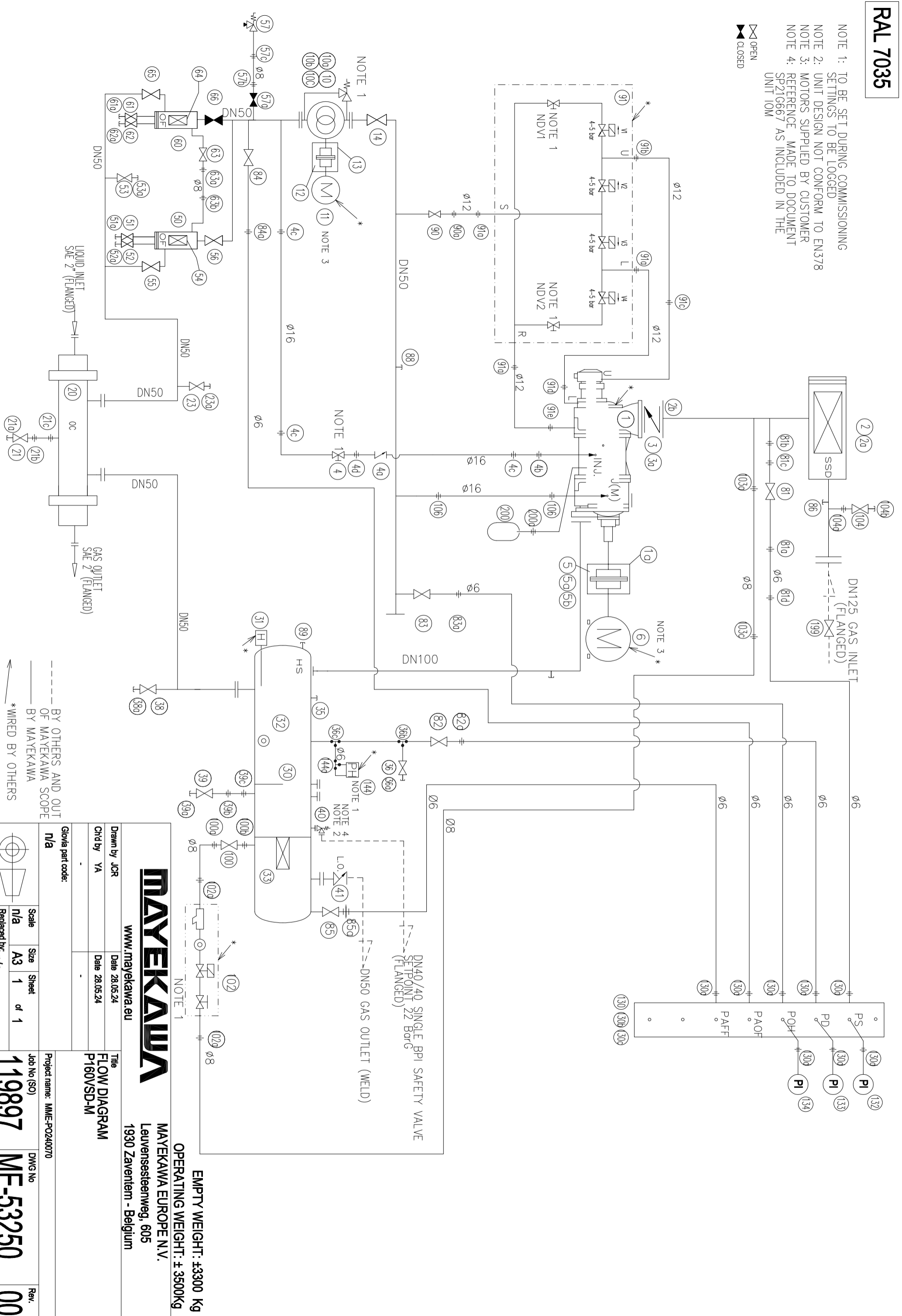


RAL 7035

- NOTE 1: TO BE SET DURING COMMISSIONING SETTINGS TO BE LOGGED
- NOTE 2: UNIT DESIGN NOT CONFORM TO EN378
- NOTE 3: MOTORS SUPPLIED BY CUSTOMER
- NOTE 4: REFERENCE MADE TO DOCUMENT SP216667 AS INCLUDED IN THE UNIT IOM

☒ OPEN
 ☒ CLOSED



EMPTY WEIGHT: ±3300 Kg
OPERATING WEIGHT: ± 3500Kg



MAYEKAWA EUROPE N.V.
 Leuvensesteenweg, 605
 1930 Zaventem - Belgium

www.mayekawa.eu

Drawn by JCR Date 28.05.24
 Chd by YA Date 28.05.24

Title
FLOW DIAGRAM
 P160V/SD-M

Glovia part code:
 n/a

Project name: MME-PO240070

Scale	n/a	Size	A3	Sheet	1	of	1
Job No (SO)	119897			DWG No	ME-53250		
Rev.	00						

--- BY OTHERS AND OUT OF MAYEKAWA SCOPE
 --- BY MAYEKAWA
 * WIRED BY OTHERS