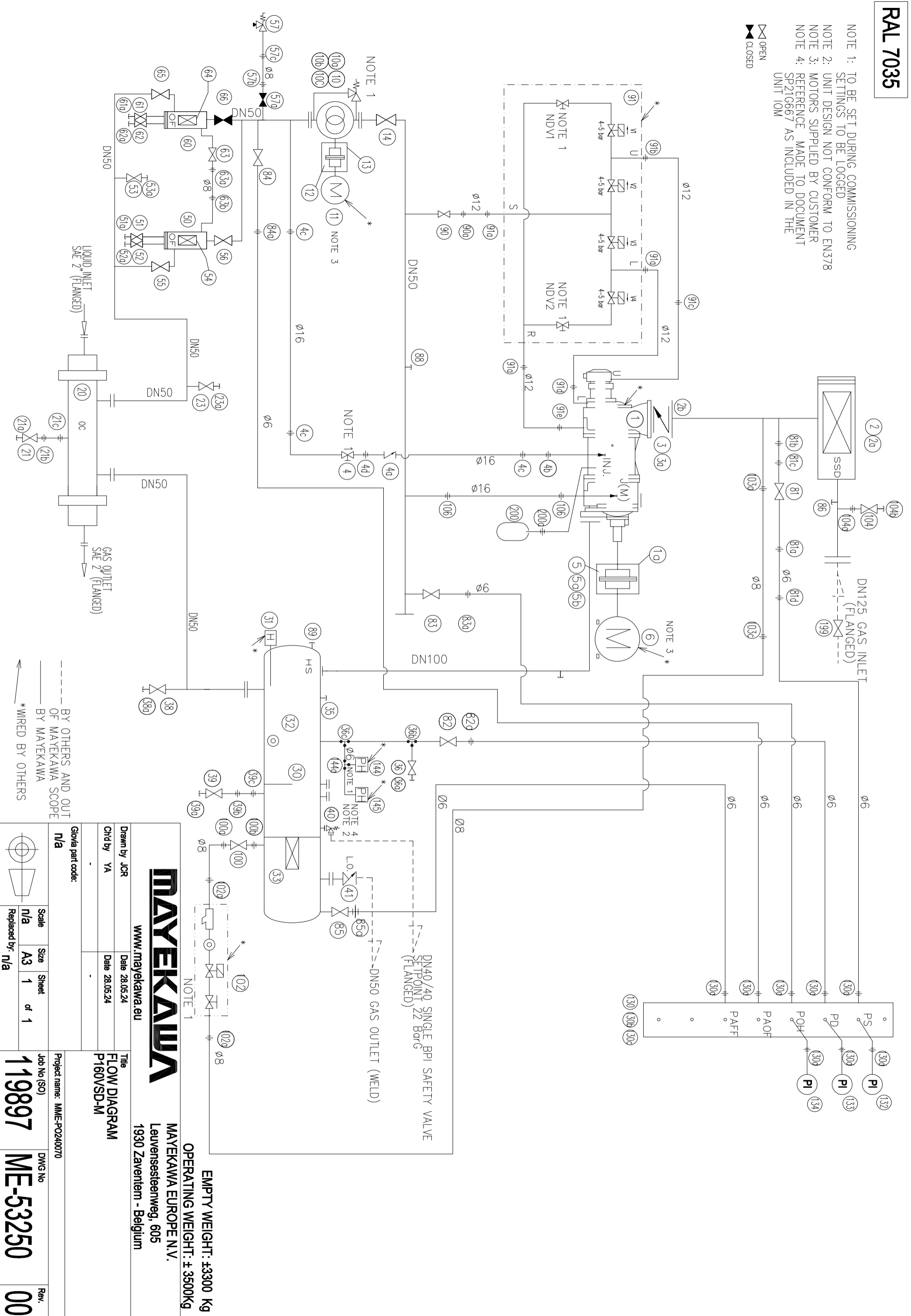


# RAL 7035

- NOTE 1: TO BE SET DURING COMMISSIONING SETTINGS TO BE LOGGED
- NOTE 2: UNIT DESIGN NOT CONFORM TO EN378
- NOTE 3: MOTORS SUPPLIED BY CUSTOMER
- NOTE 4: REFERENCE MADE TO DOCUMENT SP216667 AS INCLUDED IN THE UNIT IOM

 OPEN  
 CLOSED



www.mayekawa.eu

**EMPTY WEIGHT: ±3300 Kg**  
**OPERATING WEIGHT: ± 3500Kg**  
**MAYEKAWA EUROPE N.V.**  
 Leuvensesteenweg, 605  
 1930 Zaventem - Belgium

Drawn by JCR Date 28.05.24  
 Chd by YA Date 28.05.24  
 Title FLOW DIAGRAM  
 P160VSD-M

Glovia part code: n/a		Project name: MME-PO240070	
Scale	n/a	Size	A3
Sheet	1	of	1
Job No (SO)	119897	DWG No	ME-53250
Rev.	00		